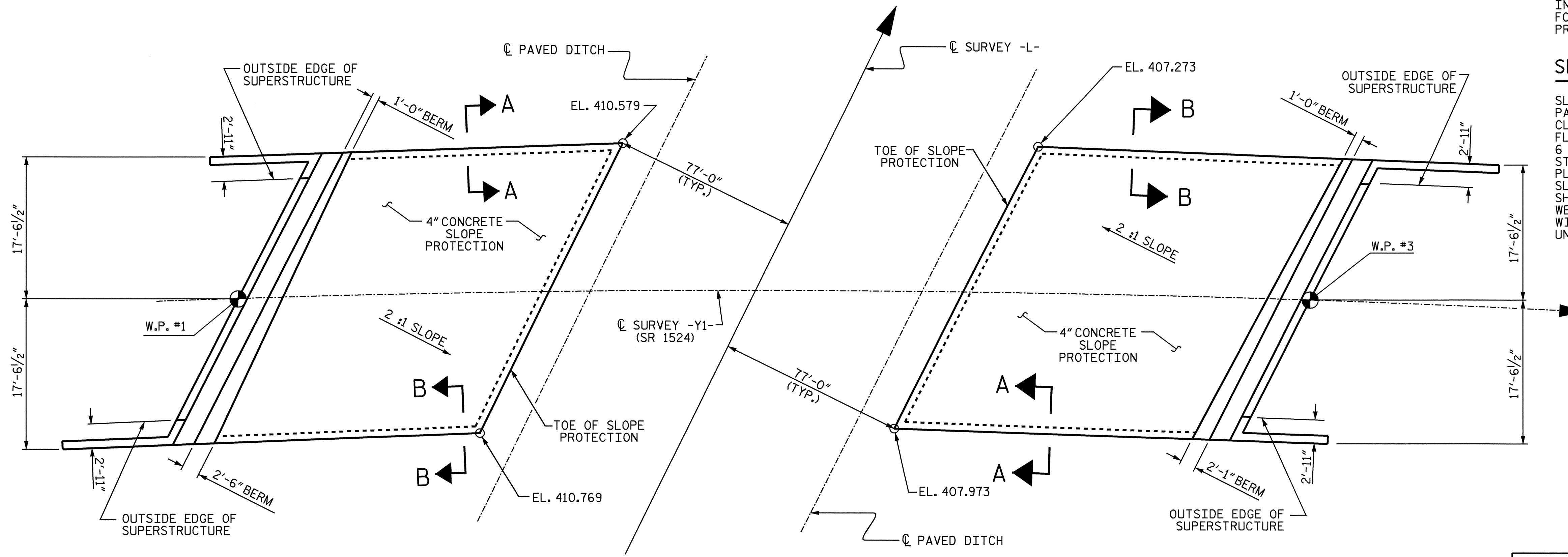


GENERAL NOTES

SLOPE PROTECTION SHALL BE PLACED UNDER THE ENDS OF THE BRIDGE AS SHOWN IN THE DETAILS. STRAIGHT EDGING WILL NOT BE REQUIRED UNLESS, IN THE OPINION OF THE ENGINEER, VISUAL INSPECTION INDICATES A NEED FOR IT. METHOD OF MEASUREMENT AND BASIS OF PAYMENT SHALL BE AS PRESCRIBED IN SECTION 462 OF THE STANDARD SPECIFICATIONS.

SLOPE PROTECTION

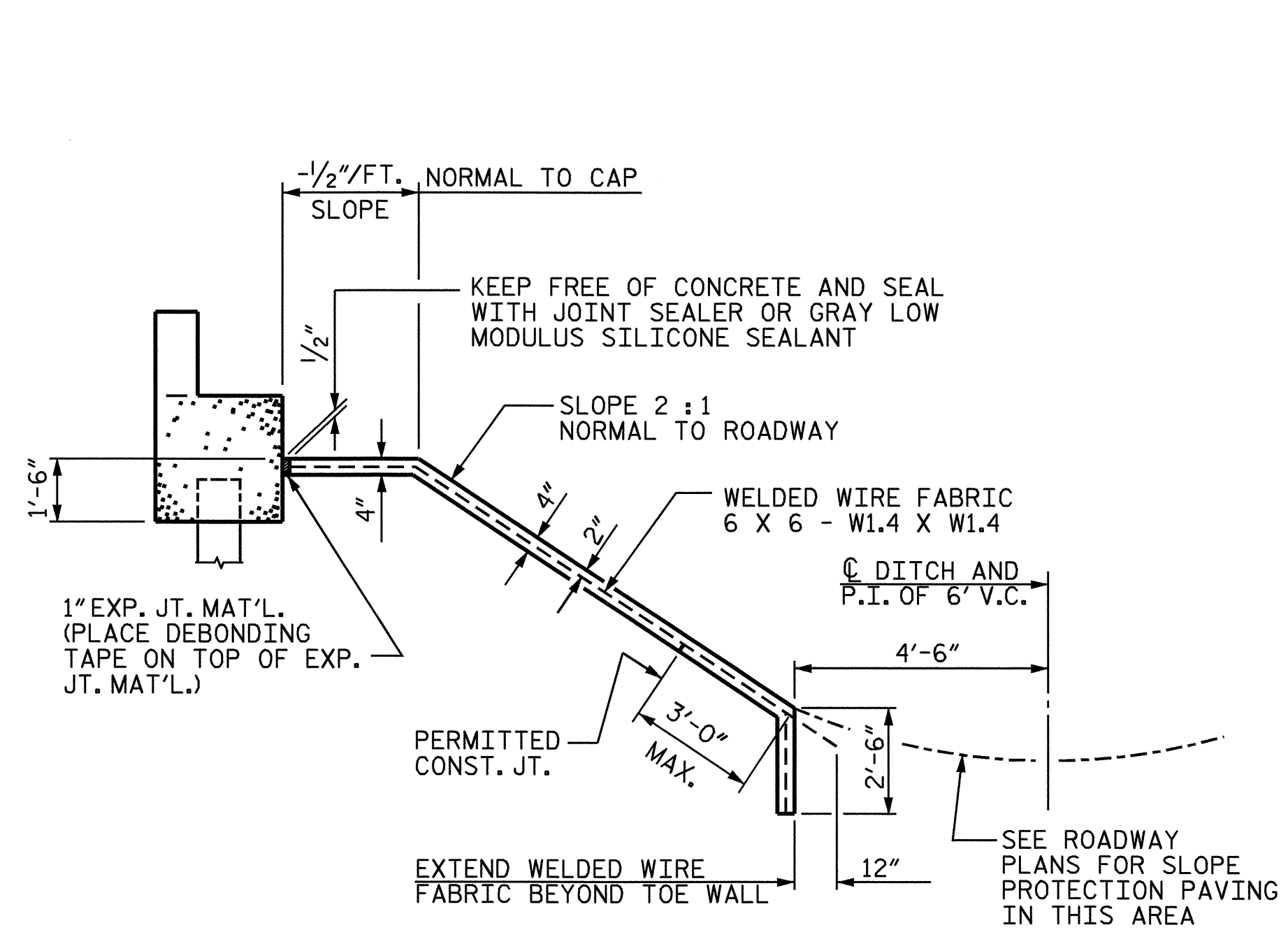
SLOPE PROTECTION SHALL CONSIST OF 4" POURED-IN-PLACE CONCRETE PAVING AS SHOWN IN THE DETAILS ON THIS SHEET. CONCRETE SHALL BE CLASS "B". THE CONCRETE SURFACE SHALL BE FLOATED WITH A WOODEN FLOAT AND FINISHED. WELDED WIRE FABRIC REINFORCING SHALL BE 6 X 6 - W1.4 X W1.4, 60" WIDE. SLOPE PROTECTION SHALL BE POURED IN 5' STRIPS AS SHOWN IN THE "POURING DETAIL" WITH 2'-0" LONG #4 BARS PLACED ALONG THE SLOPE BETWEEN STRIPS AT 1'-6" MAXIMUM SPACING. SLOPE PROTECTION MAY BE POURED IN ALTERNATE 4' AND 5' STRIPS AS SHOWN IN THE "OPTIONAL POURING DETAIL" WITH ADJACENT RUNS OF WELDED WIRE FABRIC LAPPING AT LEAST 6". THE COST OF THE WELDED WIRE FABRIC AND #4 BARS, IF USED, SHALL BE INCLUDED IN THE CONTRACT UNIT PRICE BID PER SQUARE YARD FOR SLOPE PROTECTION.



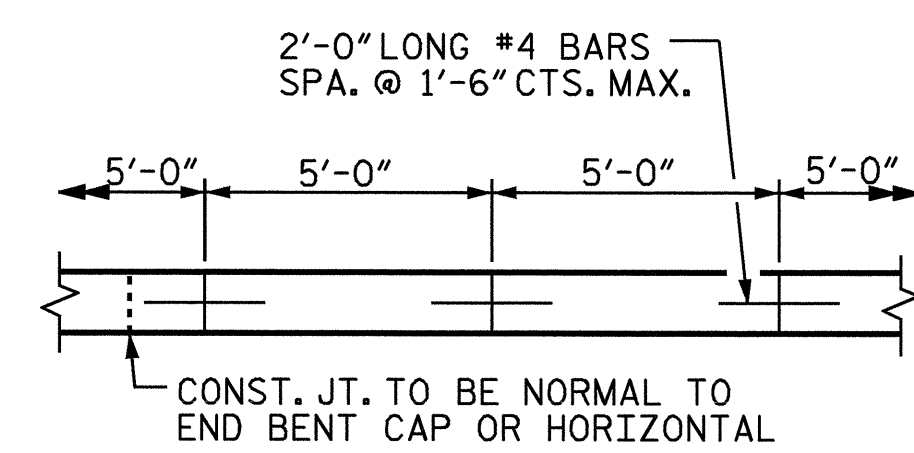
PLAN

BRIDGE @ STA. 519+42.20 -L-	4" CONCRETE SLOPE PROTECTION (SQ. YARDS)	WELDED WIRE FABRIC 60 INCHES WIDE * (APPROX. L.F.)
END BENT 1	163	293
END BENT 2	183	329

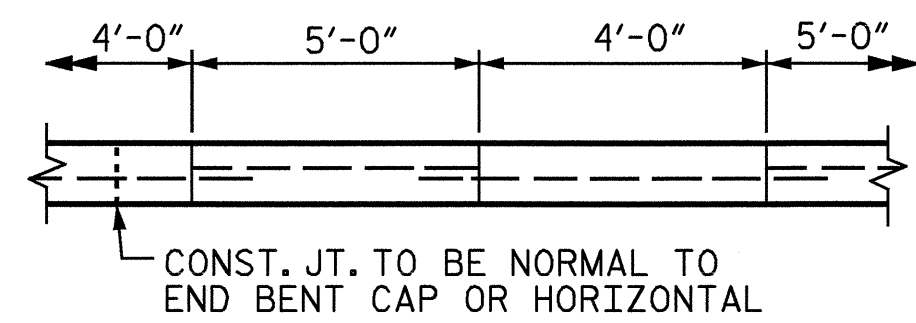
* QUANTITY SHOWN IS BASED ON 5' POURS.



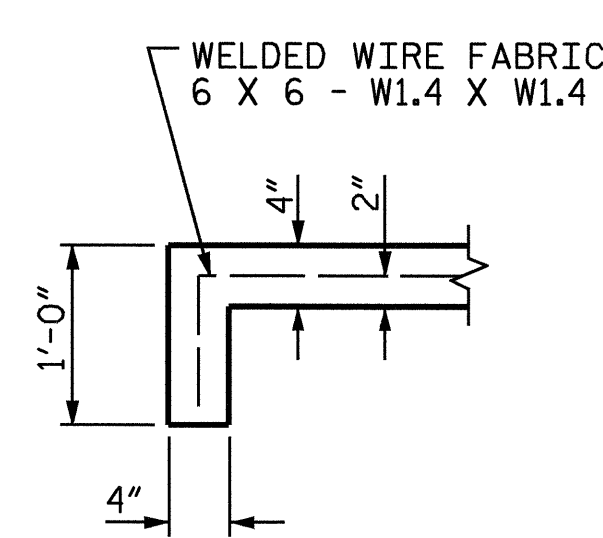
SECTION ALONG Q ROADWAY WHEN FILL CATCHES IN DITCH



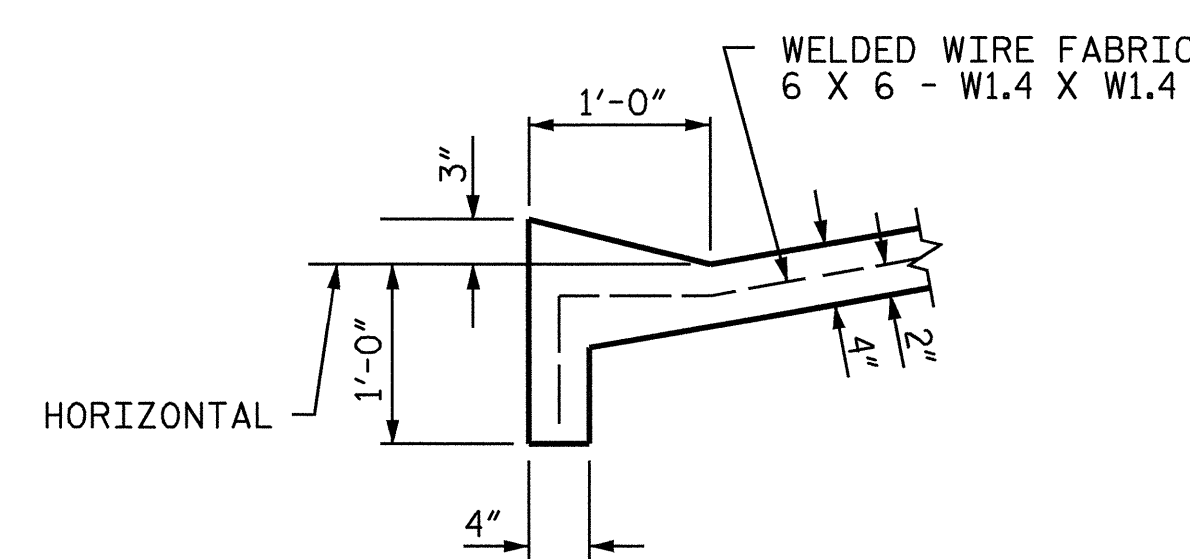
POURING DETAIL



OPTIONAL POURING DETAIL



SECTION A-A



SECTION B-B

DETAILS FOR SLOPE PROTECTION

DRAWN BY : A. V. ROYAL DATE : 12/03
 CHECKED BY : P. C. BREWER DATE : 12/03

27-AUG-2004 09:14
 w:\squadw\2417BB\aroyal\Microstation\R2417BB_sd.SP_01.dgn
 bng Brady



PROJECT NO. R-2417BB
LEE COUNTY
 STATION: 519+42.20 -L-

STATE OF NORTH CAROLINA DEPARTMENT OF TRANSPORTATION RALEIGH					
SLOPE PROTECTION DETAILS					
REVISIONS					SHEET NO.
NO.	BY:	DATE:	NO.	BY:	DATE:
1			3		
2			4		
					TOTAL SHEETS 78

STR. #1