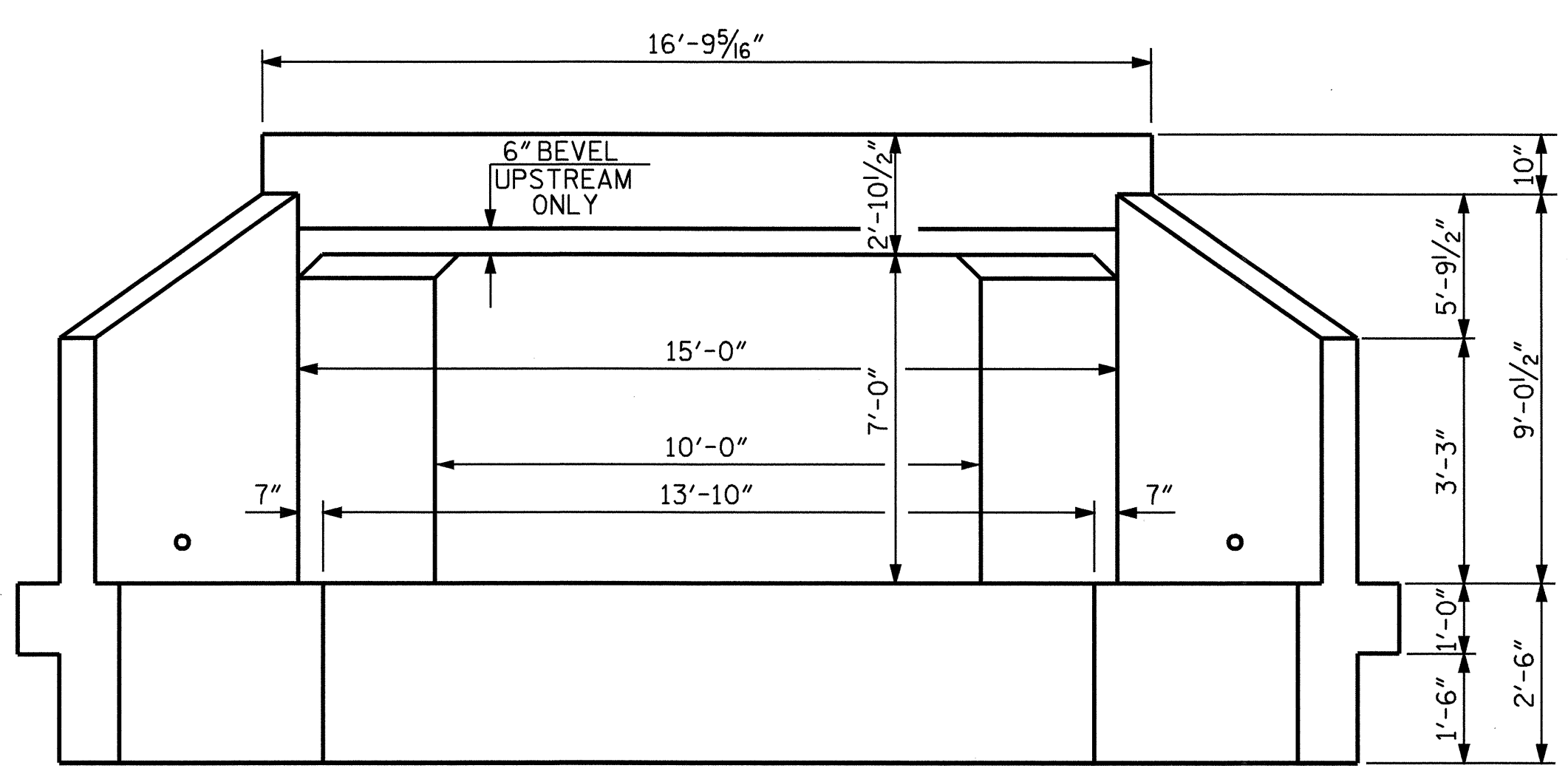


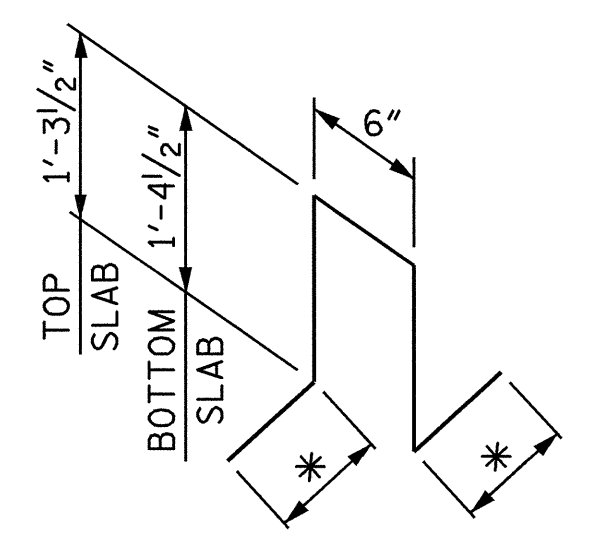
* THE 36" RCP THROUGH THE SIDEWALL OF THE CULVERT WILL BE LOCATED BY THE ENGINEER. REINFORCING STEEL SHALL BE FIELD BENT AS NECESSARY TO CLEAR PIPE.

* 36" RCP
TRANSVERSE CONST. JT. (SEE NOTES)

CULVERT SECTION NORMAL TO ROADWAY

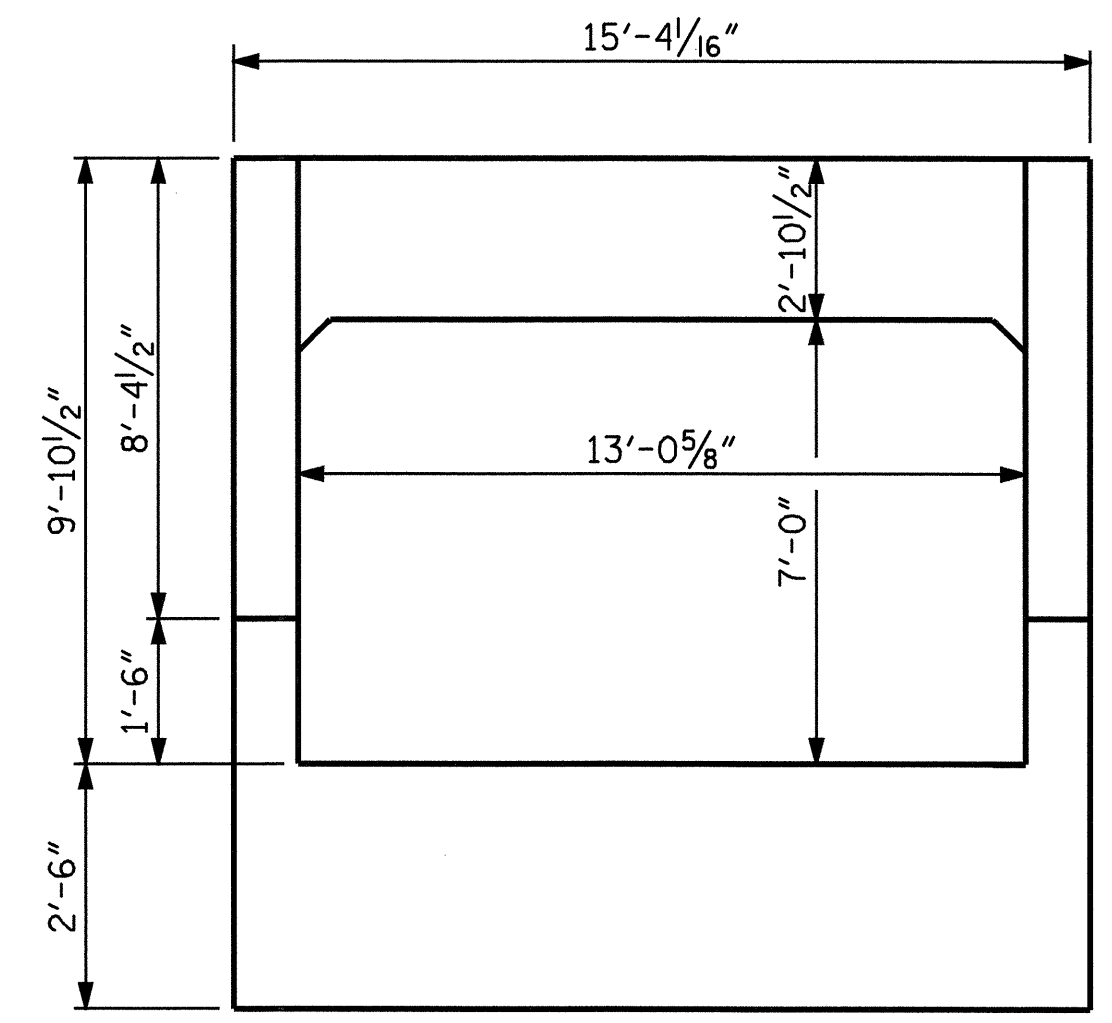


INLET END ELEVATION



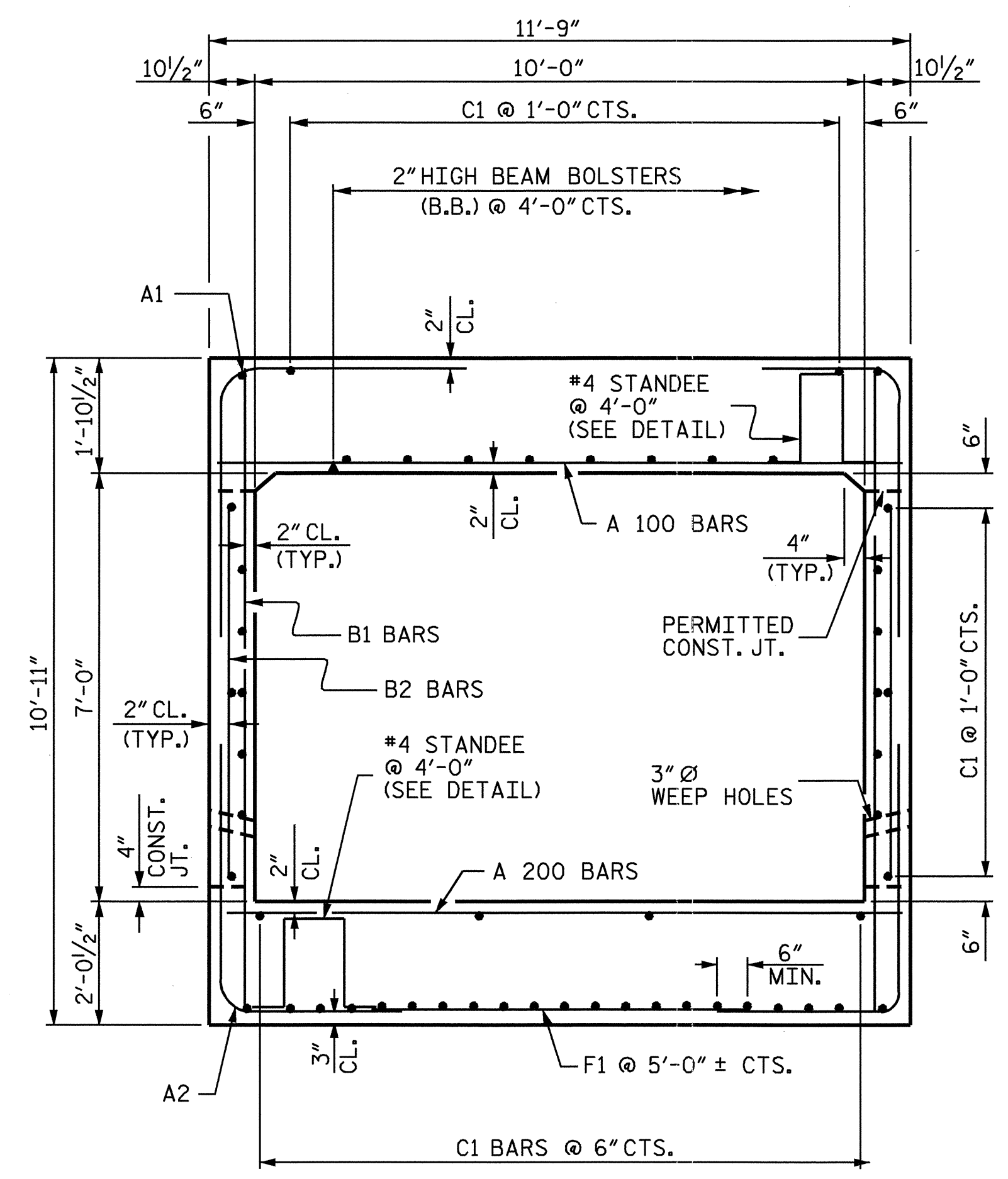
DETAIL OF #4 STANDEE

* TO BE DETERMINED BY FABRICATOR



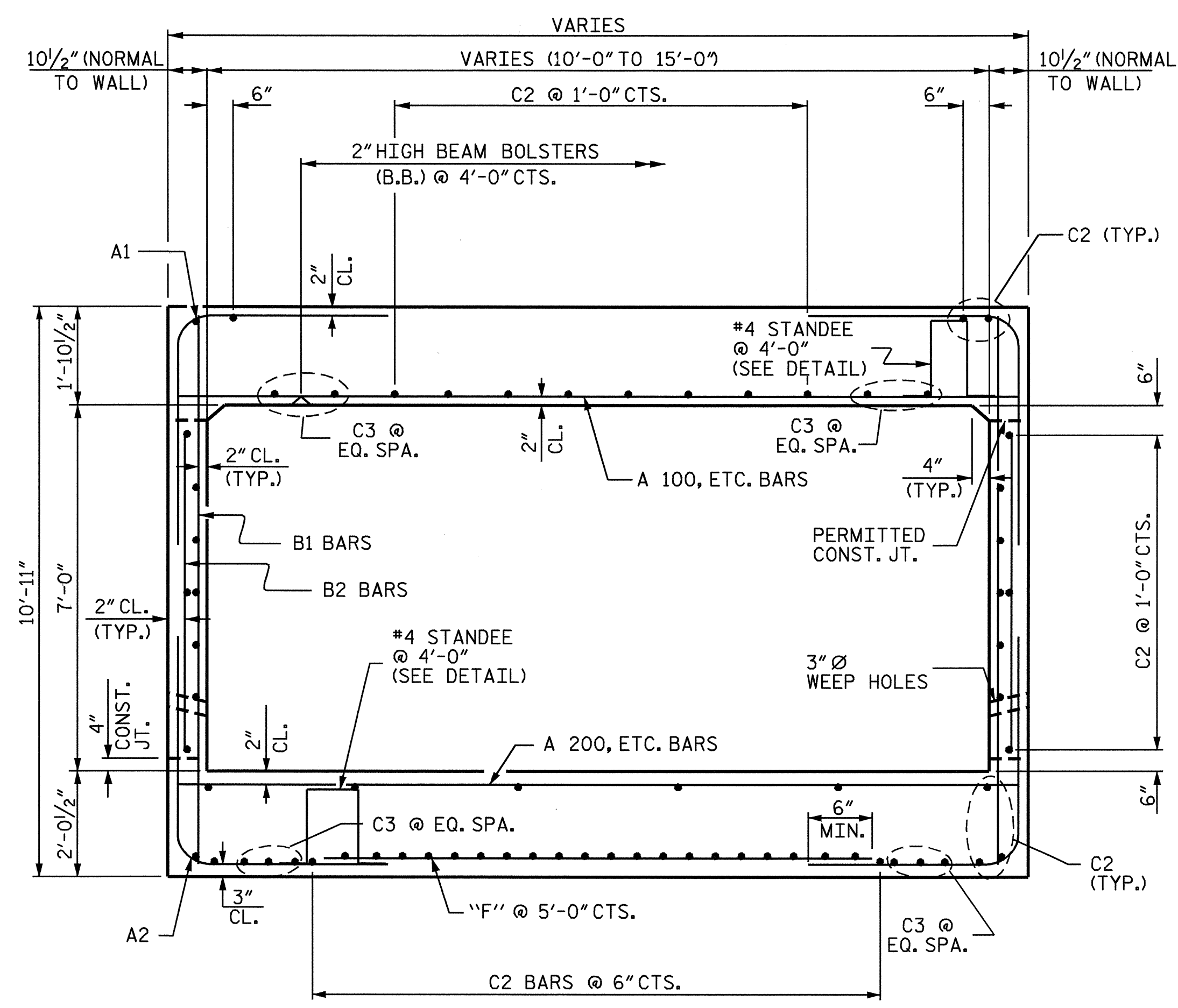
OUTLET END ELEVATION

(NORMAL TO SKEW)



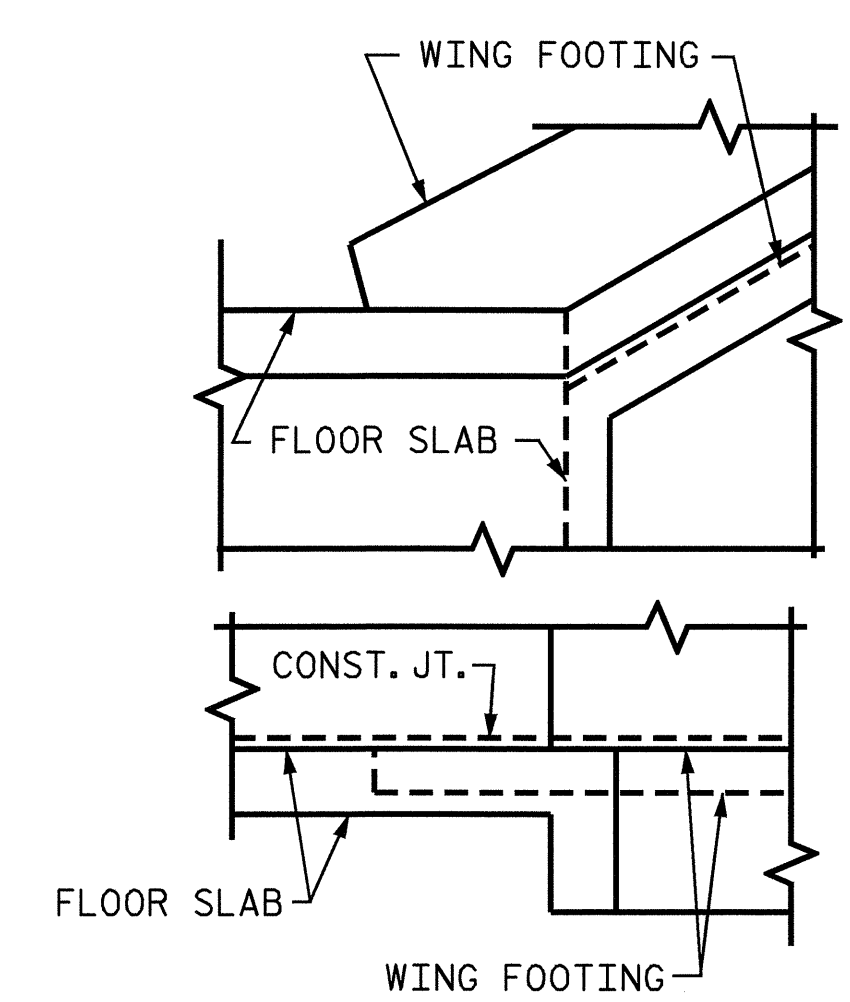
RIGHT ANGLE SECTION OF BARREL

THERE ARE 53-C1 BARS IN SECTION OF BARREL



RIGHT ANGLE SECTION OF BARREL AT TAPERED INLET

THERE ARE 70-C BARS IN SECTION OF BARREL



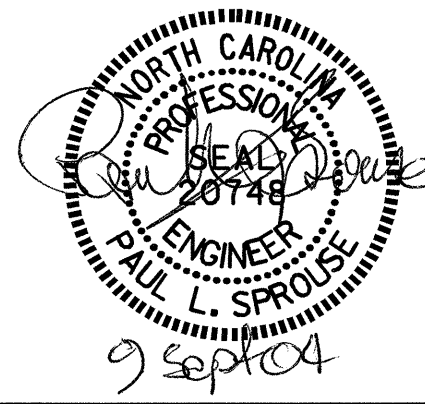
CONNECTION OF WING FOOTING AND FLOOR SLAB WHEN SLAB IS THICKER THAN FOOTING

PROJECT NO. R-2417BB
LEE COUNTY
STATION: 508+40.00 -L-

SHEET 2 OF 6

STATE OF NORTH CAROLINA
DEPARTMENT OF TRANSPORTATION
RALEIGH
BARREL STANDARD
SINGLE 10 FT. X 7 FT.
CONCRETE BOX CULVERT
WITH SIDE TAPERED INLET
52° SKEW

REVISIONS						SHEET NO. C-2
NO.	BY:	DATE:	NO.	BY:	DATE:	
1			3			TOTAL SHEETS 11
2			4			



DRAWN BY: D.A. STARK DATE: 3/03
CHECKED BY: P. SPROUSE DATE: 4/03