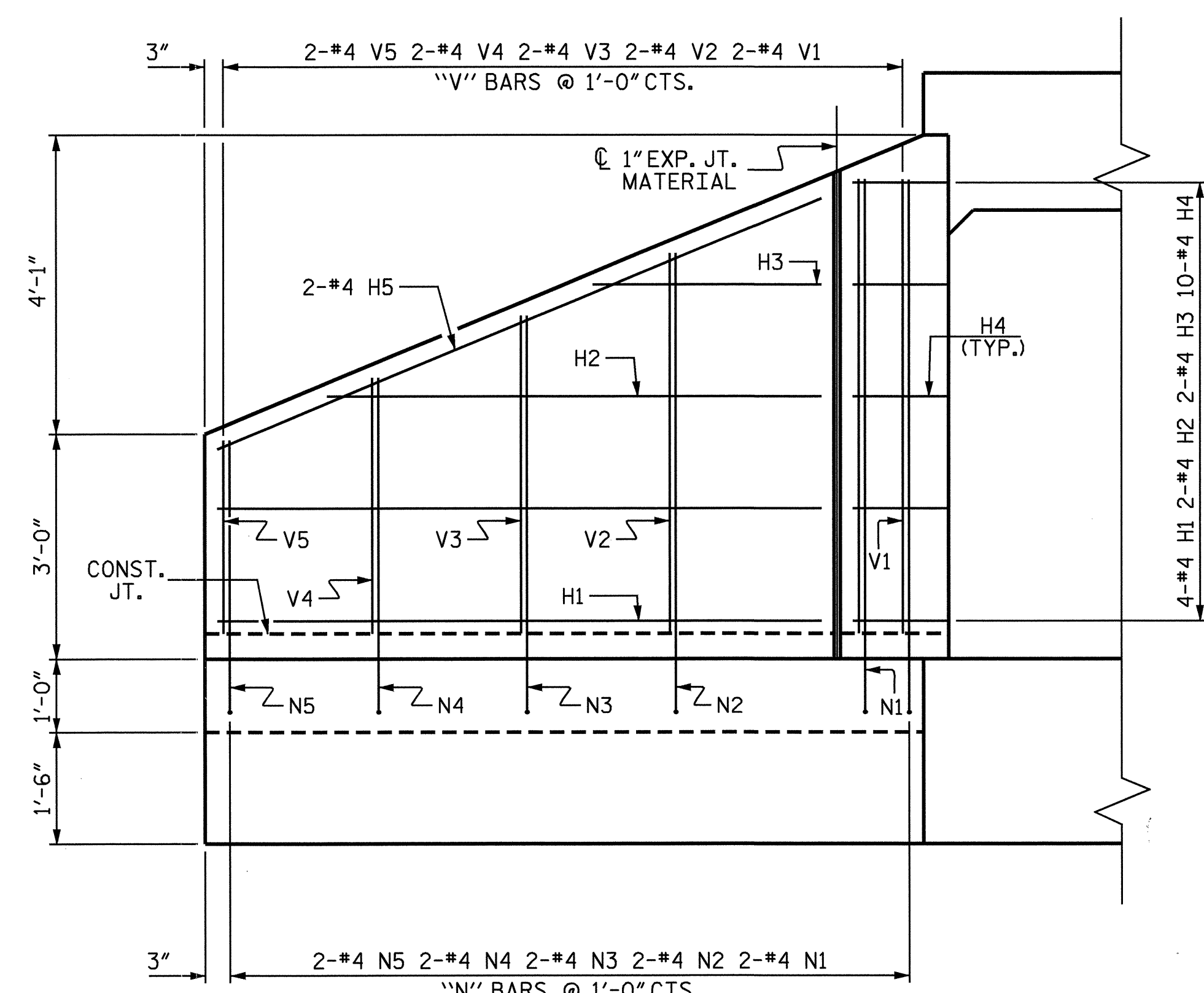
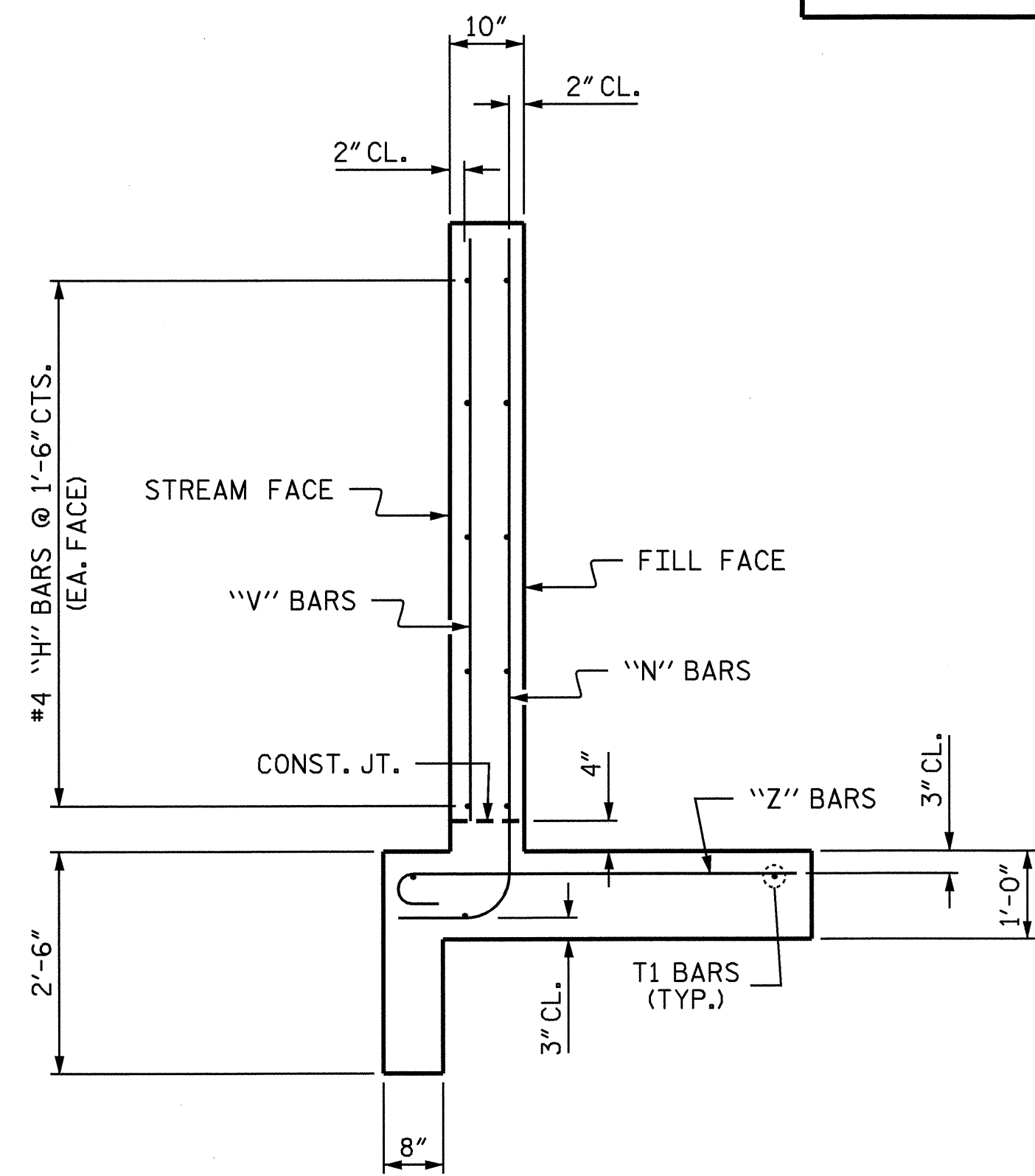


PLAN-INLET WINGS



ELEVATION-INLET WINGS



TYPICAL WING SECTION

BAR TYPES

ALL BAR DIMENSIONS ARE OUT TO OUT.

Z1	4'-3"	6"
Z2	3'-9"	6"
Z3	3'-3"	6"
Z4	2'-10"	6"
Z5	2'-5"	6"

BILL OF MATERIAL

INLET WINGS

BAR NO.	SIZE	TYPE	LENGTH	WEIGHT
H1	#4	STR	8'-1"	43
H2	#4	STR	6'-8"	18
H3	#4	STR	3'-1"	8
H4	#4	1	3'-3"	43
H5	#4	STR	8'-9"	23
N1	#4	2	8'-2"	22
N2	#4	2	7'-1"	19
N3	#4	2	6'-3"	17
N4	#4	2	5'-5"	14
N5	#4	2	4'-7"	12
T1	#5	STR	10'-0"	63
V1	#4	STR	6'-1"	16
V2	#4	STR	5'-1"	14
V3	#4	STR	4'-3"	11
V4	#4	STR	3'-5"	9
V5	#4	STR	2'-7"	7
Z1	#4	3	4'-9"	13
Z2	#4	3	4'-3"	17
Z3	#4	3	3'-9"	10
Z4	#4	3	3'-4"	9
Z5	#4	3	2'-11"	8

REINFORCING STEEL FOR 2 INLET WINGS 396 LBS

CLASS A CONCRETE

2 INLET WINGS	6.9	CY
1 HEADWALL	0.6	CY
END CURTAIN WALL	0.7	CY
TOTAL	8.2	CY

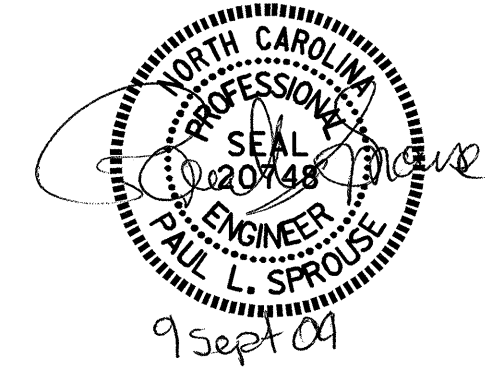
PROJECT NO. R-2417BB
LEE COUNTY
STATION: 532+67.00 -L-

SHEET 4 OF 5

STATE OF NORTH CAROLINA
DEPARTMENT OF TRANSPORTATION
RALEIGH

STANDARD WINGS FOR CONCRETE BOX CULVERT

H = 6'-0" SLOPE = 2:1
90° SKEW



REVISIONS						SHEET NO.
NO.	BY:	DATE:	NO.	BY:	DATE:	C-10
1			3			TOTAL SHEETS
2			4			11

ASSEMBLED BY : K.W.ALFORD DATE : 3/03
CHECKED BY : P.SPROUSE DATE : 3/03
DRAWN BY : CCJ 10/99
CHECKED BY : RWW 03/00