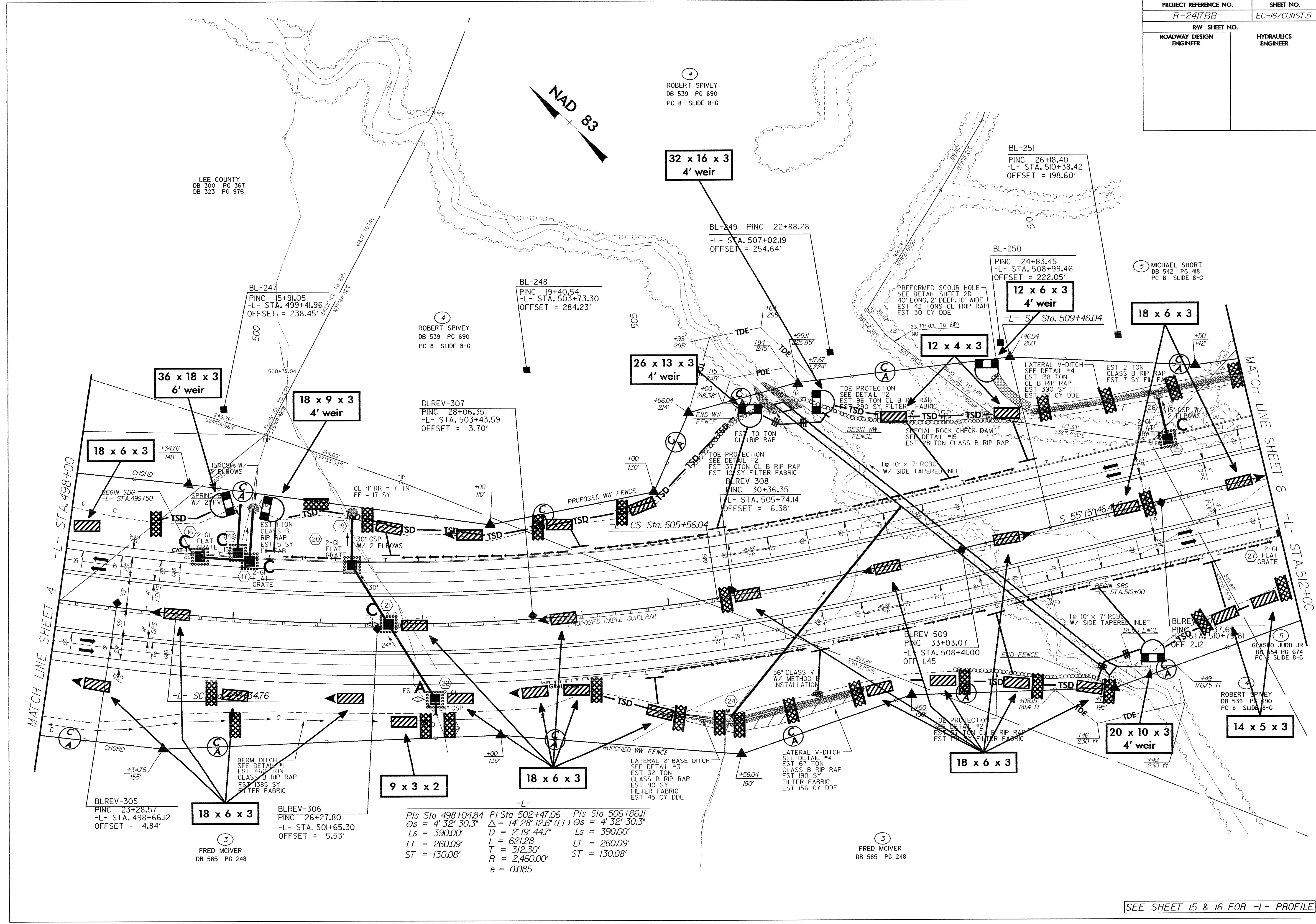


PROJECT REFERENCE NO.	SHEET NO.
R-247BB	EC-16/CONST.5
RW SHEET NO.	
ROADWAY DESIGN ENGINEER	HYDRAULICS ENGINEER



LEE COUNTY
DB 300 PG 367
DB 323 PG 376

4
ROBERT SPIVEY
DB 539 PG 690
PC 8 SLIDE 8-G

4
ROBERT SPIVEY
DB 539 PG 690
PC 8 SLIDE 8-G

5
MICHAEL SHORT
DB 542 PG 418
PC 8 SLIDE 8-G

5
GLASCO JUDD JR
DB 554 PG 674
PC 8 SLIDE 8-G

4
ROBERT SPIVEY
DB 539 PG 690
PC 8 SLIDE 8-G

3
FRED MCIVER
DB 585 PG 248

3
FRED MCIVER
DB 585 PG 248

-L-
 PIs Sta 498+04.84 PI Sta 502+47.06 PIs Sta 506+86.11
 $\theta_s = 4' 32' 30.3''$ $\Delta = 14' 28' 12.6''$ (LT) $\theta_s = 4' 32' 30.3''$
 $L_s = 390.00'$ $D = 2' 19' 44.7''$ $L_s = 390.00'$
 $LT = 260.09'$ $L = 621.28'$ $LT = 260.09'$
 $ST = 130.08'$ $T = 312.30'$ $ST = 130.08'$
 $R = 2,460.00'$
 $e = 0.085$

SEE SHEET 15 & 16 FOR -L- PROFILE