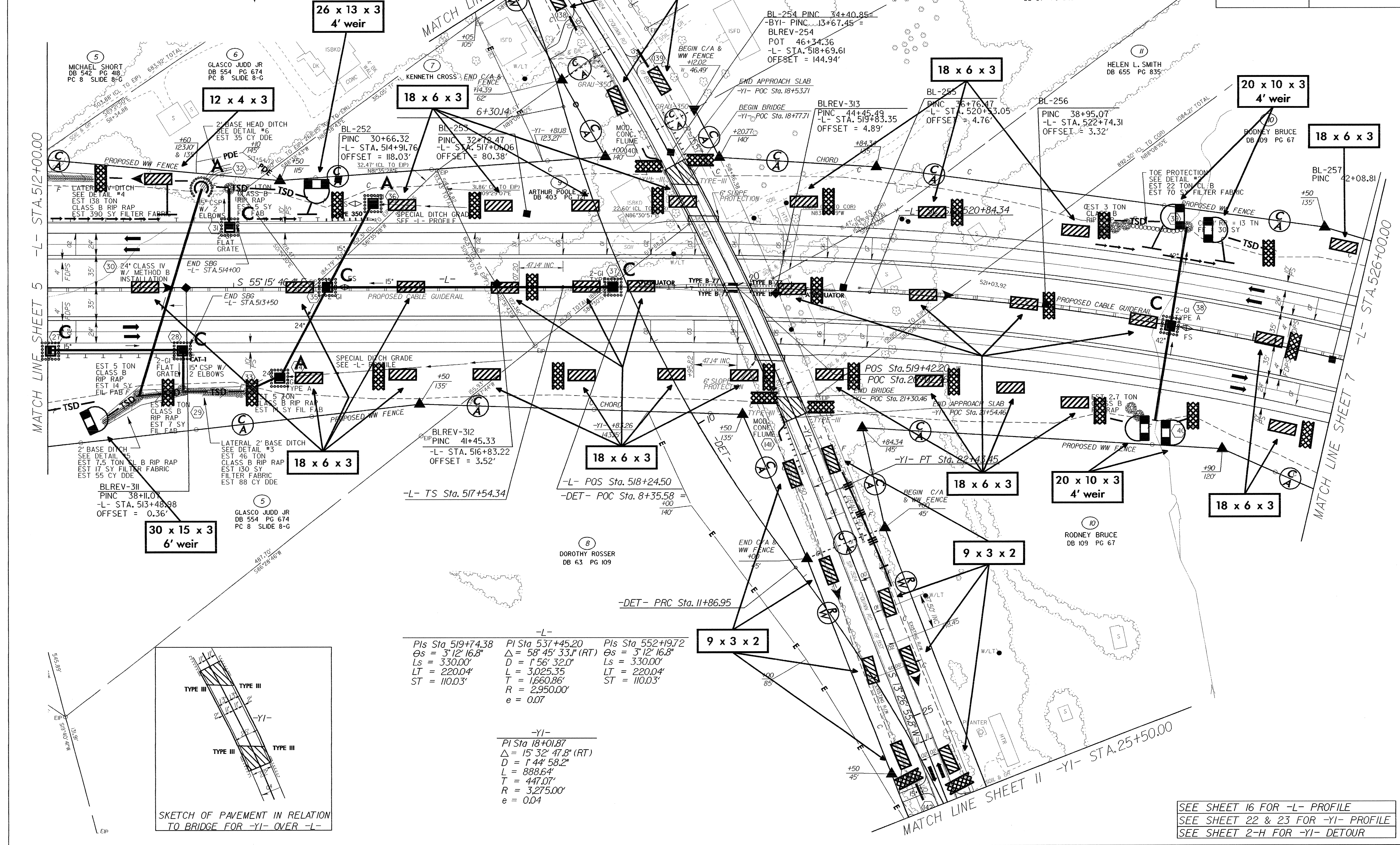


REVISIONS

R/W REVISION, ELIMINATED THE PROPOSED CONTROL OF ACCESS ON PARCEL NO 13, BAM

NAD 83

PROJECT REFERENCE NO.	SHEET NO.
R-2417BB	EC-17/CONST.6
R/W SHEET NO.	
ROADWAY DESIGN ENGINEER	HYDRAULICS ENGINEER



MATCH LINE SHEET 5 -L- STA. 512+00.00

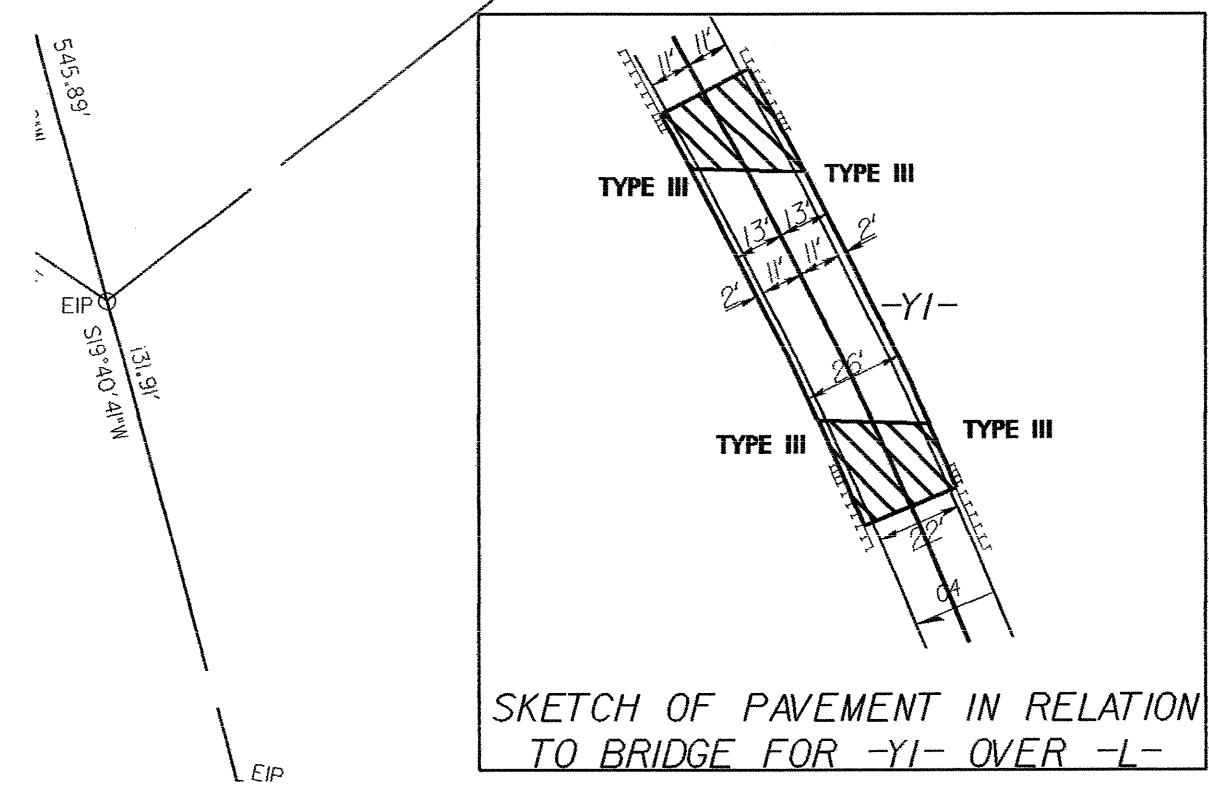
MATCH LINE SHEET 7 -L- STA. 526+00.00

-L-

Pls Sta 519+74.38 Cs = 3' 12" 16.8" Ls = 330.00' LT = 220.04' ST = 110.03'	Pls Sta 537+45.20 Δ = 58' 45" 33.1" (RT) D = 1' 56" 32.0" L = 3,025.35' T = 1,660.86' R = 2,950.00' e = 0.07	Pls Sta 552+19.72 Cs = 3' 12" 16.8" Ls = 330.00' LT = 220.04' ST = 110.03'
--	--	--

-YI-

Pl Sta 18+01.87 Δ = 15' 32" 47.8" (RT) D = 1' 44" 58.2" L = 888.64' T = 447.07' R = 3,275.00' e = 0.04
--



SEE SHEET 16 FOR -L- PROFILE
SEE SHEET 22 & 23 FOR -YI- PROFILE
SEE SHEET 2-H FOR -YI- DETOUR