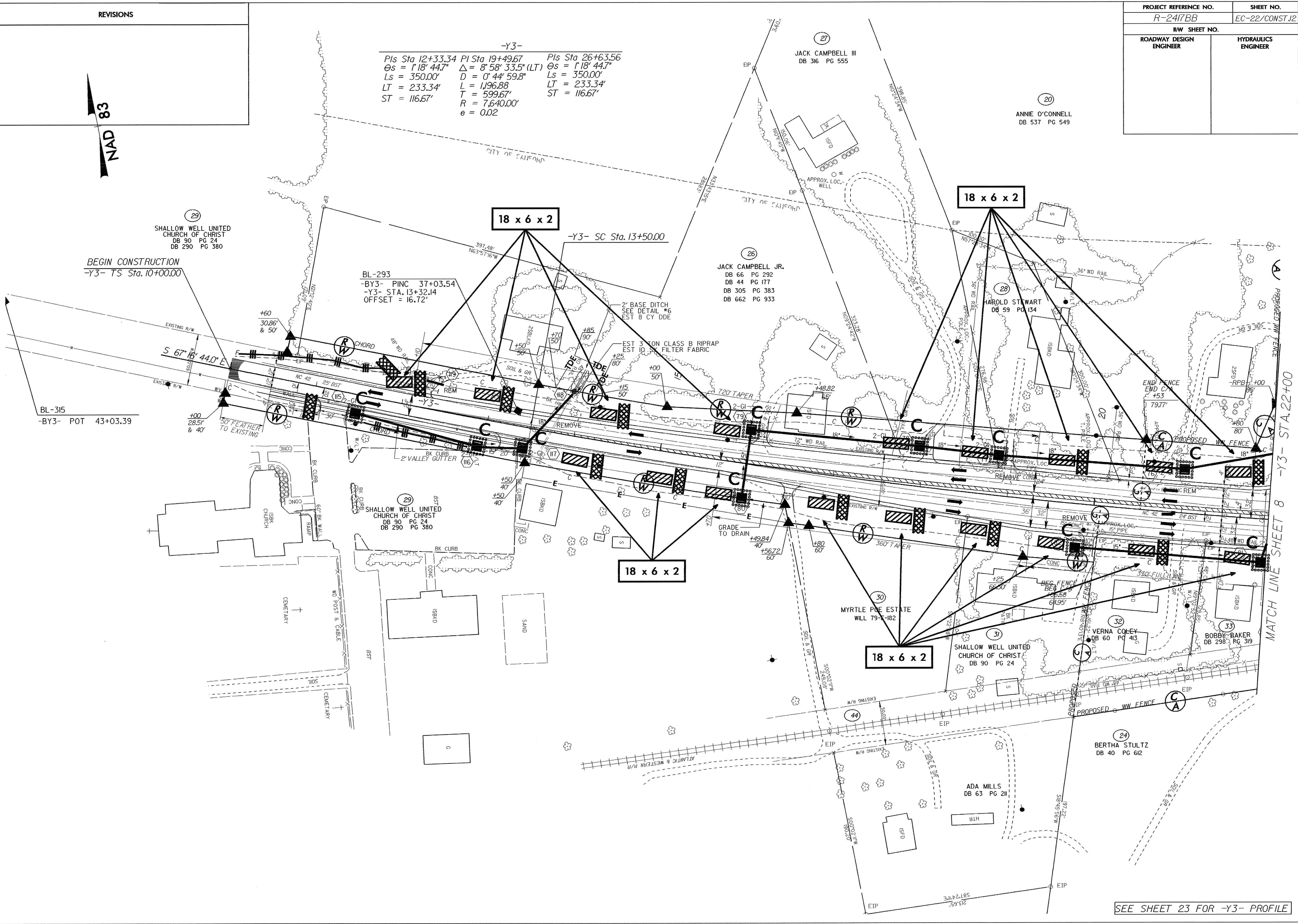


REVISIONS

NAD 83

PROJECT REFERENCE NO.	SHEET NO.
R-2417BB	EC-22/CONST.12
RW SHEET NO.	
ROADWAY DESIGN ENGINEER	HYDRAULICS ENGINEER

-Y3-
 Pls Sta 12+33.34 PI Sta 19+49.67 Pls Sta 26+63.56
 $\Theta_s = 1'18'' 44.7''$ $\Delta = 8'58'' 33.5'' (LT)$ $\Theta_s = 1'18'' 44.7''$
 $L_s = 350.00'$ $D = 0'44'' 59.8''$ $L_s = 350.00'$
 $LT = 233.34'$ $L = 1196.88'$ $LT = 233.34'$
 $ST = 116.67'$ $T = 599.67'$ $ST = 116.67'$
 $R = 7,640.00'$
 $e = 0.02$



SEE SHEET 23 FOR -Y3- PROFILE