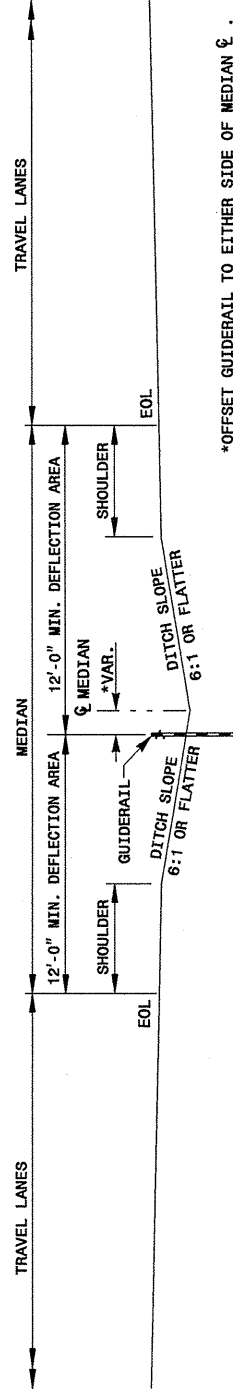


16-APR-2004 09:42
 M:\Special Details\ercward\stds\02\stds to Special Details\english\86501\086501.dgn
 ercward AT 05212260

5/14/99

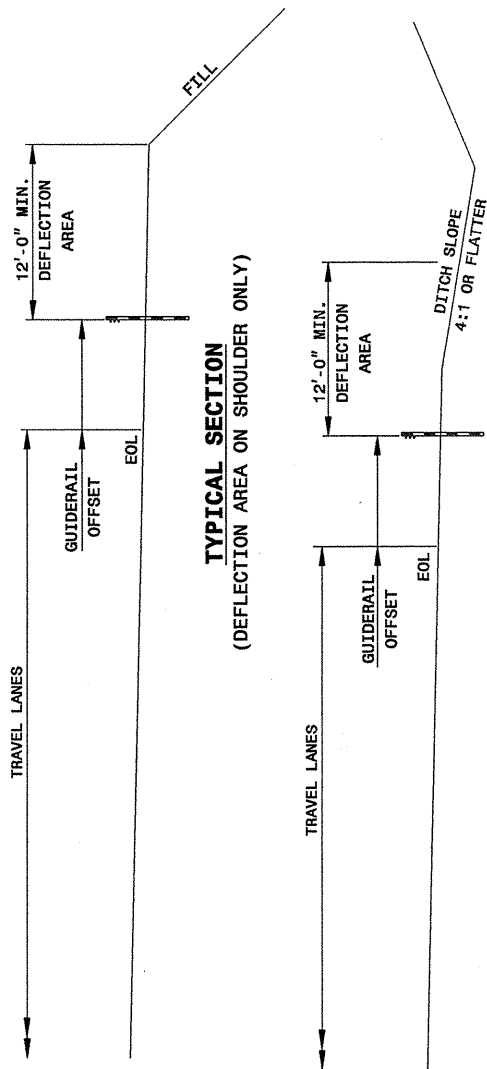
STATE OF
 NORTH CAROLINA
 DEPT. OF TRANSPORTATION
 DIVISION OF HIGHWAYS
 RALEIGH, N.C.



*OFFSET GUIDERAIL TO EITHER SIDE OF MEDIAN & USE 8'-0" MIN. OFFSET FOR MEDIANS 60' AND OVER. USE 4'-0" MIN. OFFSET FOR MEDIANS LESS THAN 60'.

TYPICAL SECTION
 (DEFLECTION AREA ON MEDIAN SLOPES)
DOUBLE FACE GUIDERAIL APPLICATION

ENGLISH DETAIL DRAWING FOR
CABLE GUIDERAIL
 DESIGN AND PLACEMENT



TYPICAL SECTION
 (DEFLECTION AREA ON SHOULDER ONLY)

TYPICAL SECTION
 (DEFLECTION AREA ON SHOULDER AND DITCH SLOPE)
SINGLE FACE GUIDERAIL APPLICATION

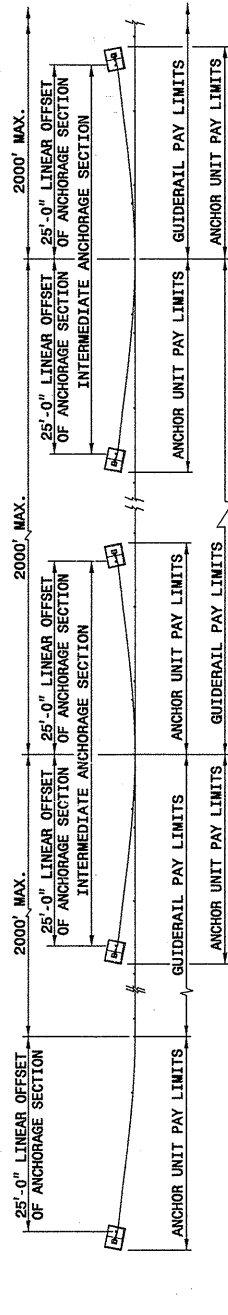
STATE OF
 NORTH CAROLINA
 DEPT. OF TRANSPORTATION
 DIVISION OF HIGHWAYS
 RALEIGH, N.C.

ENGLISH DETAIL DRAWING FOR
CABLE GUIDERAIL
 DESIGN AND PLACEMENT

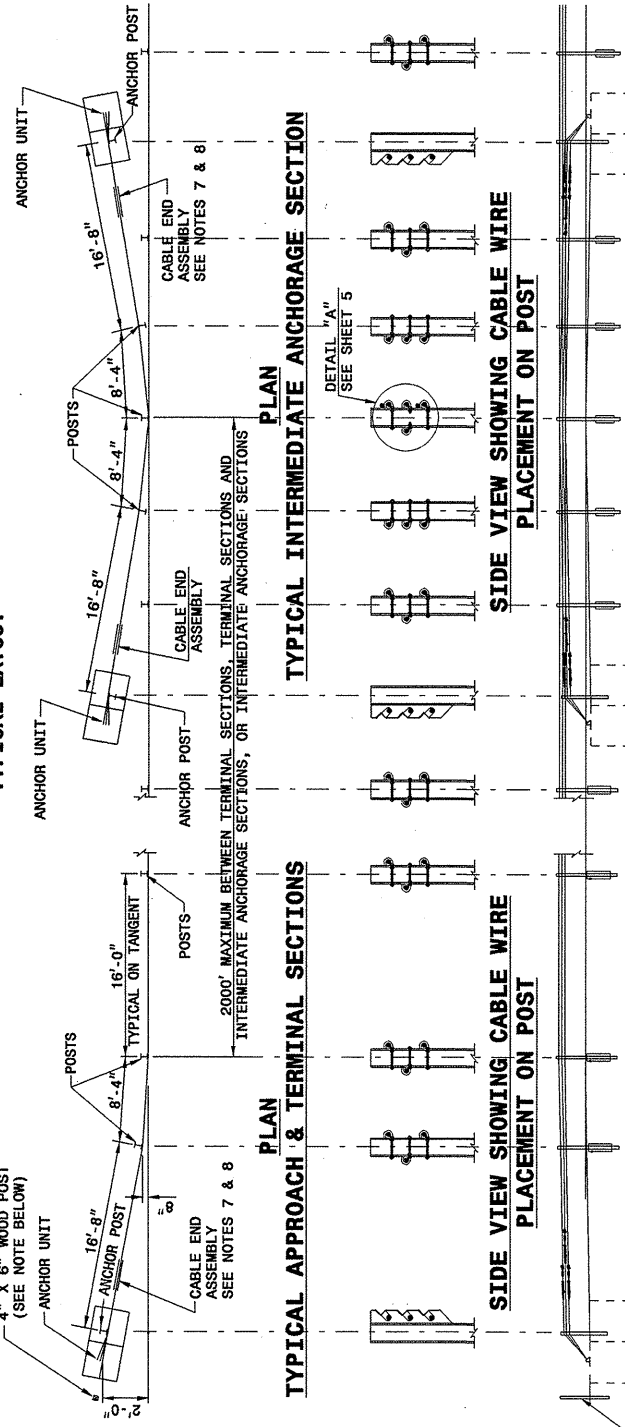
SHEET 3 OF 11
865D01

SHEET 3 OF 11
865D01

STATE OF
 NORTH CAROLINA
 DEPT. OF TRANSPORTATION
 DIVISION OF HIGHWAYS
 RALEIGH, N.C.



PLAN LAYOUT



ELEVATION

TYPICAL APPROACH & TERMINAL SECTIONS

ELEVATION
TYPICAL INTERMEDIATE ANCHORAGE SECTION

STATE OF
 NORTH CAROLINA
 DEPT. OF TRANSPORTATION
 DIVISION OF HIGHWAYS
 RALEIGH, N.C.

ENGLISH DETAIL DRAWING FOR
CABLE GUIDERAIL
 GUIDERAIL LAYOUT

SHEET 4 OF 11
865D01

SHEET 4 OF 11
865D01

DESIGN SERVICES UNIT
 STANDARDS AND SPECIAL DESIGN
 Office 919-250-4128 FAX 919-250-4119

SEE PLATE FOR TITLE

ORIGINAL BY: 2002 STANDARDS DATE: 1-15-02
 MODIFIED BY: E.E. WARD DATE: 4-07-04
 CHECKED BY: DATE:
 FILE SPEC.: /usr/std/02stds to details/english/86501/086501.dgn