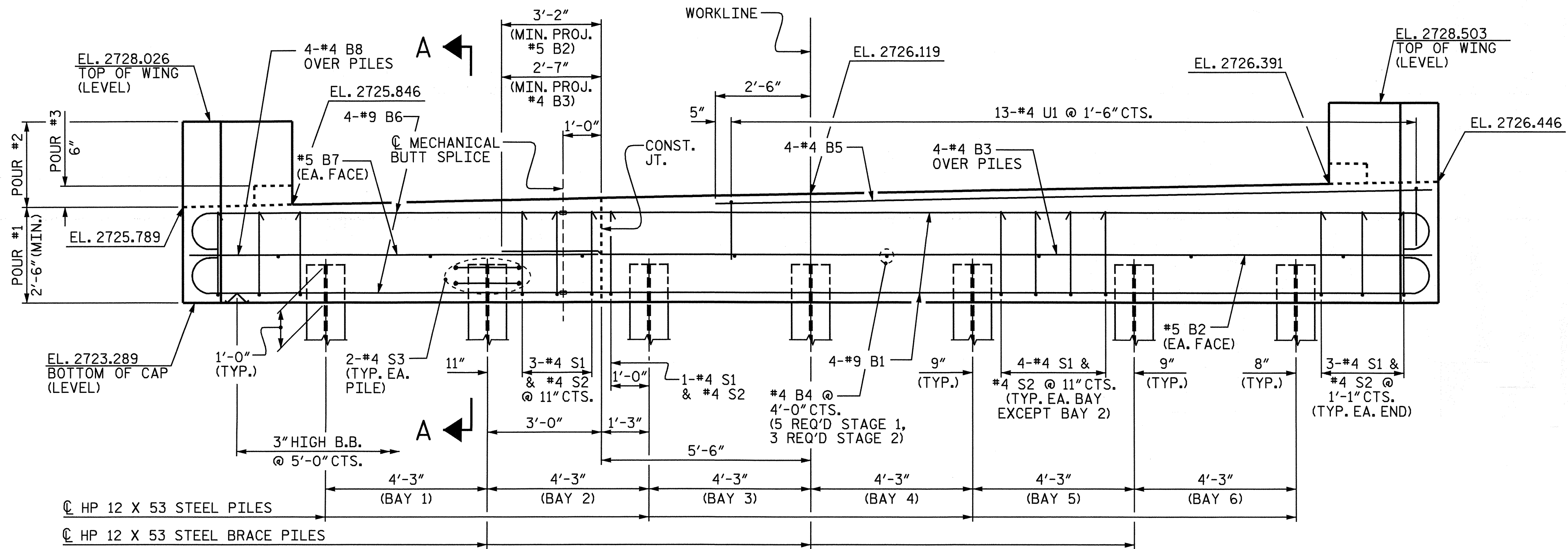


PLAN



ELEVATION

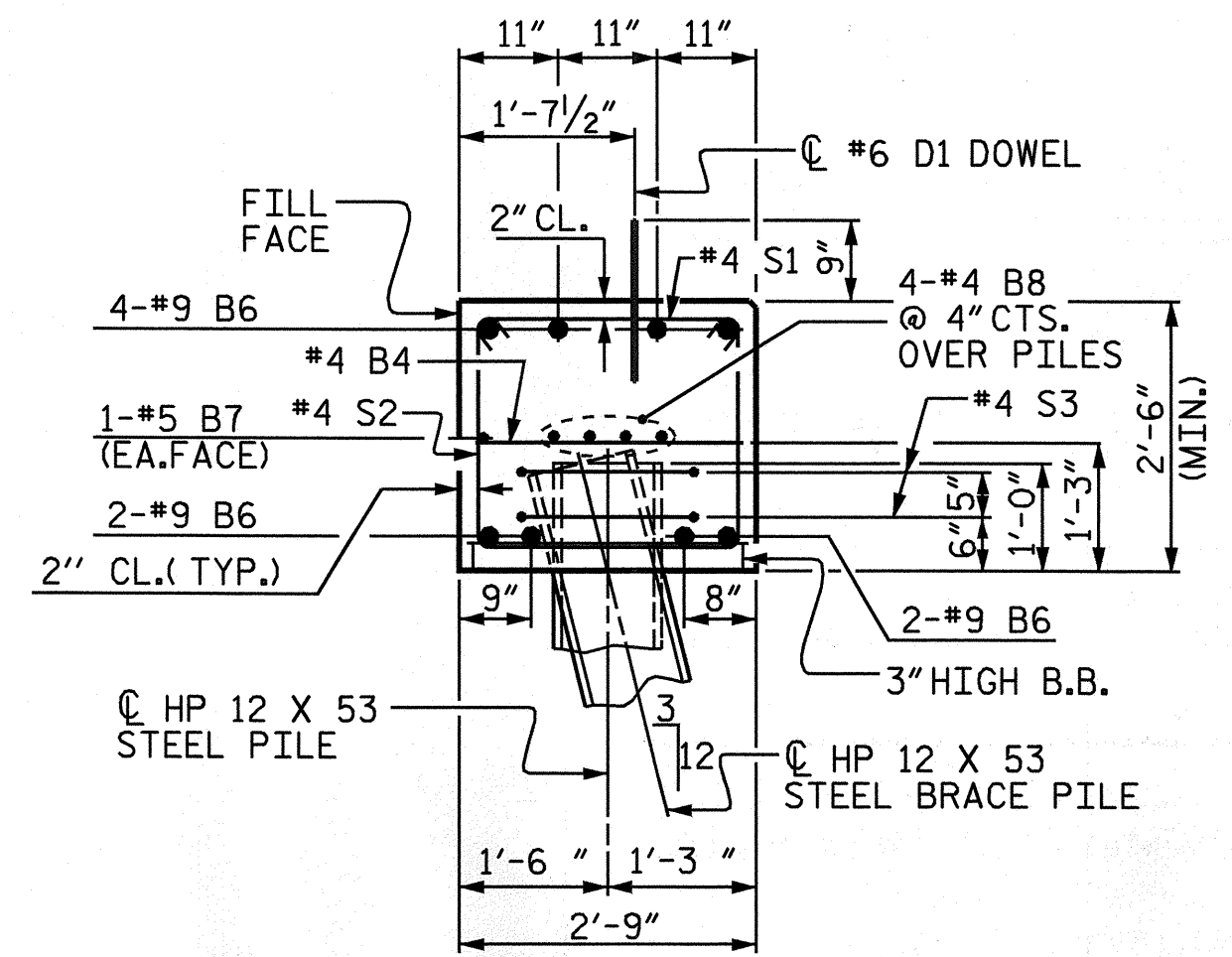
NOTES

STIRRUPS IN CAP MAY BE SHIFTED AS NECESSARY TO CLEAR DOWELS.

THE LATERAL GUIDE AT THE END OF THE CAP IS NOT TO BE POURED UNTIL AFTER THE CORED SLAB UNITS ARE IN PLACE.

THE CONTRACTOR SHALL PROVIDE FOR INSTALLATION OF THE 4" DIAMETER DRAIN PIPE THROUGH THE WING WALL AS REQUIRED FOR REINFORCED BRIDGE APPROACH FILLS, SEE THE ROADWAY PLANS. REINFORCING STEEL IN THE WING WALL MAY BE SHIFTED AS NECESSARY TO CLEAR THE DRAIN PIPE.

MECHANICAL COUPLERS SHALL BE USED TO JOIN THE REINFORCING STEEL IN STAGE 2 TO REINFORCING STEEL IN STAGE 1. SEE SPECIAL PROVISIONS FOR MECHANICAL BUTT SPICING FOR REINFORCING STEEL.

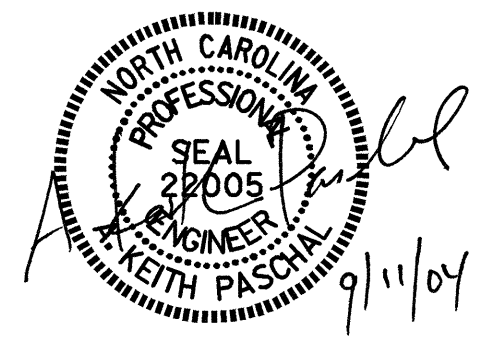


SECTION A-A

PROJECT NO. B-3667
JACKSON COUNTY
 STATION: 12+52.50 -L-

SHEET 1 OF 3

REVISIONS						SHEET NO.	
NO.	BY:	DATE:	NO.	BY:	DATE:	S-11	
1			3			TOTAL SHEETS	
2			4			37	



DRAWN BY : K. McCAULEY DATE : 7/30/04
 CHECKED BY : A. L. MEADOWS DATE : 8/4/04