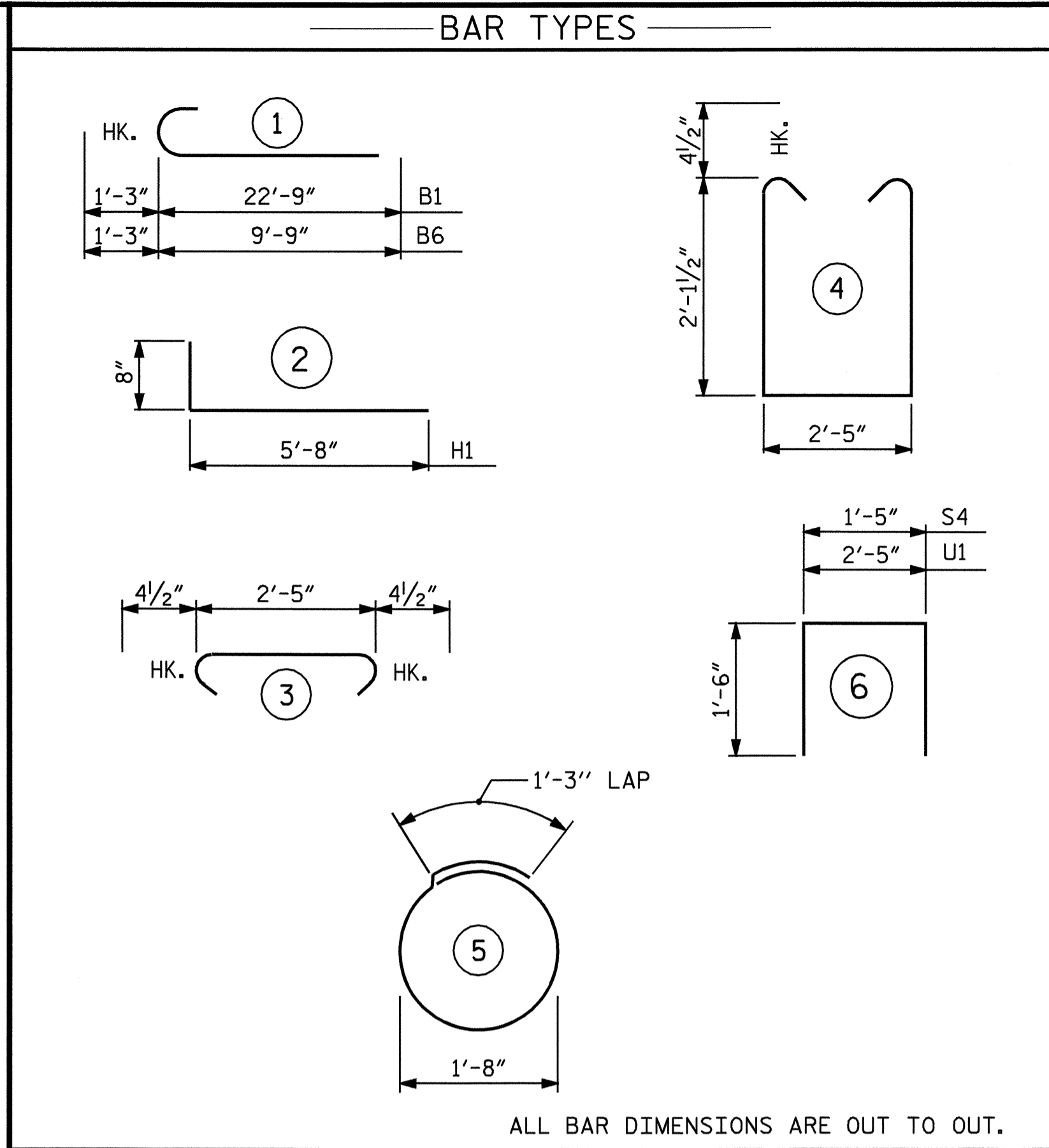
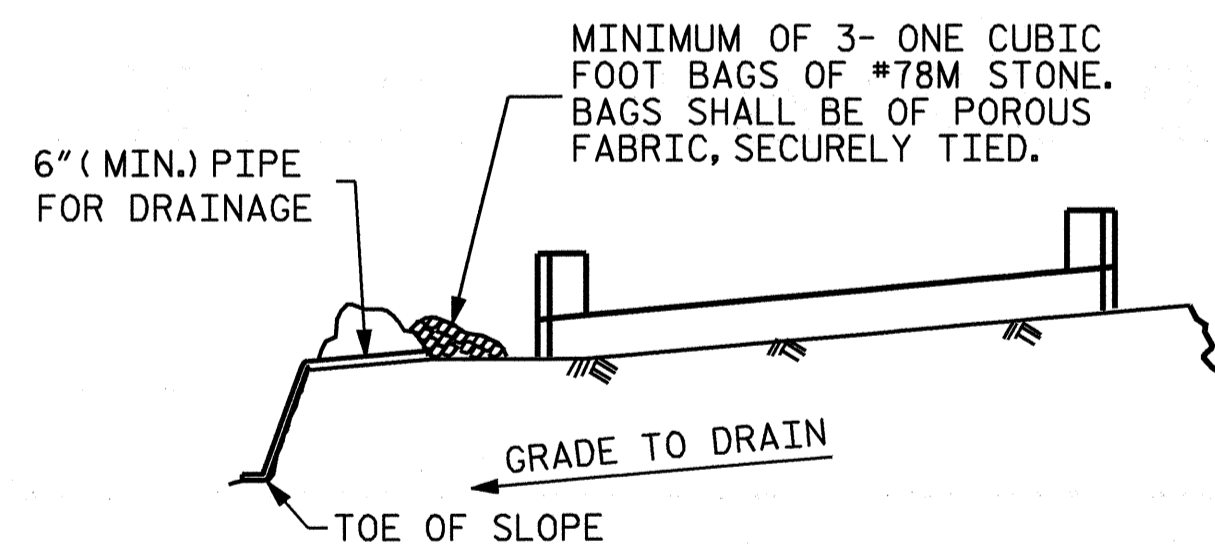


LATERAL GUIDE DETAILS
(EACH END SIMILAR)



BILL OF MATERIAL - END BENT 1											
STAGE 1						STAGE 2					
BAR	NO.	SIZE	TYPE	LENGTH	WEIGHT	BAR	NO.	SIZE	TYPE	LENGTH	WEIGHT
B1	8	9	1	24-0	653	B6	8	9	1	11-0	299
B2	2	5	STR	25-0	52	B7	2	5	STR	10-8	22
B3	4	4	STR	24-5	65	B8	4	4	STR	10-8	29
B4	8	4	STR	2-5	13						
B5	4	4	STR	18-10	50	D1	5	6	STR	1-6	11
D1	13	6	STR	1-6	29	H1	13	4	2	6-4	55
H1	13	4	2	6-4	55	K1	6	4	STR	2-6	10
K1	6	4	STR	2-6	10	S1	10	4	3	3-2	21
						S2	10	4	4	7-5	50
S1	20	4	3	3-2	42	S3	4	4	5	6-6	17
S2	20	4	4	7-5	99	S4	2	4	6	4-5	6
S3	10	4	5	6-6	43						
S4	2	4	6	4-5	6	V1	18	4	STR	4-3	51
U1	13	4	6	5-5	47						
V2	18	4	STR	4-10	58						
REINFORCING STEEL					1222 LBS.	REINFORCING STEEL					571 LBS.
CLASS A CONCRETE (CU. YDS.)						CLASS A CONCRETE (CU. YDS.)					
POUR #1 CAP & LOWER PART OF WING 2						POUR #1 CAP & LOWER PART OF WING 1					
					7.2						3.4
POUR #2 UPPER PART OF WING 2						POUR #2 UPPER PART OF WING 1					
					0.6						0.7
POUR #3 LATERAL GUIDES						POUR #3 LATERAL GUIDES					
					0.1						0.1
TOTAL					7.9	TOTAL					4.2
HP 12 X 53 STEEL PILES NO. 5 (LIN. FT.)						HP 12 X 53 STEEL PILES NO. 2 (LIN. FT.)					
					325.0						130.0
STEEL PILE POINTS						STEEL PILE POINTS					
5 EACH						2 EACH					

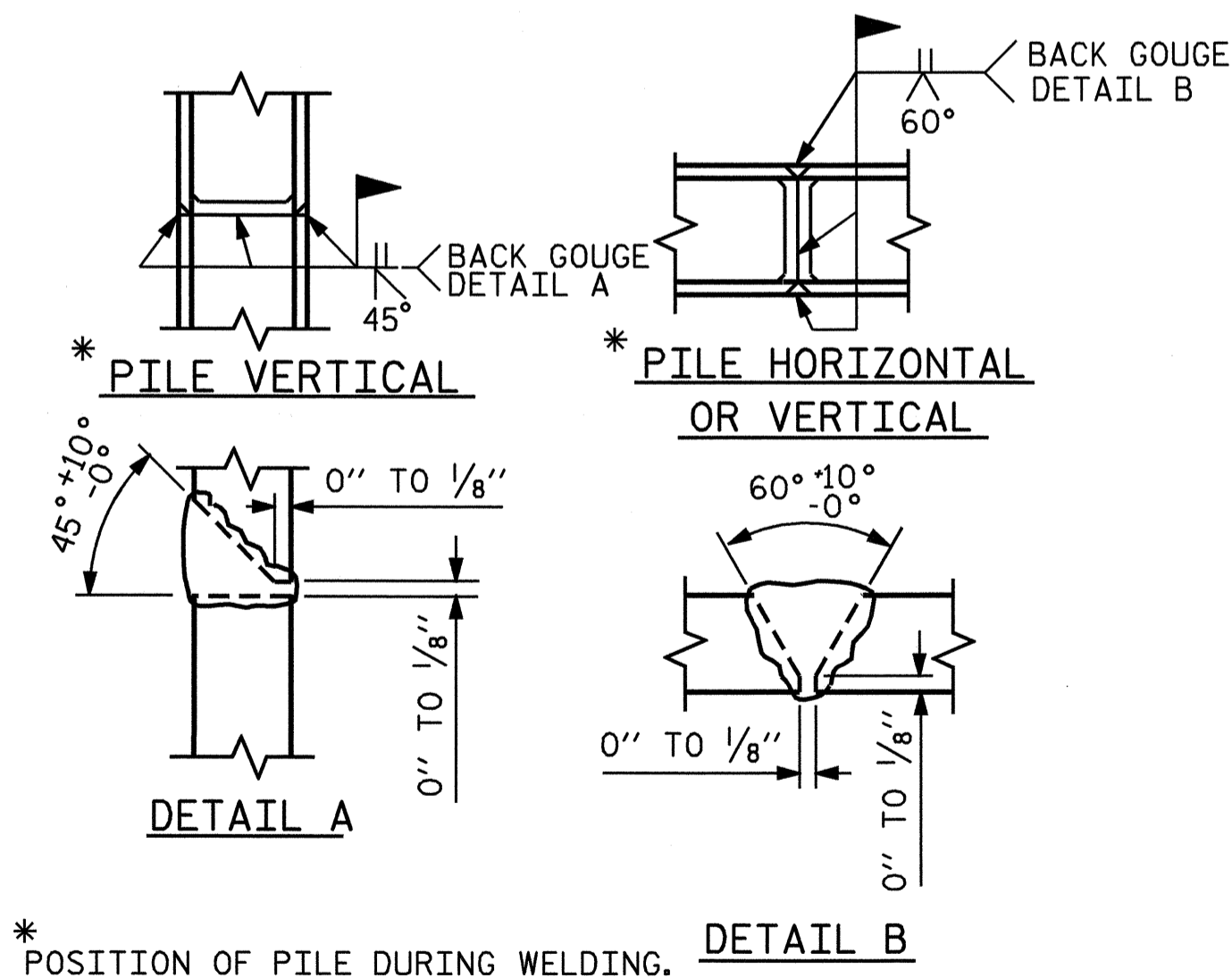


BAGGED STONE AND PIPE SHALL BE PLACED IMMEDIATELY AFTER COMPLETION OF END BENT EXCAVATION. PIPE MAY BE EITHER CONCRETE, CORRUGATED STEEL, CORRUGATED ALUMINUM ALLOY, OR CORRUGATED PLASTIC. PERFORATED PIPE WILL NOT BE ALLOWED.

BAGGED STONE SHALL REMAIN IN PLACE UNTIL THE ENGINEER DIRECTS THAT IT BE REMOVED. THE CONTRACTOR SHALL REMOVE AND DISPOSE OF SILT ACCUMULATIONS AT BAGGED STONE WHEN SO DIRECTED BY THE ENGINEER. BAGS SHALL BE REMOVED AND REPLACED WHENEVER THE ENGINEER DETERMINES THAT THEY HAVE DETERIORATED AND LOST THEIR EFFECTIVENESS.

NO SEPARATE PAYMENT WILL BE MADE FOR THIS WORK AND THE ENTIRE COST OF THIS WORK SHALL BE INCLUDED IN THE UNIT CONTRACT PRICE BID FOR THE SEVERAL PAY ITEMS.

TEMPORARY DRAINAGE AT END BENT



PILE SPLICE DETAILS

PROJECT NO. B-3667
JACKSON COUNTY
 STATION: 12+52.50 -L-

SHEET 3 OF 3

STATE OF NORTH CAROLINA
 DEPARTMENT OF TRANSPORTATION
 RALEIGH

SUBSTRUCTURE
 END BENT 1



DRAWN BY : K. McCAULEY DATE : 8/02/04
 CHECKED BY : A. L. MEADOWS DATE : 8/5/04

09-SEP-2004 15:39
 W:\squadd\3667\str\1\kmccauley\Mlorstation\B3667.sd.E*_01.dgn
 kmccauley

REVISIONS						SHEET NO.	
NO.	BY:	DATE:	NO.	BY:	DATE:	S-13	
1			3			TOTAL SHEETS	
2			4			37	