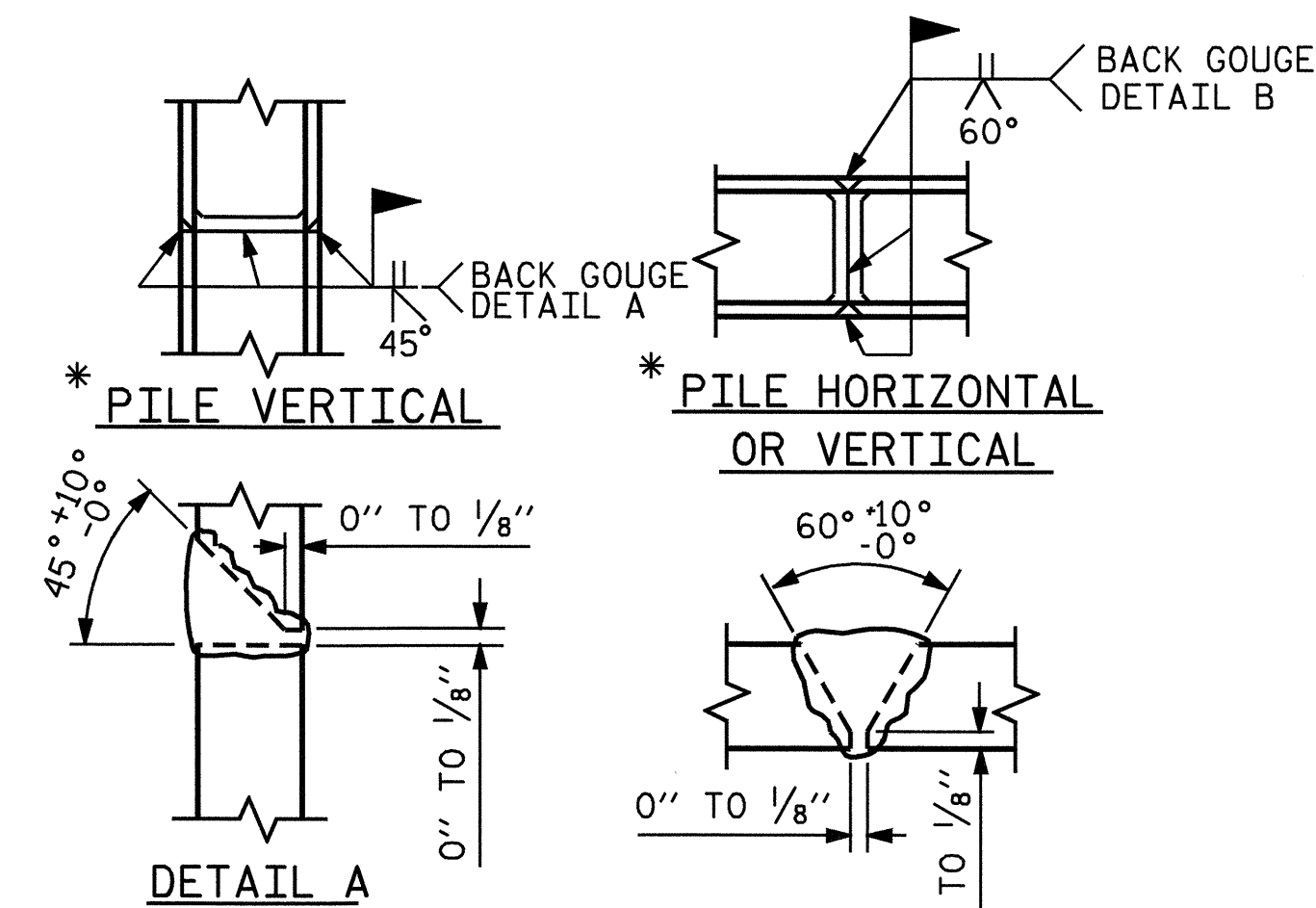


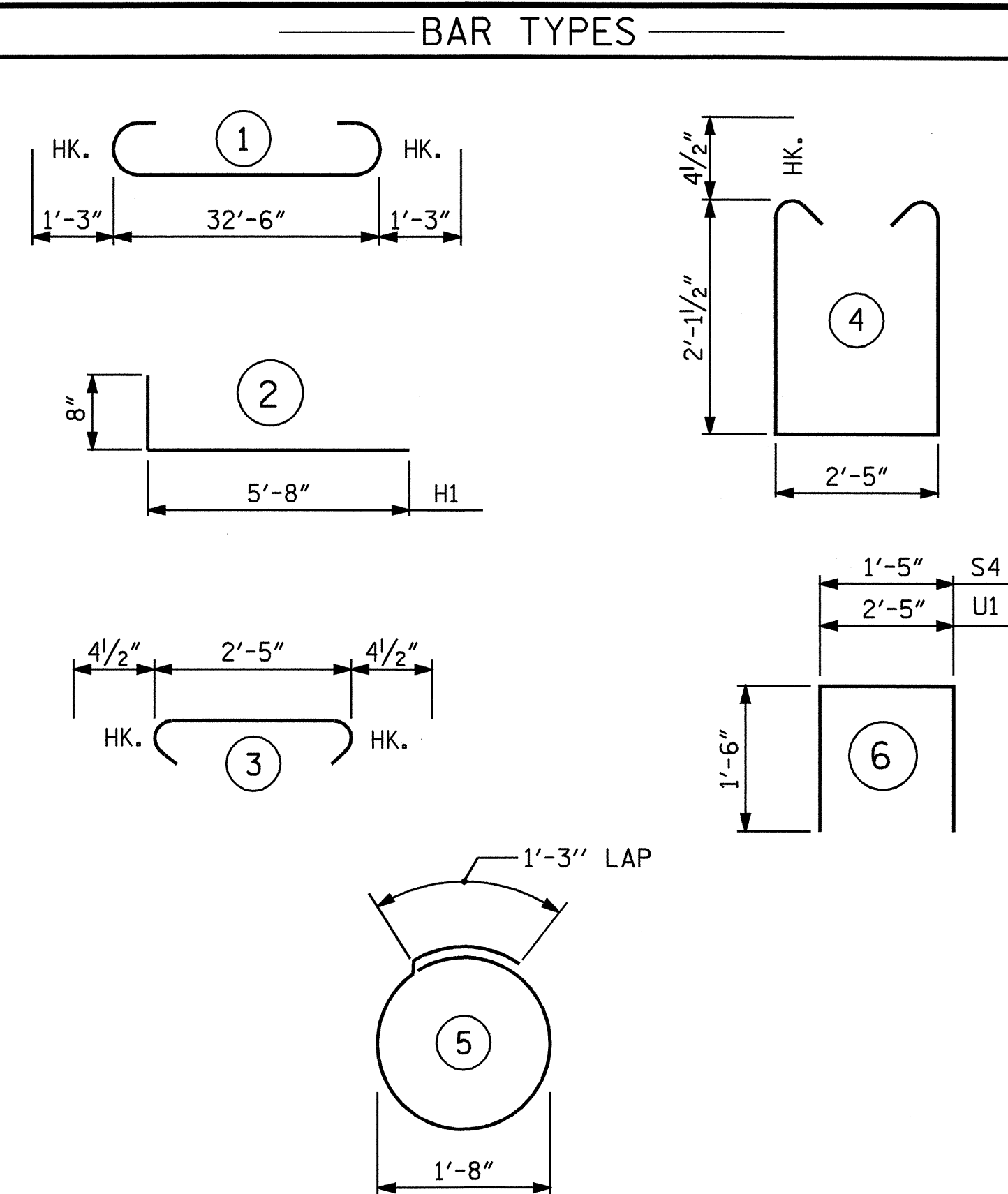
**LATERL GUIDE DETAILS**

(EACH END SIMILAR)



\* POSITION OF PILE DURING WELDING.

**PILE SPLICE DETAILS**



ALL BAR DIMENSIONS ARE OUT TO OUT.

**BILL OF MATERIAL**

**END BENT No. 2**

BAR	NO.	SIZE	TYPE	LENGTH	WEIGHT
B1	8	9	1	35- 0	952
B2	2	5	STR	32- 8	68
B3	8	4	STR	17- 6	94
B4	8	4	STR	2- 5	13
B5	4	4	STR	18-10	50
D1	18	6	STR	1- 6	41
H1	26	4	2	6- 4	110
K1	12	4	STR	2- 6	20
S1	26	4	3	3- 2	55
S2	26	4	4	7- 5	129
S3	14	4	5	6- 6	61
S4	4	4	6	4- 5	12
U1	13	4	6	5- 5	47
V1	18	4	STR	4- 5	53
V2	18	4	STR	4-11	59

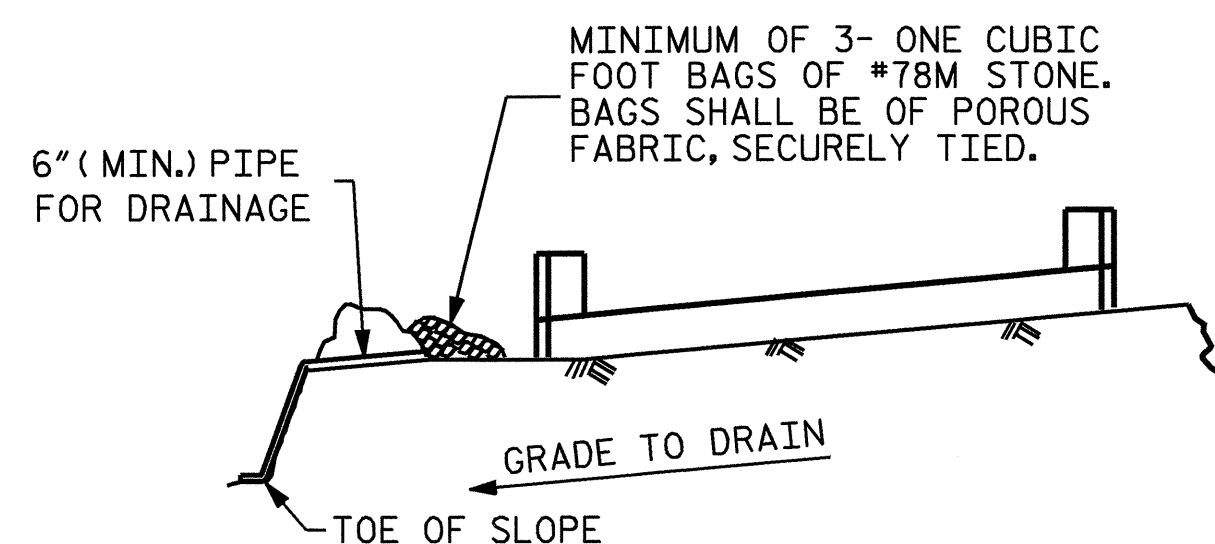
REINFORCING STEEL 1764 LBS.

CLASS A CONCRETE (CU. YDS.)

POUR #1	CAP & LOWER PART OF WINGS	10.6
POUR #2	UPPER PART OF WINGS	1.3
POUR #3	LATERAL GUIDES	0.1

TOTAL 12.0

HP 12 X 53 STEEL PILES	
NO. 7 (LIN. FT.)	385.0
STEEL PILE POINTS	7 EACH



BAGGED STONE AND PIPE SHALL BE PLACED IMMEDIATELY AFTER COMPLETION OF END BENT EXCAVATION. PIPE MAY BE EITHER CONCRETE, CORRUGATED STEEL, CORRUGATED ALUMINUM ALLOY, OR CORRUGATED PLASTIC. PERFORATED PIPE WILL NOT BE ALLOWED.

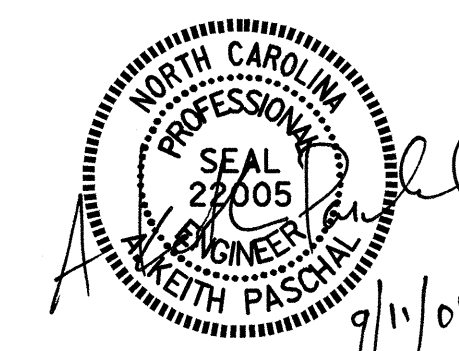
BAGGED STONE SHALL REMAIN IN PLACE UNTIL THE ENGINEER DIRECTS THAT IT BE REMOVED. THE CONTRACTOR SHALL REMOVE AND DISPOSE OF SILT ACCUMULATIONS AT BAGGED STONE WHEN SO DIRECTED BY THE ENGINEER. BAGS SHALL BE REMOVED AND REPLACED WHENEVER THE ENGINEER DETERMINES THAT THEY HAVE DETERIORATED AND LOST THEIR EFFECTIVENESS.

NO SEPARATE PAYMENT WILL BE MADE FOR THIS WORK AND THE ENTIRE COST OF THIS WORK SHALL BE INCLUDED IN THE UNIT CONTRACT PRICE BID FOR THE SEVERAL PAY ITEMS.

**TEMPORARY DRAINAGE AT END BENT**

DRAWN BY : K. McCAULEY DATE : 8/02/04  
 CHECKED BY : A. L. MEADOWS DATE : 8/5/04

09-SEP-2004 15:39  
 W:\sq\sqdp\B3667\str1\kmccauley\microstation\B3667.sd.E\*.dgn  
 kmccauley



PROJECT NO. B-3667  
JACKSON COUNTY  
 STATION: 12+52.50 -L-

SHEET 3 OF 3

STATE OF NORTH CAROLINA  
 DEPARTMENT OF TRANSPORTATION  
 RALEIGH  
 SUBSTRUCTURE  
 END BENT 2

REVISIONS						SHEET NO.
NO.	BY:	DATE:	NO.	BY:	DATE:	S-16
1			3			TOTAL SHEETS
2			4			37