

8/17/04

SCALE: 1" = 30'

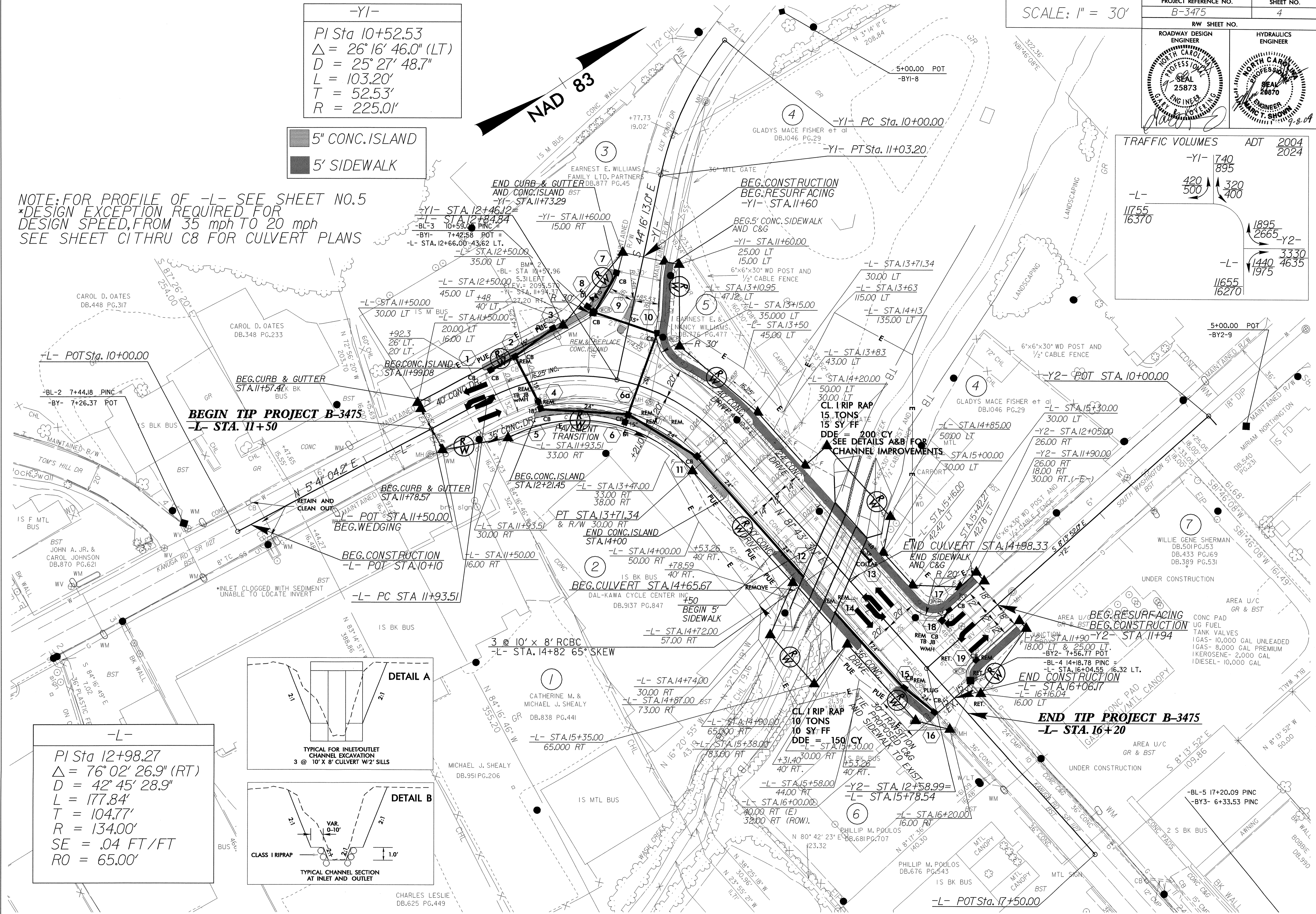
PROJECT REFERENCE NO. B-3475		SHEET NO. 4
RW SHEET NO.		
ROADWAY DESIGN ENGINEER	HYDRAULICS ENGINEER	

TRAFFIC VOLUMES		ADT	2004
-Y1-	740	895	
-L-	420	500	320
-L-	11755	16370	
-Y2-	1895	2665	
-L-	1440	1975	3330
-L-	11655	16270	

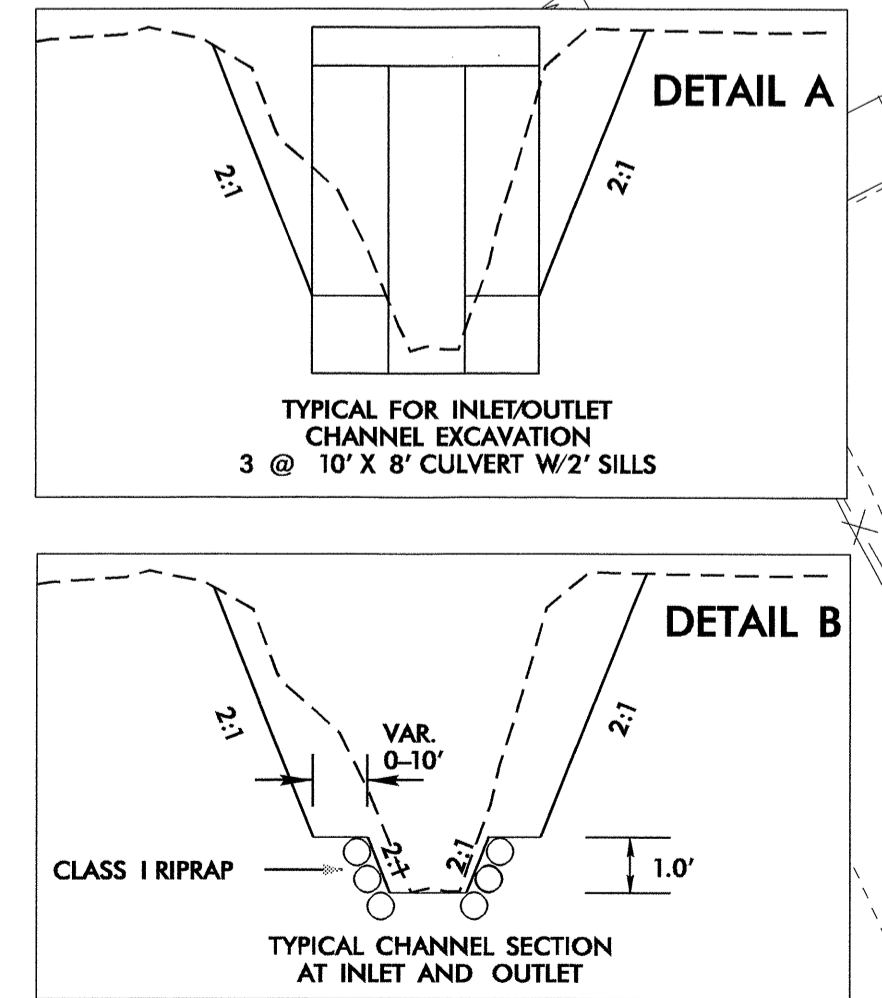
-Y1-
 PI Sta 10+52.53
 $\Delta = 26^{\circ}16'46.0"$ (LT)
 $D = 25^{\circ}27'48.7"$
 $L = 103.20'$
 $T = 52.53'$
 $R = 225.0'$

5" CONC. ISLAND
 5' SIDEWALK

NOTE: FOR PROFILE OF -L- SEE SHEET NO.5
 *DESIGN EXCEPTION REQUIRED FOR
 DESIGN SPEED, FROM 35 mph TO 20 mph
 SEE SHEET CITHRU C8 FOR CULVERT PLANS



-L-
 PI Sta 12+98.27
 $\Delta = 76^{\circ}02'26.9"$ (RT)
 $D = 42^{\circ}45'28.9"$
 $L = 177.84'$
 $T = 104.77'$
 $R = 134.00'$
 $SE = .04$ FT/FT
 $RO = 65.00'$



8/17/04 07:54 psh