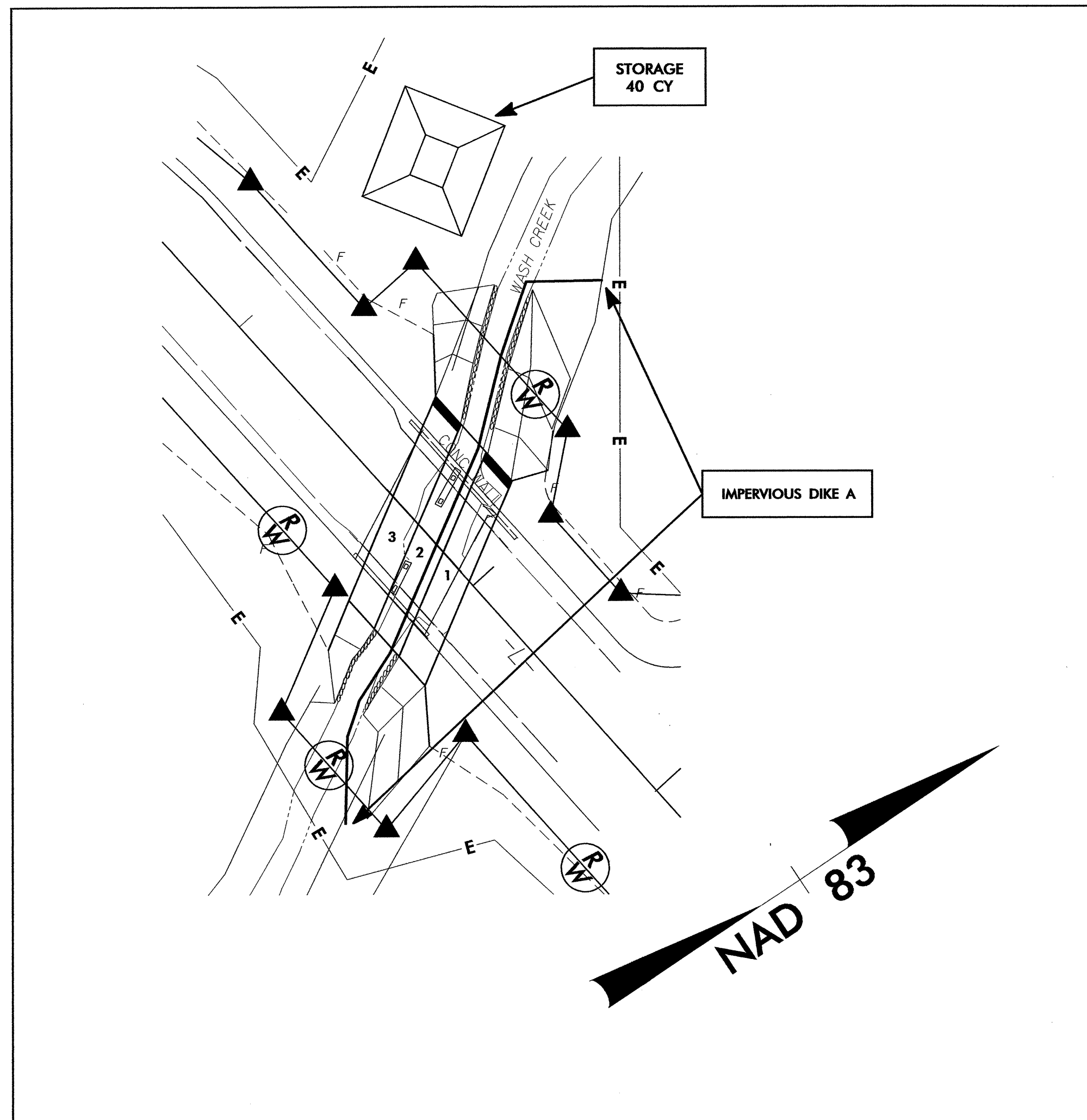


CULVERT PHASING

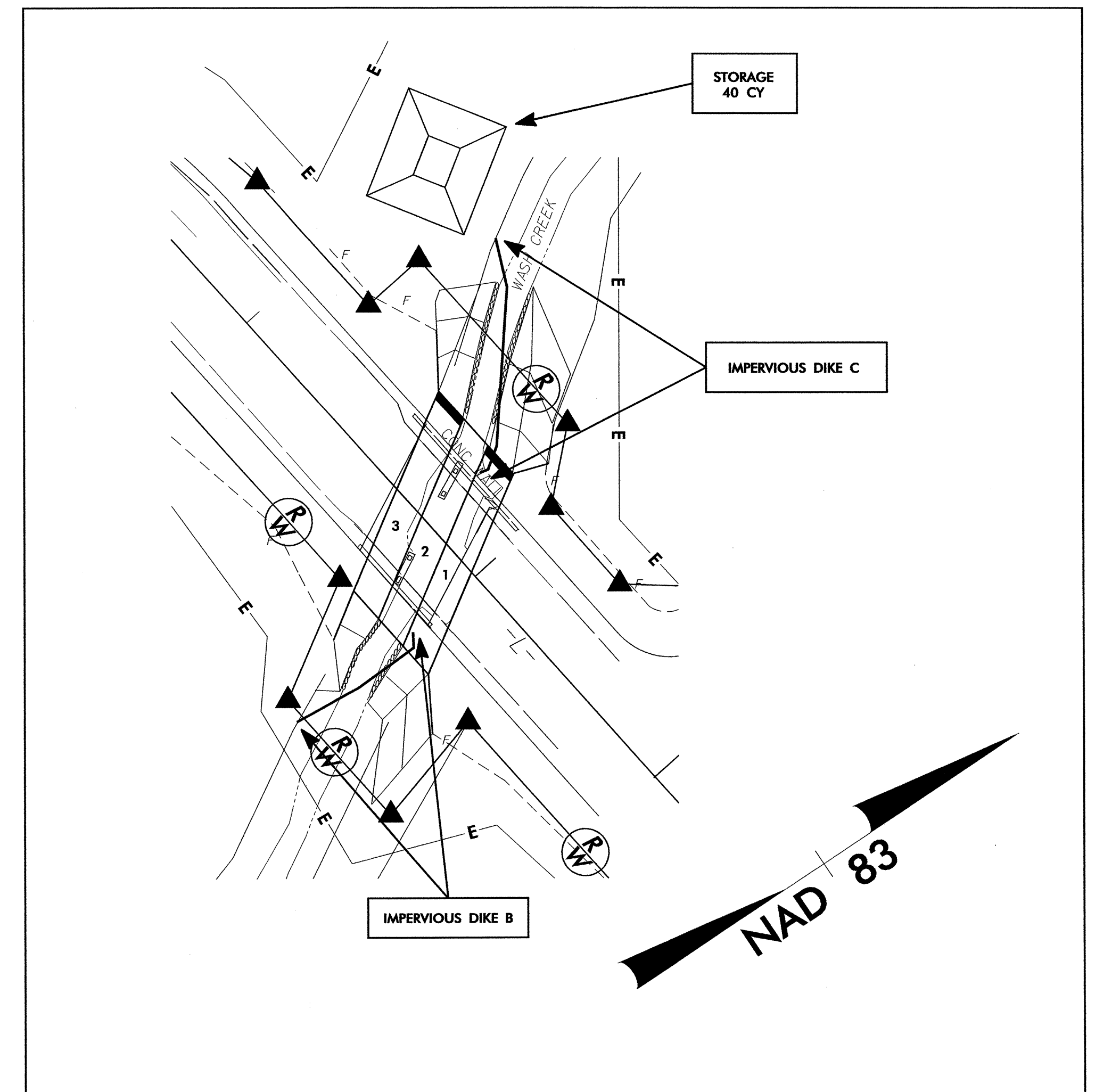
| | |
|---------------------------------|---------------------------|
| PROJECT REFERENCE NO. B-3475 | SHEET NO. EC-4/CONST.4 |
| RW SHEET NO. | |
| ROADWAY DESIGN ENGINEER | HYDRAULICS ENGINEER |

PHASE 1



1. CONSTRUCT STILLING BASIN (40 CY).
2. INSTALL IMPERVIOUS DIKE A.
3. CONSTRUCT BARREL 1.

PHASE 2



4. REMOVE IMPERVIOUS DIKE A AND INSTALL IMPERVIOUS DIKES B AND C.
5. DIVERT WATER THROUGH BARREL 1.
6. CONSTRUCT BARRELS 2 AND 3.
7. COMPLETE ROADWAY.