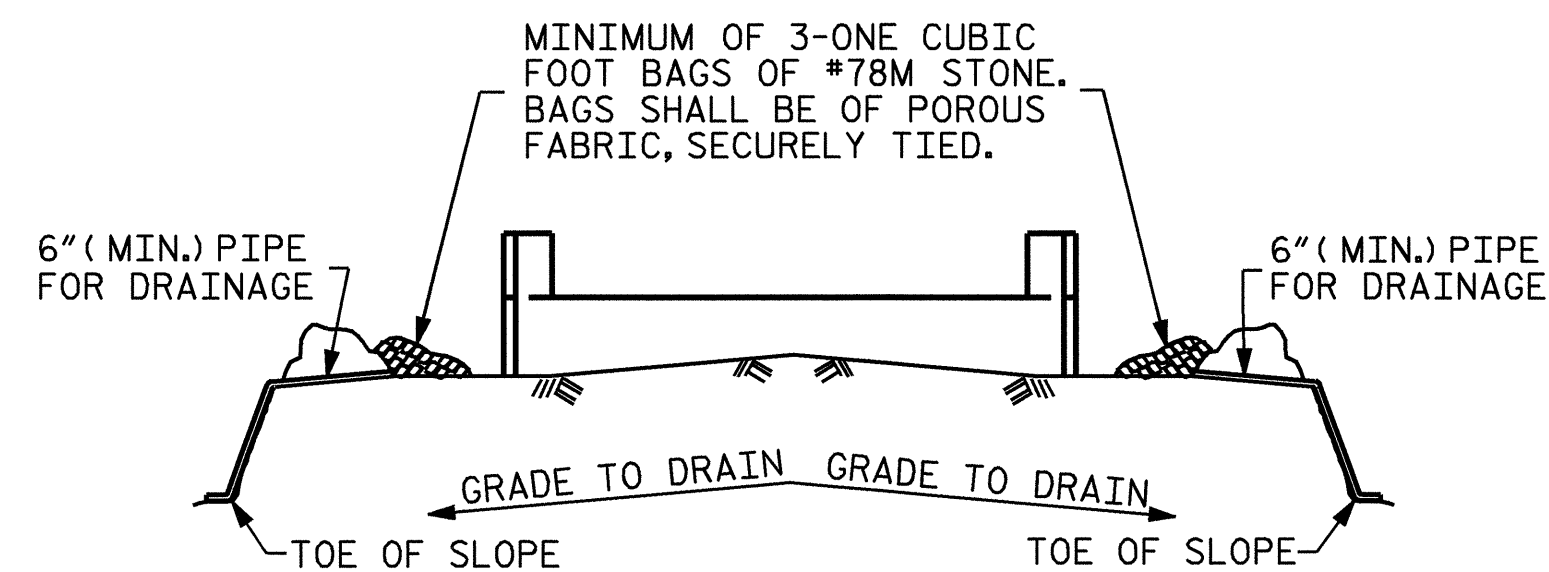


SECTION A-A

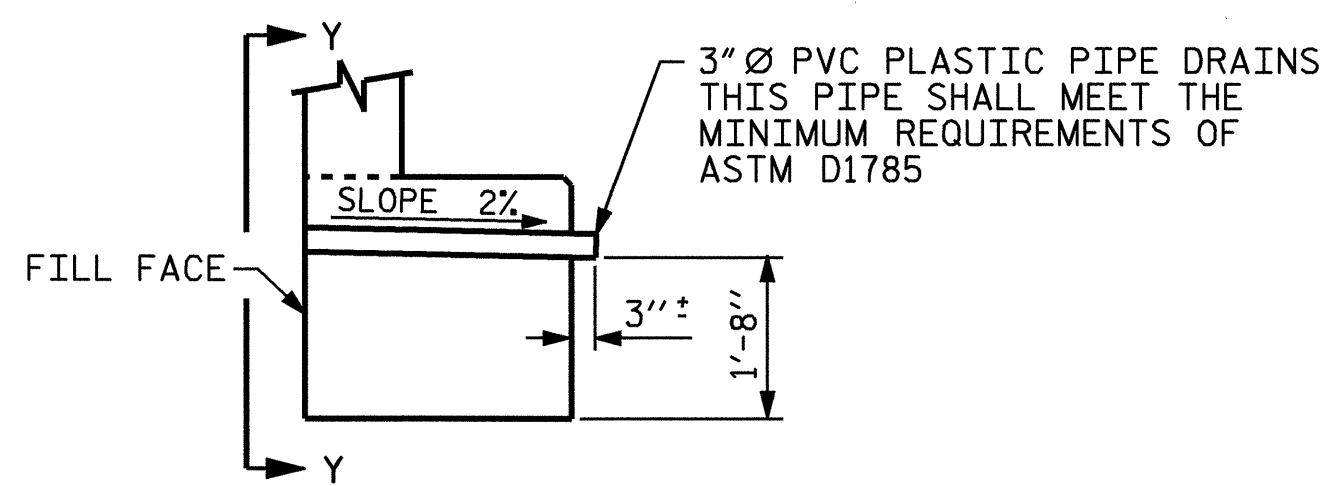


BAGGED STONE AND PIPE SHALL BE PLACED IMMEDIATELY AFTER COMPLETION OF END BENT EXCAVATION. PIPE MAY BE EITHER CONCRETE, CORRUGATED STEEL, CORRUGATED ALUMINUM ALLOY, OR CORRUGATED PLASTIC. PERFORATED PIPE WILL NOT BE ALLOWED.

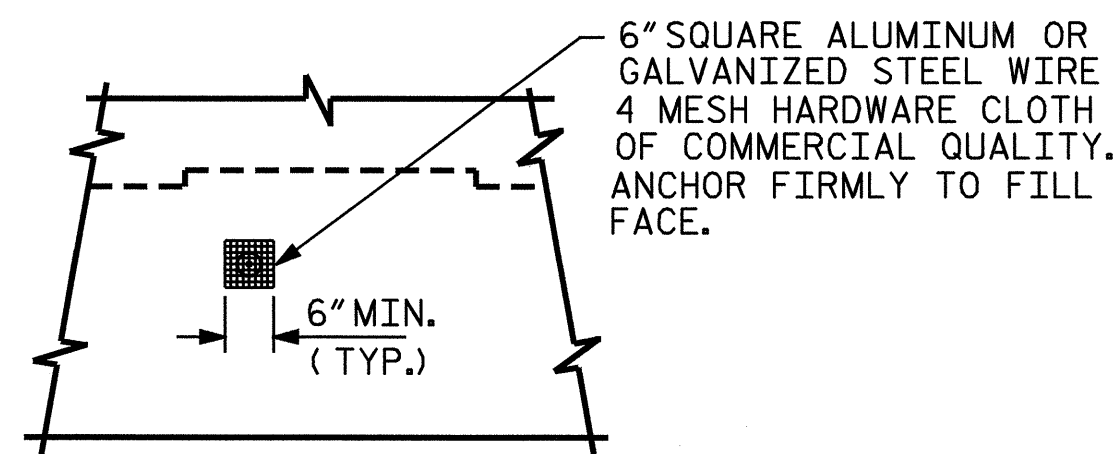
BAGGED STONE SHALL REMAIN IN PLACE UNTIL THE ENGINEER DIRECTS THAT IT BE REMOVED. THE CONTRACTOR SHALL REMOVE AND DISPOSE OF SILT ACCUMULATIONS AT BAGGED STONE WHEN SO DIRECTED BY THE ENGINEER. BAGS SHALL BE REMOVED AND REPLACED WHENEVER THE ENGINEER DETERMINES THAT THEY HAVE DETERIORATED AND LOST THEIR EFFECTIVENESS.

NO SEPARATE PAYMENT WILL BE MADE FOR THIS WORK AND THE ENTIRE COST OF THIS WORK SHALL BE INCLUDED IN THE UNIT CONTRACT PRICE BID FOR THE SEVERAL PAY ITEMS.

**TEMPORARY DRAINAGE AT END BENT**



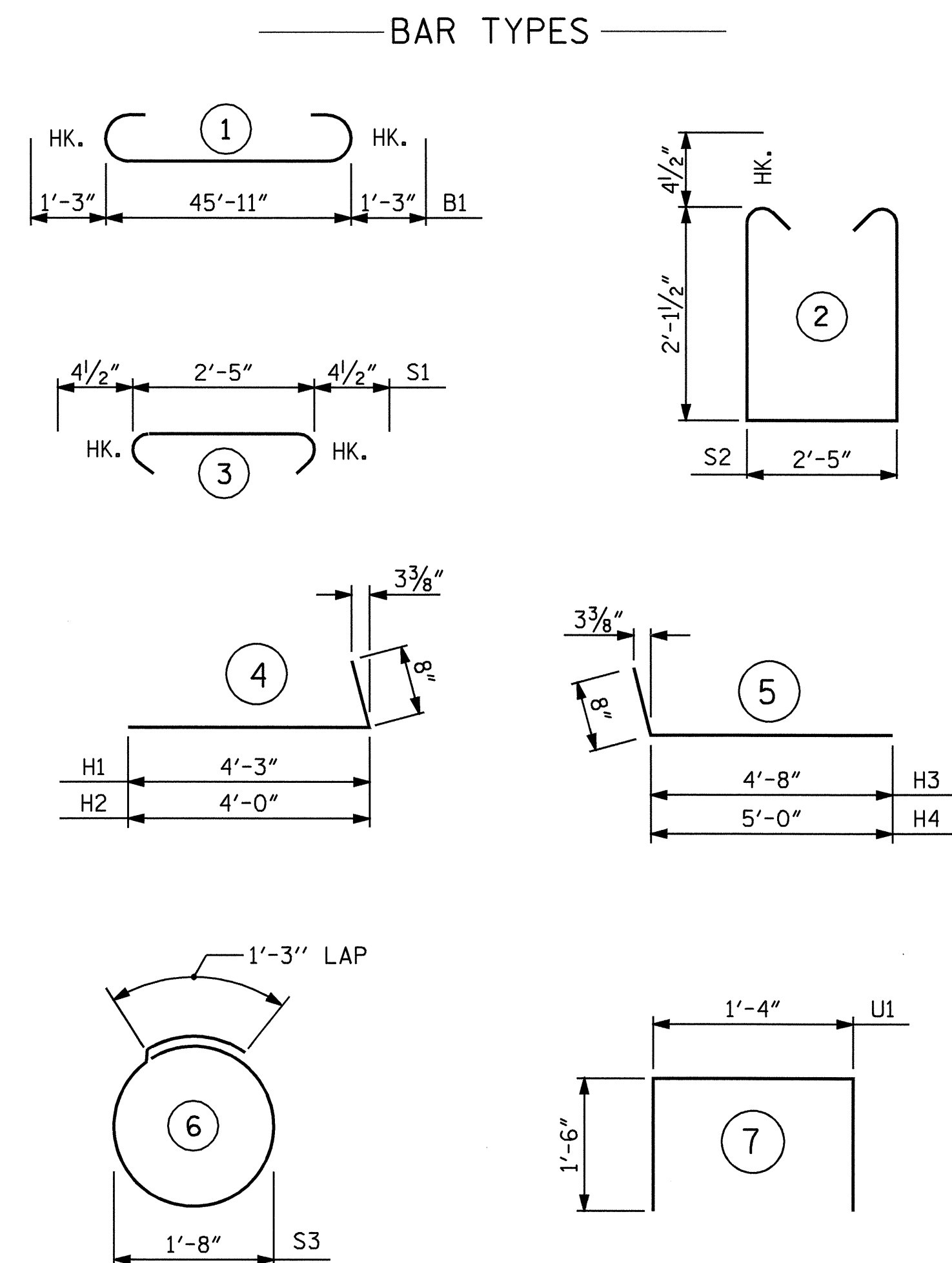
SECTION THRU CAP



VIEW Y-Y

NOTE: NO SEPARATE PAYMENT WILL BE MADE FOR FURNISHING AND INSTALLING THE PVC PLASTIC PIPE DRAINS, HARDWARE CLOTH AND FASTENERS. THE ENTIRE COST OF THIS WORK SHALL BE INCLUDED IN THE UNIT CONTRACT PRICE BID FOR THE SEVERAL PAY ITEMS.

**PIPE DRAIN DETAILS**



ALL BAR DIMENSIONS ARE OUT TO OUT.

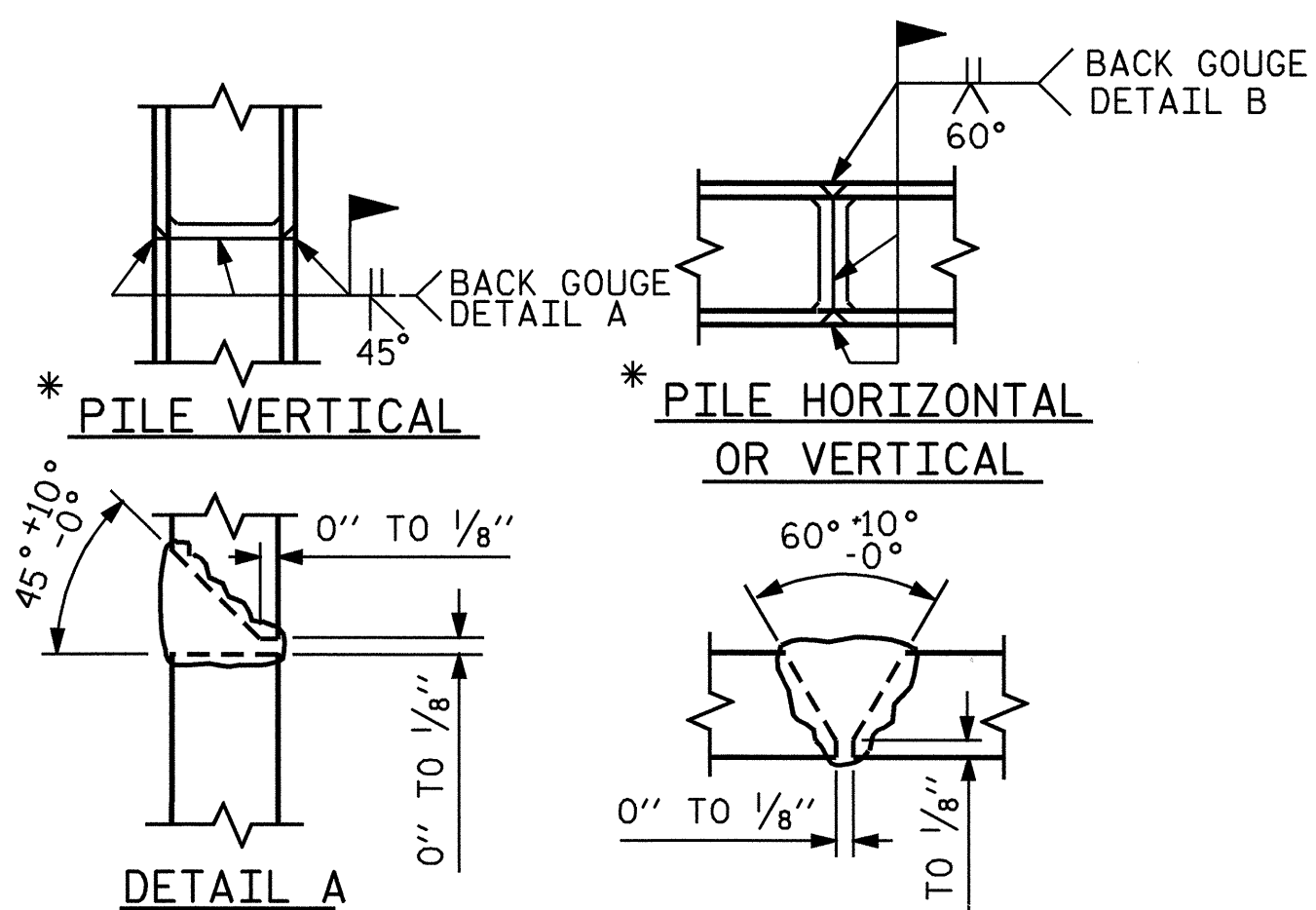
**BILL OF MATERIAL**

BAR	NO.	SIZE	TYPE	LENGTH	WEIGHT
B1	8	9	1	48'-5"	1317
B2	8	4	STR	24'-3"	130
B3	2	5	STR	46'-0"	96
B4	11	4	STR	2'-5"	18
D1	24	6	STR	1'-6"	54
H1	5	4	4	4'-11"	16
H2	5	4	4	4'-8"	16
H3	5	4	5	5'-4"	18
H4	5	4	5	5'-8"	19
K1	8	4	STR	2'-9"	15
S1	42	4	3	3'-2"	89
S2	42	4	2	7'-5"	208
S3	12	4	6	6'-6"	52
U1	4	4	7	4'-4"	12
V1	18	4	STR	4'-0"	48
V2	18	4	STR	3'-11"	47
REINFORCING STEEL (LBS)					2155

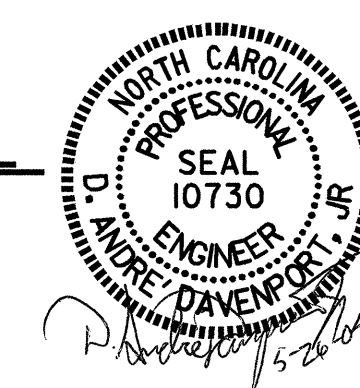
**CLASS A CONCRETE (CU. YDS.)**

POUR #1	CAP & LOWER PART OF WINGS	12.6
POUR #2	UPPER PART OF WINGS	1.0
POUR #3	LATERAL GUIDES	0.1
TOTAL		13.7

HP 12 X 53 STEEL PILES NO. 6 (LIN. FT.)	540
---	-----



**PILE SPLICE DETAILS**



PROJECT NO. B-4134  
 HALIFAX COUNTY  
 STATION: 14+23.00-L-

SHEET 3 OF 3

STATE OF NORTH CAROLINA  
 DEPARTMENT OF TRANSPORTATION  
 RALEIGH

**SUBSTRUCTURE END BENT #2**

REVISIONS					SHEET NO.
NO.	BY:	DATE:	NO.	BY:	DATE:
1			3		
2			4		

DRAWN BY : M. G. SHAIKH DATE : 4/26/04  
 CHECKED BY : G. M. PATTERSON DATE : 4/28/04