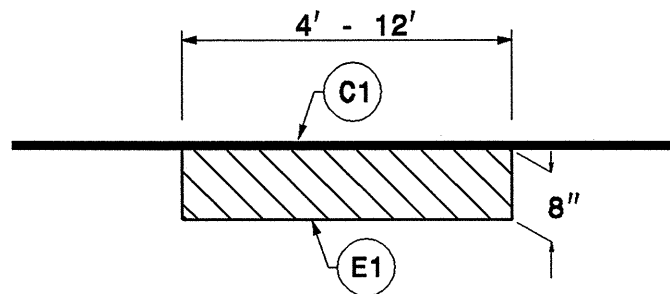


STATE	PROJECT NO.	SHEET NO.	TOTAL SHEETS
N.C.	7CR.10411.7, 7CR.20411.7, ETC.	9	11

7CR.10411.7,
7CR.20411.7
7CR.304107.7
7CR.304110.7

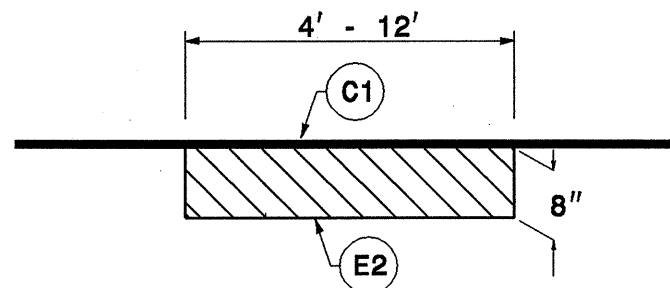
PATCHING TYPICAL 1



DIG OUT ASPHALT PAVEMENT 8" IN DEPTH,
AT LOCATIONS AS DIRECTED BY THE ENGINEER.

NOTE:
TO BE USED IN CONJUNCTION WITH
TS. NO. 1, 2 ON MAP 1, 2
TS. NO. 4 ON MAP 6
TS. NO. 1, 6, 7 ON MAP 8 & 9
TS. NO. 9, 10, 11, 15 ON MAP 11
TS. NO. 4, 5, 12, 13 ON MAP 13 & 14

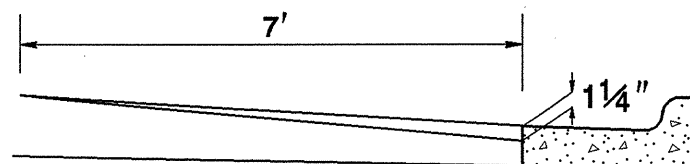
PATCHING TYPICAL 2



DIG OUT ASPHALT PAVEMENT 8" IN DEPTH,
AT LOCATIONS AS DIRECTED BY THE ENGINEER.

NOTE:
TO BE USED IN CONJUNCTION WITH
TS. NO. 8 ON MAP 10

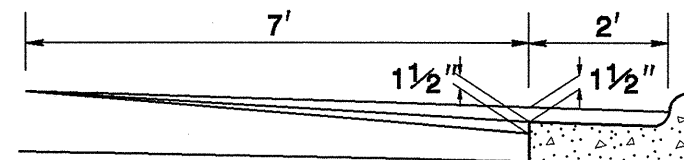
MILLING DETAIL 1



MILL EXISTING ASPHALT PAVEMENT 0"-1 1/4" AT
LOCATIONS AS DIRECTED BY THE ENGINEER

NOTE:
TO BE USED IN CONJUNCTION WITH
TS. NO. 12, 13 ON MAP 13, 14
TS. NO. 12, 14 ON MAP 15

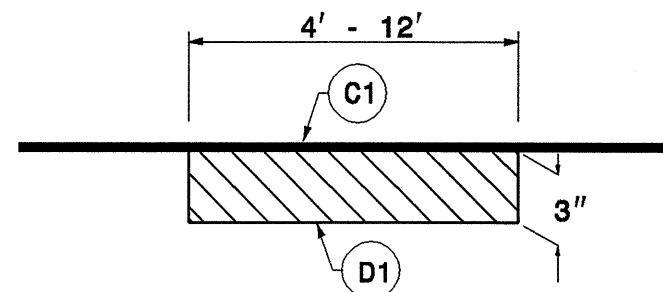
MILLING DETAIL 2



MILL EXISTING ASPHALT PAVEMENT 0"-3" AT
LOCATIONS AS DIRECTED BY THE ENGINEER

NOTE:
TO BE USED IN CONJUNCTION WITH
TS. NO. 8 ON MAP 10

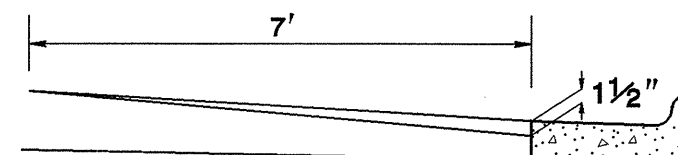
MILLING DETAIL 3



MILL EXISTING ASPHALT PAVEMENT 3" IN DEPTH,
AT LOCATIONS AS DIRECTED BY THE ENGINEER.

NOTE:
TO BE USED IN CONJUNCTION WITH
TS. NO. 4 ON MAP 6
TS. NO. 1, 6, 7 ON MAP 8 & 9
TS. NO. 9, 10, 11, 15 ON MAP 11
TS. NO. 3 ON MAP 12
TS. NO. 4, 5, 12, 13 ON MAP 13 & 14

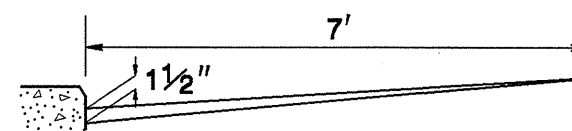
MILLING DETAIL 4



MILL EXISTING ASPHALT PAVEMENT 0"-1 1/2" AT
LOCATIONS AS DIRECTED BY THE ENGINEER

NOTE:
TO BE USED IN CONJUNCTION WITH
TS. NO. 10, 11 ON MAP 11

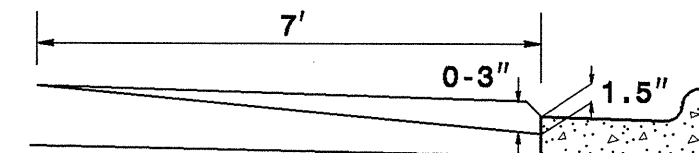
MILLING DETAIL 5



MILL EXISTING ASPHALT PAVEMENT 0-1 1/2" AT
LOCATIONS AS DIRECTED BY THE ENGINEER

NOTE:
TO BE USED IN CONJUNCTION WITH
TS. NO. 2 ON MAP 1
TS. NO. 2 ON MAP 2

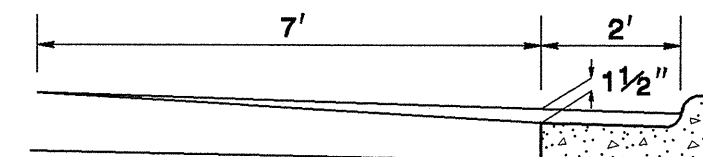
MILLING DETAIL 6



MILL EXISTING ASPHALT PAVEMENT 0-3" AT
LOCATIONS AS DIRECTED BY THE ENGINEER

NOTE:
TO BE USED IN CONJUNCTION WITH
TS. NO. 8 ON MAP 10

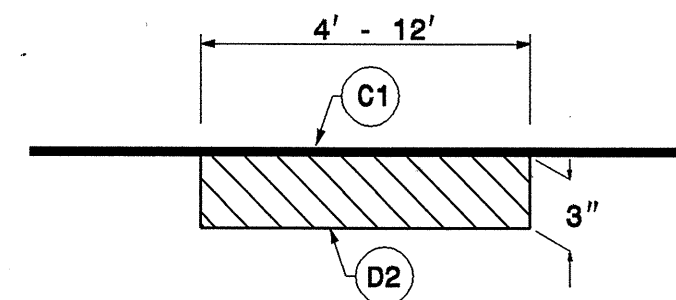
MILLING DETAIL 7



MILL EXISTING ASPHALT PAVEMENT 0"-1 1/2" AT
LOCATIONS AS DIRECTED BY THE ENGINEER

NOTE:
TO BE USED IN CONJUNCTION WITH
TS. NO. 6, 7 ON MAP 8 & 9

MILLING DETAIL 8



MILL EXISTING ASPHALT PAVEMENT 3" IN DEPTH,
AT LOCATIONS AS DIRECTED BY THE ENGINEER.

NOTE:
TO BE USED IN CONJUNCTION WITH
TS. NO. 8 ON MAP 10