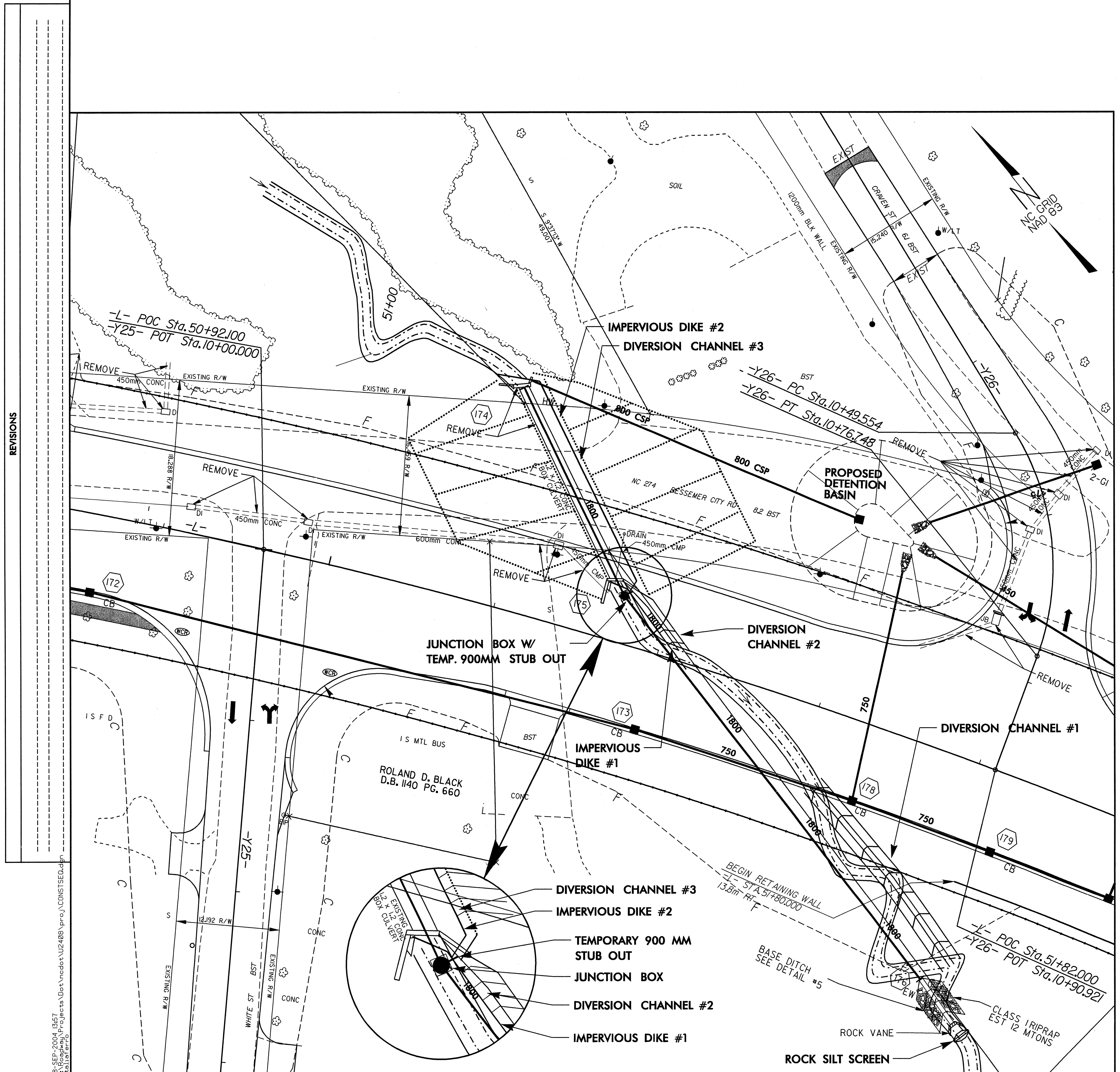
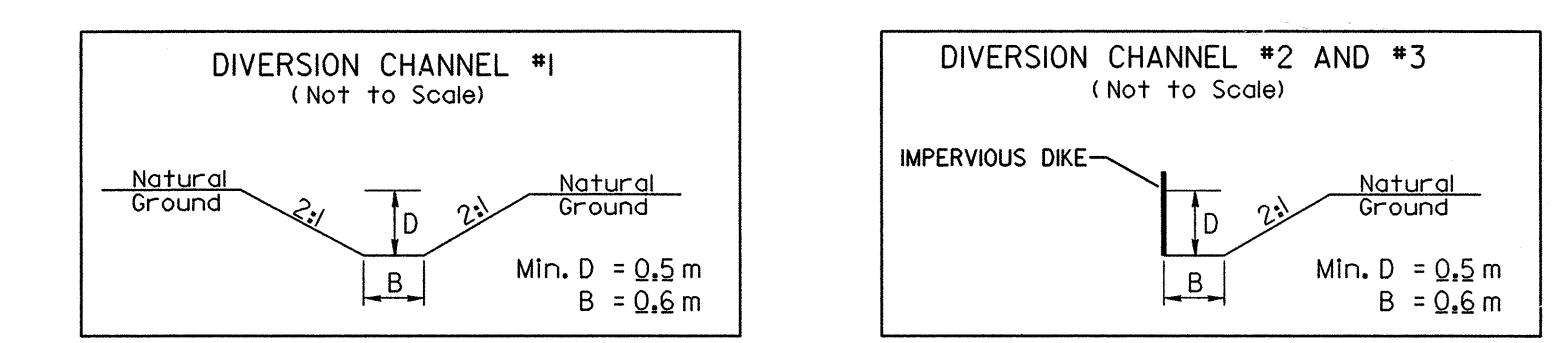


CONSTRUCTION SEQUENCE FOR 1 @ 1800mm RCP

1. INSTALL ROCK SILT SCREEN.
2. INSTALL IMPERVIOUS DIKE #1 AND TEMPORARY DIVERSION CHANNELS #1 AND #2.
3. INSTALL JUNCTION BOX WITH TEMPORARY 900 MM STUB OUT AND INSTALL PROPOSED 1800 MM RCP TO THE OUTLET.
4. CONSTRUCT OUTLET CHANNEL AND ROCK VANE.
5. REMOVE IMPERVIOUS DIKE #1 AND DIVERT WATER THROUGH 900 MM STUB OUT AND INSTALLED PORTION OF PIPE.
6. CONSTRUCT TEMPORARY ALIGNMENT UTILIZING TEMPORARY BARRIERS, SHORING AND TEMPORARY 1.5:1 SLOPES. DIVERT TRAFFIC TO TEMPORARY ALIGNMENT.
7. EXCAVATE AND INSTALL IMPERVIOUS DIKE #2 AND TEMPORARY DIVERSION CHANNEL #3 AND DIVERT FLOW TO 900 MM STUB OUT.
8. REMOVE EXISTING BOX CULVERT.
9. COMPLETE INSTALLATION OF PIPE.
10. REMOVE IMPERVIOUS DIKE #3 AND DIVERT FLOW THROUGH COMPLETED CULVERT.
11. GROUT TEMPORARY STUB OUT FULL.
12. COMPLETE ROAD CONSTRUCTION.
13. AFTER AREA HAS BEEN STABILIZED, REMOVE ROCK SILT SCREEN.



REVISIONS
 06-SEP-2014 10:57
 U:\Projects\U2408\Projects\Drawings\CONSTRUCTION.dwg
 S:\Projects\U2408\Projects\Drawings\CONSTRUCTION.dwg