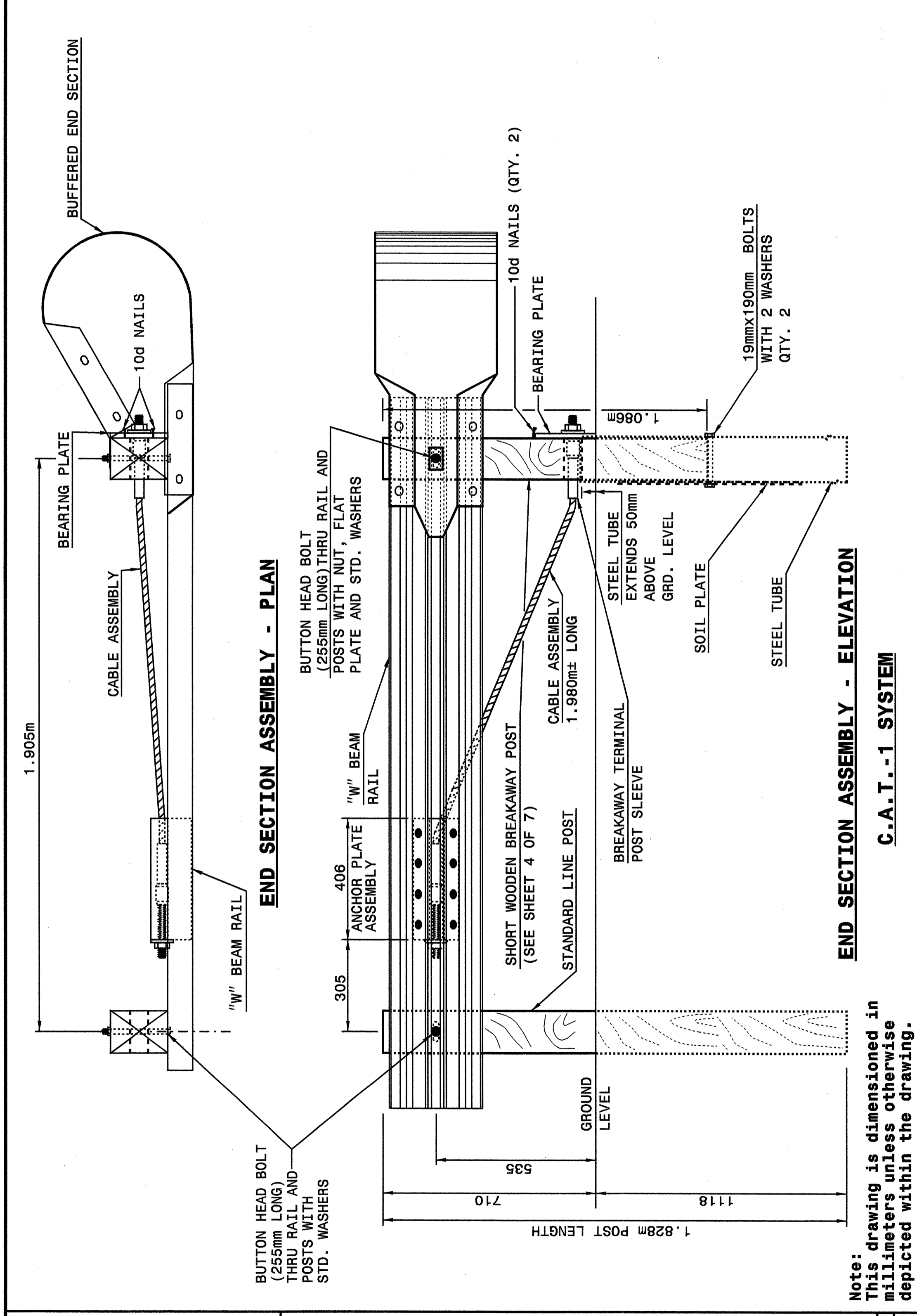




STATE OF NORTH CAROLINA
DEPT. OF TRANSPORTATION
RALEIGH, N.C.

METRIC DETAIL DRAWING FOR
GUARDRAIL INSTALLATION

SHEET 1 OF 7
862D02



Note:
This drawing is dimensioned in millimeters unless otherwise depicted within the drawing.

END SECTION ASSEMBLY - ELEVATION
C.A.T.-1 SYSTEM

STATE OF NORTH CAROLINA
DEPT. OF TRANSPORTATION
DIVISION OF HIGHWAYS
RALEIGH, N.C.

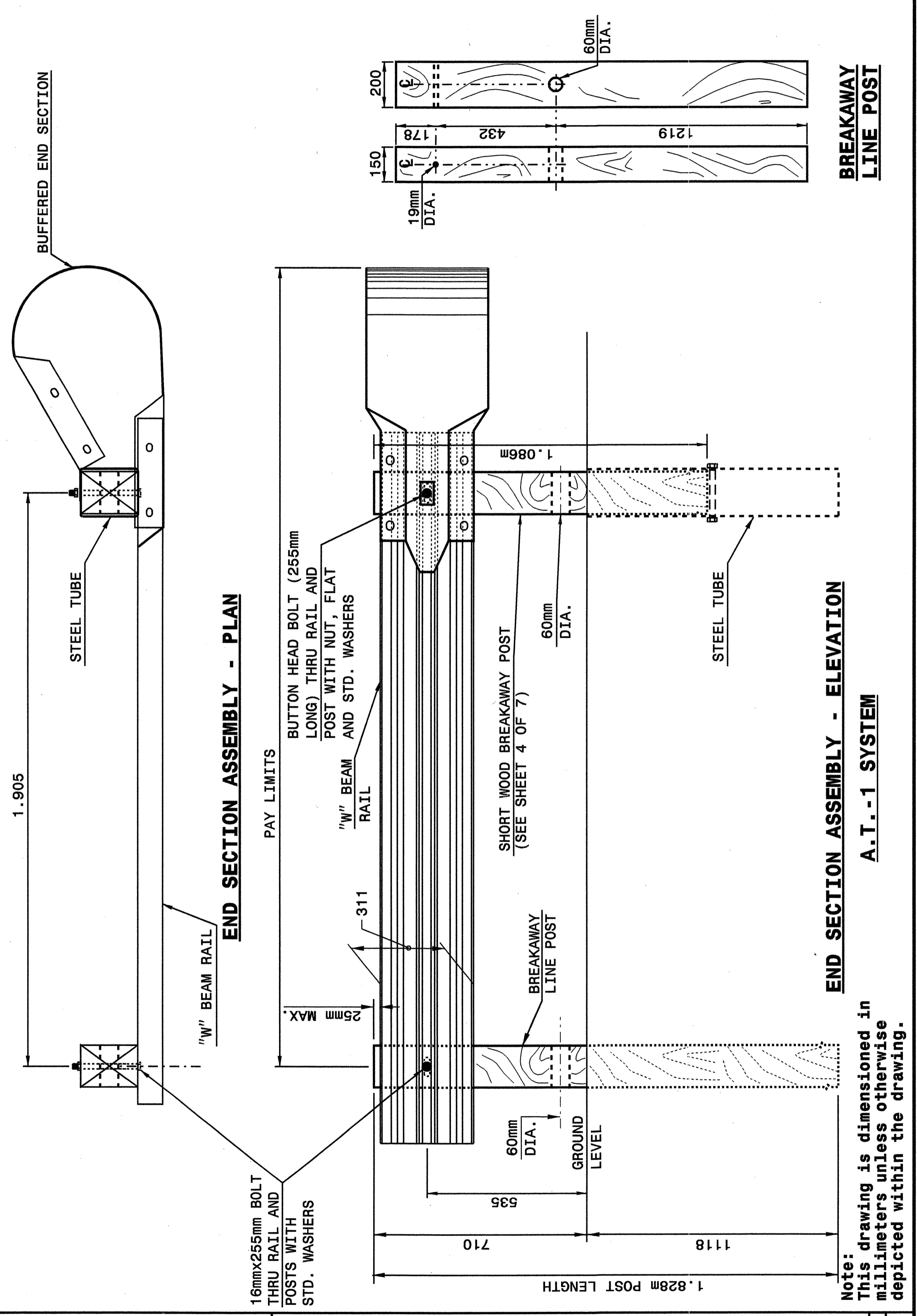
METRIC DETAIL DRAWING FOR
GUARDRAIL INSTALLATION

SHEET 1 OF 7
862D02

STATE OF NORTH CAROLINA
DEPT. OF TRANSPORTATION
RALEIGH, N.C.

METRIC DETAIL DRAWING FOR
GUARDRAIL INSTALLATION

SHEET 2 OF 7
862D02



Note:
This drawing is dimensioned in millimeters unless otherwise depicted within the drawing.

END SECTION ASSEMBLY - ELEVATION
A.T.-1 SYSTEM

STATE OF NORTH CAROLINA
DEPT. OF TRANSPORTATION
DIVISION OF HIGHWAYS
RALEIGH, N.C.

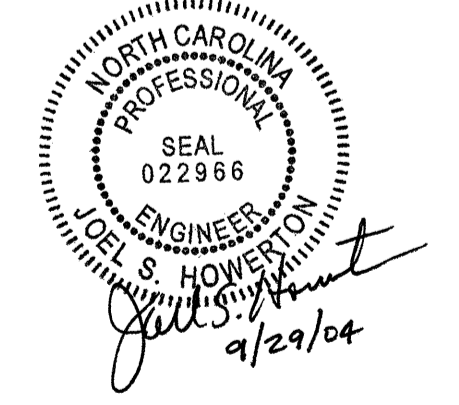
METRIC DETAIL DRAWING FOR
GUARDRAIL INSTALLATION

SHEET 2 OF 7
862D02

DESIGN SERVICES UNIT
STANDARDS AND SPECIAL DESIGN
Office 919-250-4128 FAX 919-250-4119

SEE PLATE FOR TITLE

ORIGINAL BY: 2002 STD.862.02 DATE: 02-09-03
MODIFIED BY: E.E. WARD DATE: 5-03
CHECKED BY: [Signature] DATE: 5-03
FILE SPEC.: /usr/stds/02tode/all/metric/86202/862d02m.dgn



22-MAY-2003 10:57 AM C:\Program Files\Autodesk\AutoCAD 2002\Std to Special Details\metric\862d02\862d02m.dgn
Metric Detail Drawing
E.E. Ward