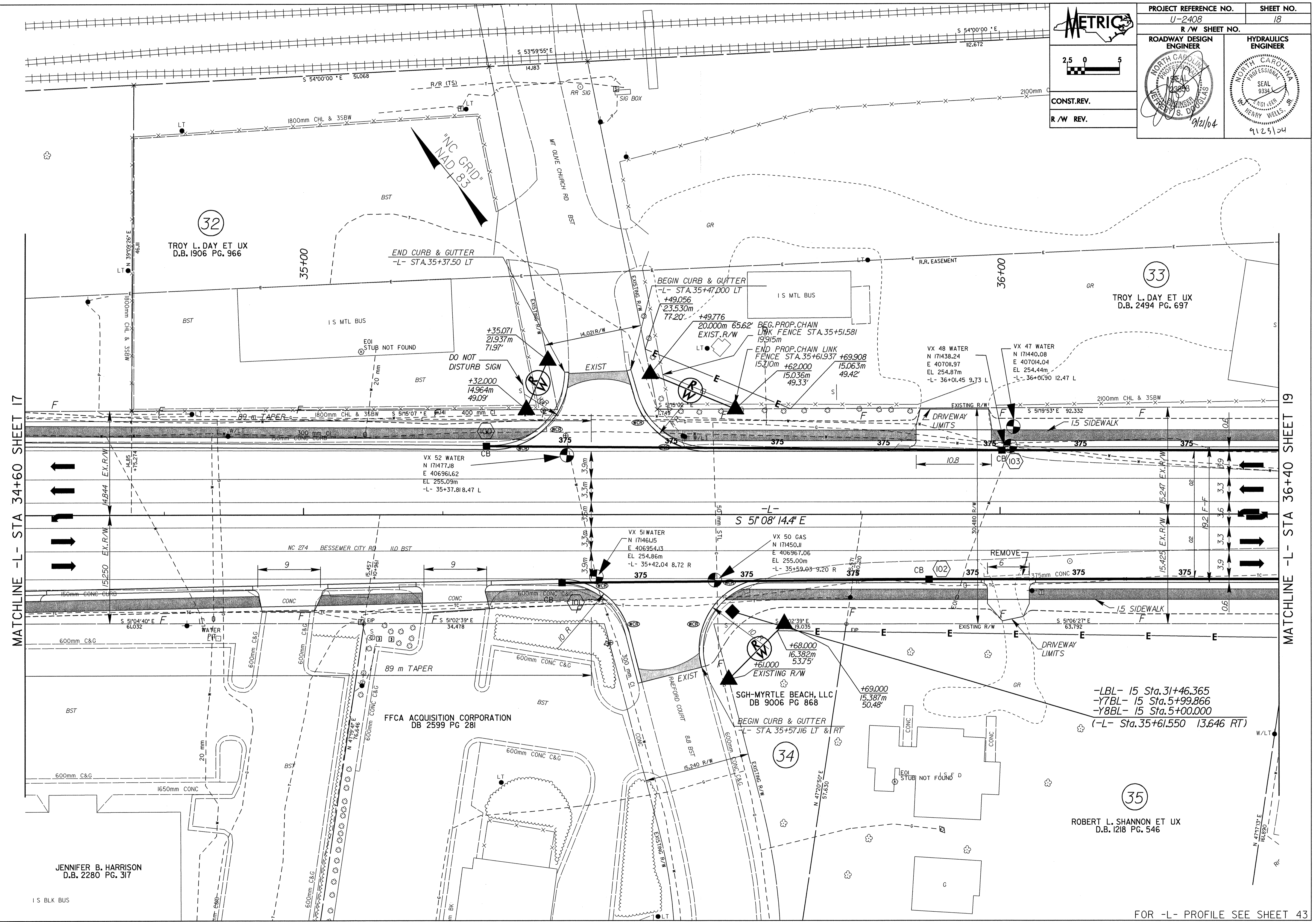


METRIC

CONST. REV.
R/W REV.

PROJECT REFERENCE NO. U-2408	SHEET NO. 18
R/W SHEET NO.	
ROADWAY DESIGN ENGINEER TROY L. DAY ET UX D.B. 1906 PG. 966	HYDRAULICS ENGINEER HENRY WELLS D.B. 9334
9/2/04	9/23/04



REVISIONS

MATCHLINE -L- STA 34+60 SHEET 17

MATCHLINE -L- STA 36+40 SHEET 19

-LBL- 15 Sta. 31+46.365
-Y7BL- 15 Sta. 5+99.866
-Y8BL- 15 Sta. 5+00.000
(-L- Sta. 35+61.550 13.646 RT)

22-SEP-2004 16:36
C:\Roadway\Projects\U2408\pcc\U2408a16.pch
J. Harrison

FOR -L- PROFILE SEE SHEET 43