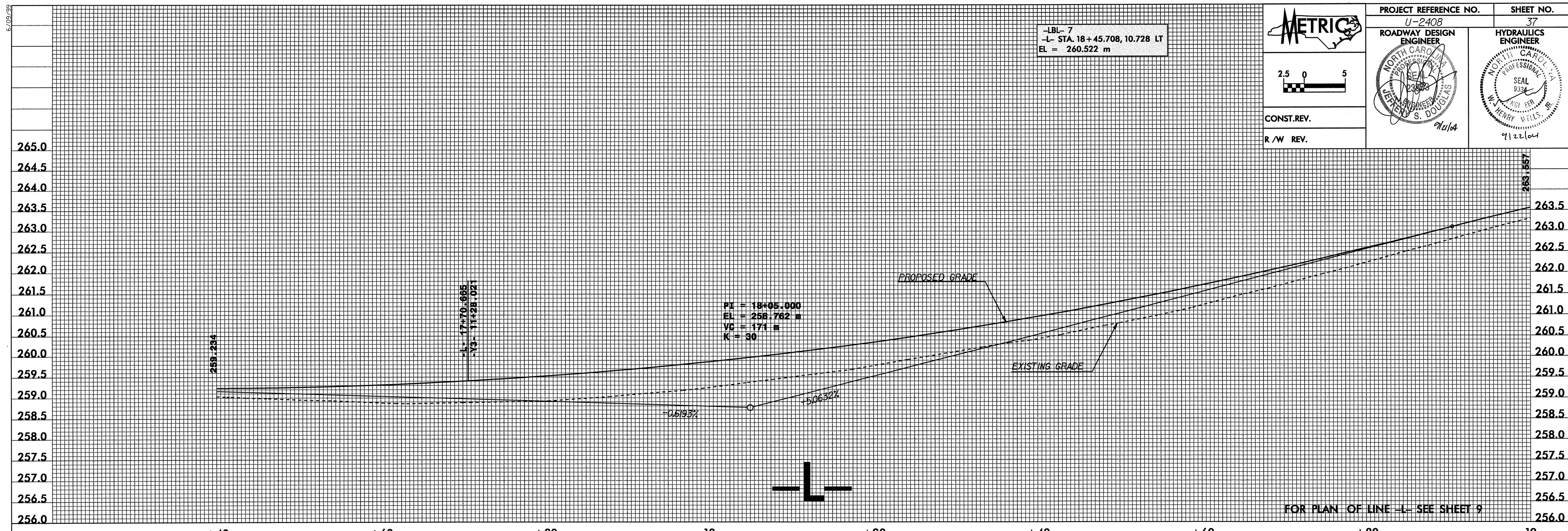


08-SEP-2004 08:58  
 J:\Roadway\Projects\U2408\proj\U2408.pf1  
 vta11eferro



-LBL- 7  
 -L- STA. 18+45.708, 10.728 LT  
 EL = 260.522 m

METRIC

2.5 0 5

CONST.REV.

R/W REV.

PROJECT REFERENCE NO. U-2408

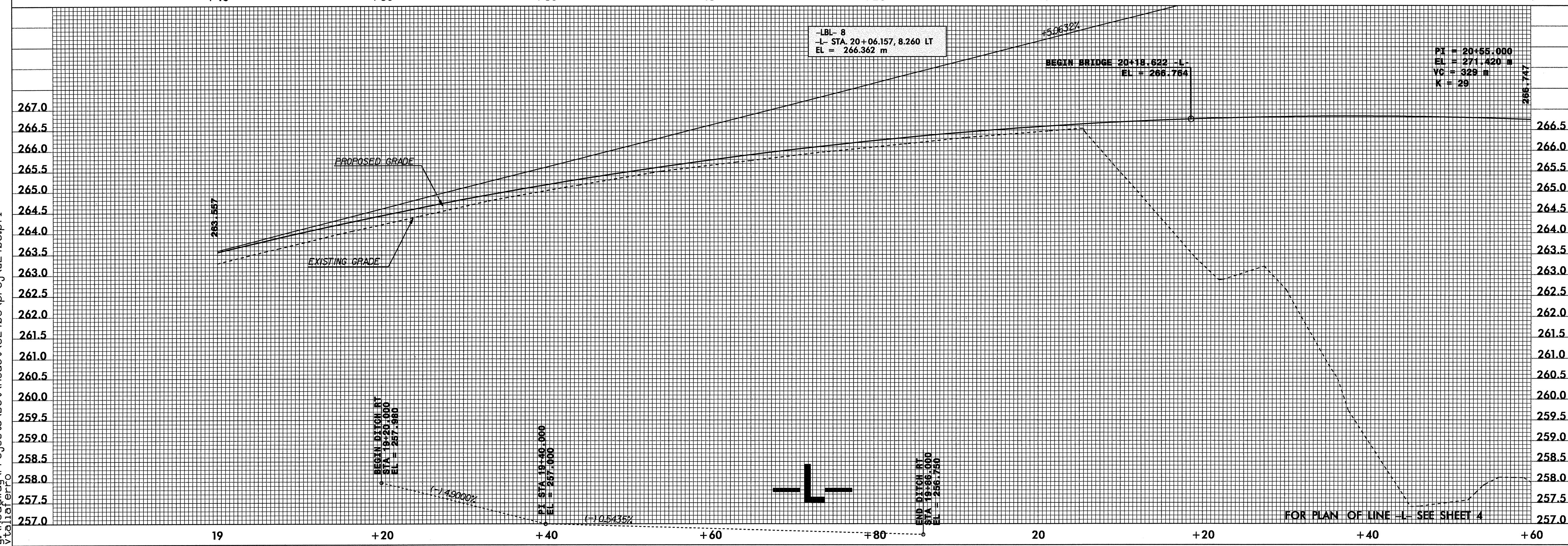
SHEET NO. 37

ROADWAY DESIGN ENGINEER

HYDRAULICS ENGINEER

SEAL

9/22/04



-LBL- 8  
 -L- STA. 20+06.157, 8.260 LT  
 EL = 266.362 m