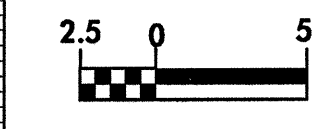
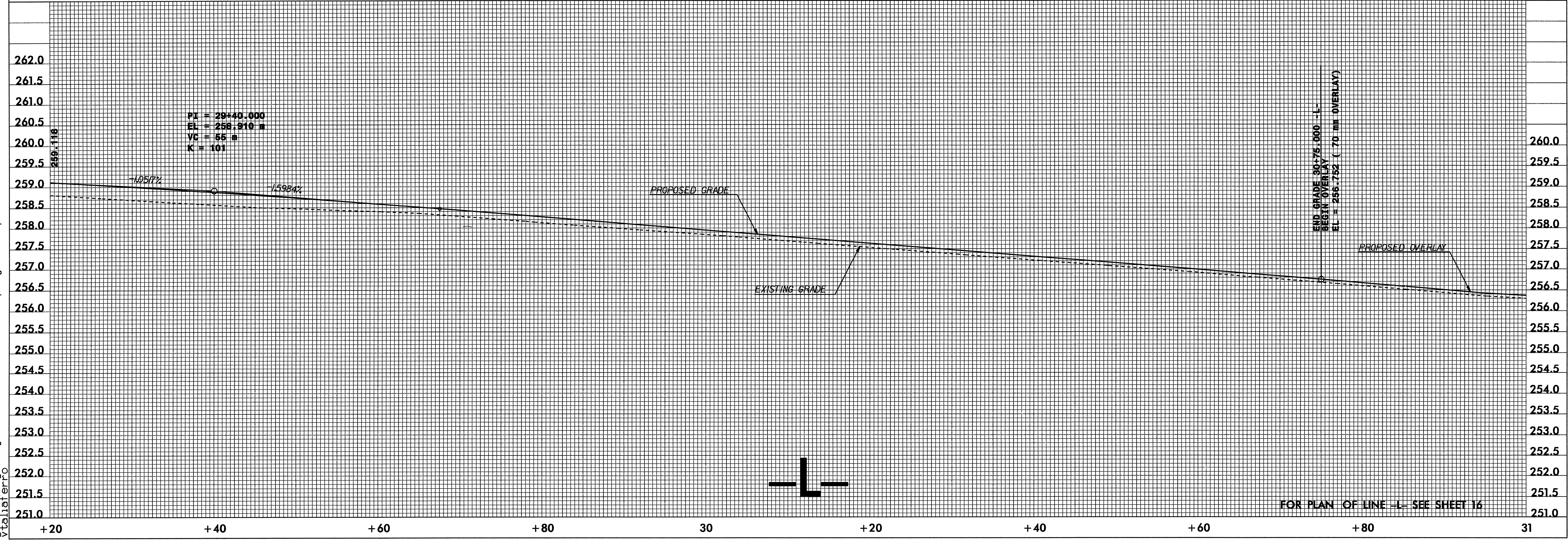
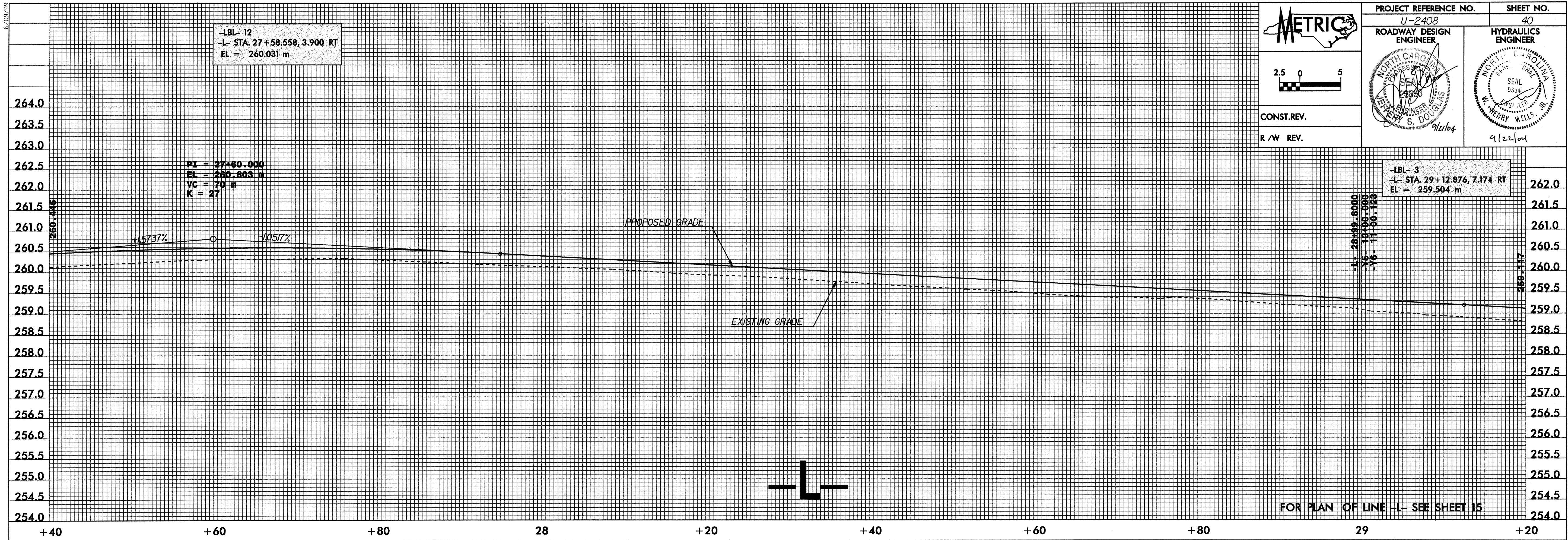


PROJECT REFERENCE NO. U-2408	SHEET NO. 40
ROADWAY DESIGN ENGINEER HENRY S. DOUGLAS	HYDRAULICS ENGINEER HENRY WELLS
CONST. REV.	
R/W REV.	



-LBL- 3
-L- STA. 29+12.876, 7.174 RT
EL = 259.504 m



08-SEP-2004 08:58
U:\Roadway\Projects\Dot\ncdot\U2408\proj\w2408.pfl
vta\fero