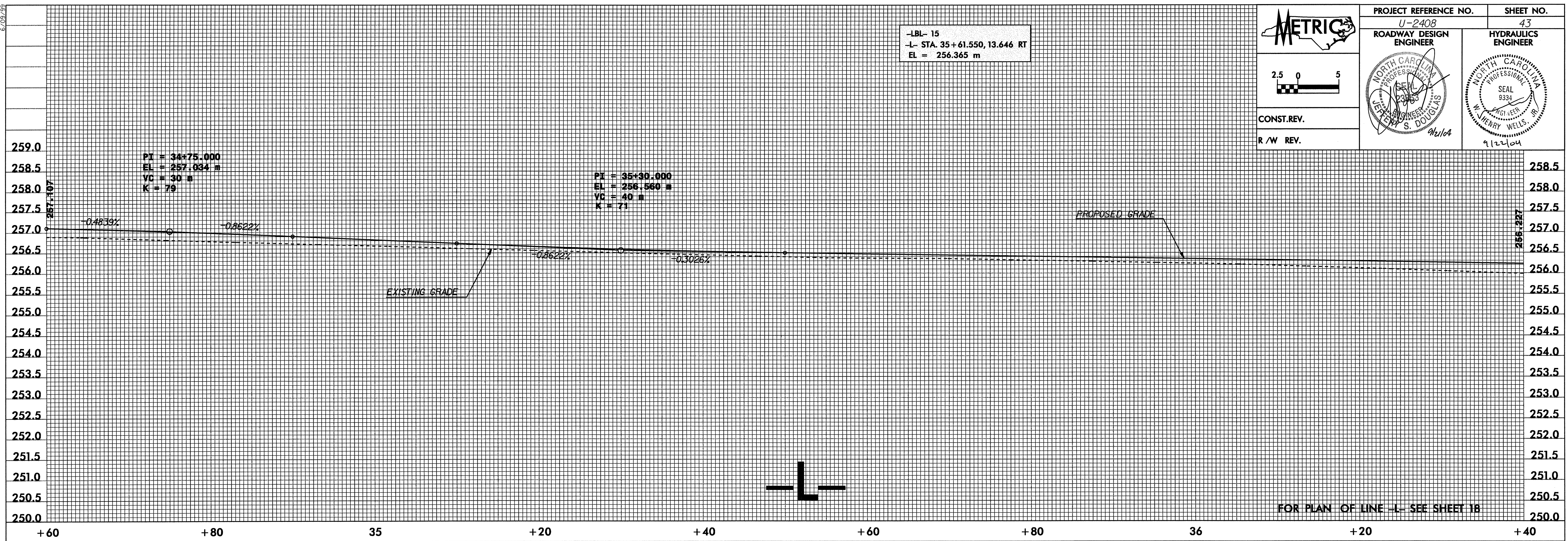
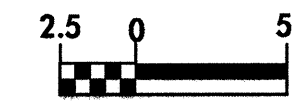


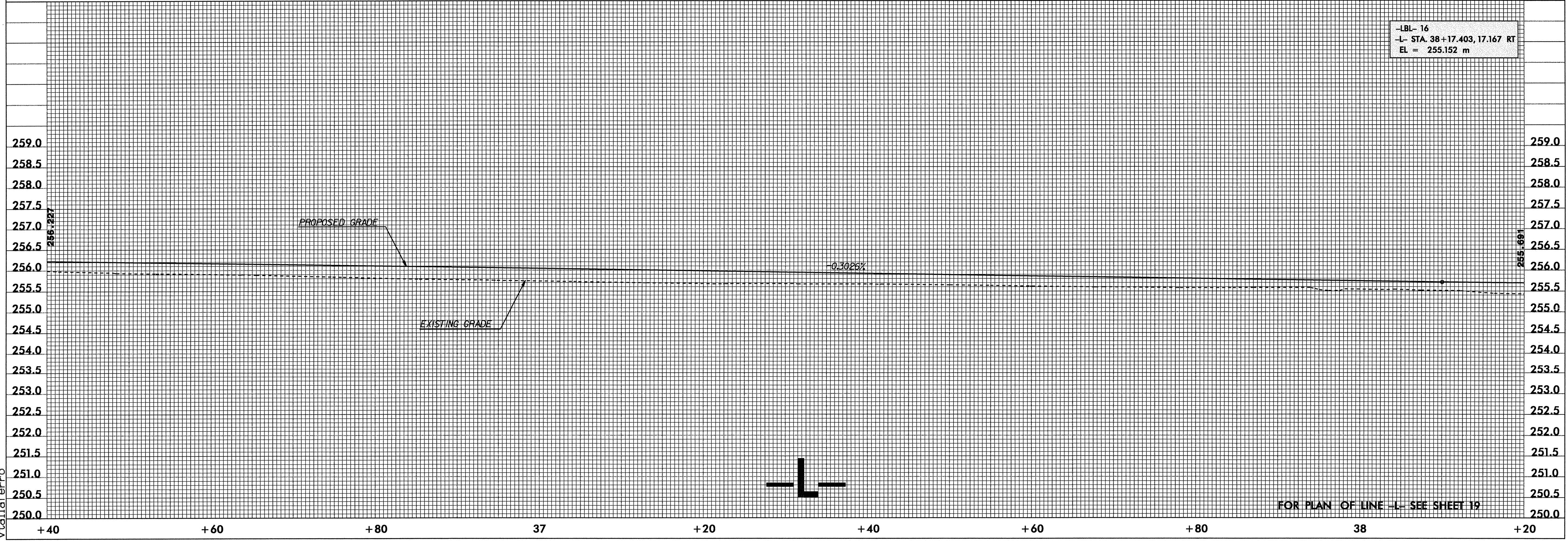


PROJECT REFERENCE NO. U-2408	SHEET NO. 43
ROADWAY DESIGN ENGINEER	HYDRAULICS ENGINEER
CONST.REV.	
R/W REV.	

-LBL- 15  
-L- STA. 35+61.550, 13.646 RT  
EL = 256.365 m



-LBL- 16  
-L- STA. 38+17.403, 17.167 RT  
EL = 255.152 m



I:\Roadway\Projects\Dot\ncdot\U2408\proj\U2408.pfl  
7-SEP-2004 09:23  
vtalial@rrr