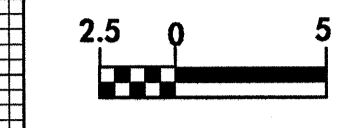




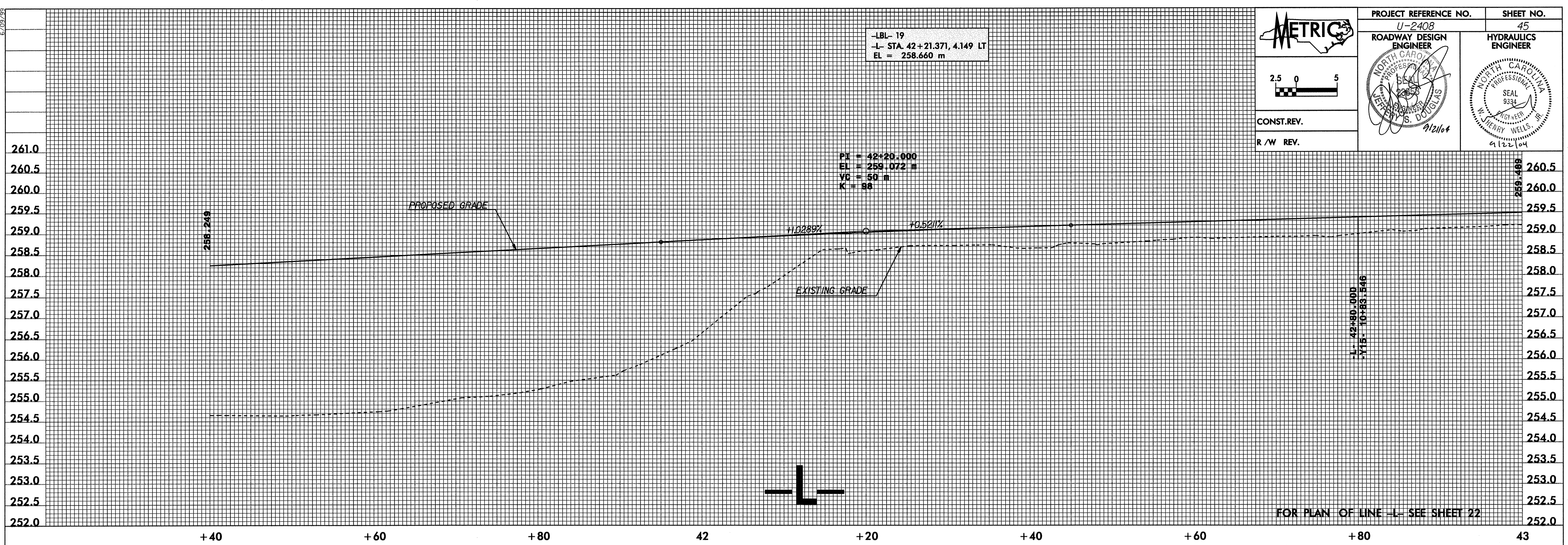
PROJECT REFERENCE NO. U-2408	SHEET NO. 45
ROADWAY DESIGN ENGINEER W. HENRY WELLS	HYDRAULICS ENGINEER W. HENRY WELLS



CONST. REV.  
R / W REV.

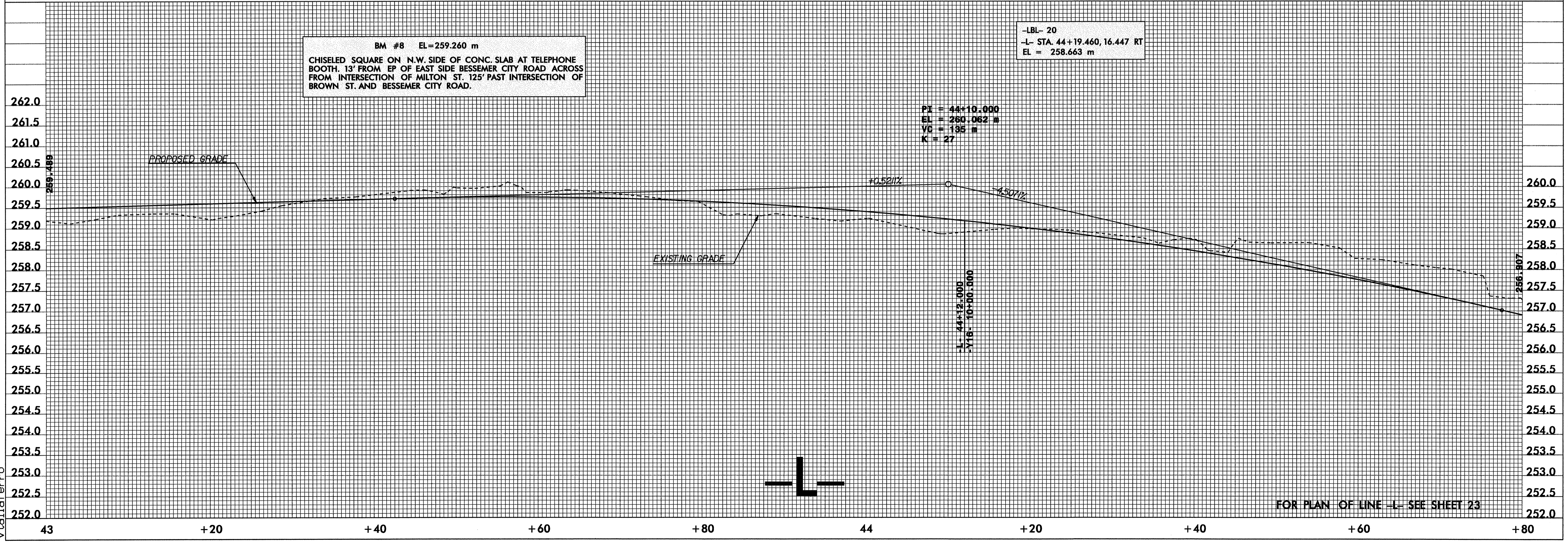
-LBL- 19  
-L- STA. 42+21.371, 4.149 LT  
EL = 258.660 m

PI = 42+20.000  
EL = 259.072 m  
VC = 50 m  
K = 98



-LBL- 20  
-L- STA. 44+19.460, 16.447 RT  
EL = 258.663 m

PI = 44+10.000  
EL = 260.062 m  
VC = 135 m  
K = 27



08-SEP-2004 08:59  
 y:\Roadway\Projects\U2408\proj\U2408.pf1  
 v:\taferro