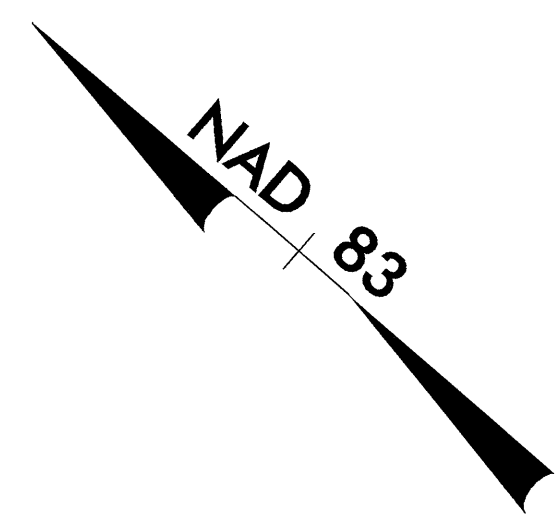


UTILITIES BY OTHERS

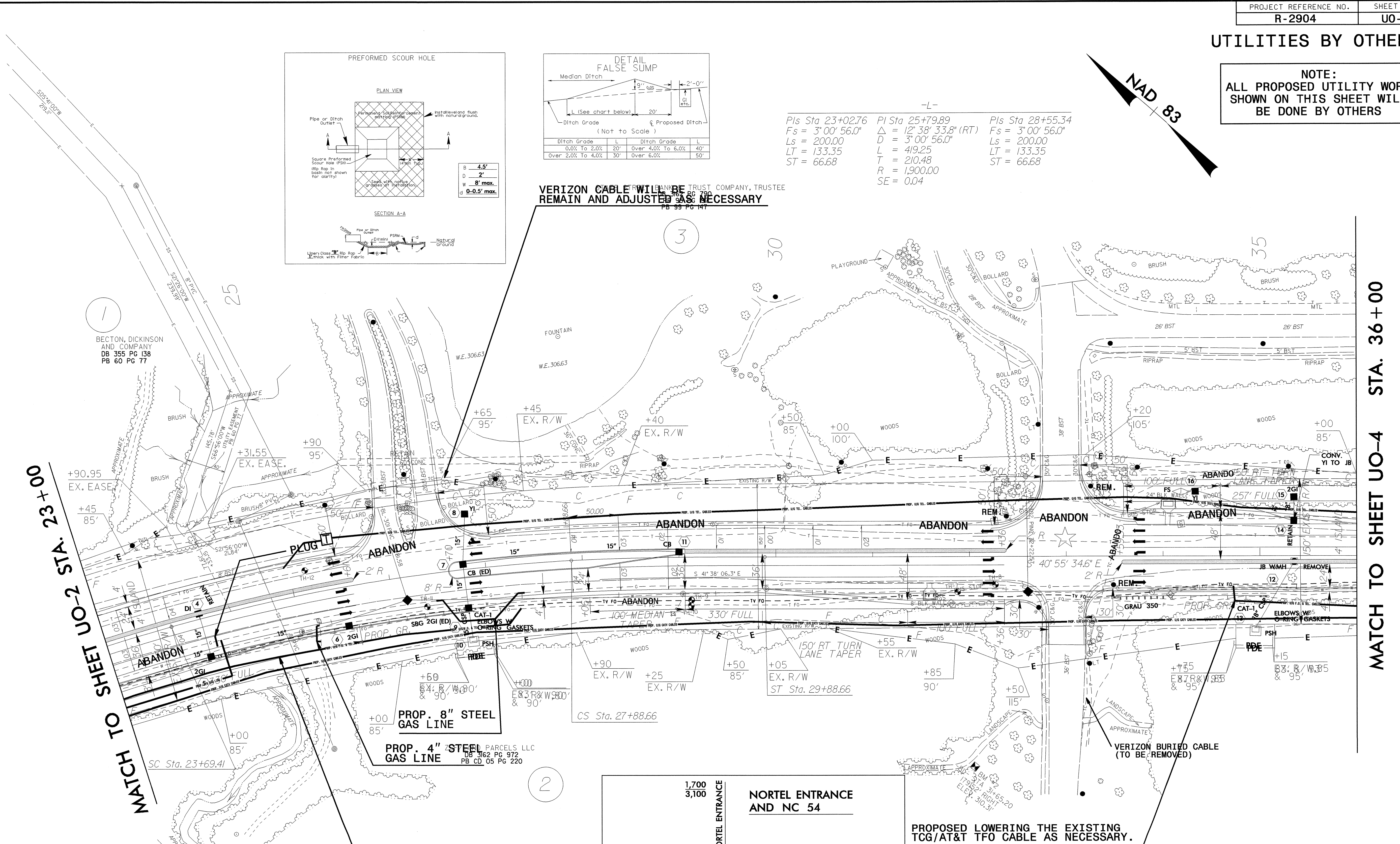
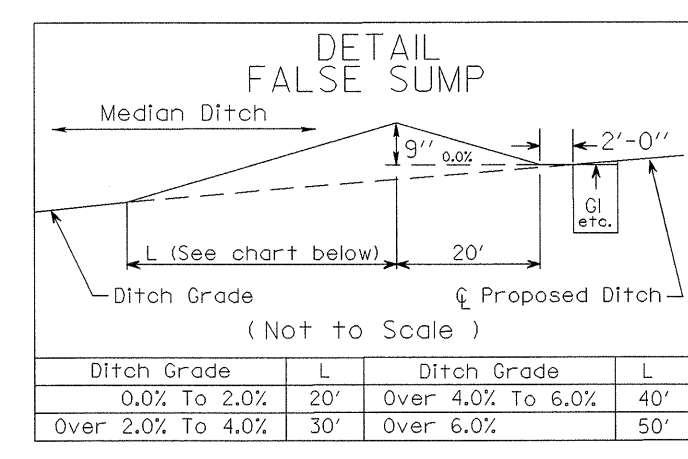
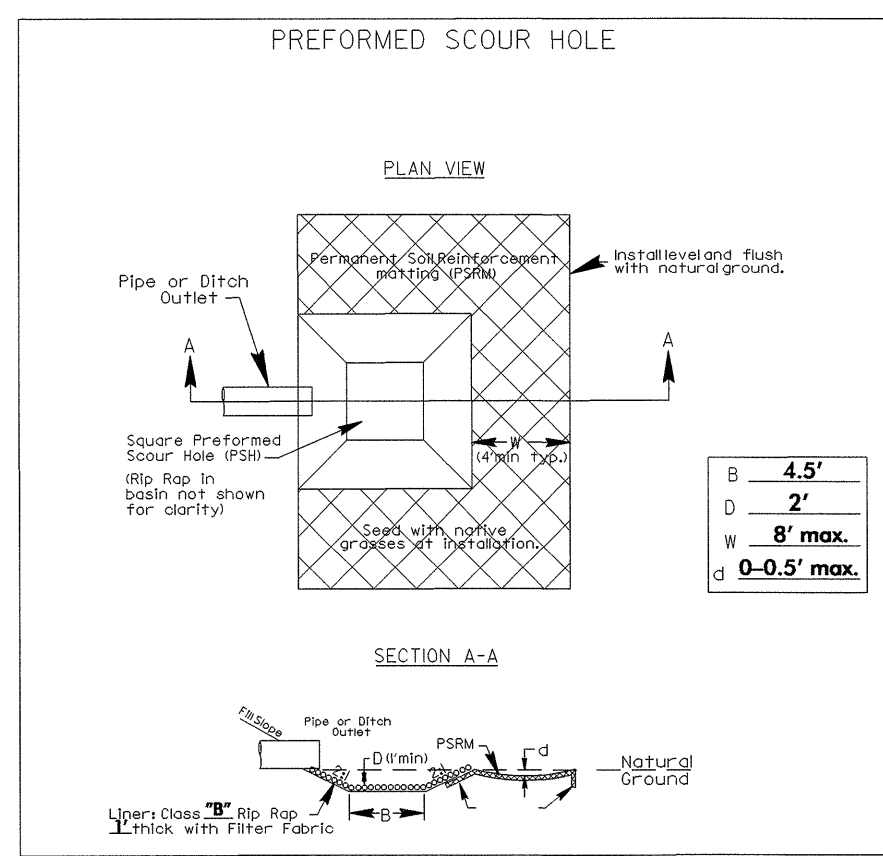
NOTE:
ALL PROPOSED UTILITY WORK
SHOWN ON THIS SHEET WILL
BE DONE BY OTHERS



-L-

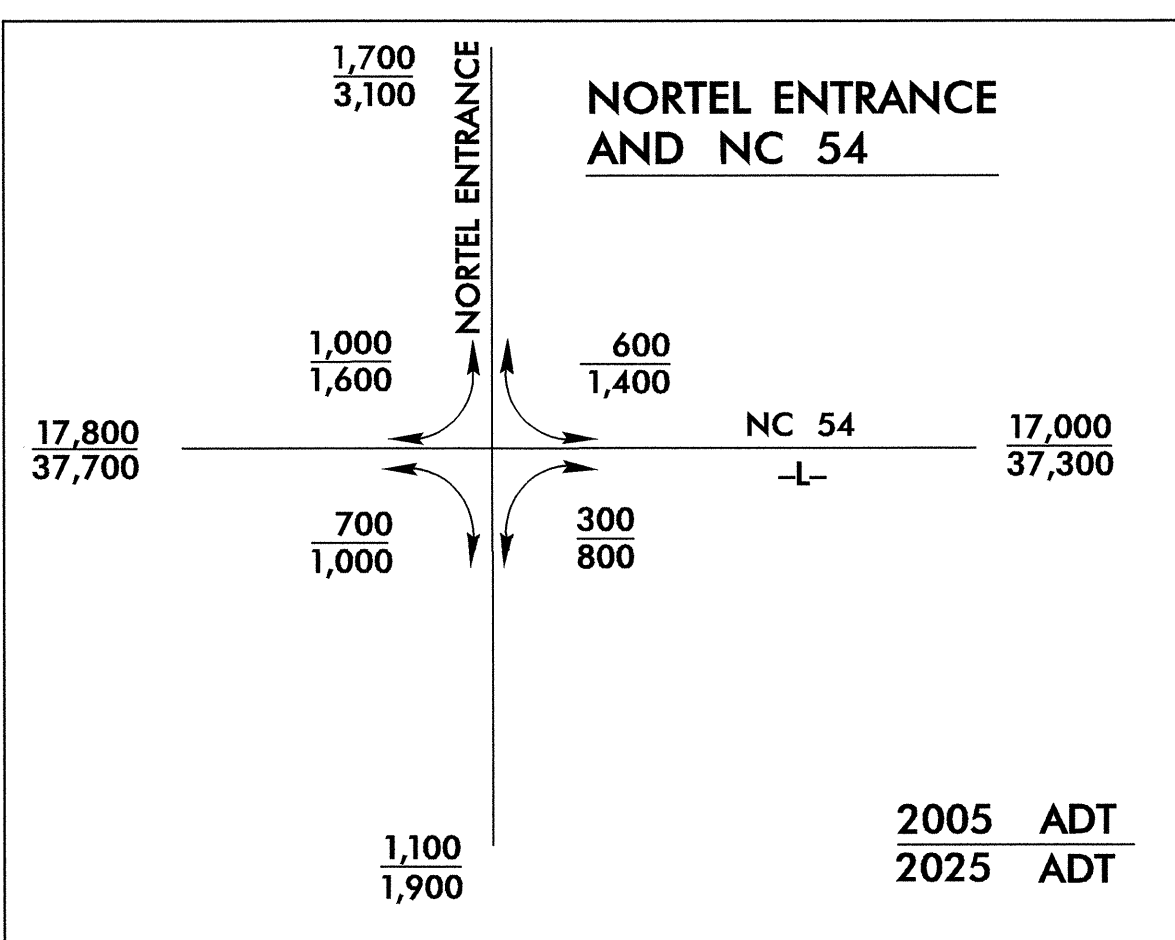
Pls Sta 23+02.76	Pl Sta 25+79.89	Pls Sta 28+55.34
Fs = 3' 00' 56.0"	$\Delta = 12' 38' 33.8"$ (RT)	Fs = 3' 00' 56.0"
Ls = 200.00	D = 3' 00' 56.0"	Ls = 200.00
LT = 133.35	L = 419.25	LT = 133.35
ST = 66.68	T = 210.48	ST = 66.68
	R = 1,900.00	
	SE = 0.04	

VERIZON CABLE WILL BE REMAIN AND ADJUSTED AS NECESSARY



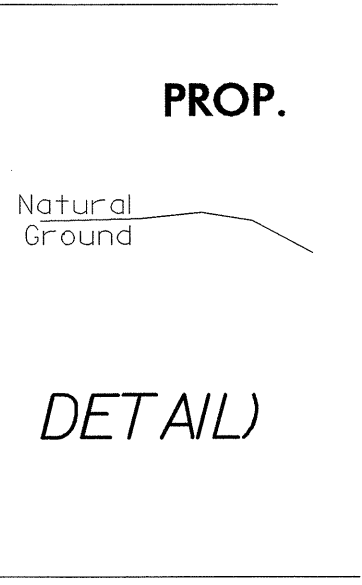
MATCH TO SHEET UO-2 STA. 23+00

MATCH TO SHEET UO-4 STA. 36+00



PROPOSED LOWERING THE EXISTING TCG/AT&T TFO CABLE AS NECESSARY.

☆ EXIST. SIGNAL
FOR -L- PROFILE SEE SHEET 8
PSH: PREFORMED SCOUR HOLE (SEE DETAIL)
SBG: SHOULDER BERM GUTTER



REVISIONS

8/17/99
30-SEP-2004 14:00
R:\Utilities\VR\U0-3\U03.DGN
R:\Utilities\VR\U0-3\U03.DGN
R:\Utilities\VR\U0-3\U03.DGN