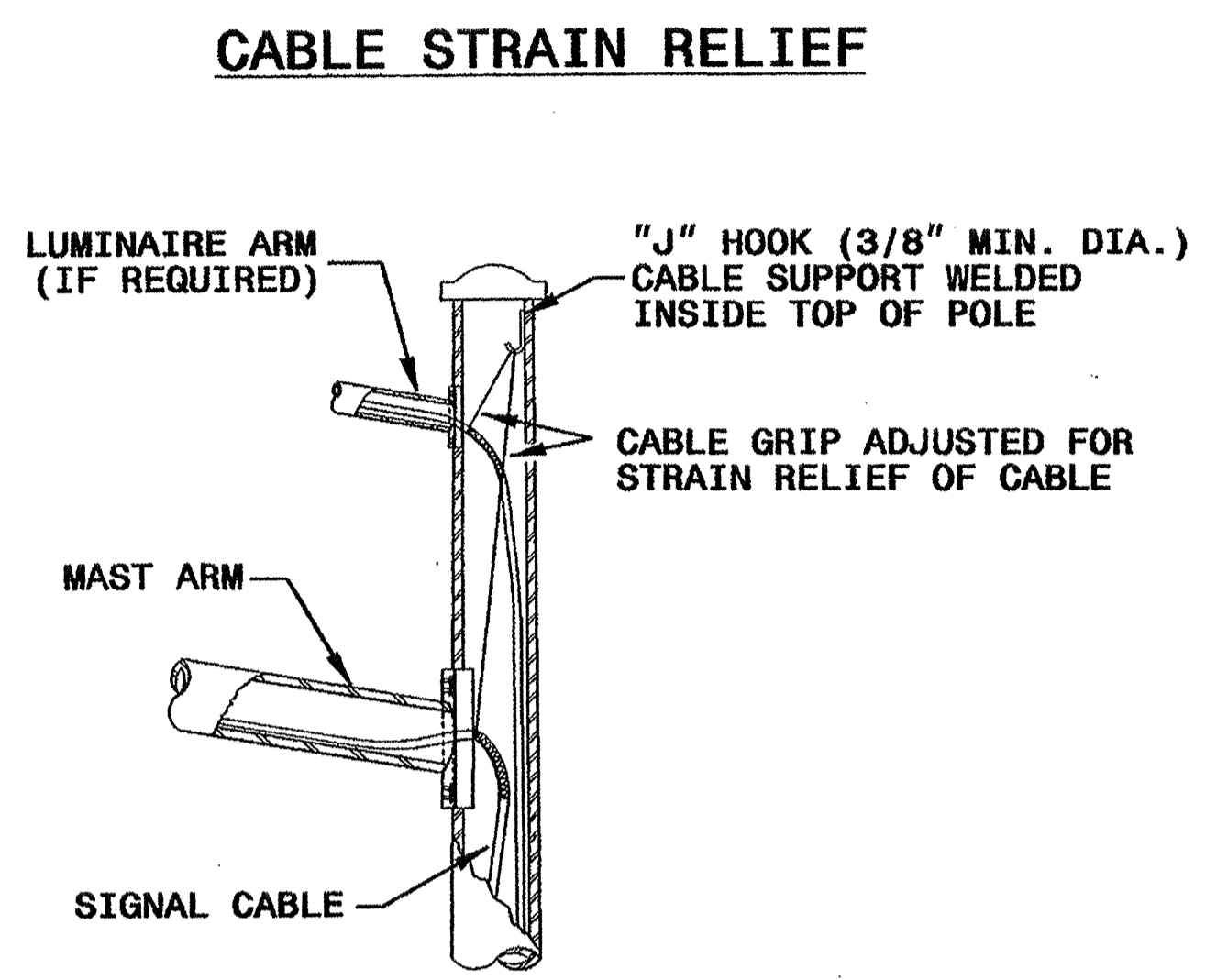
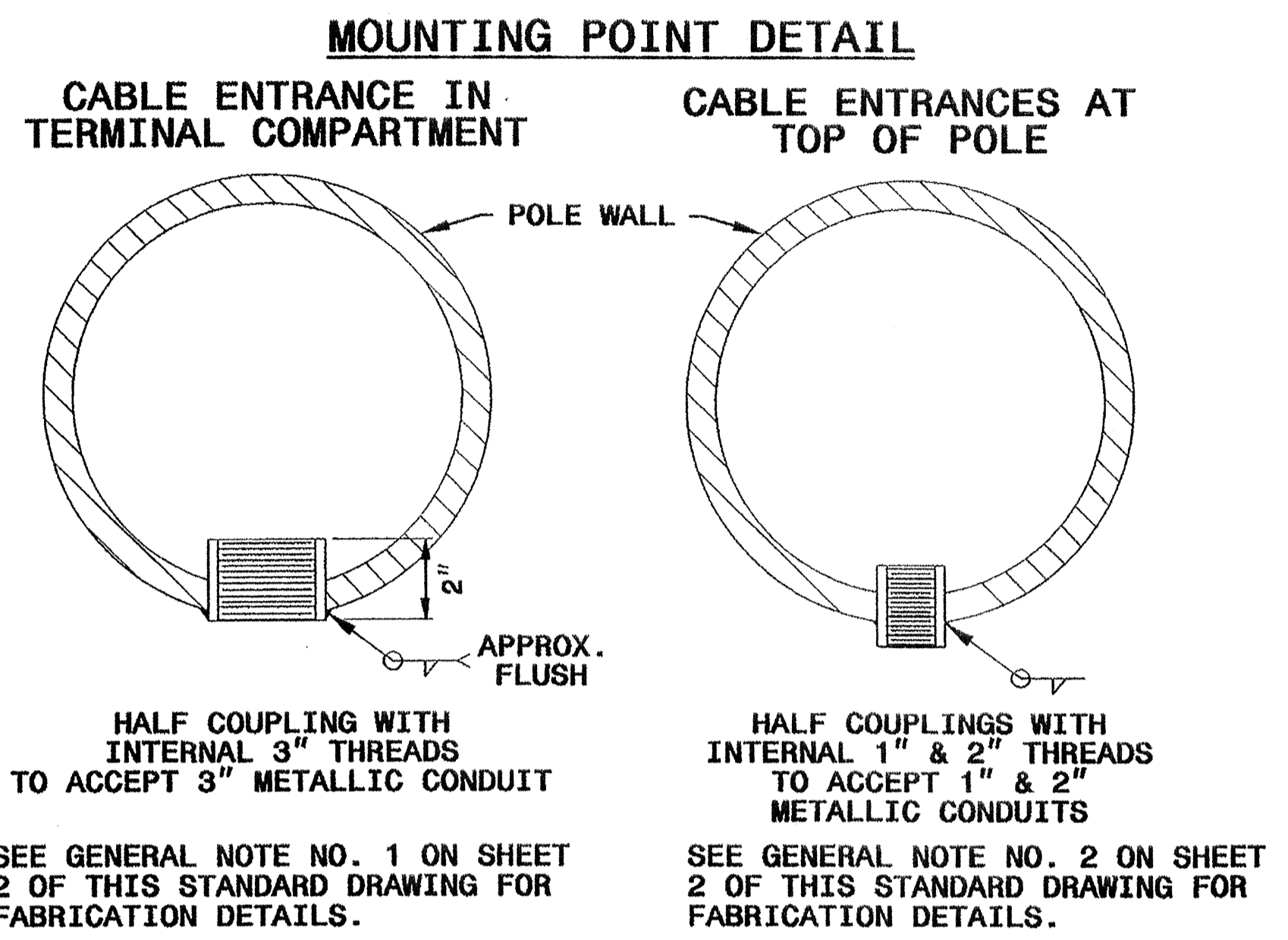


STATE OF NORTH CAROLINA  
DEPT. OF TRANSPORTATION  
DIVISION OF HIGHWAYS  
RALEIGH, N.C.

9-03

ENGLISH STANDARD DRAWING FOR  
METAL POLES  
MISCELLANEOUS DETAILS

SHEET 3 OF 3  
1740.01

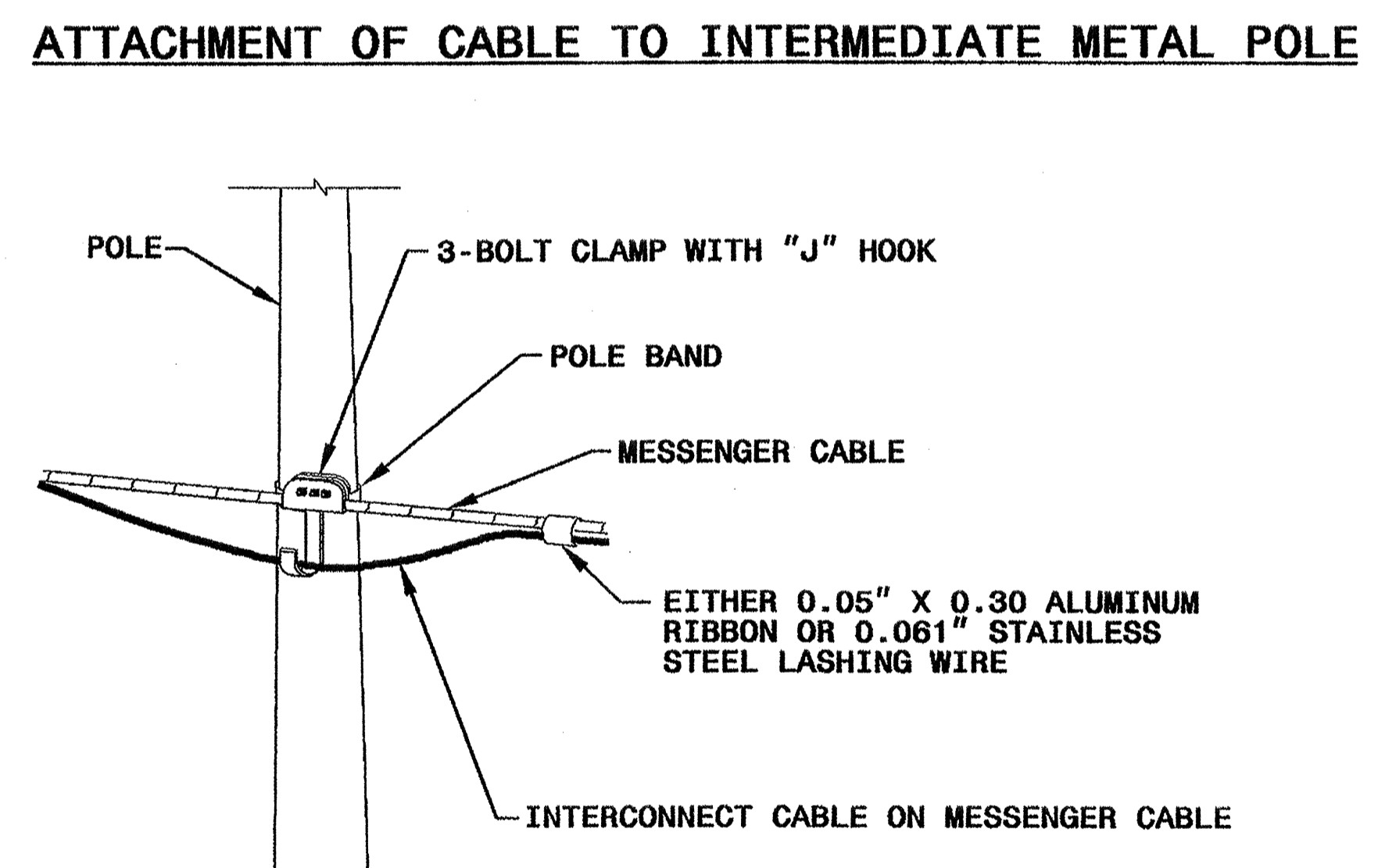
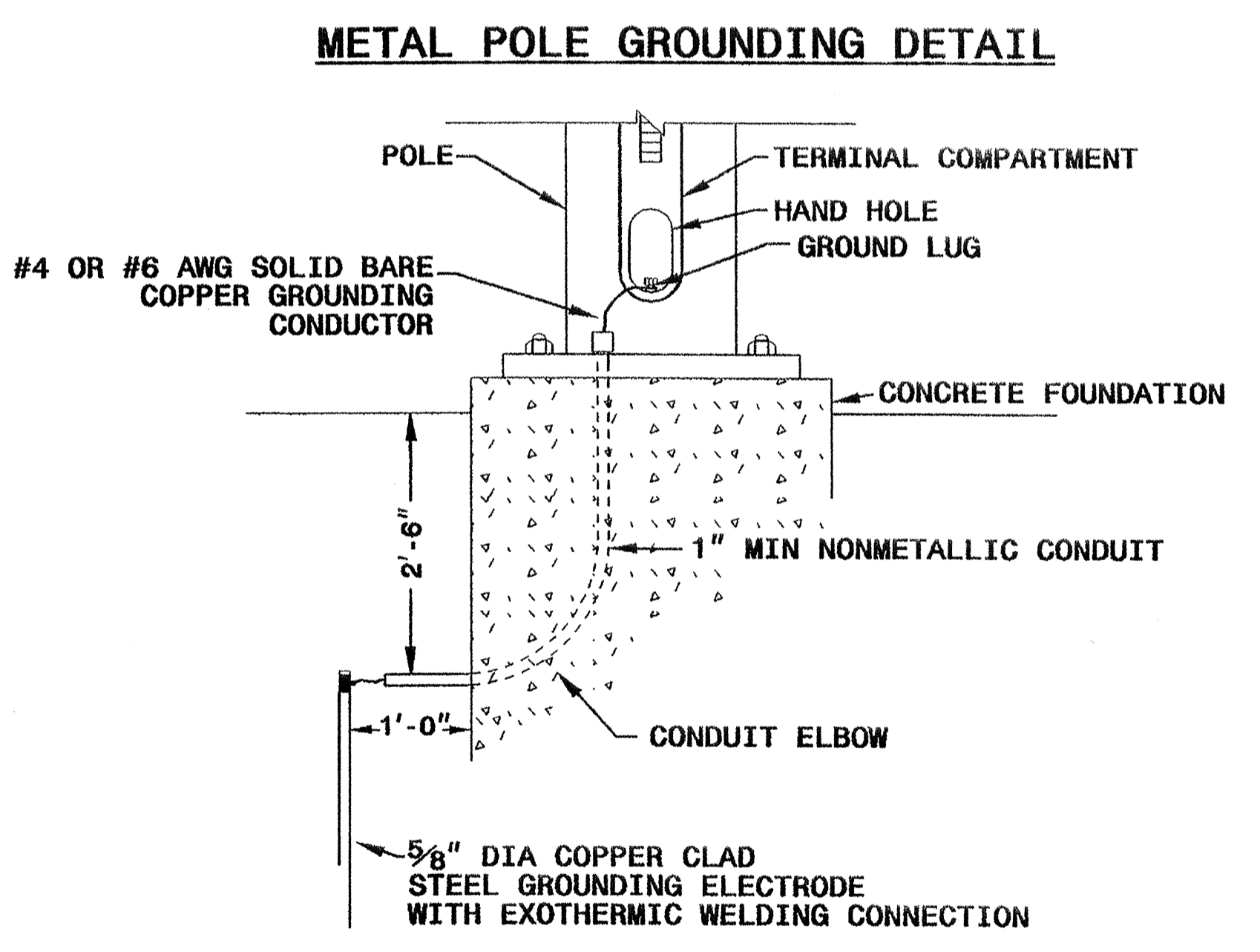


STATE OF NORTH CAROLINA  
DEPT. OF TRANSPORTATION  
DIVISION OF HIGHWAYS  
RALEIGH, N.C.

9-03

ENGLISH STANDARD DRAWING FOR  
METAL POLES  
MISCELLANEOUS DETAILS

SHEET 3 OF 3  
1740.01



19-SEP-2003 14:27 H:\PROJECTS\1740-01\1740-01\1740-01.dwg second.dwg

<p>Structural Engineer</p> <p>DEBESH C. SARTHAR</p>	<p>Electrical Engineer</p> <p>MILTON I. DEAN</p>
<p><i>D. Sarthar</i> 9/19/2003</p> <p>SIGNATURE DATE</p>	<p><i>Milton I. Dean</i> 9/22/03</p> <p>SIGNATURE DATE</p>
<p><b>Standard Drawings</b> Traffic Management and Signal Systems Unit 122 N. McDowell St., Raleigh, NC 27603</p>	
<p><b>See Plate for Title</b></p>	
<p>Original: 2002 Standards</p>	