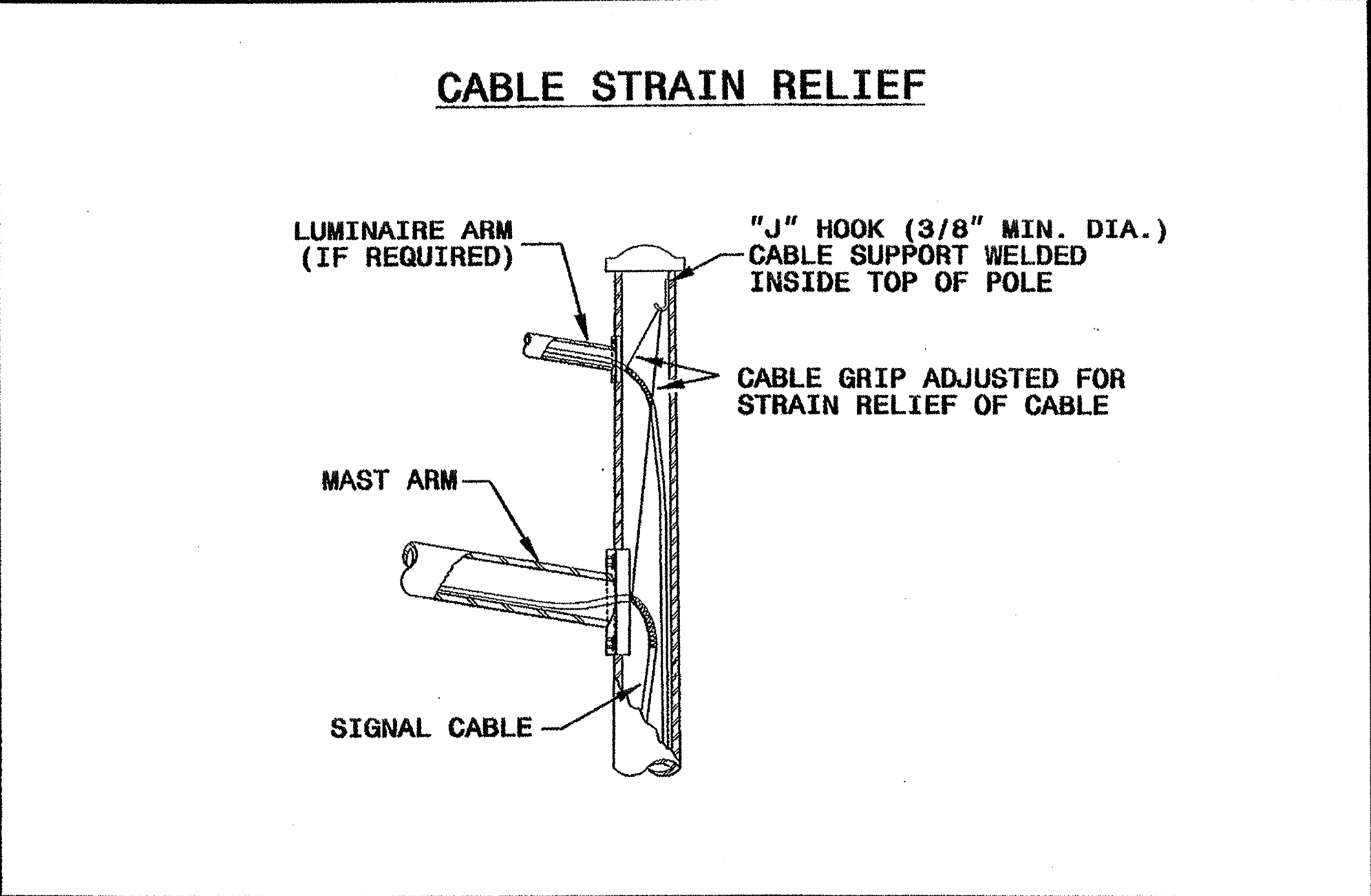
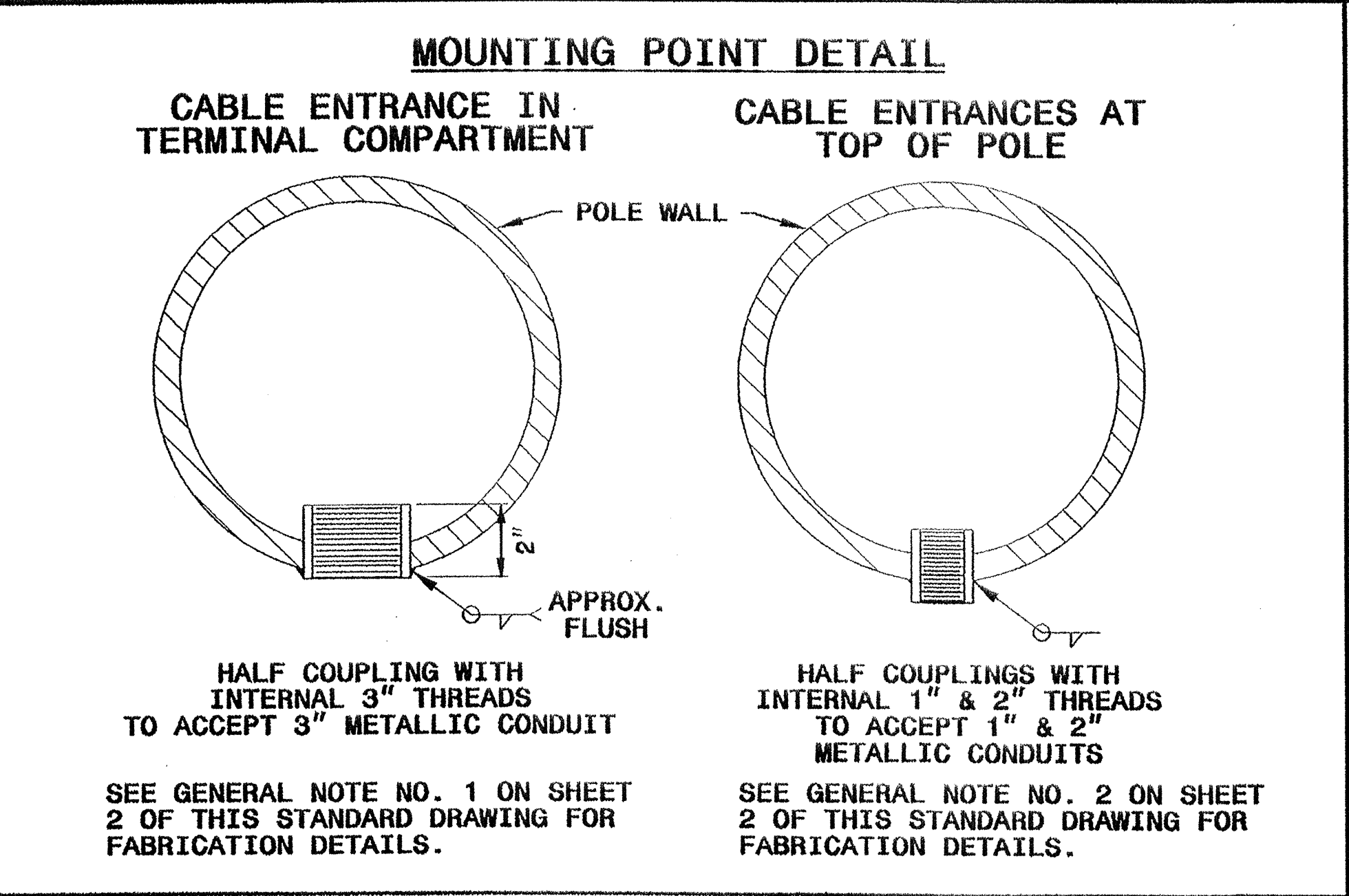


STATE OF  
NORTH CAROLINA  
DEPT. OF TRANSPORTATION  
RALEIGH, N.C.

9-03

ENGLISH STANDARD DRAWING FOR  
METAL POLES  
MISCELLANEOUS DETAILS

SHEET 3 OF 3  
1740.01

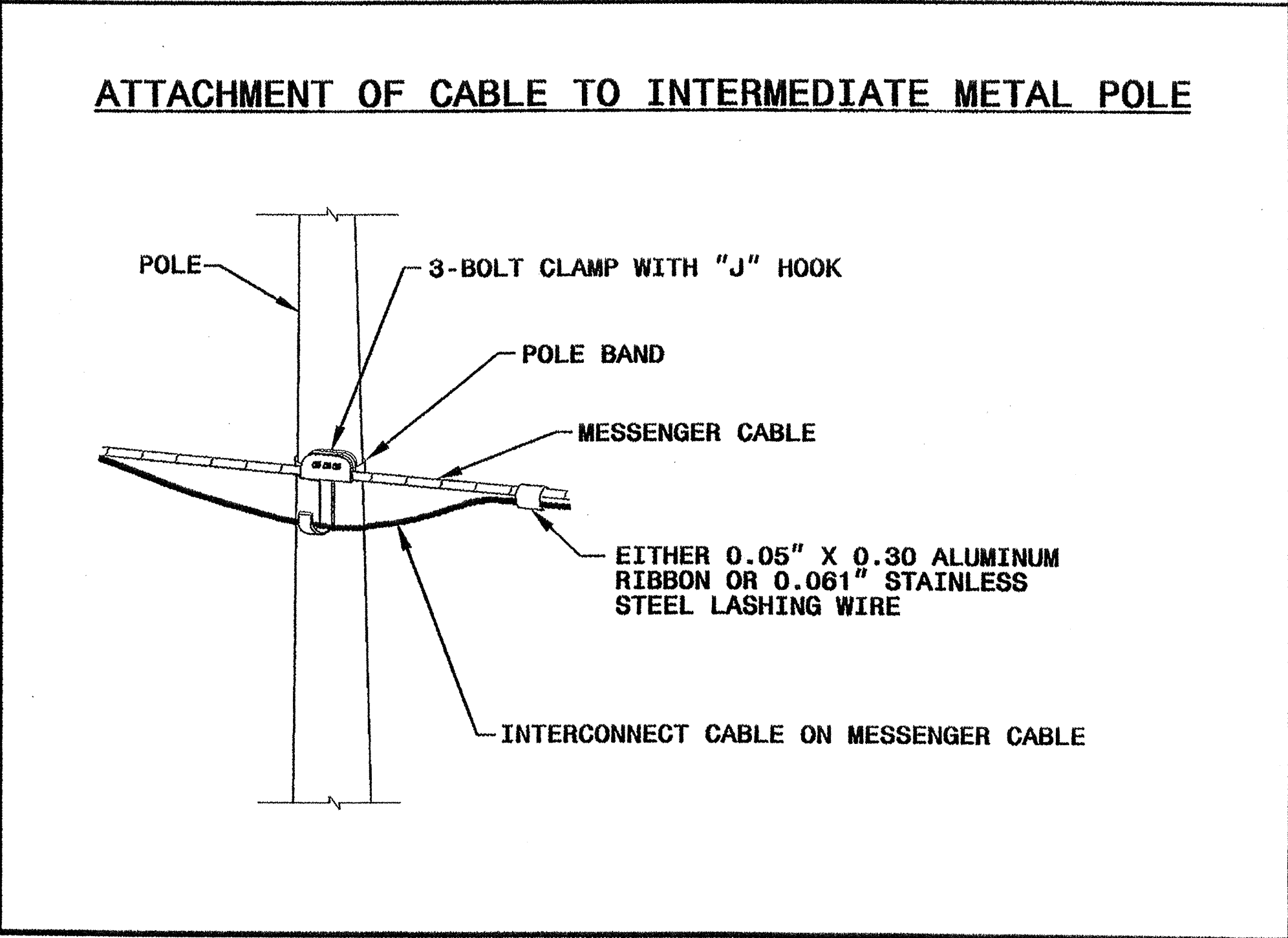
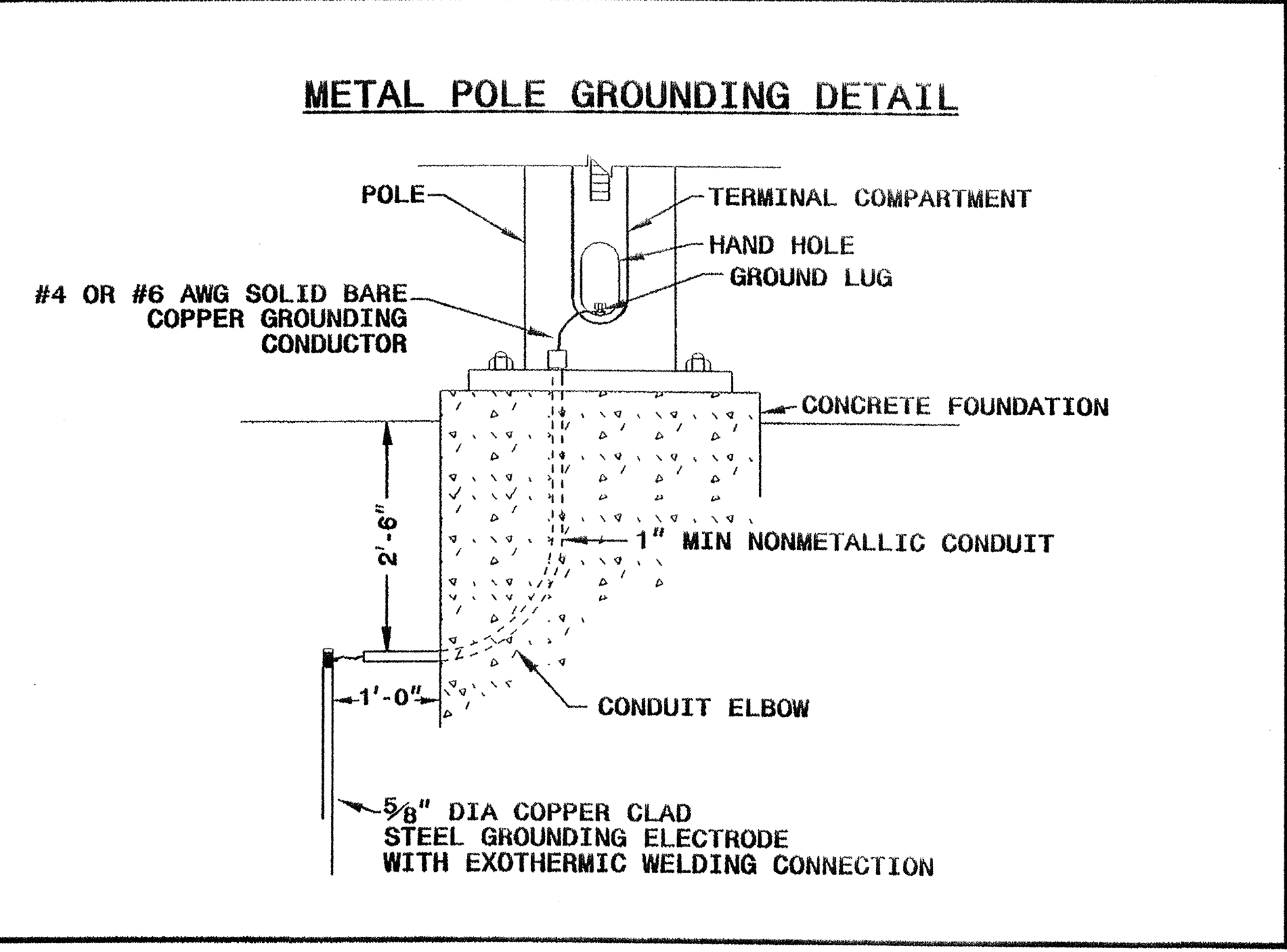




STATE OF  
NORTH CAROLINA  
DEPT. OF TRANSPORTATION  
RALEIGH, N.C.

9-03

ENGLISH STANDARD DRAWING FOR  
METAL POLES  
MISCELLANEOUS DETAILS

SHEET 3 OF 3  
1740.01



<p>Structural Engineer</p>  <p><i>D. Sax Kar</i> 9/19/03 SIGNATURE DATE</p>	<p>Electrical Engineer</p>  <p><i>Milton Dea</i> 9/22/03 SIGNATURE DATE</p>
<p><b>Standard Drawings</b> Traffic Management and Signal Systems Unit 122 N. McDowell St., Raleigh, NC 27603</p>	
<p><b>See Plate for Title</b></p>	
<p>Original: 2002 Standards</p>	