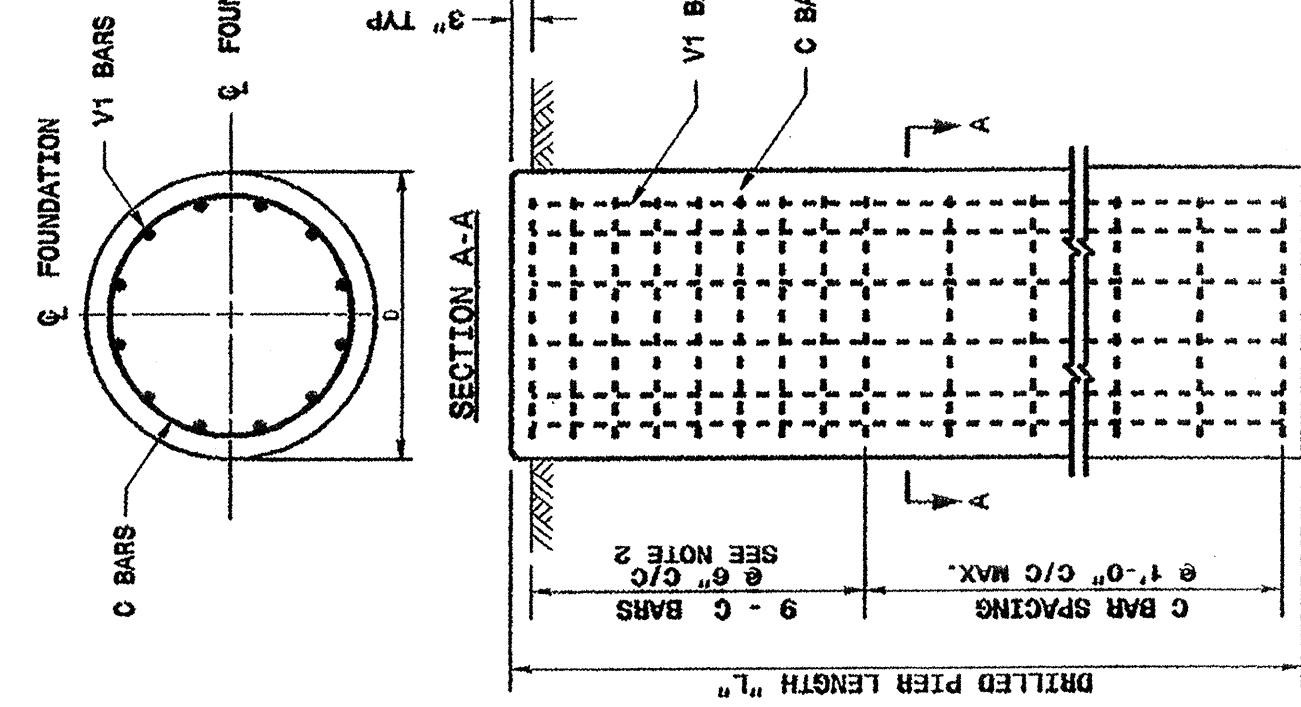


STATE OF NORTH CAROLINA  
 DEPT. OF TRANSPORTATION  
 DIVISION OF HIGHWAYS  
 RALEIGH, N.C.

ENGLISH STANDARD DRAWING FOR  
**METAL POLE FOUNDATIONS**  
 REINFORCING CAGE DETAILS

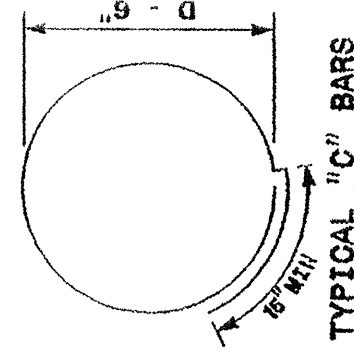
SHEET 1 OF 2  
**1742.01**



REINFORCING STEEL TABLE FOR STANDARD DRILL PIER SHAFT (42" & 48" DIAMETER)

SHAFT SIZE (IN.)	VOLUME (Cu. Yds.)	BAR No.	Size	Type	Length
42"	.866 X L	V1	#6	STR.	42"
		C	#4	CIR.	10'-8"
48"	.465 X L	V1	#8	STR.	48"
		C	#4	CIR.	12'-8"

\* See Construction Note No. 1.  
 \*\* See Construction Note No. 2.



REINFORCING STEEL TABLE FOR STANDARD 42" and 48" DRILL PIER SHAFT WITH TYPE 1 AND TYPE 2 WING WALLS

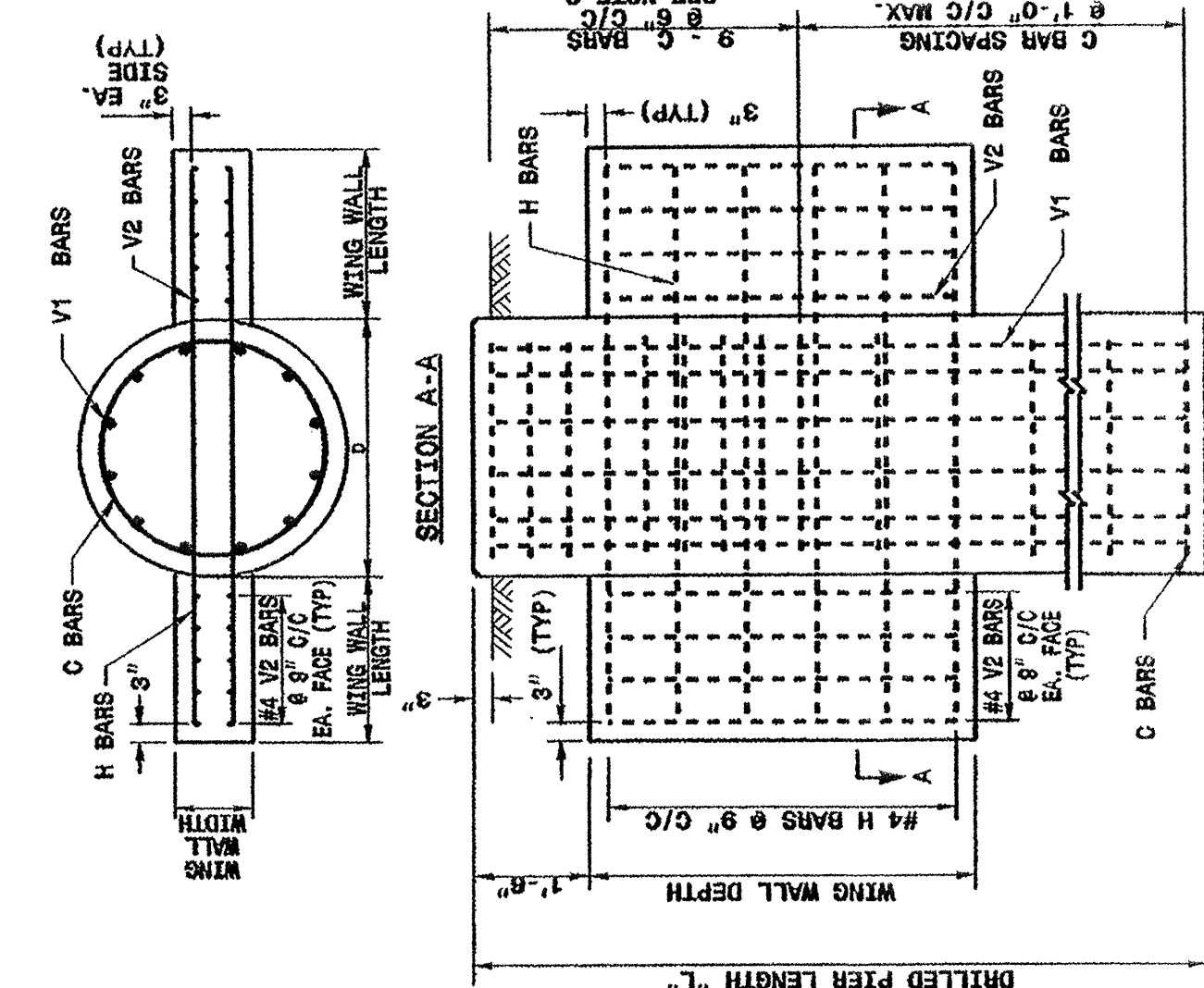
Wing Wall Type	Drill Pier Size (In.)	Bar No.	Size	Type	Length
TYPE 1	42"	V1	#6	STR.	42"
		H	#4	STR.	2'-6"
		C	#4	STR.	6'-0"
TYPE 2	42"	V1	#6	STR.	42"
		H	#4	STR.	4'-6"
		C	#4	CIR.	10'-8"
TYPE 2	48"	V1	#8	STR.	48"
		H	#4	STR.	4'-6"
		C	#4	CIR.	12'-8"

\* See Construction Note No. 1.  
 \*\* See Construction Note No. 2.

WING WALL DETAILS

Wing Wall Type	Wing Wall Length (Ft.)	Wing Wall Width (Ft.)	Wing Wall Depth (Ft.)	Concrete Volume (Cu. Yds.)
TYPE 1	7'-6"	1'-0"	8'-0"	1.4
TYPE 2	8'-0"	1'-0"	8'-0"	1.2

See Construction Note No. 3.

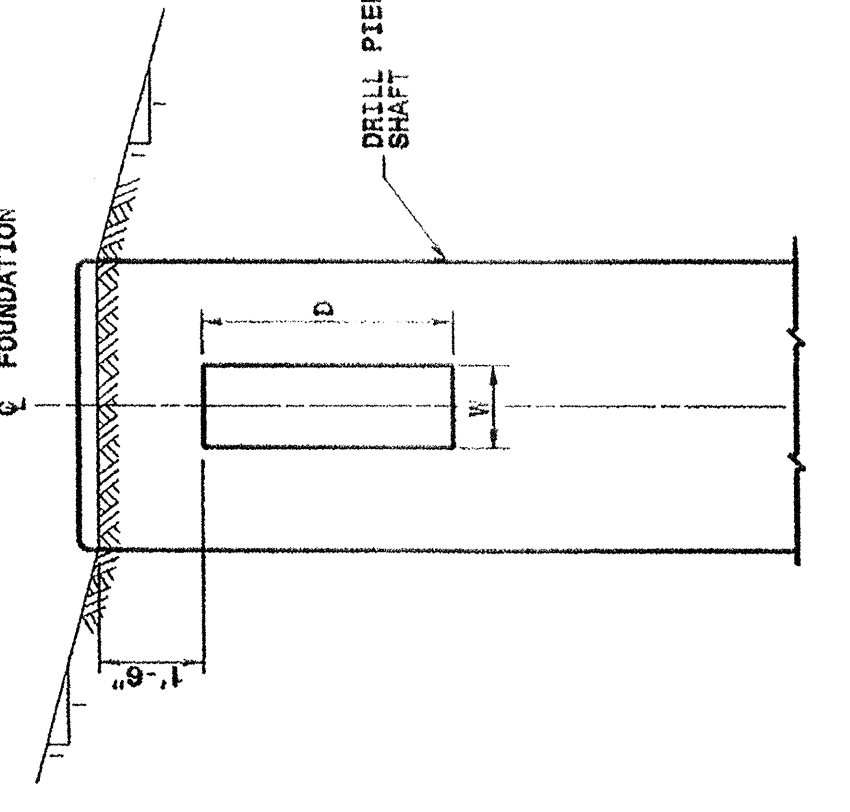


STATE OF NORTH CAROLINA  
 DEPT. OF TRANSPORTATION  
 DIVISION OF HIGHWAYS  
 RALEIGH, N.C.

ENGLISH STANDARD DRAWING FOR  
**METAL POLE FOUNDATIONS**  
 REINFORCING CAGE DETAILS

SHEET 1 OF 2  
**1742.01**

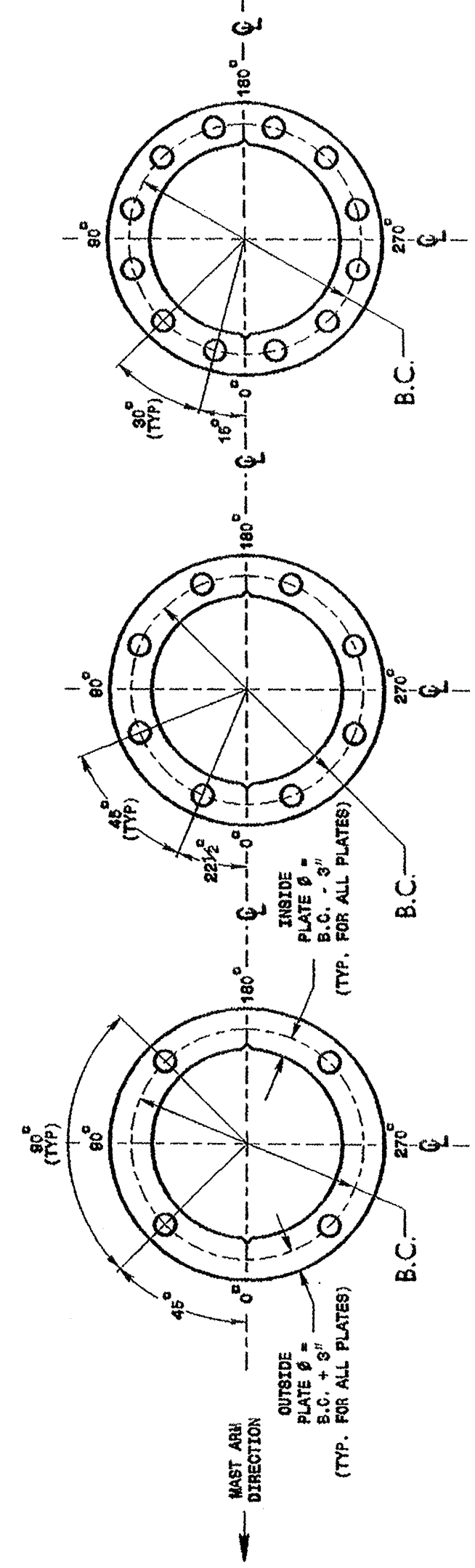
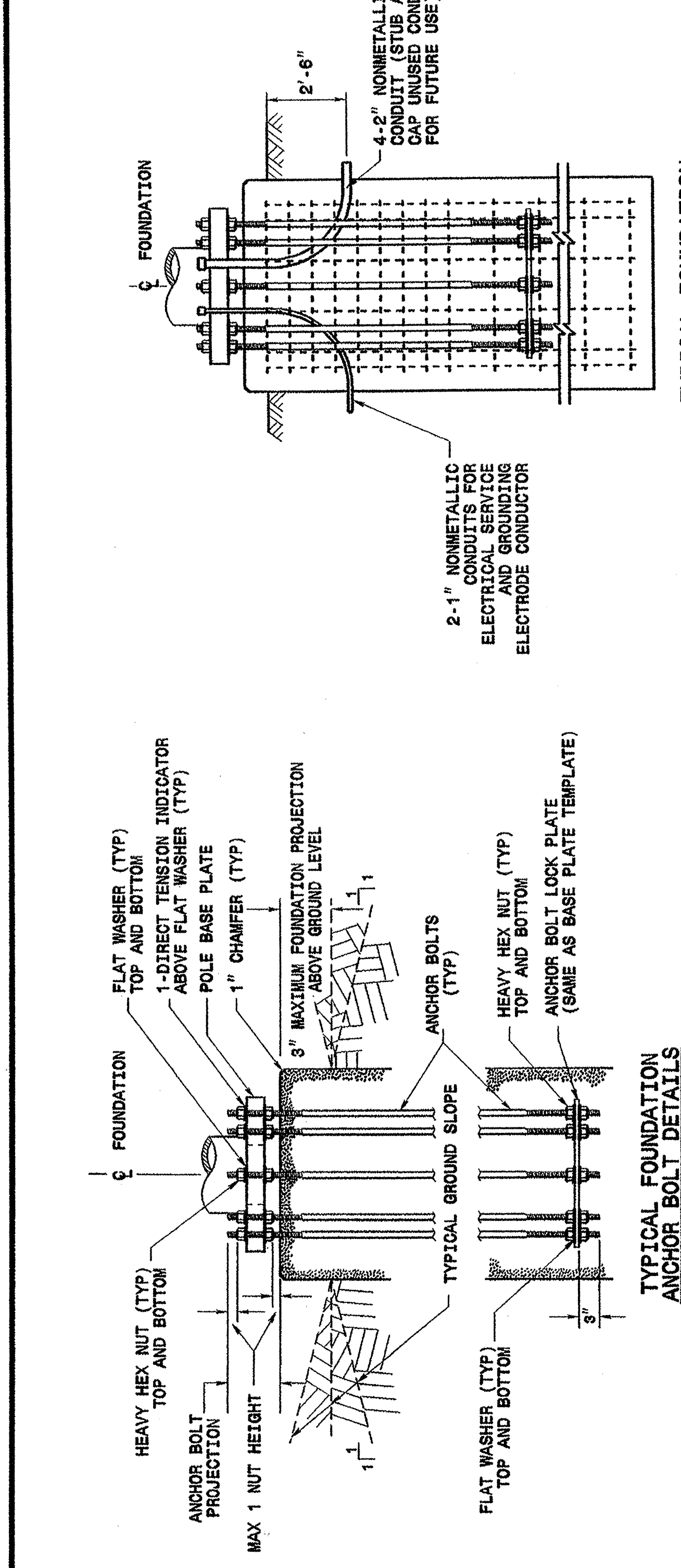
- NOTES**
- THE NUMBER OF C-BARS IS BASED ON FOUNDATION DEPTH. SEE FOUNDATION SELECTION TABLES.
  - CIRCULAR TIE REINFORCING RINGS MAY BE VERTICALLY SPACED AT 2'-0" TO 2'-6" AT A DEPTH OF 4'-0" AND 6'-0" TO FACILITATE THE INSTALLATION OF ELECTRICAL CONDUIT ENTERING IN THE CAGE.
  - THE LENGTH OF V1-BARS IS BASED ON FOUNDATION DEPTH. SEE FOUNDATION SELECTION TABLES.
  - THE QUANTITIES FOR STEEL AND CONCRETE SHOWN IN THE WING WALL DETAILS CHART REFLECT THE AMOUNT OF MATERIAL FOR 1 PAIR OF WING WALLS (2 WING WALLS PER DRILL PIER SHAFT.)
  - CONCRETE DRILL PIER SHAFT VOLUME (CU. YDS.):  
 FOR 42" DIA. = .866XL  
 FOR 48" DIA. = .465XL
  - DEFORM REINFORCING STEEL TO CONFORM TO ASTM A615 GRADE 60. TIES MAY BE DEFORMED OR PLAIN.
  - CAST CONCRETE AGAINST UNDISTURBED SOIL.
  - DO NOT ERECT TRAFFIC SIGNAL STRUCTURES BEFORE THE CONCRETE IN THE FOUNDATION HAS ATTAINED A MINIMUM COMPRESSIVE STRENGTH OF 3000 PSI.
  - MAKE PROVISIONS FOR DRAINAGE OF WATER FROM INSIDE OF THE METAL SUPPORT.
  - FOR OTHER DETAILS REGARDING CONSTRUCTION OF CONCRETE FOUNDATION SEE PROJECT SPECIAL PROVISIONS.
  - IN CASE OF ANY CROSS SLOPES, GRADE AROUND THE FOUNDATION AS FOLLOWS:



STATE OF NORTH CAROLINA  
 DEPT. OF TRANSPORTATION  
 DIVISION OF HIGHWAYS  
 RALEIGH, N.C.

ENGLISH STANDARD DRAWING FOR  
**METAL POLE FOUNDATIONS**  
 INSTALLATION DETAILS

SHEET 2 OF 2  
**1742.01**



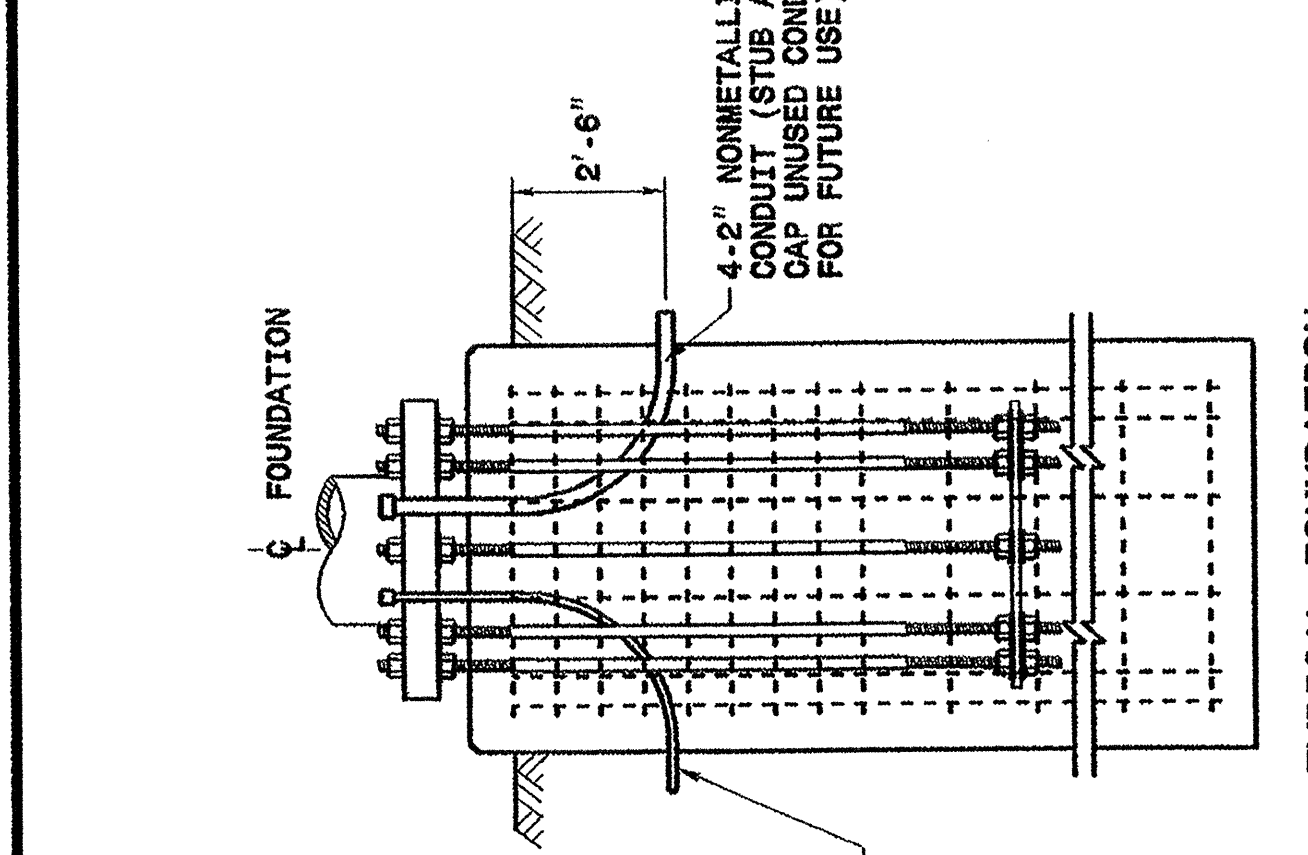
FOR 4 BOLT BASE PLATE  
 CONSTRUCT TEMPLATES AND PLATES FROM 3/8" THICK STEEL. GALVANIZING IS NOT REQUIRED.  
 BASE PLATE TEMPLATE AND ANCHOR BOLT LOCK PLATE DETAILS

FOR 8 BOLT BASE PLATE  
 FOR 12 BOLT BASE PLATE

STATE OF NORTH CAROLINA  
 DEPT. OF TRANSPORTATION  
 DIVISION OF HIGHWAYS  
 RALEIGH, N.C.

ENGLISH STANDARD DRAWING FOR  
**METAL POLE FOUNDATIONS**  
 INSTALLATION DETAILS

SHEET 2 OF 2  
**1742.01**



TYPICAL FOUNDATION CONDUIT DETAILS

<p>Structural Engineer</p> <p>Signature: <i>D. Sankar</i> Date: 9.12.03</p>	<p>Electrical Engineer</p> <p>Signature: <i>Milton J. Dean</i> Date: 9/18/03</p>
<p>Standard Drawings</p> <p>Traffic Management and Signal Systems Unit              122 N. McDowell St., Raleigh, NC 27603</p>	
<p>See Plate for Title</p>	
<p>Original: 2002 Standards</p>	