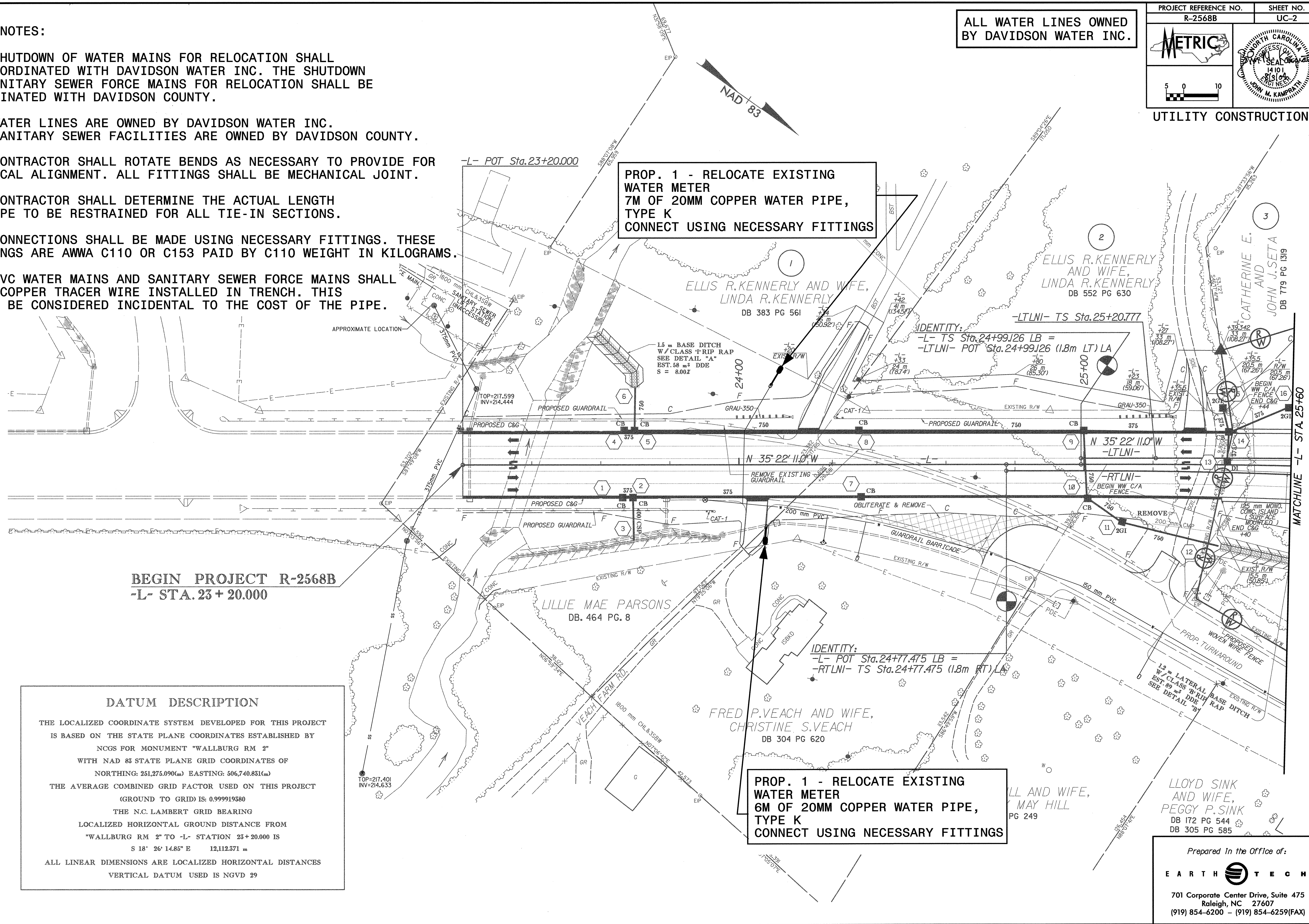


**GENERAL NOTES:**

1. THE SHUTDOWN OF WATER MAINS FOR RELOCATION SHALL BE COORDINATED WITH DAVIDSON WATER INC. THE SHUTDOWN OF SANITARY SEWER FORCE MAINS FOR RELOCATION SHALL BE COORDINATED WITH DAVIDSON COUNTY.
2. ALL WATER LINES ARE OWNED BY DAVIDSON WATER INC. ALL SANITARY SEWER FACILITIES ARE OWNED BY DAVIDSON COUNTY.
2. THE CONTRACTOR SHALL ROTATE BENDS AS NECESSARY TO PROVIDE FOR VERTICAL ALIGNMENT. ALL FITTINGS SHALL BE MECHANICAL JOINT.
3. THE CONTRACTOR SHALL DETERMINE THE ACTUAL LENGTH OF PIPE TO BE RESTRAINED FOR ALL TIE-IN SECTIONS.
4. ALL CONNECTIONS SHALL BE MADE USING NECESSARY FITTINGS. THESE FITTINGS ARE AWWA C110 OR C153 PAID BY C110 WEIGHT IN KILOGRAMS.
5. ALL PVC WATER MAINS AND SANITARY SEWER FORCE MAINS SHALL HAVE COPPER TRACER WIRE INSTALLED IN TRENCH. THIS SHALL BE CONSIDERED INCIDENTAL TO THE COST OF THE PIPE.



**PROP. 1 - RELOCATE EXISTING WATER METER  
7M OF 20MM COPPER WATER PIPE,  
TYPE K  
CONNECT USING NECESSARY FITTINGS**

**PROP. 1 - RELOCATE EXISTING WATER METER  
6M OF 20MM COPPER WATER PIPE,  
TYPE K  
CONNECT USING NECESSARY FITTINGS**

**BEGIN PROJECT R-2568B  
-L- STA. 23 + 20.000**

**DATUM DESCRIPTION**

THE LOCALIZED COORDINATE SYSTEM DEVELOPED FOR THIS PROJECT IS BASED ON THE STATE PLANE COORDINATES ESTABLISHED BY NCGS FOR MONUMENT "WALLBURG RM 2" WITH NAD 83 STATE PLANE GRID COORDINATES OF

NORTHING: 251,275.090(m) EASTING: 506,740.851(m)

THE AVERAGE COMBINED GRID FACTOR USED ON THIS PROJECT (GROUND TO GRID) IS: 0.999919380

THE N.C. LAMBERT GRID BEARING LOCALIZED HORIZONTAL GROUND STATION FROM "WALLBURG RM 2" TO -L- STATION 23+20.000 IS

S 18° 26' 14.85" E 12,112.371 m

ALL LINEAR DIMENSIONS ARE LOCALIZED HORIZONTAL DISTANCES

VERTICAL DATUM USED IS NGVD 29

3/21/2004 12:44:56 PM 2568buc2.dwg