

UTILITY CONSTRUCTION

ALL WATER LINES OWNED BY DAVIDSON WATER INC.

PROP. 242M OF 75MM PVC WATER PIPE, SDR 17, 1.72 MPA WP
1 - 50MM BLOW OFF ASSEMBLY
CONNECT USING NECESSARY FITTINGS

1 - 75MM X 50MM TAPPING SADDLE
1 - 50MM GATE VALVE & VALVE BOX, 1.38 MPA WP
2M OF 50MM PVC WATER PIPE, SDR 17, 1.72 MPA WP
CONNECT USING NECESSARY FITTINGS

PROP. 70M OF 150MM PVC WATER PIPE, SDR 21, 1.38 MPA WP
4 - 200MM 22 1/2° DI BENDS
CONNECT USING NECESSARY FITTINGS

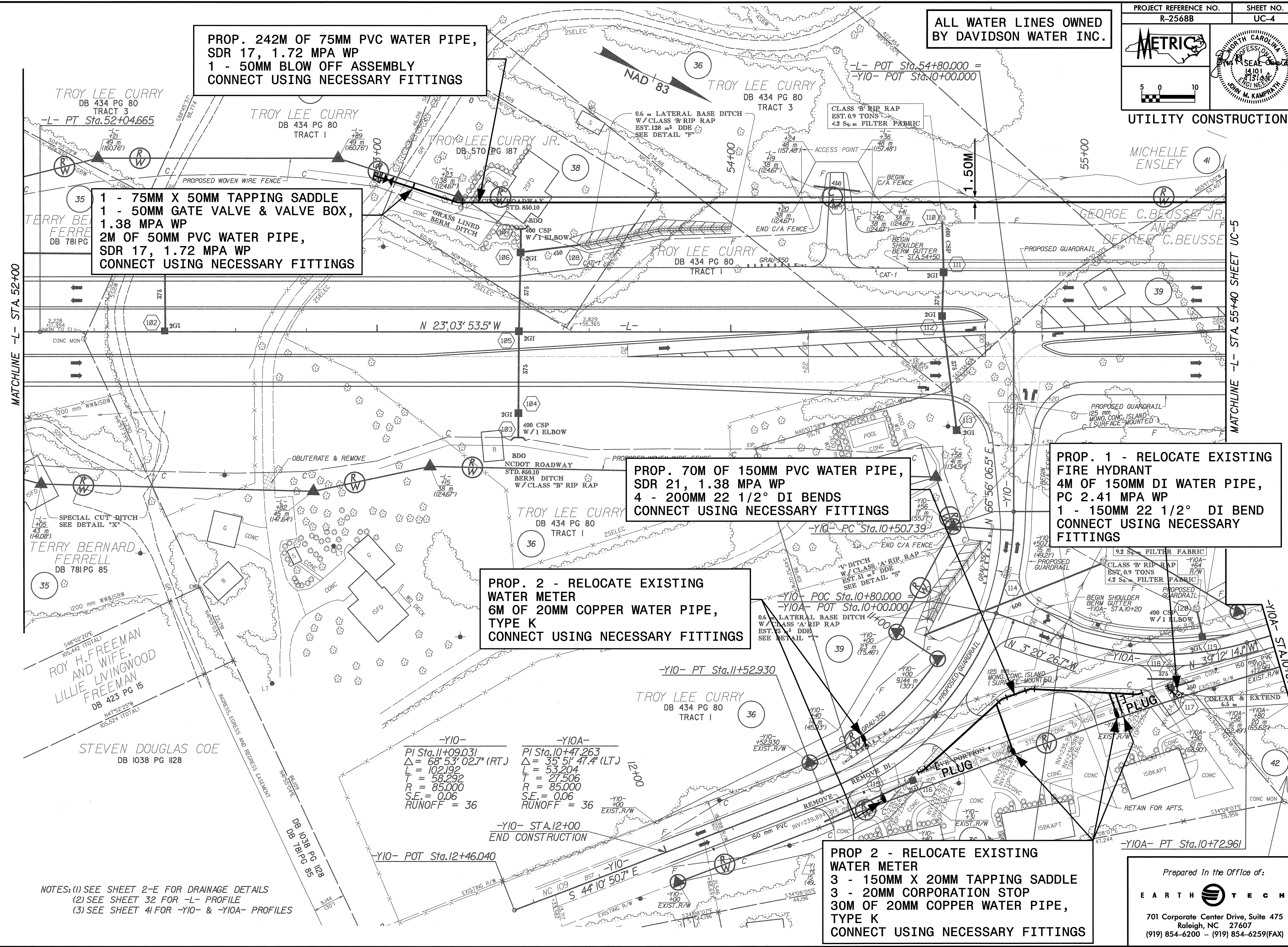
PROP. 1 - RELOCATE EXISTING FIRE HYDRANT
4M OF 150MM DI WATER PIPE, PC 2.41 MPA WP
1 - 150MM 22 1/2° DI BEND
CONNECT USING NECESSARY FITTINGS

PROP. 2 - RELOCATE EXISTING WATER METER
6M OF 20MM COPPER WATER PIPE, TYPE K
CONNECT USING NECESSARY FITTINGS

PROP 2 - RELOCATE EXISTING WATER METER
3 - 150MM X 20MM TAPPING SADDLE
3 - 20MM CORPORATION STOP
30M OF 20MM COPPER WATER PIPE, TYPE K
CONNECT USING NECESSARY FITTINGS

MATCHLINE -L- STA 52+00

MATCHLINE -L- STA 55+40 SHEET UC-5



-Y10-	-Y10A-
PI Sta. 11+09.031	PI Sta. 10+47.263
$\Delta = 68^\circ 53' 02.7''$ (RT.)	$\Delta = 35^\circ 51' 47.4''$ (LT.)
L = 102.192	L = 53.204
T = 58.292	T = 27.506
R = 85.000	R = 85.000
S.E. = 0.06	S.E. = 0.06
RUNOFF = 36	RUNOFF = 36

NOTES: (1) SEE SHEET 2-E FOR DRAINAGE DETAILS
(2) SEE SHEET 32 FOR -L- PROFILE
(3) SEE SHEET 41 FOR -Y10- & -Y10A- PROFILES

Prepared In the Office of:
EARTH TECH
701 Corporate Center Drive, Suite 475
Raleigh, NC 27607
(919) 854-6200 - (919) 854-6259(FAX)