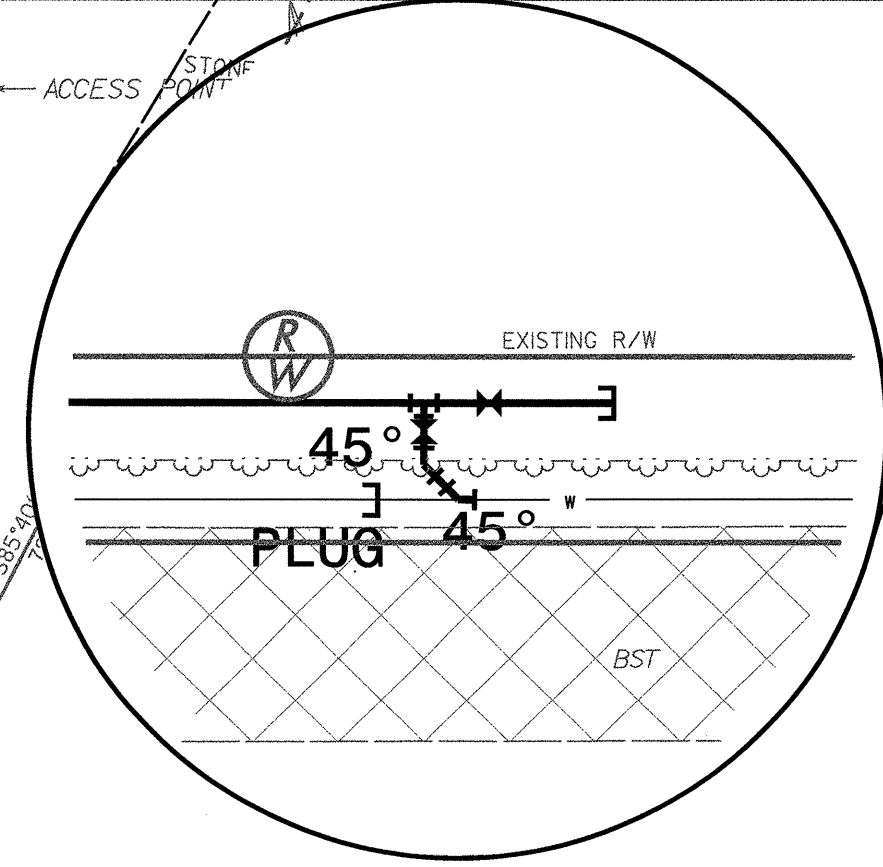
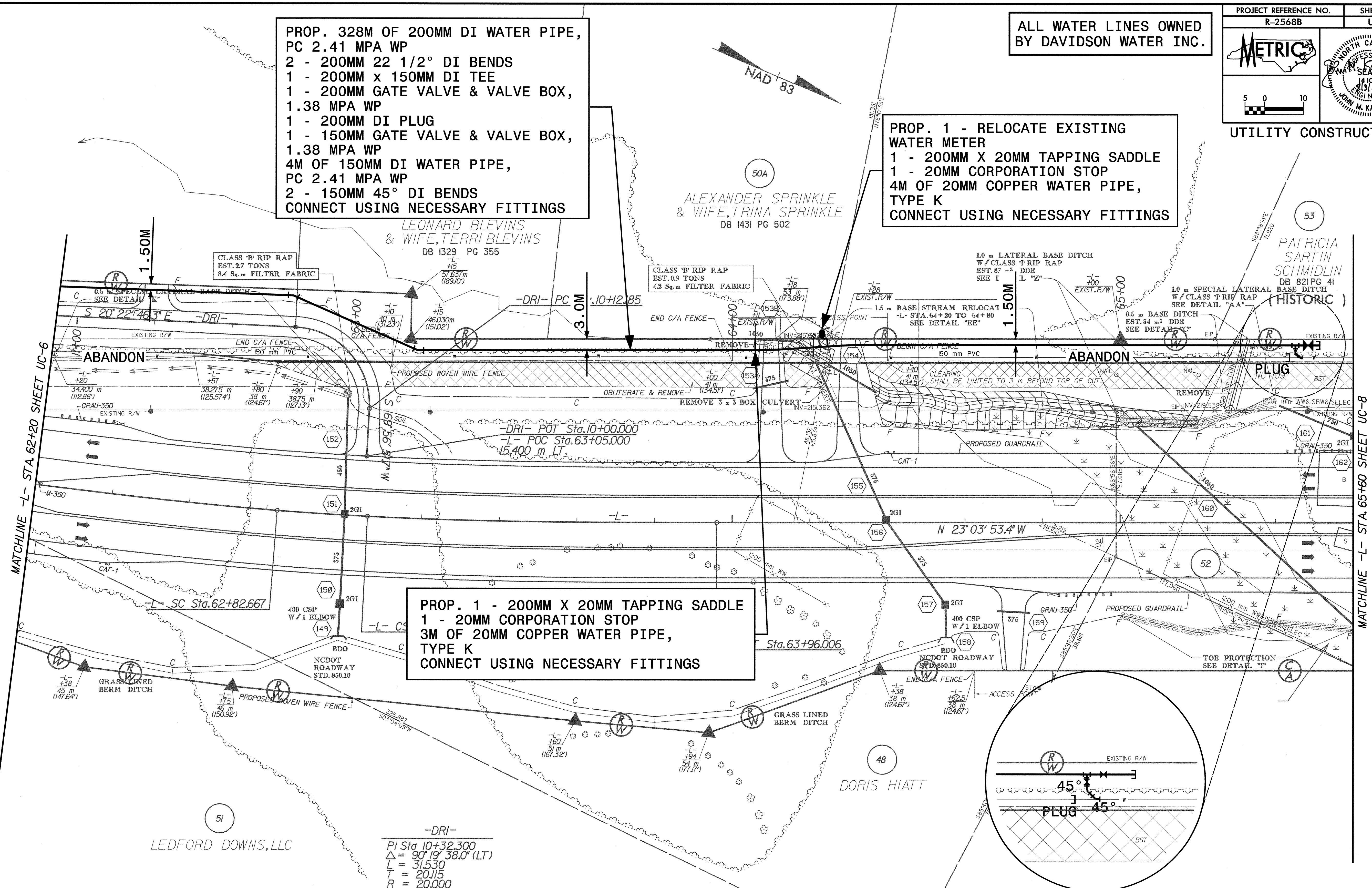


PROP. 328M OF 200MM DI WATER PIPE, PC 2.41 MPA WP
 2 - 200MM 22 1/2° DI BENDS
 1 - 200MM X 150MM DI TEE
 1 - 200MM GATE VALVE & VALVE BOX, 1.38 MPA WP
 1 - 200MM DI PLUG
 1 - 150MM GATE VALVE & VALVE BOX, 1.38 MPA WP
 4M OF 150MM DI WATER PIPE, PC 2.41 MPA WP
 2 - 150MM 45° DI BENDS
 CONNECT USING NECESSARY FITTINGS

ALL WATER LINES OWNED BY DAVIDSON WATER INC.

PROP. 1 - RELOCATE EXISTING WATER METER
 1 - 200MM X 20MM TAPPING SADDLE
 1 - 20MM CORPORATION STOP
 4M OF 20MM COPPER WATER PIPE, TYPE K
 CONNECT USING NECESSARY FITTINGS

PROP. 1 - 200MM X 20MM TAPPING SADDLE
 1 - 20MM CORPORATION STOP
 3M OF 20MM COPPER WATER PIPE, TYPE K
 CONNECT USING NECESSARY FITTINGS



-DRI-
 PI Sta. 10+32.300
 $\Delta = 90^{\circ} 19' 38.0''$ (LT)
 L = 31,530
 T = 20,115
 R = 20,000

-L- PIs Sta. 62+52.675 Os = 2° 56' 47.9" Ls = 90,000 LT = 60,008 ST = 30,008	-L- PI Sta. 62+94.337 $\Delta = 1^{\circ} 31' 41.9''$ (LT) L = 23,340 T = 11,671 R = 875,000 S.E. = 0.05	-L- PIs Sta. 63+36.014 Os = 2° 56' 47.9" Ls = 90,000 LT = 60,008 ST = 30,008
---	--	---

NOTES:
 (1) SEE SHEETS 2-E & 2-F FOR DRAINAGE DETAILS
 (2) SEE SHEET 33 FOR -L- PROFILE
 (3) SEE SHEET 44 FOR -DRI- PROFILE

3/16/09 - 2568b-temp.dwg - UC-7
 03/03/2004