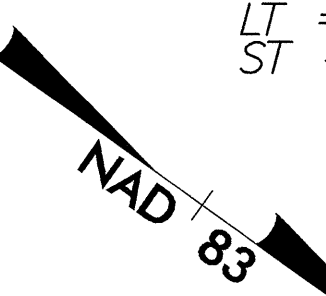


UTILITIES BY OTHERS

NOTE:
 ALL PROPOSED UTILITY WORK
 SHOWN ON THIS SHEET WILL
 BE DONE BY OTHERS

-L-	-LTLNI-	-RTLNI-
Pls Sta. 25+59.134	Pls Sta. 25+80.786	Pls Sta. 25+37.483
Os = 2' 56' 47.9"	Os = 2' 56' 47.9"	Os = 2' 56' 47.9"
Ls = 90.000	Ls = 90.000	Ls = 90.000
LT = 60.008	LT = 60.008	LT = 60.008
ST = 30.008	ST = 30.008	ST = 30.008



BEGIN PROJECT R-2568B
-L- STA. 23 + 20.000

DATUM DESCRIPTION

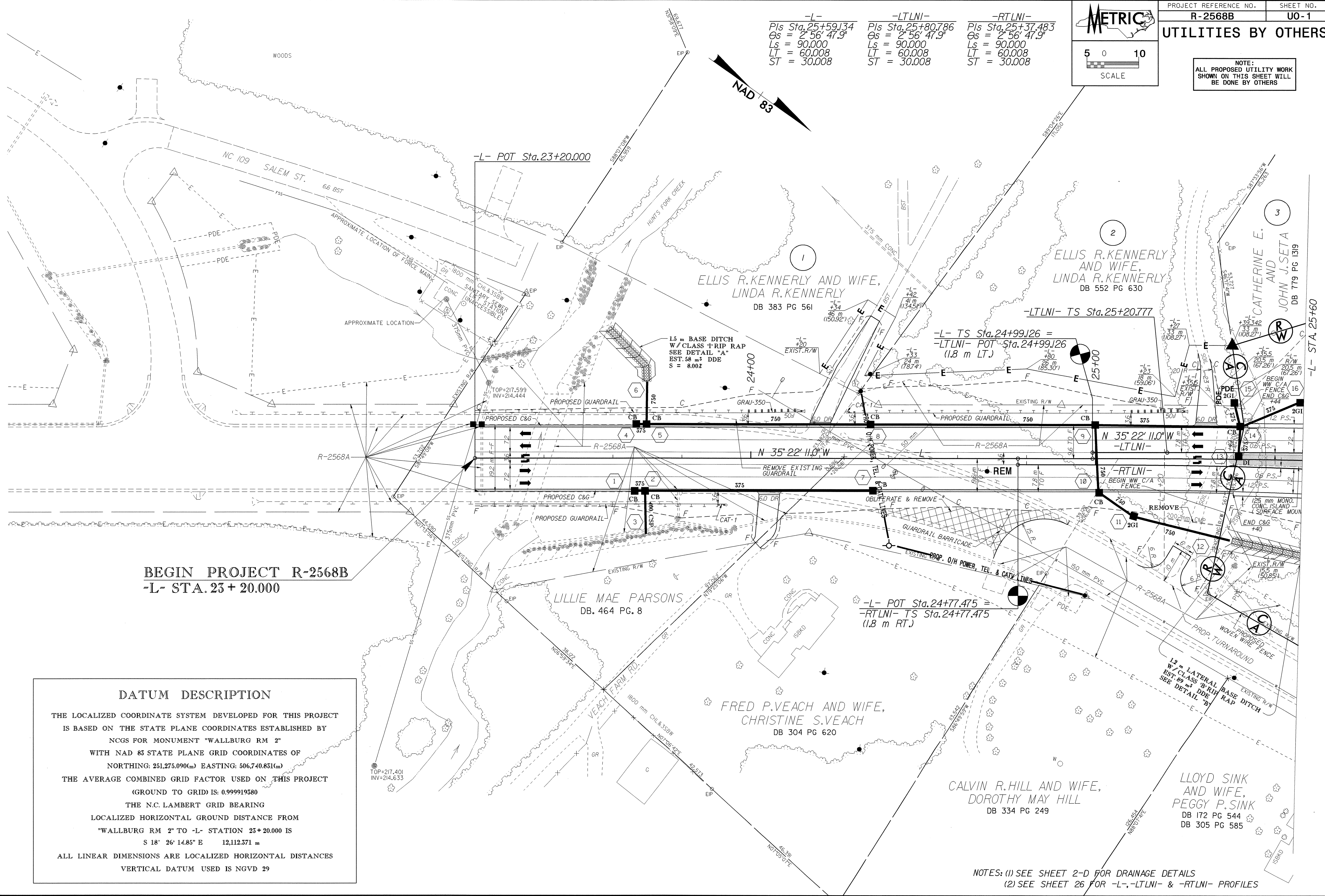
THE LOCALIZED COORDINATE SYSTEM DEVELOPED FOR THIS PROJECT IS BASED ON THE STATE PLANE COORDINATES ESTABLISHED BY NCGS FOR MONUMENT "WALLBURG RM 2" WITH NAD 83 STATE PLANE GRID COORDINATES OF NORTHING: 251,275.090(m) EASTING: 506,740.851(m)

THE AVERAGE COMBINED GRID FACTOR USED ON THIS PROJECT (GROUND TO GRID) IS: 0.999919380

THE N.C. LAMBERT GRID BEARING LOCALIZED HORIZONTAL GROUND DISTANCE FROM "WALLBURG RM 2" TO -L- STATION 23+20.000 IS
 S 18° 26' 14.85" E 12,112.371 m

ALL LINEAR DIMENSIONS ARE LOCALIZED HORIZONTAL DISTANCES
 VERTICAL DATUM USED IS NGVD 29

NOTES: (1) SEE SHEET 2-D FOR DRAINAGE DETAILS
 (2) SEE SHEET 26 FOR -L-, -LTLNI- & -RTLNI- PROFILES



04257
 IS-AUS-2004_U001.dgn
 R:\Projects\2568B\2568B.dwg
 11/15/04 10:52:22 AM
 mbright