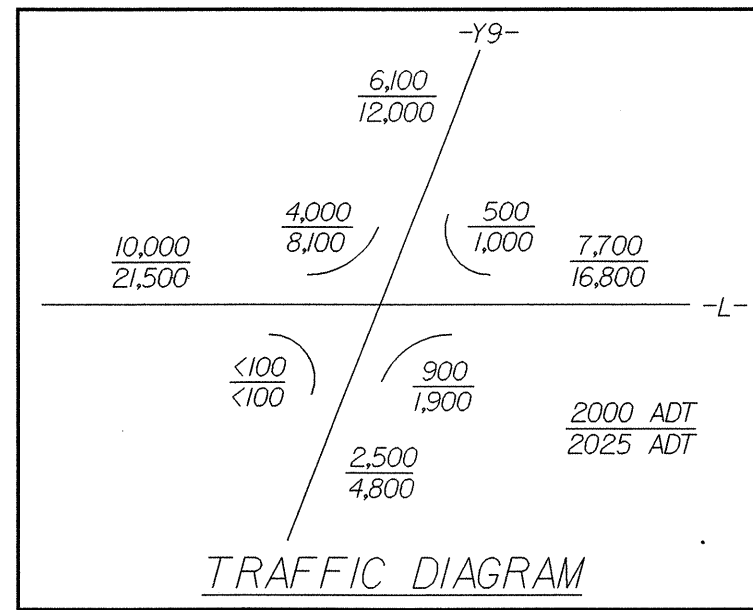
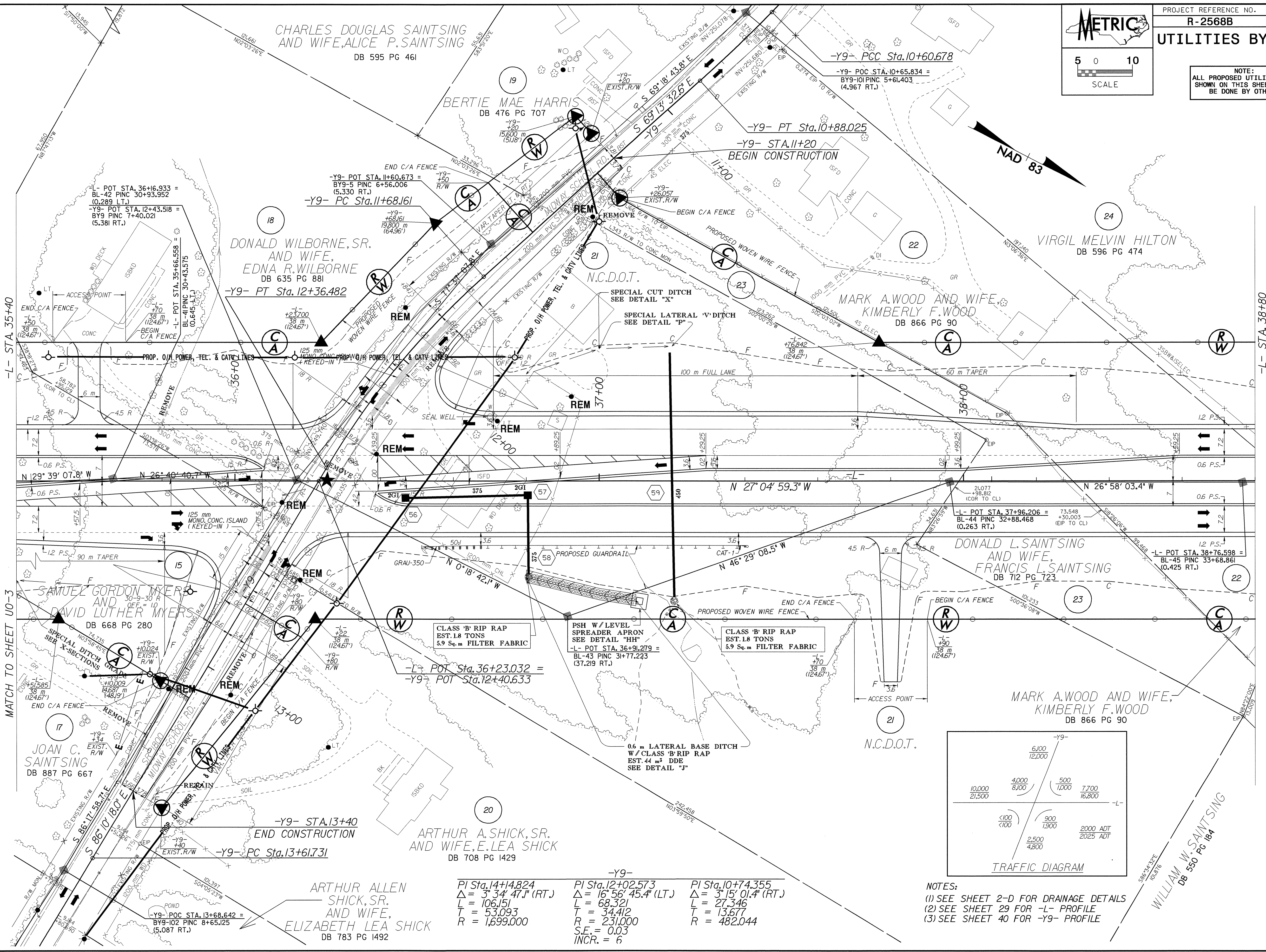


NOTE:  
 ALL PROPOSED UTILITY WORK  
 SHOWN ON THIS SHEET WILL  
 BE DONE BY OTHERS



NOTES:  
 (1) SEE SHEET 2-D FOR DRAINAGE DETAILS  
 (2) SEE SHEET 29 FOR -L- PROFILE  
 (3) SEE SHEET 40 FOR -Y9- PROFILE

PI Sta.14+14.824 $\Delta = 3^{\circ} 34' 47.1''$ (RT.) $L = 106.151$ $T = 53.093$ $R = 1,699.000$	-Y9- PI Sta.12+02.573 $\Delta = 16^{\circ} 56' 45.4''$ (LT.) $L = 68.321$ $T = 34.412$ $R = 231.000$ $S.E. = 0.03$ $INCR. = 6$	PI Sta.10+74.355 $\Delta = 3^{\circ} 15' 01.4''$ (RT.) $L = 27.346$ $T = 13.677$ $R = 482.044$
---	---	--

19-AUG-2004 10:57  
 R:\U11111\2568b\ut-08-1104.dgn  
 04252