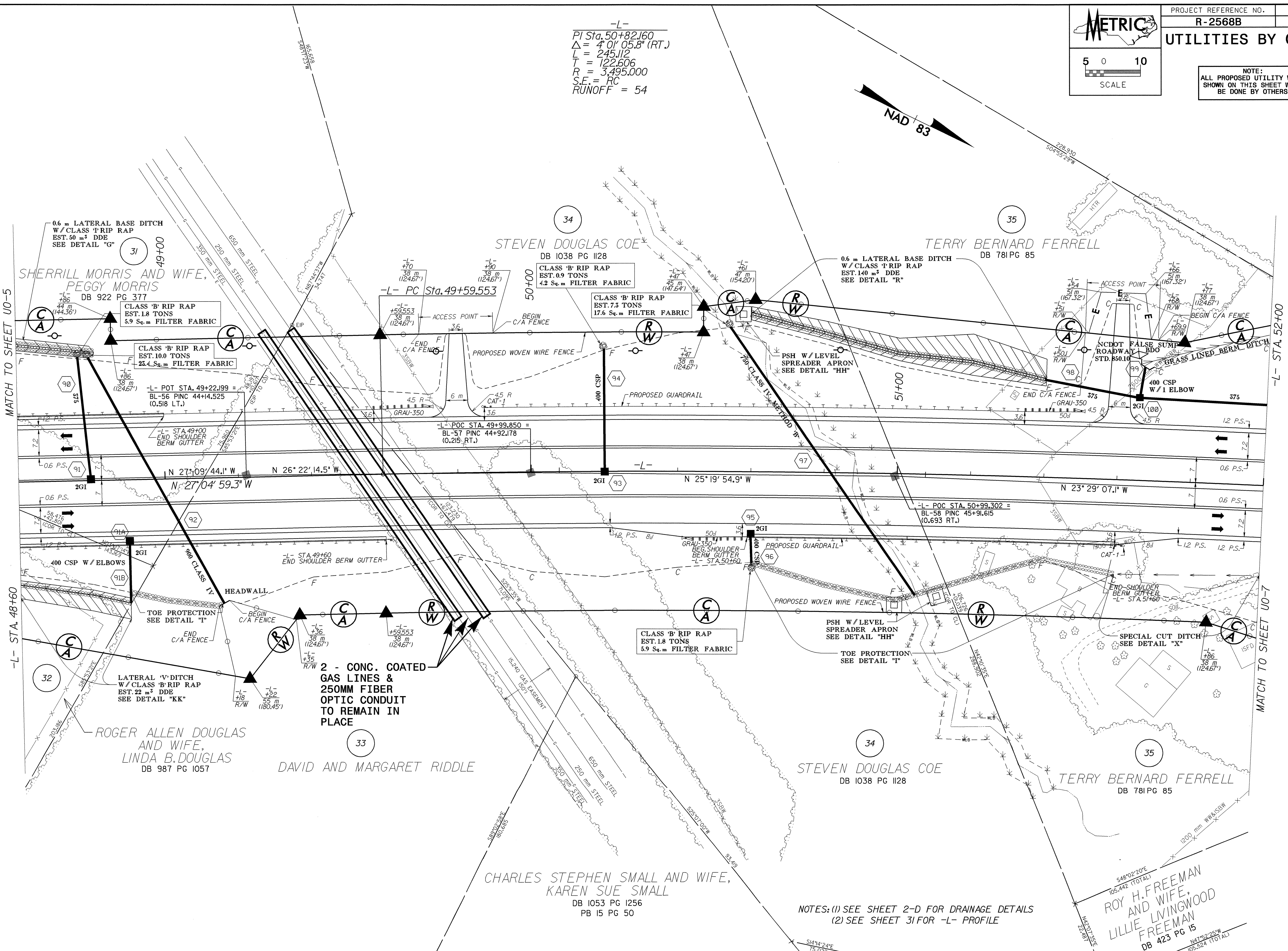
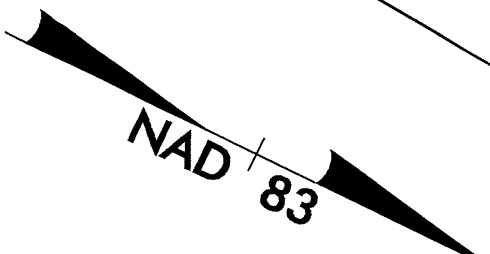


NOTE:
 ALL PROPOSED UTILITY WORK
 SHOWN ON THIS SHEET WILL
 BE DONE BY OTHERS

-L-
 PI Sta. 50+82.160
 $\Delta = 4' 01.058''$ (RT.)
 $L = 245.112$
 $T = 122.606$
 $R = 3,495.000$
 $S.E. = RC$
 RUNOFF = 54



NOTES: (1) SEE SHEET 2-D FOR DRAINAGE DETAILS
 (2) SEE SHEET 3I FOR -L- PROFILE

042592
 19-AUG-2004 09:57
 R:\U0\2568B\U0-6\2568B-U0-6-12-106-psh.dgn
 10/27/2004 10:52:24 AM
 10/27/2004 10:52:24 AM