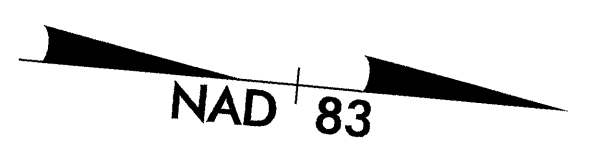
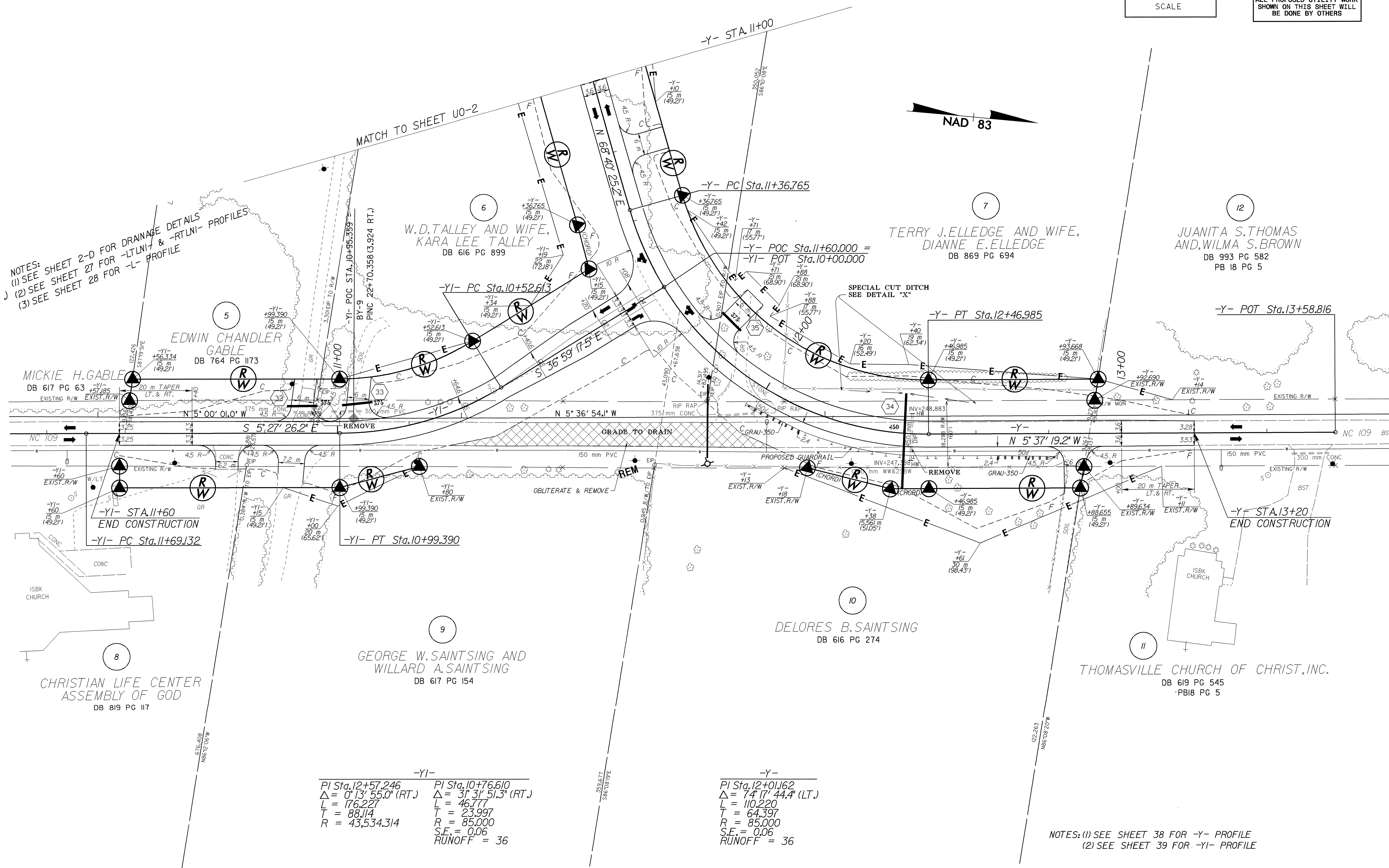


NOTE:
 ALL PROPOSED UTILITY WORK
 SHOWN ON THIS SHEET WILL
 BE DONE BY OTHERS



NOTES:
 (1) SEE SHEET 2-D FOR DRAINAGE DETAILS
 (2) SEE SHEET 27 FOR -LT/LN- & -RTL/N- PROFILES
 (3) SEE SHEET 28 FOR -L- PROFILE



EDWIN CHANDLER GABLE
 DB 764 PG 1173

W.D. TALLEY AND WIFE,
 KARA LEE TALLEY
 DB 616 PG 899

TERRY J. ELLEDGE AND WIFE,
 DIANNE E. ELLEDGE
 DB 869 PG 694

JUANITA S. THOMAS
 AND, WILMA S. BROWN
 DB 993 PG 582
 PB 18 PG 5

MICKIE H. GABLE
 DB 617 PG 63

CHRISTIAN LIFE CENTER
 ASSEMBLY OF GOD
 DB 819 PG 117

GEORGE W. SAINTSING AND
 WILLARD A. SAINTSING
 DB 617 PG 154

DELORES B. SAINTSING
 DB 616 PG 274

THOMASVILLE CHURCH OF CHRIST, INC.
 DB 619 PG 545
 PB18 PG 5

-YI-	
PI Sta. 12+57.246	PI Sta. 10+76.610
$\Delta = 0^\circ 13' 55.0''$ (RT.)	$\Delta = 3^\circ 31' 51.3''$ (RT.)
L = 176.227	L = 46.777
T = 88.114	T = 23.997
R = 43,534.314	R = 85.000
	S.E. = 0.06
	RUNOFF = 36

-Y-	
PI Sta. 12+01.162	
$\Delta = 74^\circ 17' 44.4''$ (LT.)	
L = 110.220	
T = 64.397	
R = 85.000	
S.E. = 0.06	
RUNOFF = 36	

NOTES: (1) SEE SHEET 38 FOR -Y- PROFILE
 (2) SEE SHEET 39 FOR -YI- PROFILE

042592

19-AUG-2004 11:02
 R:\Users\j... 2568b-ut-22_U015_psh.dgn