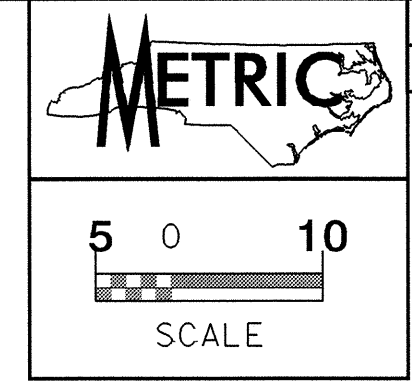


042597

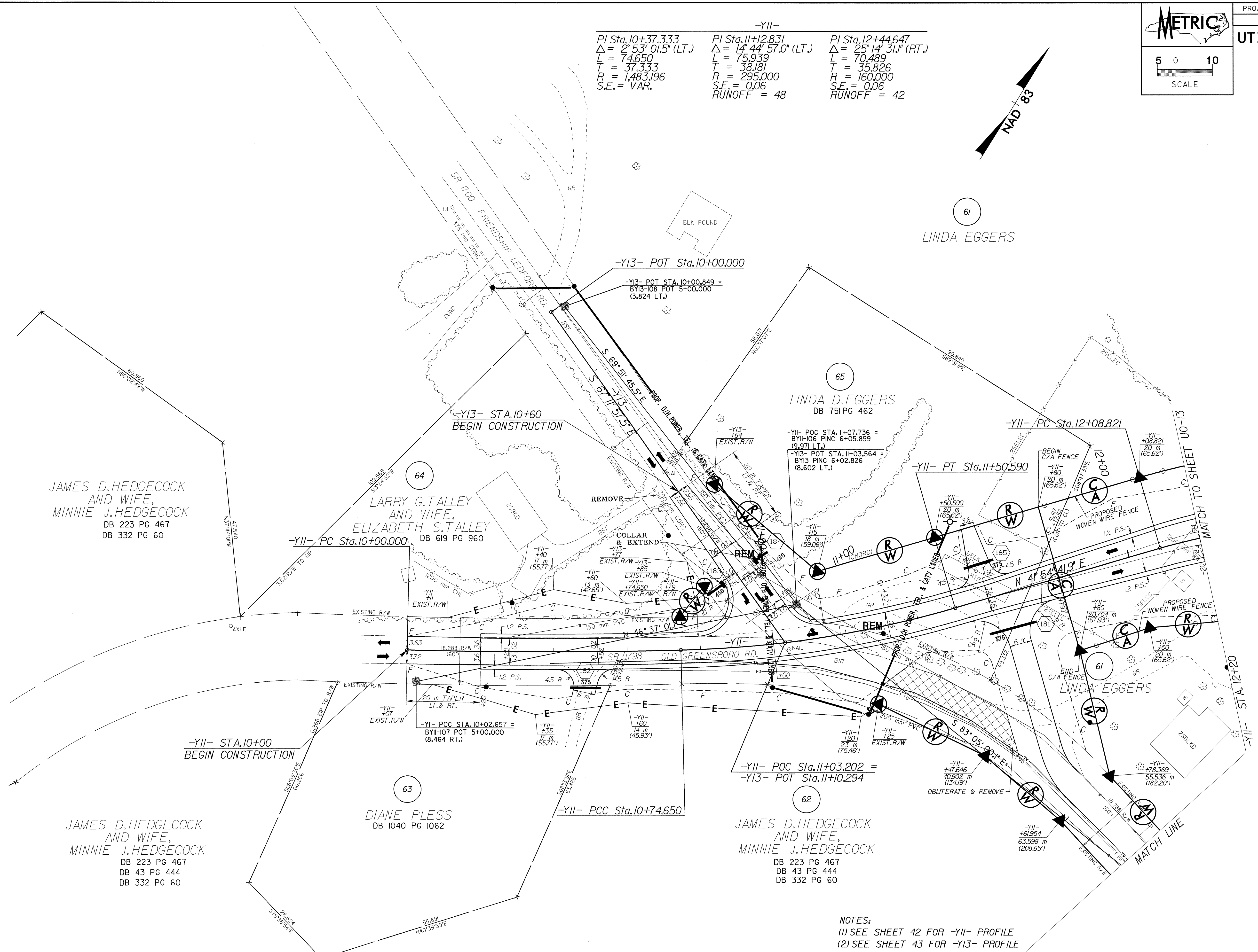
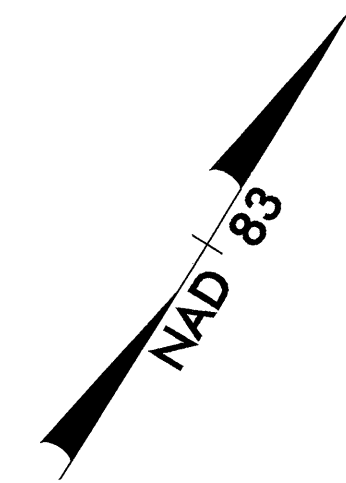


PROJECT REFERENCE NO. R-2568B SHEET NO. U0-16

UTILITIES BY OTHERS

NOTE: ALL PROPOSED UTILITY WORK SHOWN ON THIS SHEET WILL BE DONE BY OTHERS

-YII-		
PI Sta. 10+37.333	PI Sta. 11+12.831	PI Sta. 12+44.647
$\Delta = 2^\circ 53' 01.5''$ (LT.)	$\Delta = 14^\circ 44' 57.0''$ (LT.)	$\Delta = 25^\circ 14' 31.0''$ (RT.)
L = 74.650	L = 75.939	L = 70.489
T = 37.333	T = 38.181	T = 35.826
R = 1,483.196	R = 295.000	R = 160.000
S.E. = VAR.	S.E. = 0.06	S.E. = 0.06
	RUNOFF = 48	RUNOFF = 42



JAMES D. HEDGECKOCK
AND WIFE,
MINNIE J. HEDGECKOCK
DB 223 PG 467
DB 332 PG 60

LARRY G. TALLEY
AND WIFE,
ELIZABETH S. TALLEY
DB 619 PG 960

LINDA D. EGGERS
DB 751 PG 462

DIANE PLESS
DB 1040 PG 1062

JAMES D. HEDGECKOCK
AND WIFE,
MINNIE J. HEDGECKOCK
DB 223 PG 467
DB 43 PG 444
DB 332 PG 60

JAMES D. HEDGECKOCK
AND WIFE,
MINNIE J. HEDGECKOCK
DB 223 PG 467
DB 43 PG 444
DB 332 PG 60

NOTES:
(1) SEE SHEET 42 FOR -YII- PROFILE
(2) SEE SHEET 43 FOR -Y13- PROFILE

19-AUG-2004 10:02 AM
 R:\u11-11-04\2568b-ut-23_U016_psh.dgn
 mbr:shg
 18521221