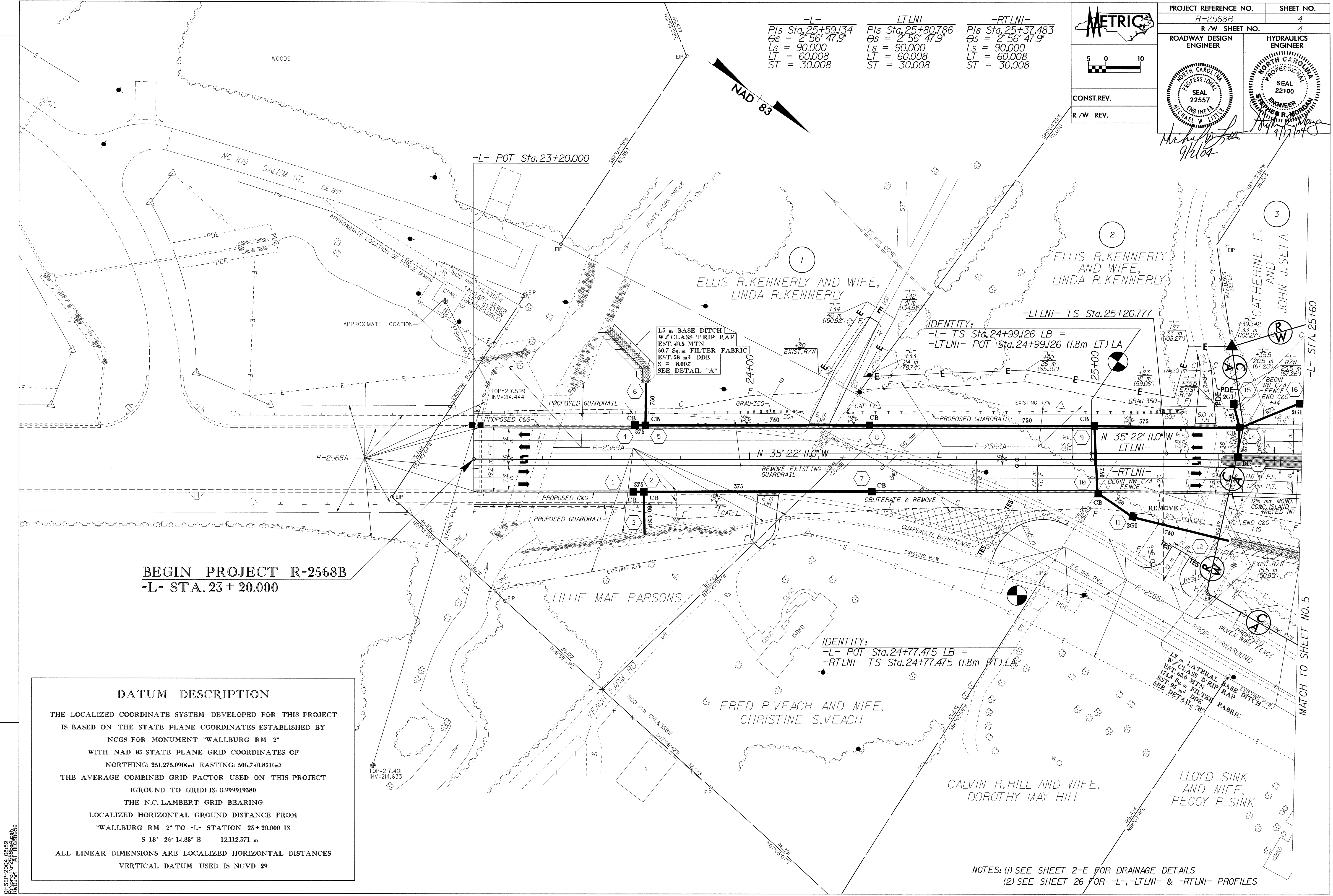
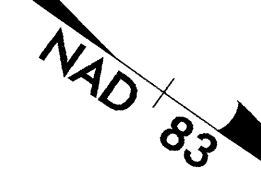


PROJECT REFERENCE NO. R-2568B	SHEET NO. 4
R/W SHEET NO. 4	
ROADWAY DESIGN ENGINEER	HYDRAULICS ENGINEER
CONST. REV.	
R/W REV.	

-L-	-LTLNI-	-RTLNI-
PIs Sta. 25+59.134	PIs Sta. 25+80.786	PIs Sta. 25+37.483
Os = 2° 56' 47.9"	Os = 2° 56' 47.9"	Os = 2° 56' 47.9"
Ls = 90.000	Ls = 90.000	Ls = 90.000
LT = 60.008	LT = 60.008	LT = 60.008
ST = 30.008	ST = 30.008	ST = 30.008



BEGIN PROJECT R-2568B
-L- STA. 23 + 20.000

DATUM DESCRIPTION

THE LOCALIZED COORDINATE SYSTEM DEVELOPED FOR THIS PROJECT IS BASED ON THE STATE PLANE COORDINATES ESTABLISHED BY NCGS FOR MONUMENT "WALLBURG RM 2" WITH NAD 83 STATE PLANE GRID COORDINATES OF NORTHING: 251,275.090(m) EASTING: 506,740.831(m)

THE AVERAGE COMBINED GRID FACTOR USED ON THIS PROJECT (GROUND TO GRID) IS: 0.999919380

THE N.C. LAMBERT GRID BEARING LOCALIZED HORIZONTAL GROUND DISTANCE FROM "WALLBURG RM 2" TO -L- STATION 23+20.000 IS
S 18° 26' 14.85" E 12,112.371 m

ALL LINEAR DIMENSIONS ARE LOCALIZED HORIZONTAL DISTANCES
VERTICAL DATUM USED IS NGVD 29

NOTES: (1) SEE SHEET 2-E FOR DRAINAGE DETAILS
(2) SEE SHEET 26 FOR -L-, -LTLNI- & -RTLNI- PROFILES

REVISIONS

04 SEP 2004 08:49
 R:\PROJECTS\2568B\2568B.DWG
 R:\PROJECTS\2568B\2568B.DWG