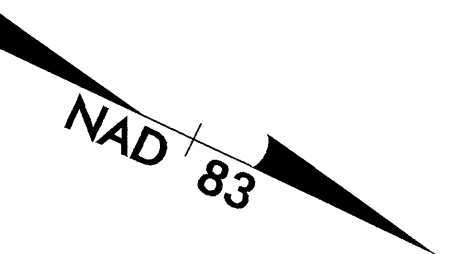


8/17/2008
02-SEP-2004 08:12
S:\Projects\25668B\Drawings\25668B.dwg
Author: RL

-LTLNI-
Pls Sta. 25+80.786 PI Sta. 26+73.115 Pls Sta. 27+65.250
Os = 2°56'47.9" Δ = 8°09'00.4" (RT.) Os = 2°56'47.9"
Ls = 90.000 L = 124.465 Ls = 90.000
LT = 60.008 T = 62.338 LT = 60.008
ST = 30.008 R = 875.000 ST = 30.008
S.E. = 0.05

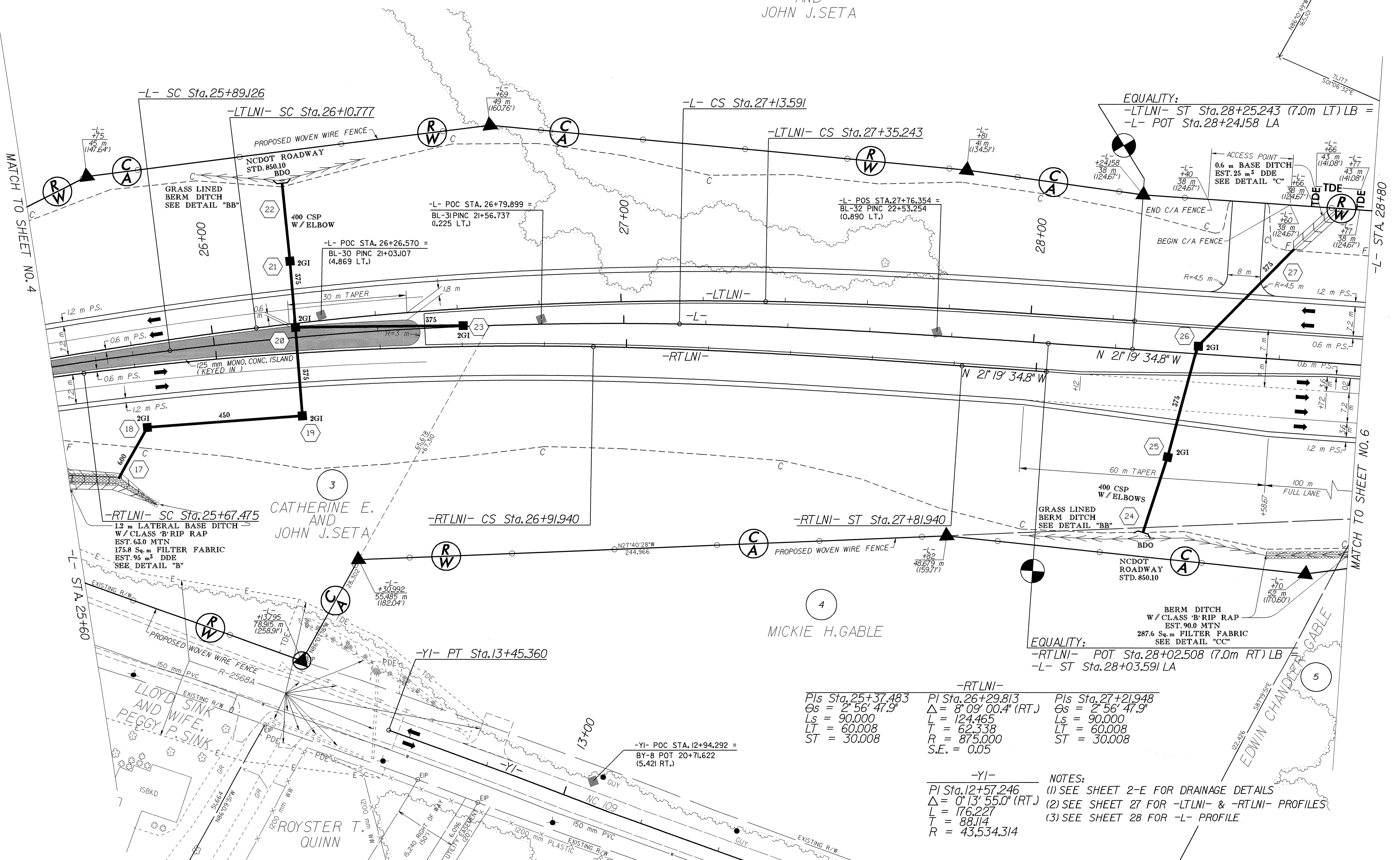
-L-
Pls Sta. 25+59.134 PI Sta. 26+51.464 Pls Sta. 27+43.599
Os = 2°56'47.9" Δ = 8°09'00.4" (RT.) Os = 2°56'47.9"
Ls = 90.000 L = 124.465 Ls = 90.000
LT = 60.008 T = 62.338 LT = 60.008
ST = 30.008 R = 875.000 ST = 30.008



	PROJECT REFERENCE NO.	SHEET NO.
	R-2568B	5
ROADWAY DESIGN ENGINEER	R/W SHEET NO.	5
	HYDRAULICS ENGINEER	
CONST. REV.	SEAL 22557	SEAL 22100
R/W REV.		

Professional Engineer seals for Michael W. Little and Stephen R. Morgan, dated 9/2/04.

3
CATHERINE E. AND JOHN J. SETA



REVISIONS

-RTLNI-
Pls Sta. 25+37.483 PI Sta. 26+29.813 Pls Sta. 27+21.948
Os = 2°56'47.9" Δ = 8°09'00.4" (RT.) Os = 2°56'47.9"
Ls = 90.000 L = 124.465 Ls = 90.000
LT = 60.008 T = 62.338 LT = 60.008
ST = 30.008 R = 875.000 ST = 30.008
S.E. = 0.05

-YI-
PI Sta. 12+57.246
Δ = 0°13'55.0" (RT.)
L = 176.227
T = 88.114
R = 43,534.314

- NOTES:
(1) SEE SHEET 2-E FOR DRAINAGE DETAILS
(2) SEE SHEET 27 FOR -LTLNI- & -RTLNI- PROFILES
(3) SEE SHEET 28 FOR -L- PROFILE

MATCH TO SHEET NO. 4

MATCH TO SHEET NO. 6

MATCH TO SHEET NO. 5