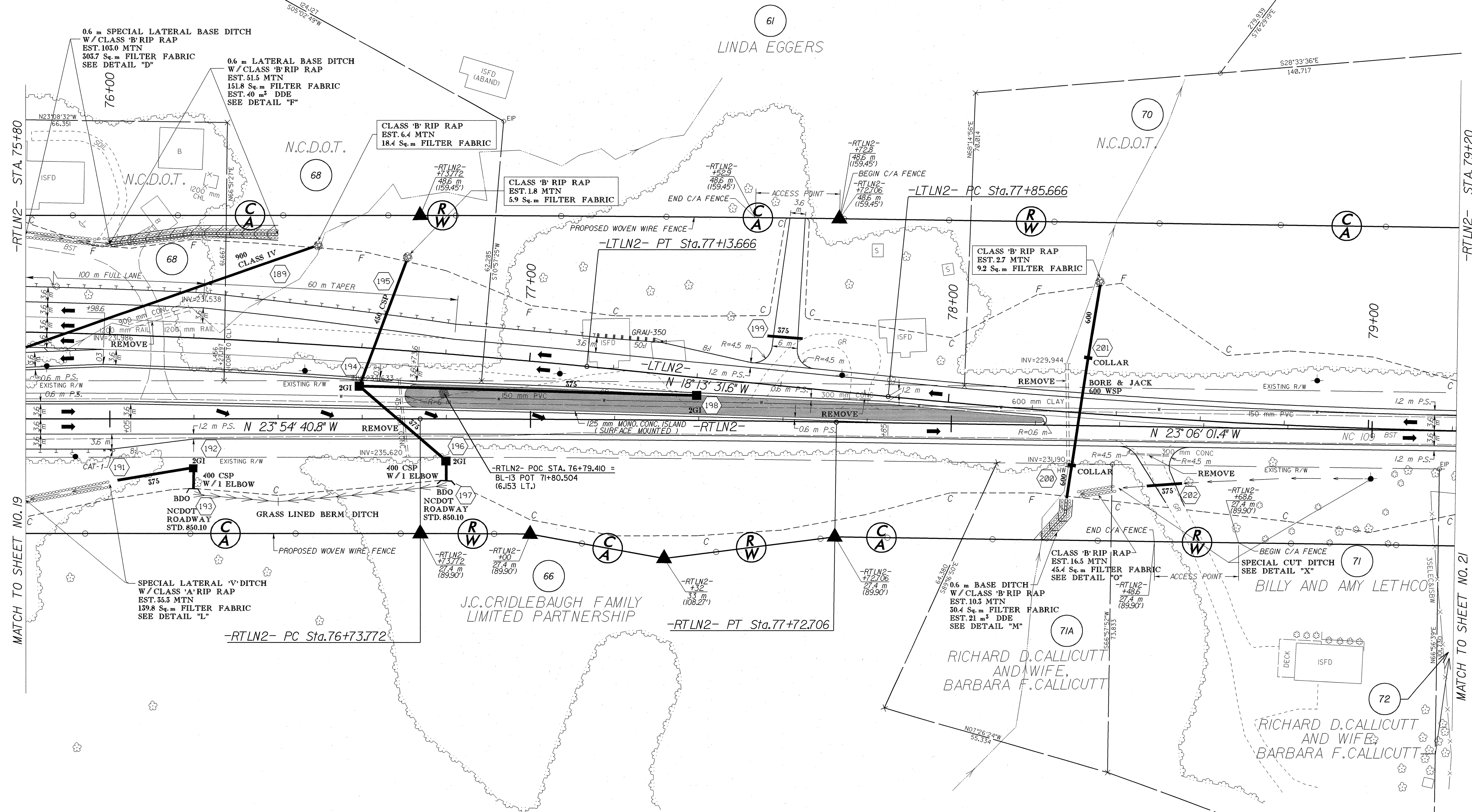
 CONST. REV. R/W REV.	PROJECT REFERENCE NO. R-2568B	SHEET NO. 20
	R/W SHEET NO. 20	ROADWAY DESIGN ENGINEER <i>Michael W. Little</i>
	HYDRAULICS ENGINEER <i>Stephen R. Morgan</i>	

-LTLN2-
 PI Sta. 76+26.904 PI Sta. 78+60.159
 $\Delta = 5^{\circ} 41' 09.2''$ (RT.) $\Delta = 4^{\circ} 52' 29.8''$ (LT.)
 $L = 173.666$ $L = 148.897$
 $T = 86.904$ $T = 74.493$
 $R = 1,750,000$ $R = 1,750,000$
 $S.E. = 0.03$ $S.E. = 0.03$
 RUNOFF = 54 RUNOFF = 54



-RTLN2-
 PI Sta. 77+23.240
 $\Delta = 0^{\circ} 48' 39.4''$ (RT.)
 $L = 98.934$
 $T = 49.468$
 $R = 6,990,000$

NOTES:
 (1) SEE SHEET 2-E FOR DRAINAGE DETAILS
 (2) SEE SHEET 36 FOR -LTLN2- & -RTLN2- PROFILES

REVISIONS

8/17/09

02-SEP-2004 08:35
 R:\PROJECTS\2004\2568B\2568B.DWG