



PROJECT REFERENCE NO. R-2568B SHEET NO. 21

R/W SHEET NO. 21

ROADWAY DESIGN ENGINEER

ENGINEER

SEAL 22557

ENGINEER

9/26/04

HYDRAULICS ENGINEER

ENGINEER

SEAL 22100

ENGINEER

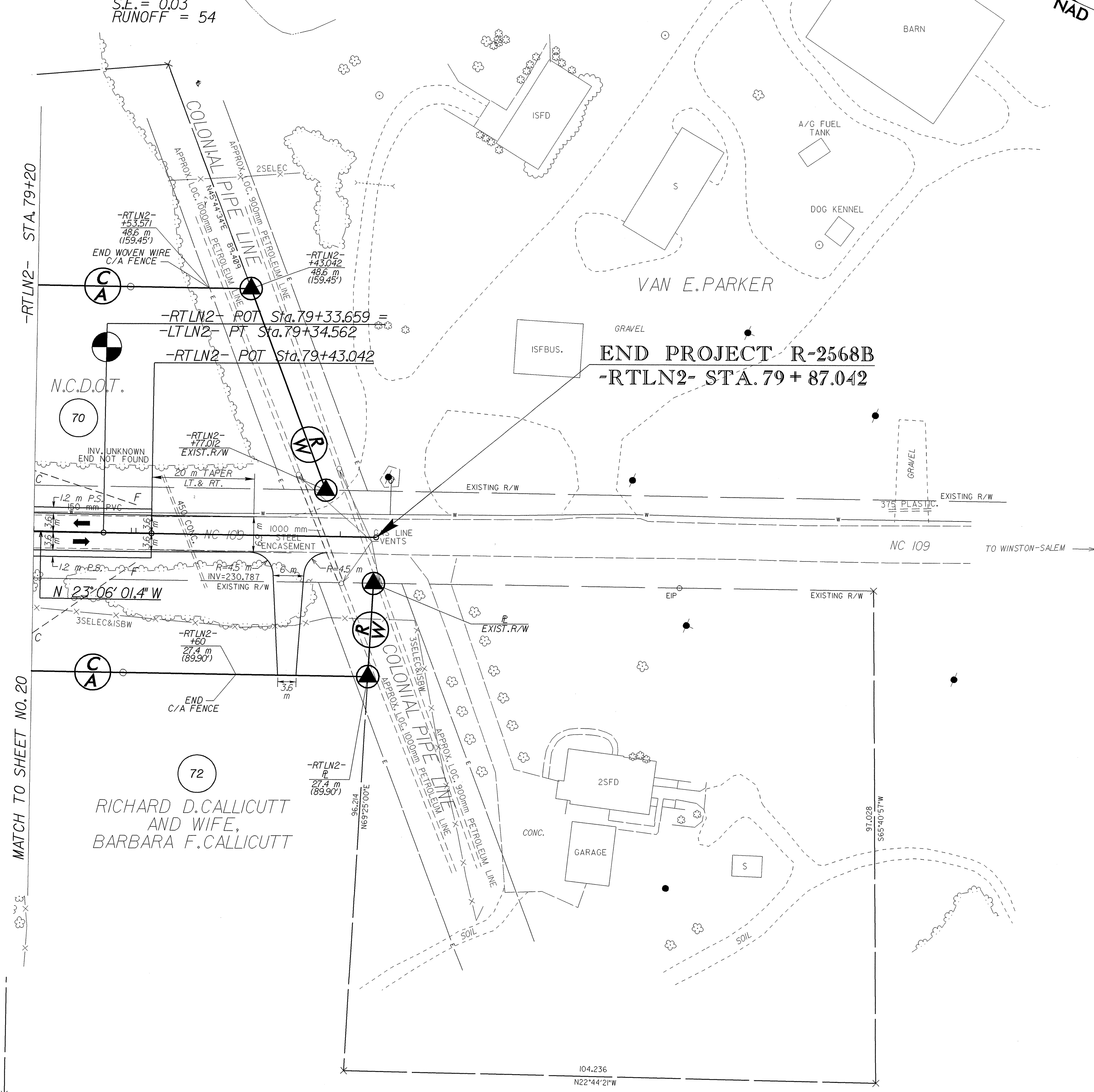
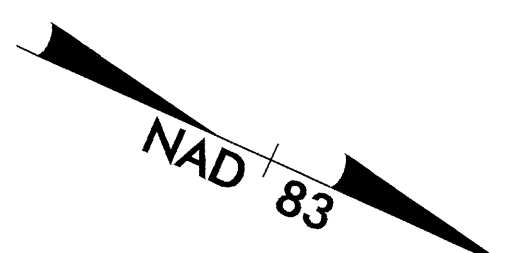
9/26/04



CONST. REV.

R/W REV.

-LTLN2-
PI Sta. 78+60.159
 $\Delta = 4' 52'' 29.8''$ (LT.)
L = 148.897
T = 74.493
R = 1,750,000
S.E. = 0.03
RUNOFF = 54



END PROJECT R-2568B
-RTLNL2- STA. 79 + 87.042

RICHARD D. CALLICUTT
AND WIFE,
BARBARA F. CALLICUTT

MATCH TO SHEET NO. 20

REVISIONS

02-AUG-2004 07:11
B:\PROJECTS\2568B\21-RT\21-2453

NOTE: SEE SHEET 37 FOR -LTLN2- & -RTLNL2- PROFILES