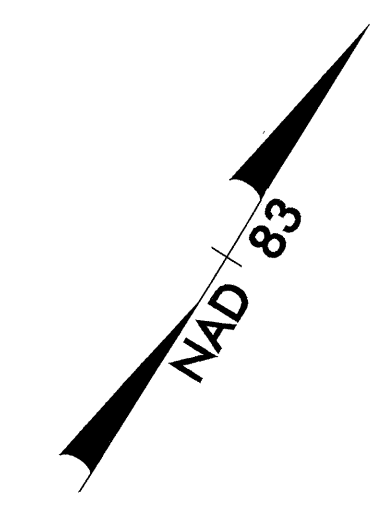
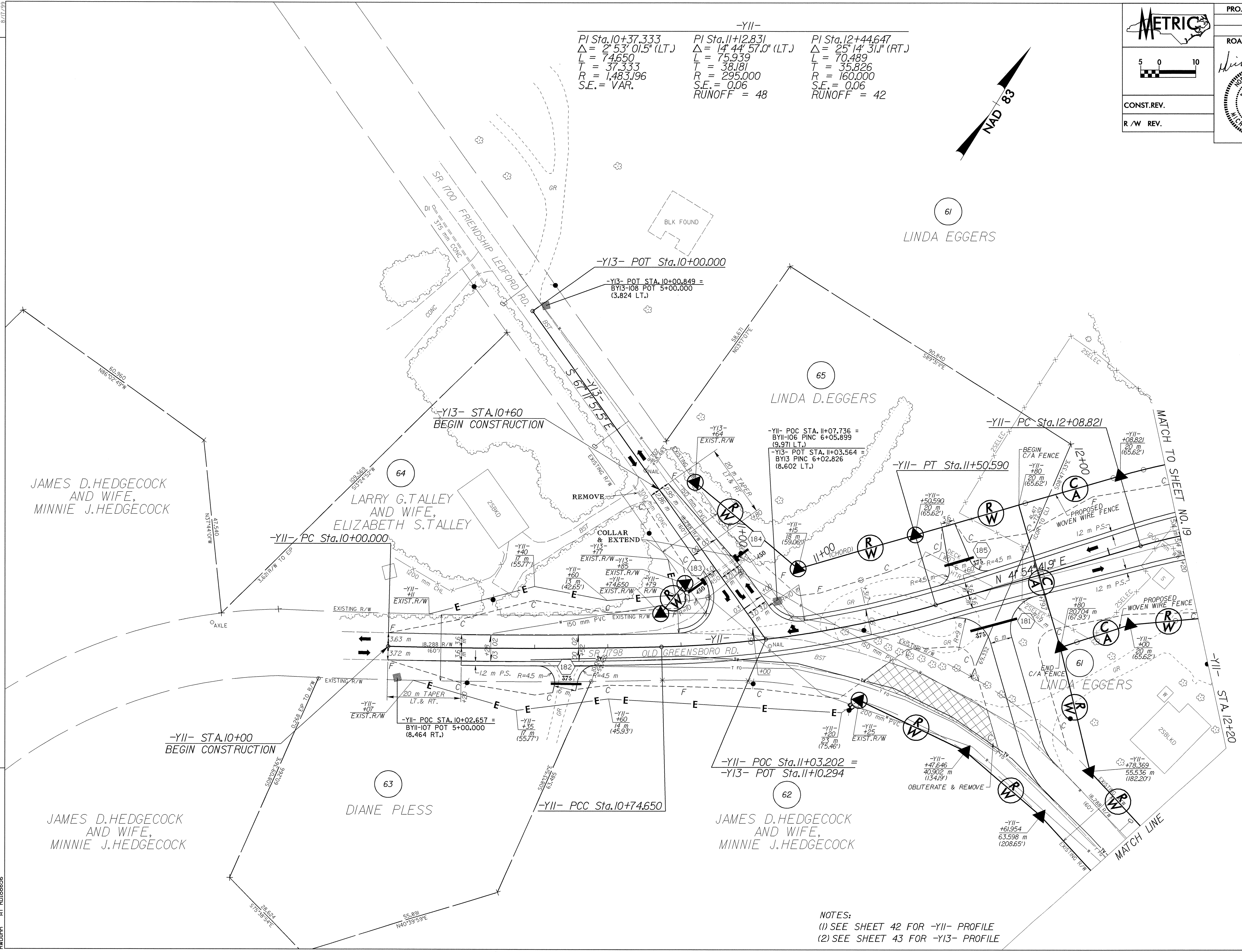


-YII-		
PI Sta. 10+37.333 $\Delta = 2^\circ 53' 01.5" (LT.)$ L = 74.650 T = 37.333 R = 1,483.196 S.E. = VAR.	PI Sta. 11+12.831 $\Delta = 14^\circ 44' 57.0" (LT.)$ L = 75.939 T = 38.181 R = 295.000 S.E. = 0.06 RUNOFF = 48	PI Sta. 12+44.647 $\Delta = 25^\circ 14' 31" (RT.)$ L = 70.489 T = 35.826 R = 160.000 S.E. = 0.06 RUNOFF = 42



REVISIONS



NOTES:
 (1) SEE SHEET 42 FOR -YII- PROFILE
 (2) SEE SHEET 43 FOR -YI3- PROFILE

8/17/99
 60.560
 N86.02.49W
 41.540
 N33.40.00W
 162.840
 N40.59.59E
 55.891
 24.624
 375.130
 24.624
 N40.59.59E
 55.891
 24.624
 375.130