

6/10/99

BM \*5 - RR SPIKE IN BASE OF 275 mm PECAN TREE  
R-2568A -L- 22+95.709,36.973 m LT.  
EL = 219.990

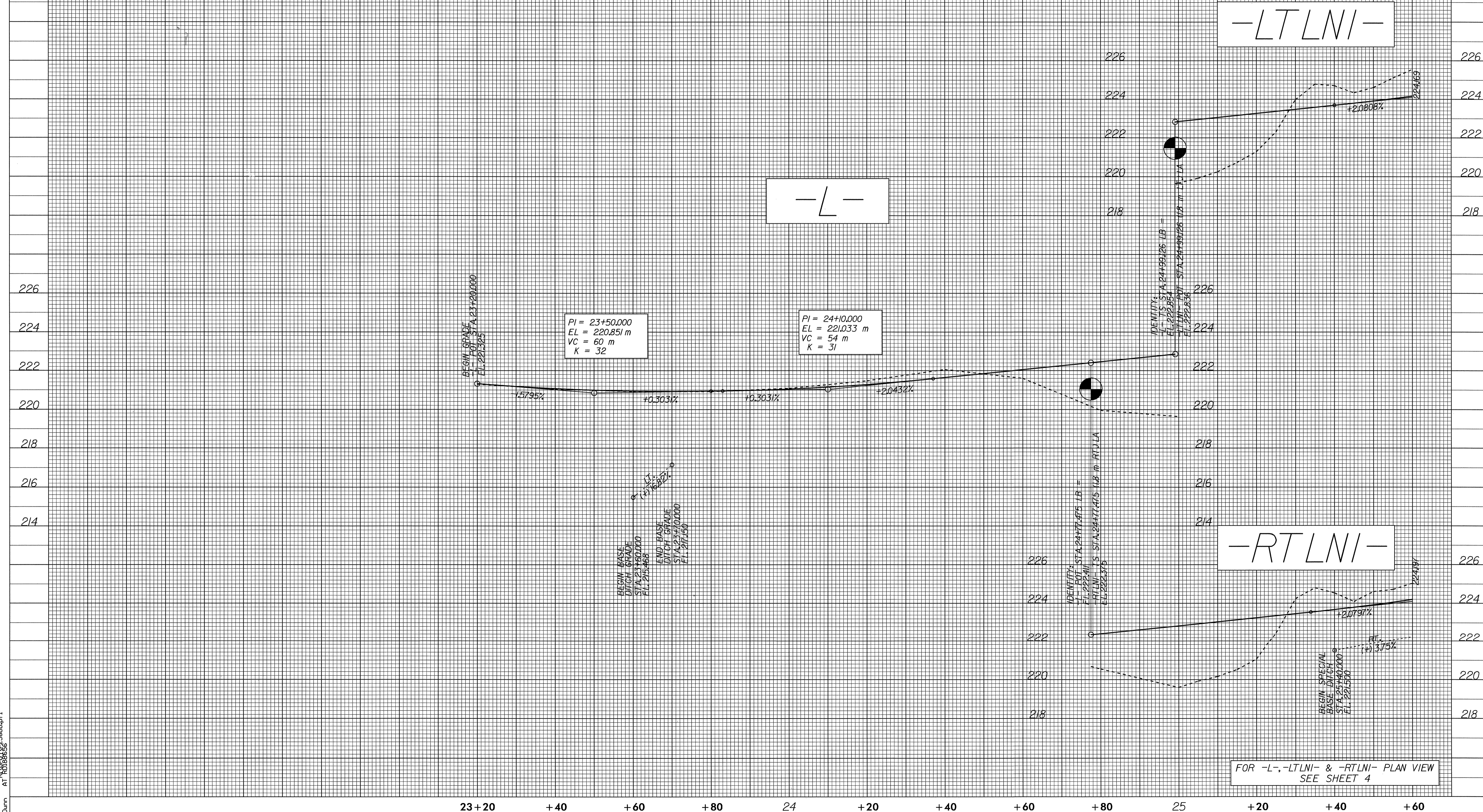
**METRIC**

5 0 10

CONST. REV.

R / W REV.

PROJECT REFERENCE NO. R-2568B ROADWAY DESIGN ENGINEER	SHEET NO. 26 HYDRAULICS ENGINEER
Michael W. Little 9/2/04	Stephen B. Woodrum 9/2/04



FOR -L-, -LTLNI- & -RTLNI- PLAN VIEW  
SEE SHEET 4

26-JUL-2004 15:24  
RWD:unn AT 10:08:56