

NOTE: SEE SHEET 26 FOR -L-, -LTLNI- & -RTLNI- PROFILES

-L-	-LTLNI-	-RTLNI-
Pls Sta. 25+59134	Pls Sta. 25+80786	Pls Sta. 25+37483
Gs = 2' 56' 47.9"	Gs = 2' 56' 47.9"	Gs = 2' 56' 47.9"
Ls = 90.000	Ls = 90.000	Ls = 90.000
LT = 60.008	LT = 60.008	LT = 60.008
ST = 30.008	ST = 30.008	ST = 30.008

**METRIC**

PROJECT REFERENCE NO. R-2568B SHEET NO. 4

R/W SHEET NO. 4

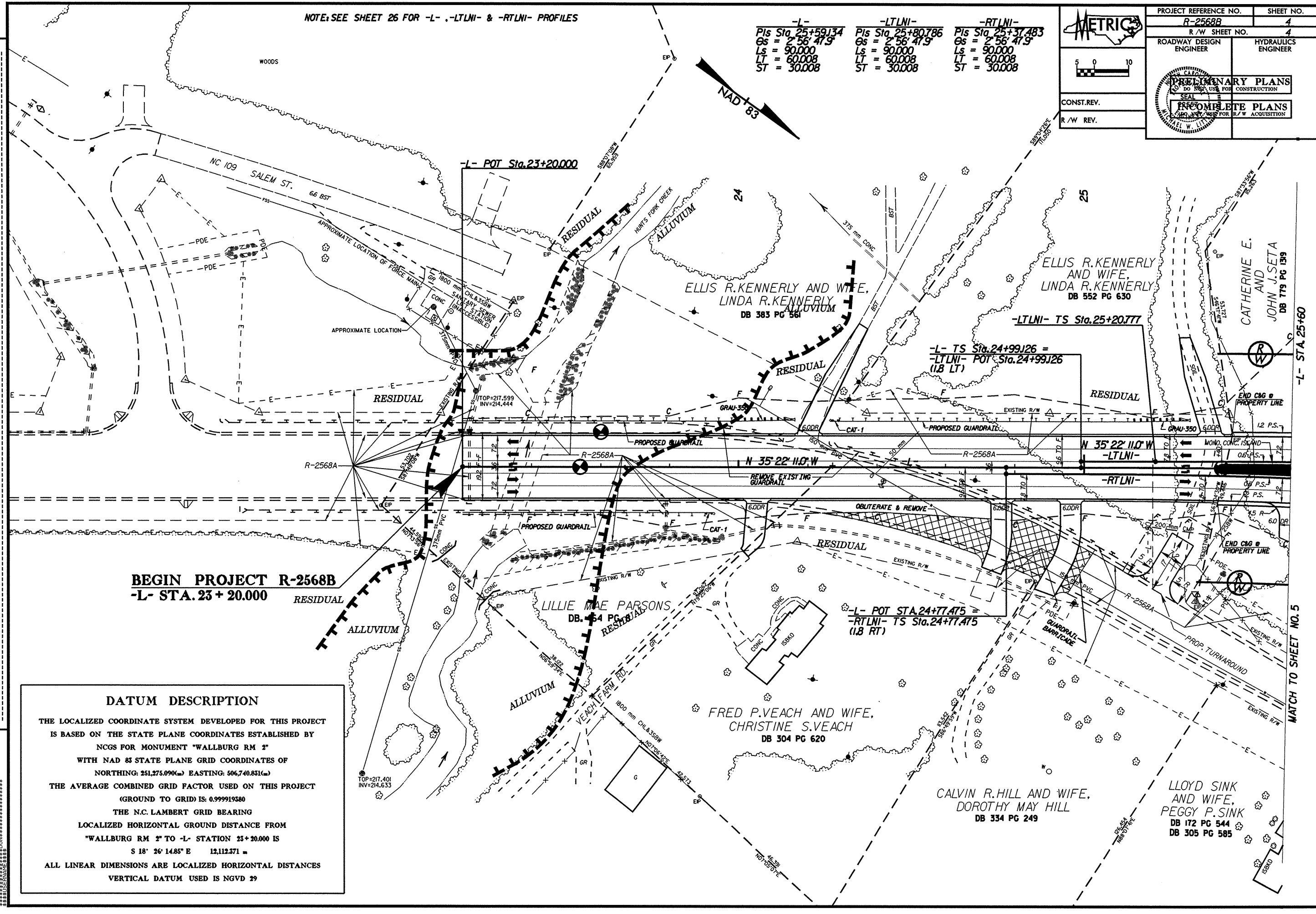
ROADWAY DESIGN ENGINEER HYDRAULICS ENGINEER

PRELIMINARY PLANS DO NOT USE FOR CONSTRUCTION

INCOMPLETE PLANS

CONST. REV. R/W REV.

REVISIONS



**DATUM DESCRIPTION**

THE LOCALIZED COORDINATE SYSTEM DEVELOPED FOR THIS PROJECT IS BASED ON THE STATE PLANE COORDINATES ESTABLISHED BY NCGS FOR MONUMENT "WALLBURG RM 2" WITH NAD 83 STATE PLANE GRID COORDINATES OF NORTHING: 251,275.090(m) EASTING: 506,740.831(m)

THE AVERAGE COMBINED GRID FACTOR USED ON THIS PROJECT (GROUND TO GRID) IS: 0.999919380

THE N.C. LAMBERT GRID BEARING LOCALIZED HORIZONTAL GROUND DISTANCE FROM "WALLBURG RM 2" TO -L- STATION 23+20.000 IS S 18° 26' 14.85" E 12,112.371 m

ALL LINEAR DIMENSIONS ARE LOCALIZED HORIZONTAL DISTANCES

VERTICAL DATUM USED IS NGVD 29

MATCH TO SHEET NO. 5

\*\*\*\*\*SYSTEMTIME\*\*\*\*\*