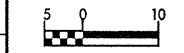


BM #11 - RR SPIKE IN 12' RED OAK
-BL. 28+95, 33.7 m LT.
EL. = 250.357



PROJECT REFERENCE NO. SHEET NO.

R-2568B 38
ROADWAY DESIGN ENGINEER HYDRAULICS ENGINEER

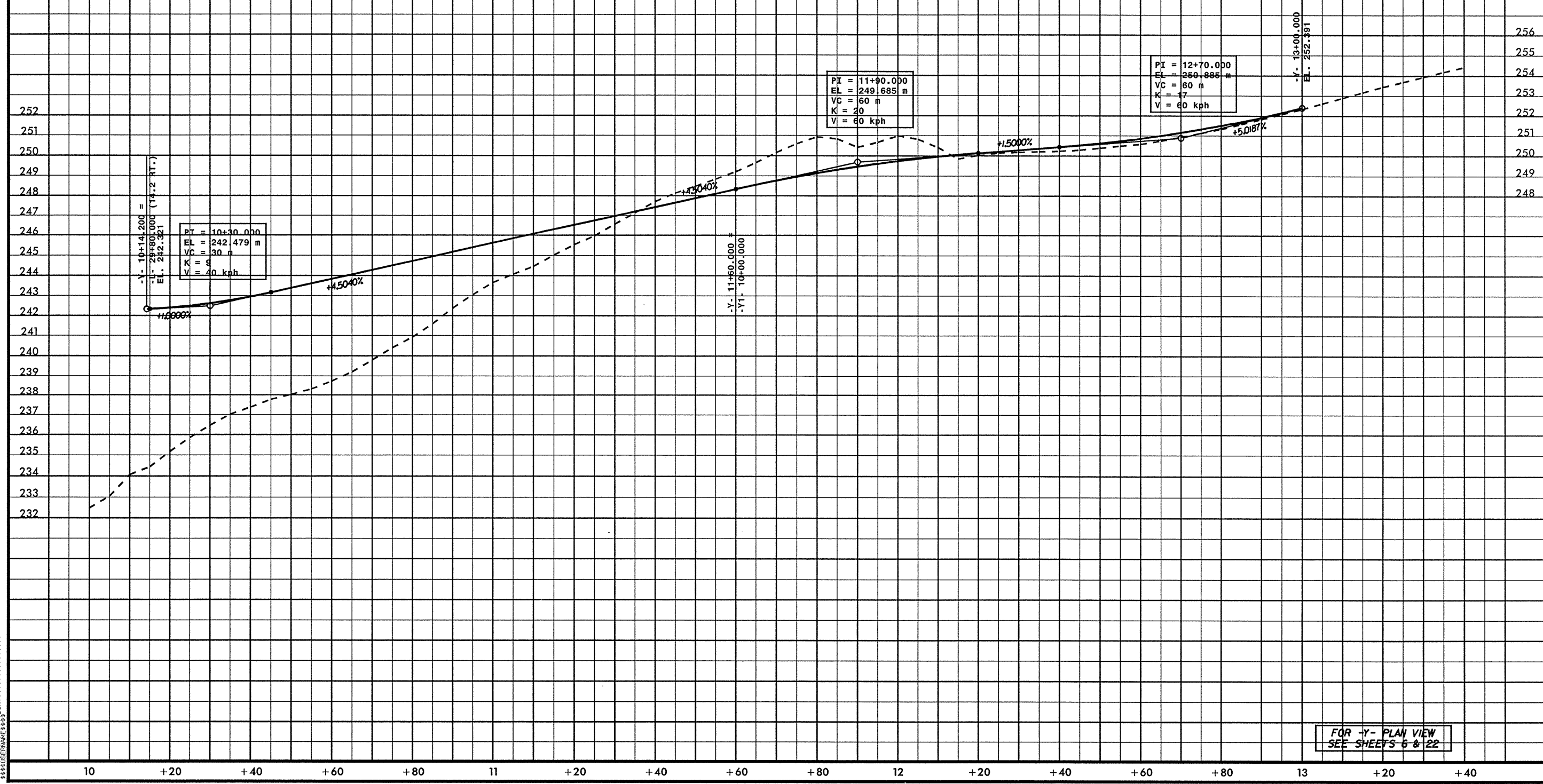


PRELIMINARY PLANS
NOT FOR CONSTRUCTION
INCOMPLETE PLANS
NOT FOR R/W ACQUISITION

CONST. REV.

R/W REV.

-Y-



FOR -Y- PLAN VIEW
SEE SHEETS 6 & 22

6/10/08
***** SYSTEMS ENGINEERING *****
***** CONSULTING *****
***** ENGINEERING *****
***** SERVICES *****