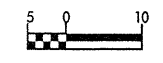


BM #1 - RR SPIKE IN 12" RED OAK  
 -BL+ 28+95, 33.7 m LT.  
 EL. = 250.357

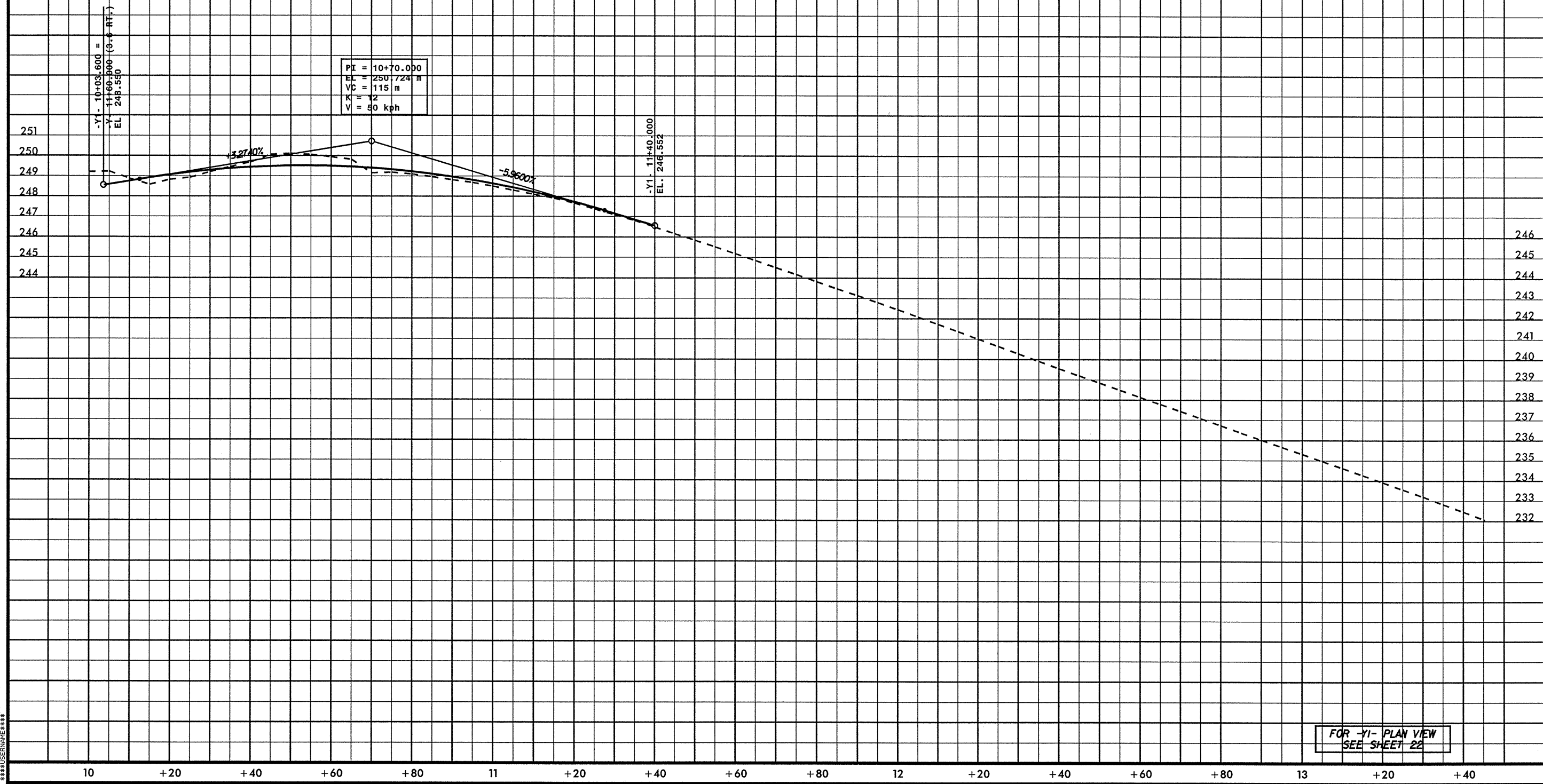
-Y1-



PROJECT REFERENCE NO. R-2568B	SHEET NO. 39
ROADWAY DESIGN ENGINEER	HYDRAULICS ENGINEER
PRELIMINARY PLANS INCOMPLETE PLANS NOT TO BE USED FOR CONSTRUCTION NOT TO BE USED FOR R/W ACQUISITION	
ENGINEER MICHAEL W. LITTLE	



CONST. REV.  
 R / W REV.



FOR -Y1- PLAN VIEW  
 SEE SHEET 22

6/10/99  
 SYSTEMS ENGINEERING  
 CONSULTING  
 ENGINEERS  
 INC.