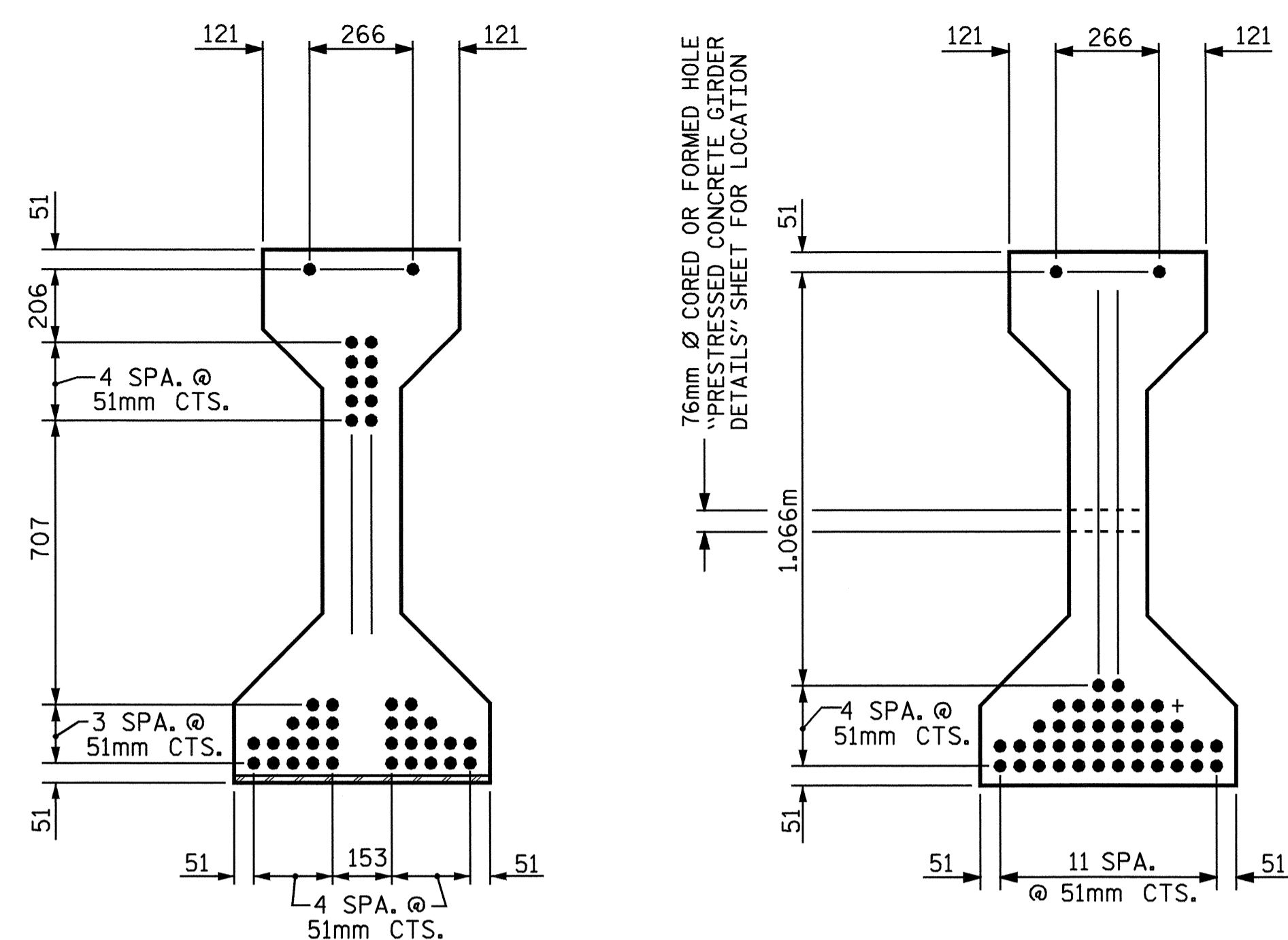


SECTION A-A

SECTION B-B

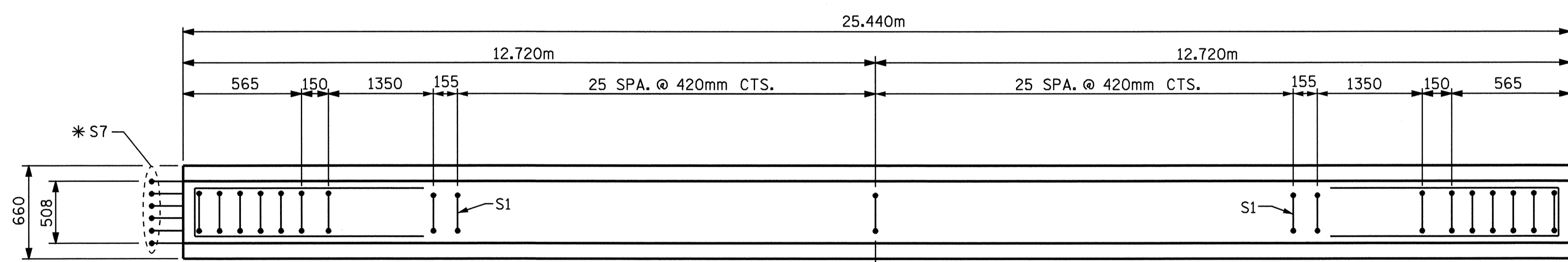
\* FOR S7 BARS, SEE  
DETAIL "A" OF  
PRESTRESSED  
CONCRETE GIRDER  
CONTINUOUS FOR LIVE  
LOAD DETAILS SHEET



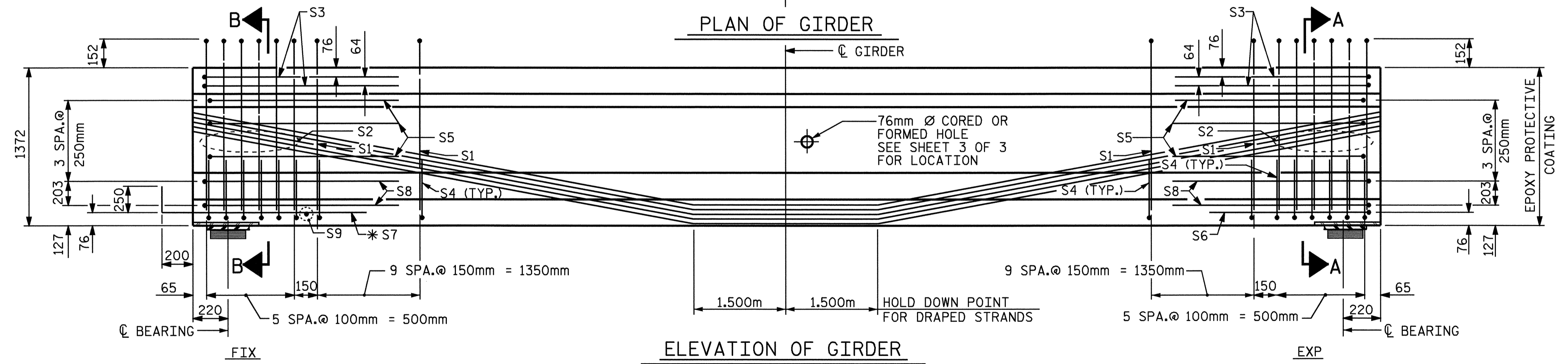
AT END OF GIRDER

AT C OF GIRDER

12.70mm Ø LOW RELAXATION STRAND LAYOUT



PLAN OF GIRDER



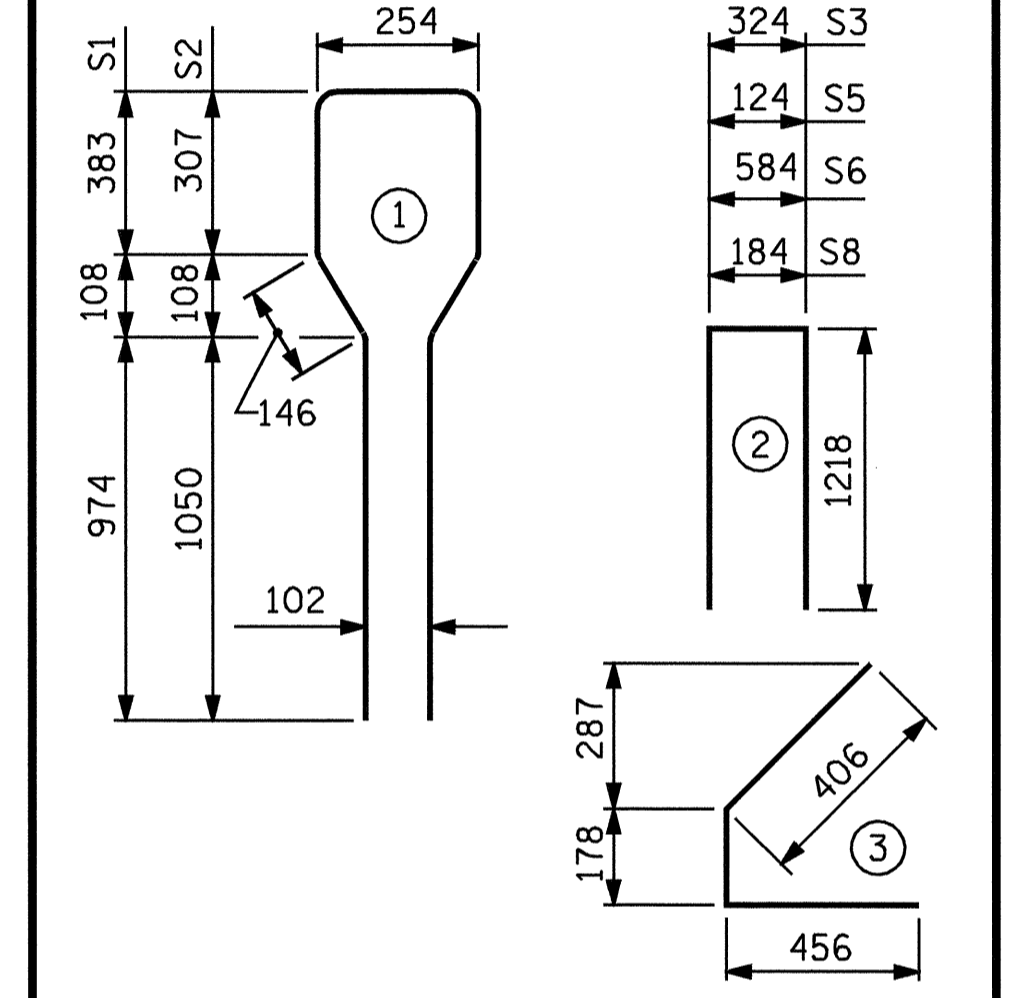
ELEVATION OF GIRDER

12.70mm Ø L. R. GRADE 270 STRANDS		
AREA (mm <sup>2</sup> )	ULTIMATE STRENGTH (KN PER STRAND)	APPLIED PRESTRESS (KN PER STRAND)
98.71	183.7	137.8

REINFORCING STEEL FOR ONE GIRDER						
BAR	NUMBER	SIZE	TYPE	LENGTH	WEIGHT	
S1	71	#13	1	3260	230	
S2	12	#19	1	3260	87	
S3	4	#13	2	2760	11	
S4	64	#13	3	1040	66	
S5	6	#13	2	2560	15	
S6	1	#13	2	3020	3	
* S7	6	#16	STR	1120	10	
S8	4	#13	2	2620	10	
S9	1	#10	STR	560	1	

\* NOTE: S7 BARS SHALL BE BENT BEFORE SHIPMENT. HEAT BENDING SHALL NOT BE ALLOWED.

BAR TYPES  
ALL BAR DIMENSIONS ARE OUT-TO-OUT



QUANTITIES FOR ONE GIRDER			
REINFORCING STEEL	44.8 MPa CONCRETE	12.70mm Ø L.R. STRANDS	
kg	m <sup>3</sup>	No.	
433	12.9	42	

GIRDERS REQUIRED		
NUMBER	LENGTH	TOTAL LENGTH
4	25.440m	101.760m

PROJECT NO. R-2568B  
DAVIDSON COUNTY  
STATION: 61+31.500 -L-

DEAD LOAD DEFLECTION TABLE FOR SPAN B													
12.70mm Ø LOW RELAXATION		GIRDERS 1 THRU 4											
TENTH POINTS		℄ BRG.	.1	.2	.3	.4	.5	.6	.7	.8	.9	℄ BRG.	
CAMBER ( GIRDER ALONE IN PLACE )		↑	0	.026	.048	.066	.077	.081	.077	.066	.048	.026	0
* DEFLECTION DUE TO SUPERIMPOSED D.L.		↓	0	.011	.021	.029	.034	.036	.034	.029	.021	.011	0
FINAL CAMBER		↑	0	15	27	37	43	45	43	37	27	15	0

\* INCLUDES FUTURE WEARING SURFACE  
ALL VALUES ARE SHOWN IN METERS, EXCEPT "FINAL CAMBER" WHICH IS SHOWN IN MILLIMETERS.



ASSEMBLED BY : QT NGUYEN	DATE : 10-03
CHECKED BY : V.X. NGUYEN	DATE : 7-04
DRAWN BY : ELR 8/91	REV. 5/16/97 EEM/RGW
CHECKED BY : GRP 8/91	REV. 7/17/98 RWW/LES
	REV. 10/17/00 RWW/LES

REVISIONS						SHEET NO.
NO.	BY:	DATE:	NO.	BY:	DATE:	S-11
1			3			TOTAL SHEETS
2			4			64