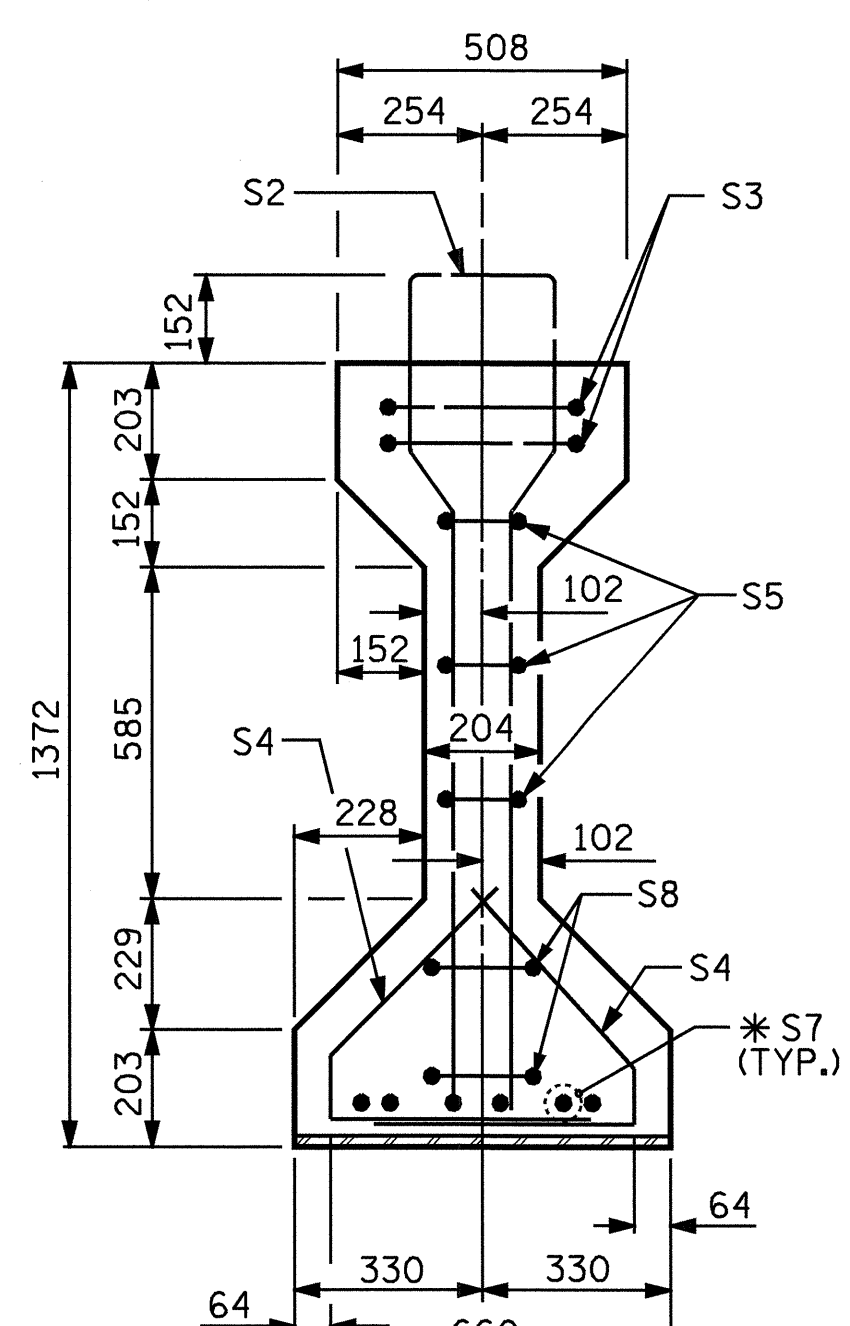
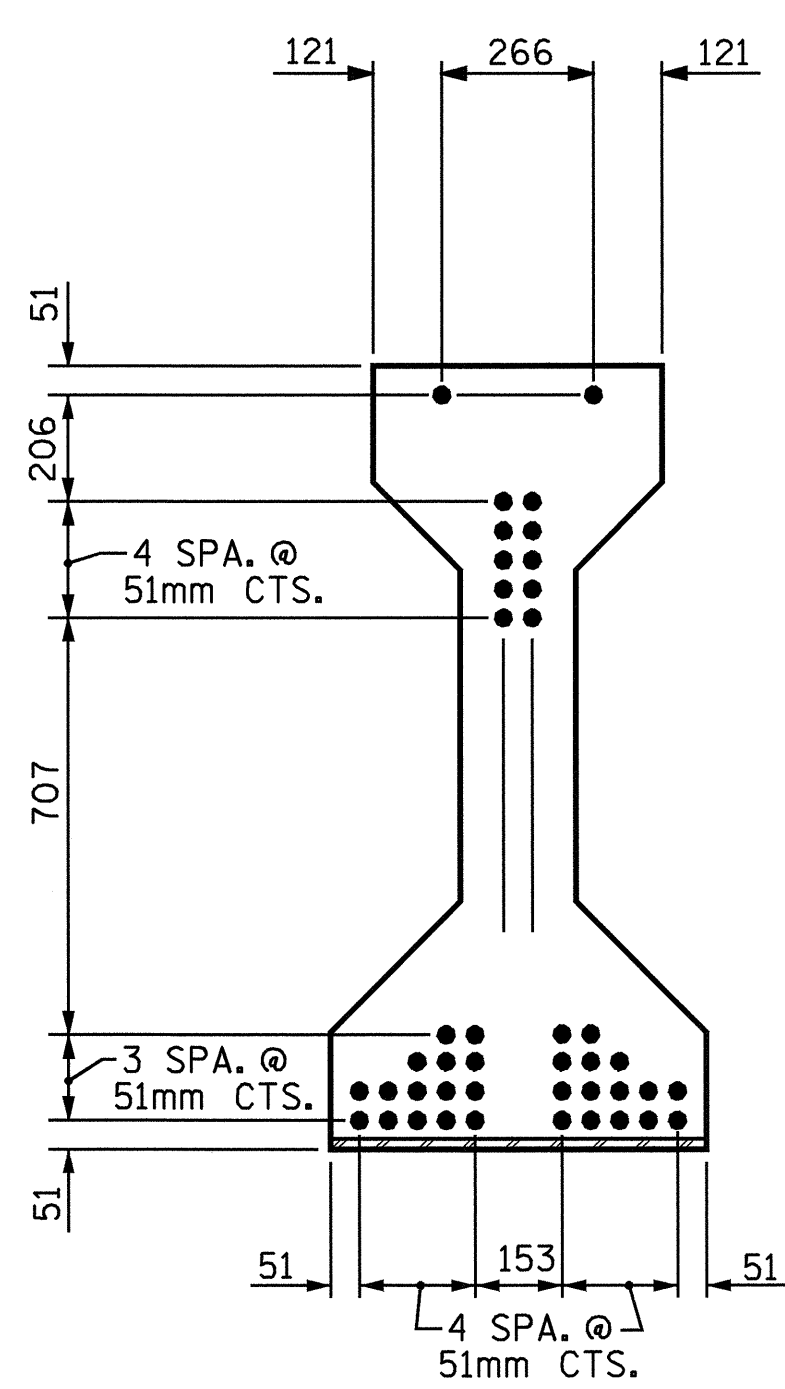


SECTION A-A

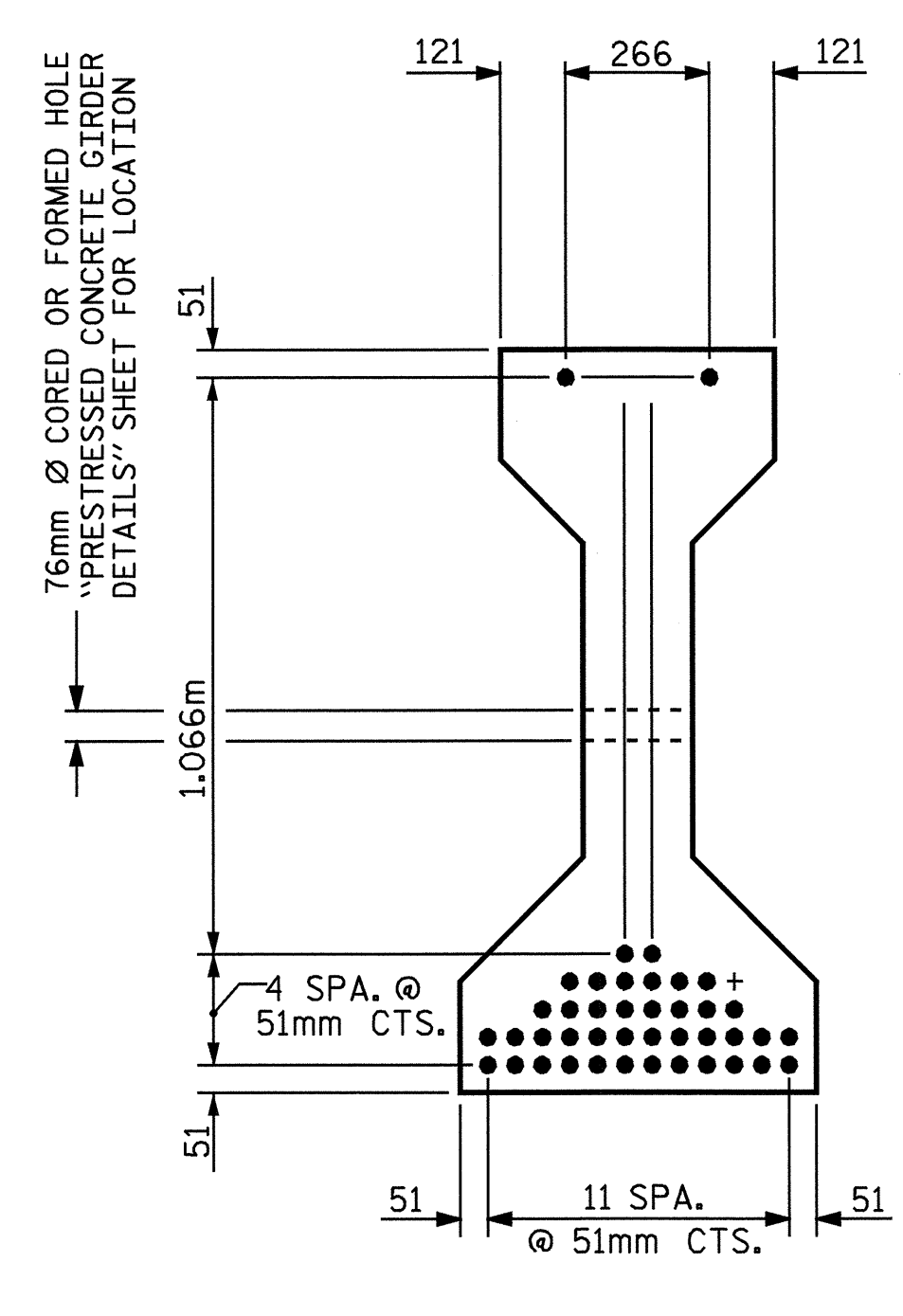


SECTION B-B

* FOR S7 BARS, SEE
DETAIL "A" OF
PRESTRESSED
CONCRETE GIRDER
CONTINUOUS FOR LIVE
LOAD DETAILS SHEET

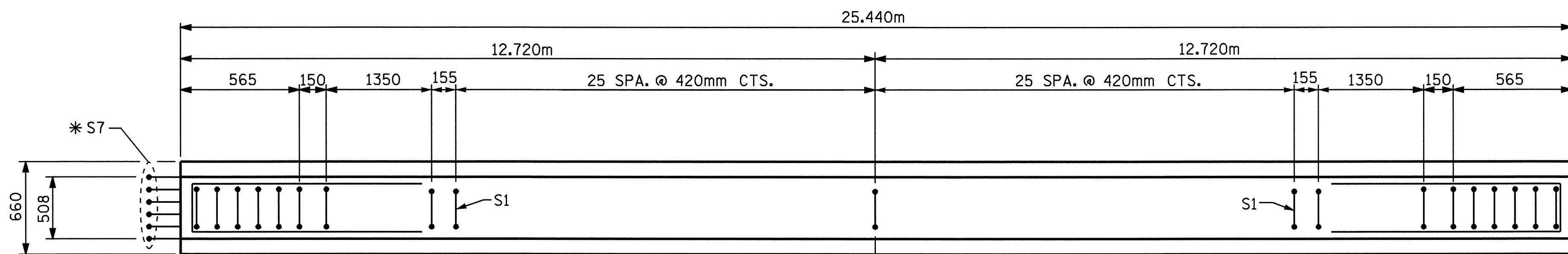


AT END OF GIRDER

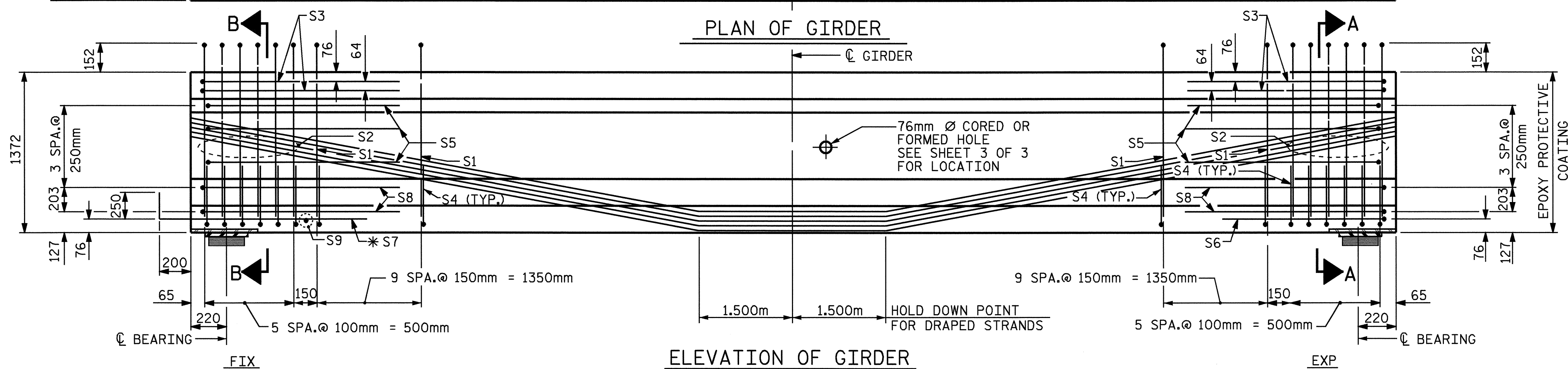


AT C OF GIRDER

12.70mm Ø LOW RELAXATION STRAND LAYOUT



PLAN OF GIRDER



ELEVATION OF GIRDER

12.70mm Ø L. R. GRADE 270 STRANDS

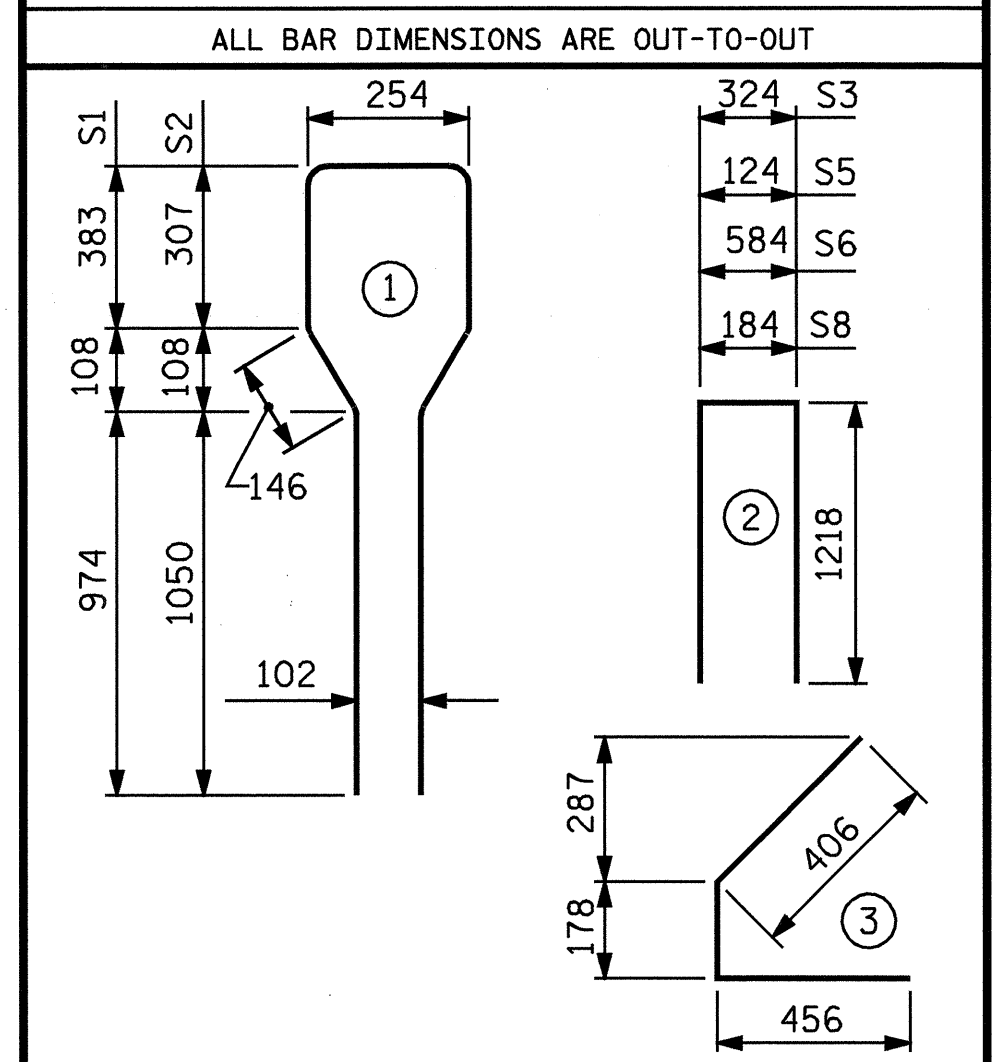
AREA (mm ²)	ULTIMATE STRENGTH (kN PER STRAND)	APPLIED PRESTRESS (kN PER STRAND)
98.71	183.7	137.8

REINFORCING STEEL FOR ONE GIRDER

BAR	NUMBER	SIZE	TYPE	LENGTH	WEIGHT
S1	71	#13	1	3260	230
S2	12	#19	1	3260	87
S3	4	#13	2	2760	11
S4	64	#13	3	1040	66
S5	6	#13	2	2560	15
S6	1	#13	2	3020	3
*S7	6	#16	STR	1120	10
S8	4	#13	2	2620	10
S9	1	#10	STR	560	1

* NOTE: S7 BARS SHALL BE BENT BEFORE SHIPMENT. HEAT BENDING SHALL NOT BE ALLOWED.

BAR TYPES



QUANTITIES FOR ONE GIRDER

REINFORCING STEEL	44.8 MPa CONCRETE	12.70mm Ø L.R. STRANDS
kg	m ³	No.
433	12.9	42

GIRDERS REQUIRED

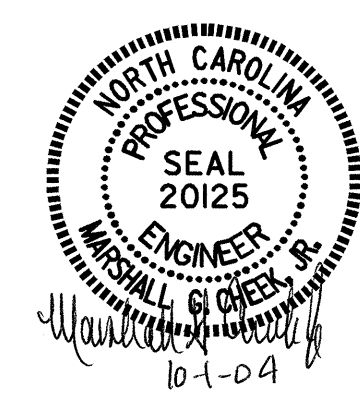
NUMBER	LENGTH	TOTAL LENGTH
4	25.440m	101.760m

PROJECT NO. R-2568B
DAVIDSON COUNTY
 STATION: 61+31.500 -L-

SHEET 2 OF 3

12.70mm Ø LOW RELAXATION	GIRDERS 1 THRU 4											
	TENTH POINTS	0 BRG.	.1	.2	.3	.4	.5	.6	.7	.8	.9	0 BRG.
CAMBER (GIRDER ALONE IN PLACE)	↑	0	.026	.048	.066	.077	.081	.077	.066	.048	.026	0
* DEFLECTION DUE TO SUPERIMPOSED D.L.	↓	0	.011	.021	.029	.034	.036	.034	.029	.021	.011	0
FINAL CAMBER	↑	0	15	27	37	43	45	43	37	27	15	0

* INCLUDES FUTURE WEARING SURFACE
 ALL VALUES ARE SHOWN IN METERS, EXCEPT "FINAL CAMBER" WHICH IS SHOWN IN MILLIMETERS.



ASSEMBLED BY : QT NGUYEN DATE : 10-03
 CHECKED BY : V.X. NGUYEN DATE : 7-04
 DRAWN BY : ELR 8/91 REV. 5/16/97 EEM/RGW
 CHECKED BY : GRP 8/91 REV. 7/17/98 RWW/LES
 REV. 10/17/00 RWW/LES