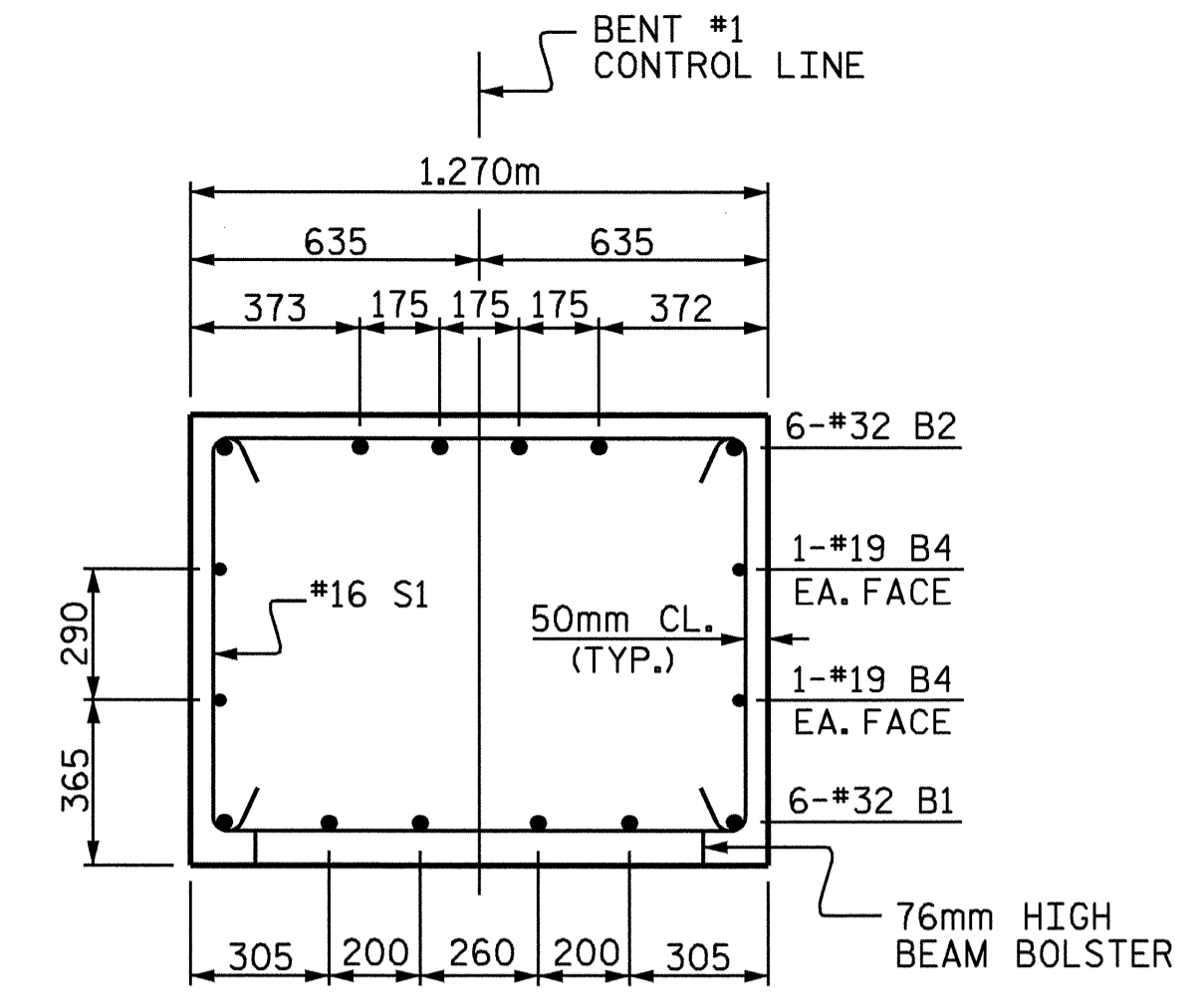
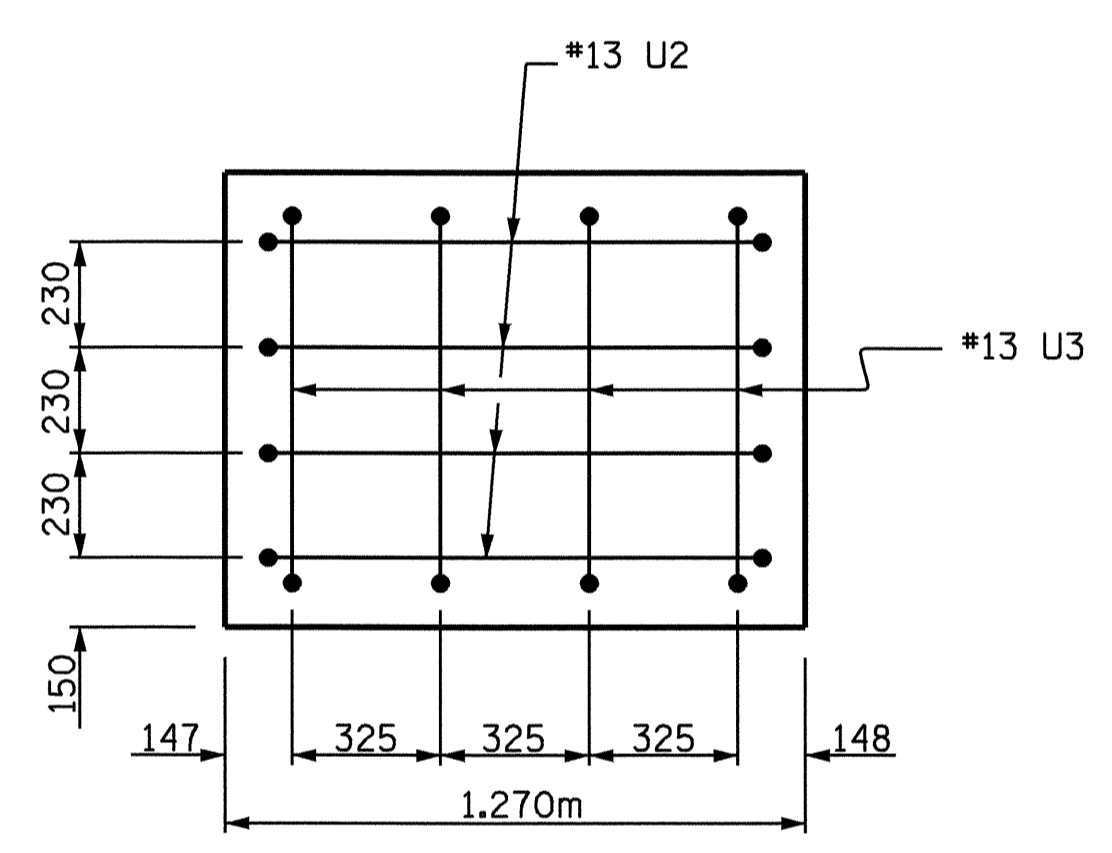


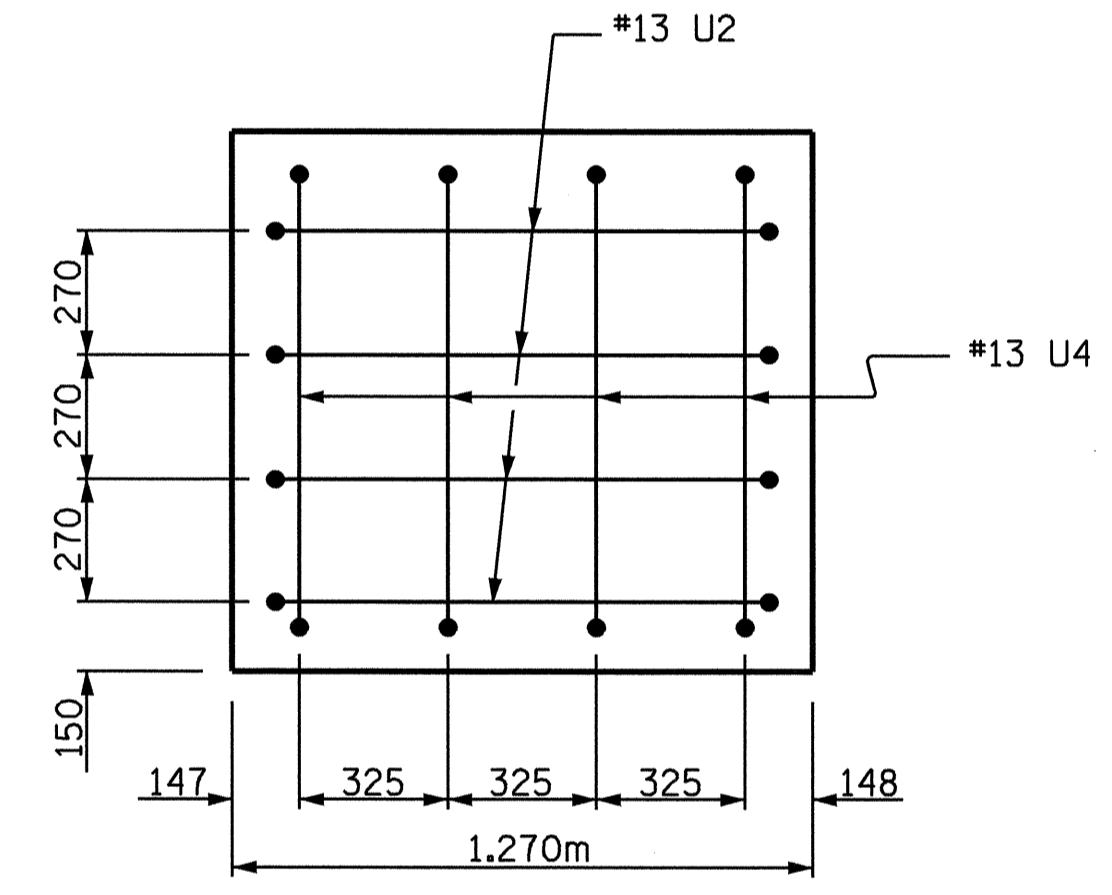
CONSTRUCTION JOINT DETAIL



SECTION A-A

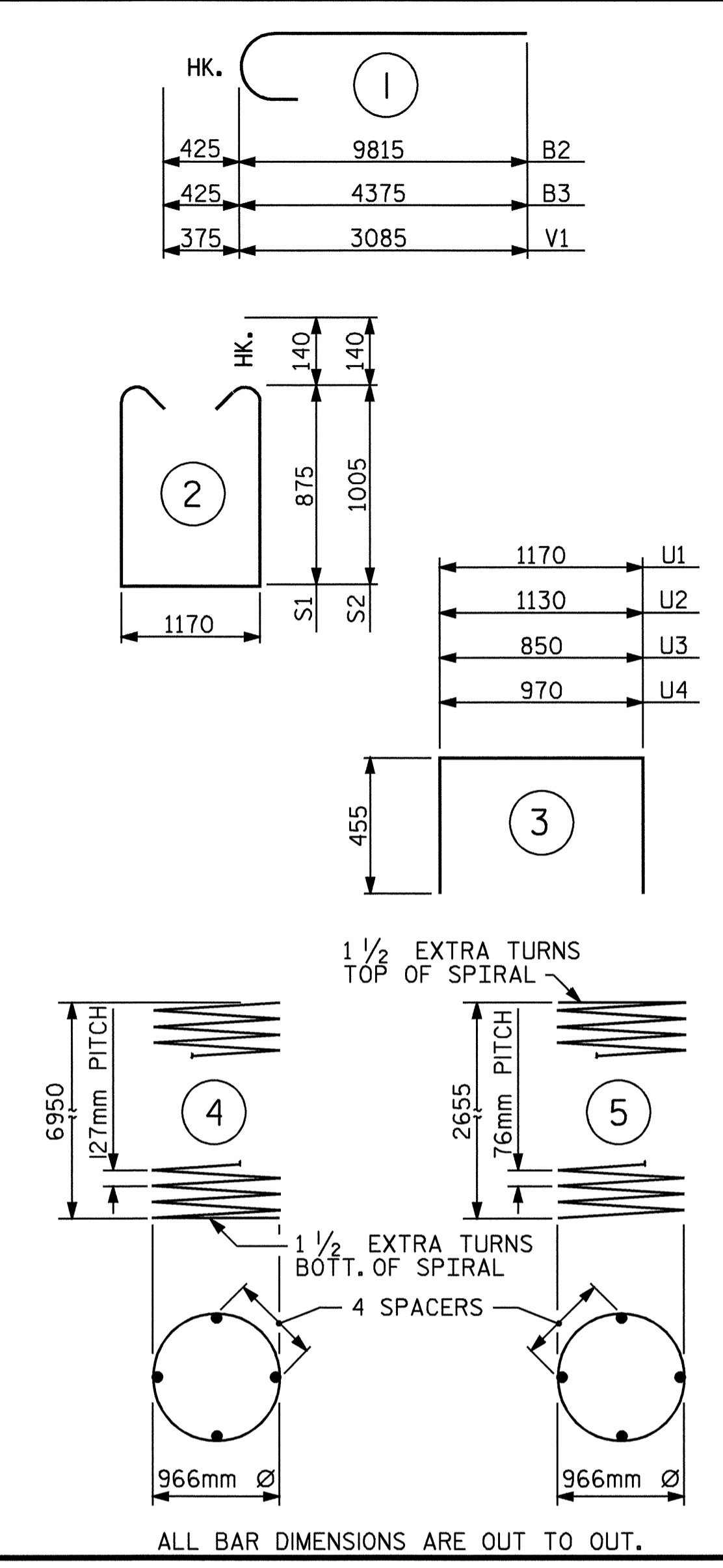


VIEW X-X



VIEW Y-Y

BAR TYPES



BILL OF MATERIAL

BENT NO. 1 (RIGHT LANE)						
BAR	NO	SIZE	TYPE	LENGTH	WEIGHT	
B1	6	32	STR	10840	417	
B2	6	32	1	10240	393	
B3	6	32	1	4800	184	
B4	4	19	STR	10840	97	
B5	2	19	STR	2220	10	
B6	3	13	STR	1160	3	
S1	23	16	2	3200	114	
S2	19	16	2	3460	102	
U1	32	13	3	2080	66	
U2	8	13	3	2040	16	
U3	4	13	3	1760	7	
U4	4	13	3	1880	7	
V1	42	29	1	3460	735	
M1	42	29	STR	9400	1998	
REINFORCING STEEL					Kg	4,149

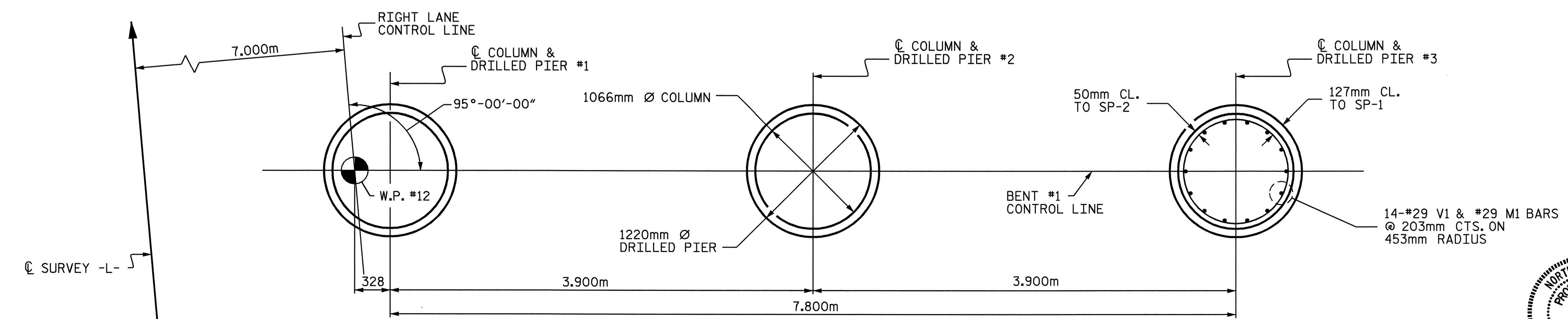
SP-1	3	**	4	170,280	793	
SP-2	3	*	5	110,820	330	
SPIRAL COLUMN REINFORCING STEEL					Kg	1,123

* THE SP-2 SPIRAL REINFORCING STEEL SHALL BE W20 OR D-20 COLD DRAWN WIRE OR #13 PLAIN OR DEFORMED BAR.
 ** THE SP-1 SPIRAL REINFORCING STEEL SHALL BE W31 OR D-31 COLD DRAWN WIRE OR #16 PLAIN OR DEFORMED BAR.

CLASS A CONCRETE BREAKDOWN		
POUR #2 (COLUMNS)		6.9 m ³
POUR #3 (CAP)		14.8 m ³
TOTAL		21.7 m ³

DRILLED PIER QUANTITIES

DRILLED PIERS :	
DRILLED PIER CONCRETE	24.9 m ³
POUR #1 (DRILLED PIERS)	
1220mm Ø DRILLED PIERS NOT IN SOIL	7.0 METERS
1220mm Ø DRILLED PIERS IN SOIL	14.3 METERS
PERMANENT STEEL CASING FOR 1220mm Ø DRILLED PIERS	3.3 METERS
CSL TUBES	94.2 METERS
CROSSHOLE SONIC LOGGING	2 EACH



PLAN OF DRILLED PIERS & COLUMNS

REINFORCING STEEL AND DIMENSIONS ARE TYPICAL FOR EACH COLUMN & DRILLED PIER

DRAWN BY : D. HODGE DATE : 8/04
 CHECKED BY : M.G. CHEEK DATE : 8/04



PROJECT NO. R-2568B
 DAVIDSON COUNTY
 STATION: 61+31.500 -L-

REVISIONS						SHEET NO.
NO.	BY:	DATE:	NO.	BY:	DATE:	S-53
1			3			TOTAL SHEETS 64
2			4			