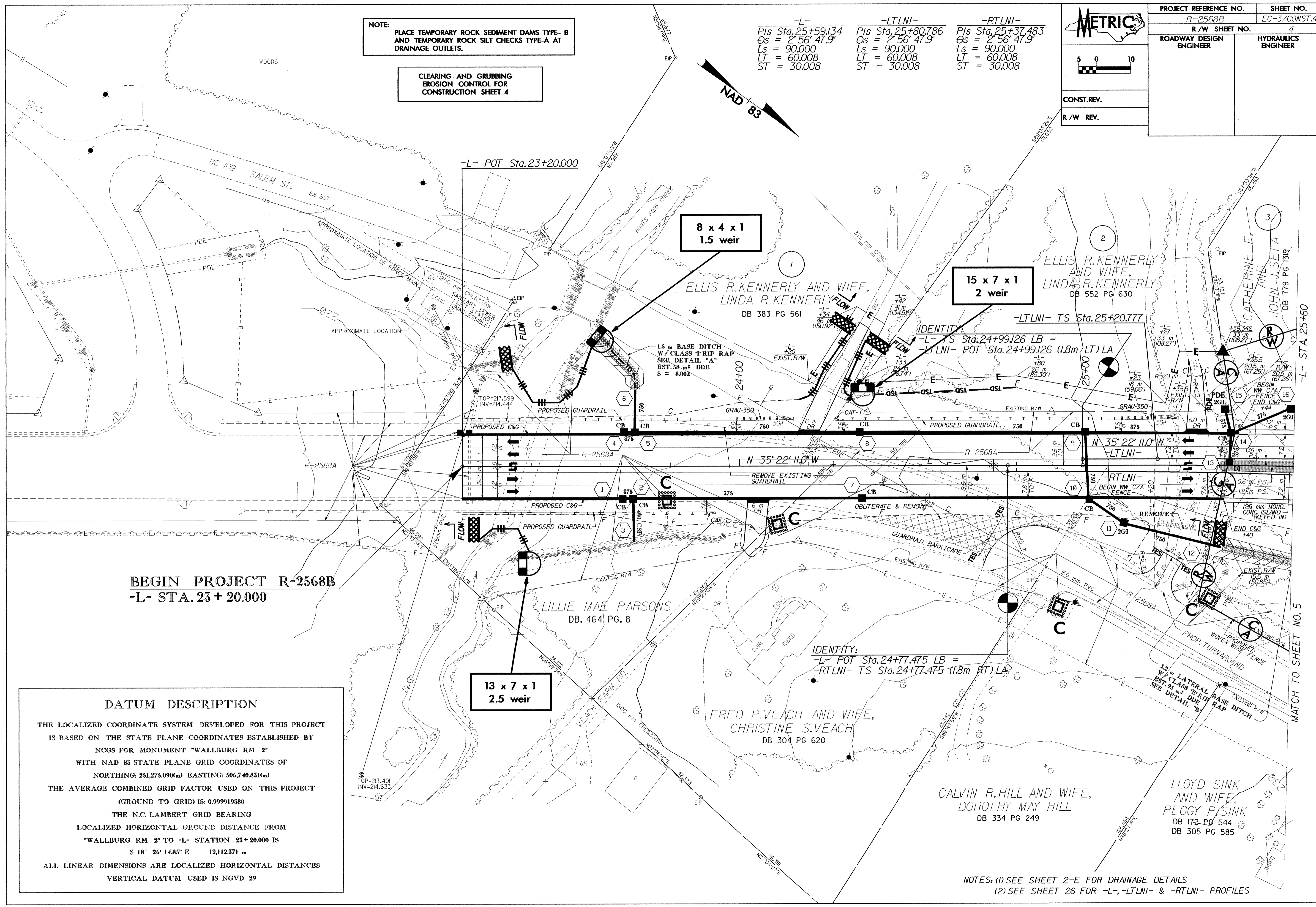
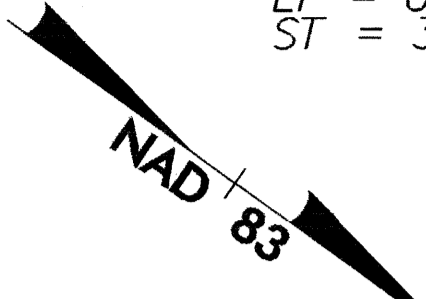
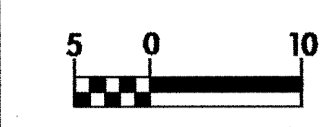
	PROJECT REFERENCE NO.	SHEET NO.
	R-2568B	EC-3/CONST.4
	R/W SHEET NO.	4
ROADWAY DESIGN ENGINEER	HYDRAULICS ENGINEER	
CONST. REV.		
R/W REV.		

NOTE: PLACE TEMPORARY ROCK SEDIMENT DAMS TYPE-B AND TEMPORARY ROCK SILT CHECKS TYPE-A AT DRAINAGE OUTLETS.

CLEARING AND GRUBBING EROSION CONTROL FOR CONSTRUCTION SHEET 4

-L-	-LTLNI-	-RTLNI-
Pls Sta. 25+59.134	Pls Sta. 25+80.786	Pls Sta. 25+37.483
Os = 2° 56' 47.9"	Os = 2° 56' 47.9"	Os = 2° 56' 47.9"
Ls = 90.000	Ls = 90.000	Ls = 90.000
LT = 60.008	LT = 60.008	LT = 60.008
ST = 30.008	ST = 30.008	ST = 30.008



DATUM DESCRIPTION

THE LOCALIZED COORDINATE SYSTEM DEVELOPED FOR THIS PROJECT IS BASED ON THE STATE PLANE COORDINATES ESTABLISHED BY NCGS FOR MONUMENT "WALLBURG RM 2" WITH NAD 83 STATE PLANE GRID COORDINATES OF NORTHING: 251,275.090(m) EASTING: 506,740.831(m)

THE AVERAGE COMBINED GRID FACTOR USED ON THIS PROJECT (GROUND TO GRID) IS: 0.999919380

THE N.C. LAMBERT GRID BEARING LOCALIZED HORIZONTAL GROUND DISTANCE FROM "WALLBURG RM 2" TO -L- STATION 23+20.000 IS S 18° 26' 14.85" E 12,112.571 m

ALL LINEAR DIMENSIONS ARE LOCALIZED HORIZONTAL DISTANCES VERTICAL DATUM USED IS NGVD 29

NOTES: (1) SEE SHEET 2-E FOR DRAINAGE DETAILS (2) SEE SHEET 26 FOR -L-, -LTLNI- & -RTLNI- PROFILES