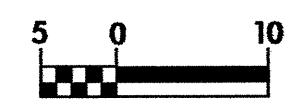
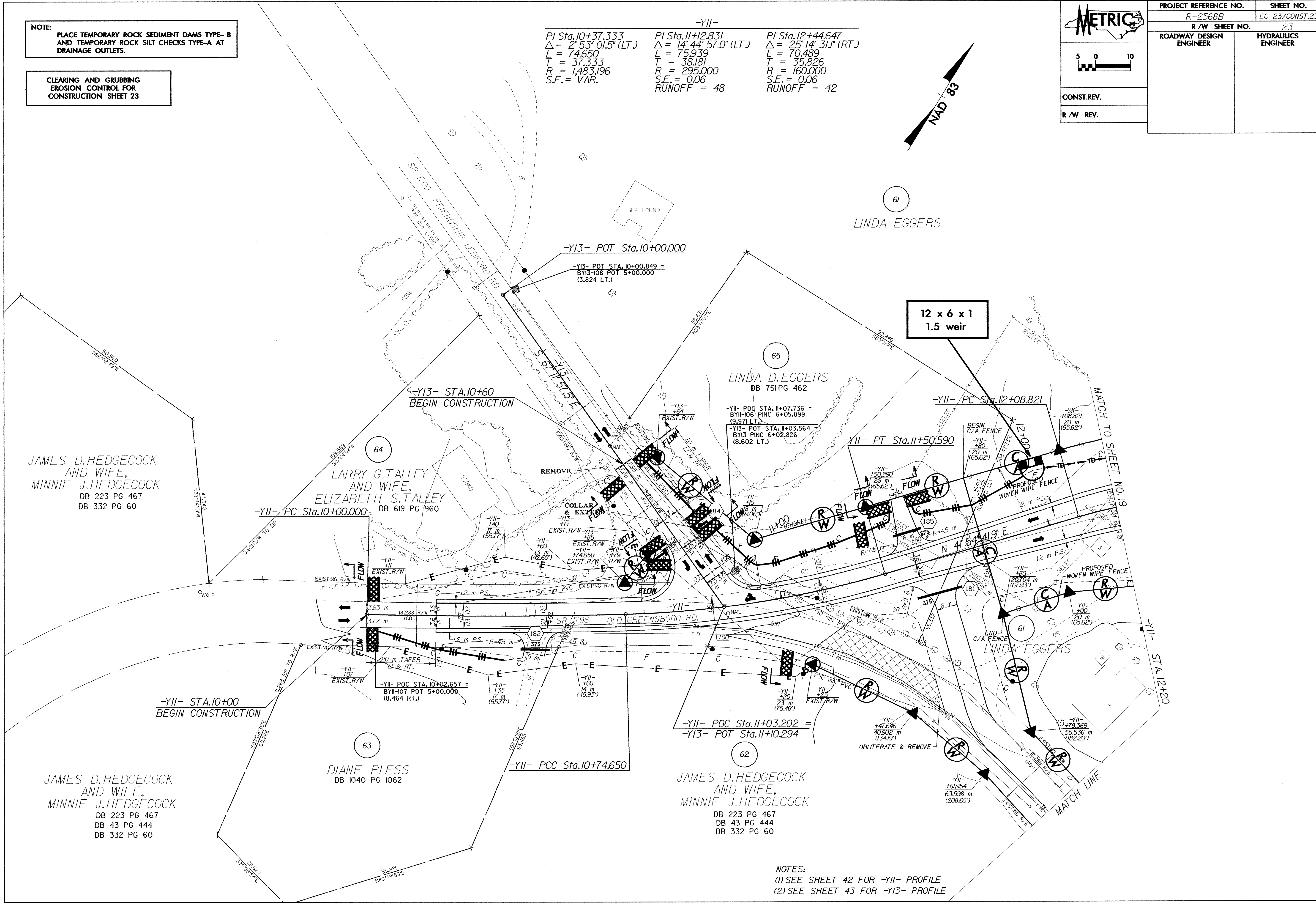
	PROJECT REFERENCE NO.	SHEET NO.
	R-2568B	EC-23/CONST.23
	R / W SHEET NO.	23
	ROADWAY DESIGN ENGINEER	HYDRAULICS ENGINEER
CONST. REV.		
R / W REV.		

NOTE:
PLACE TEMPORARY ROCK SEDIMENT DAMS TYPE-B AND TEMPORARY ROCK SILT CHECKS TYPE-A AT DRAINAGE OUTLETS.

CLEARING AND GRUBBING
EROSION CONTROL FOR
CONSTRUCTION SHEET 23

-Y11-	-Y12-	-Y13-
PI Sta. 10+37.333	PI Sta. 11+2.831	PI Sta. 12+44.647
$\Delta = 2^{\circ}53'01.5"$ (LT.)	$\Delta = 14^{\circ}44'57.0"$ (LT.)	$\Delta = 25^{\circ}14'31.1"$ (RT.)
L = 74.650	L = 75.939	L = 70.489
T = 37.333	T = 38.181	T = 35.826
R = 1,483.196	R = 295.000	R = 160.000
S.E. = VAR.	S.E. = 0.06	S.E. = 0.06
	RUNOFF = 48	RUNOFF = 42



JAMES D. HEDGECOCK
AND WIFE,
MINNIE J. HEDGECOCK
DB 223 PG 467
DB 332 PG 60

LARRY G. TALLEY
AND WIFE,
ELIZABETH S. TALLEY
DB 619 PG 960

JAMES D. HEDGECOCK
AND WIFE,
MINNIE J. HEDGECOCK
DB 223 PG 467
DB 43 PG 444
DB 332 PG 60

DIANE PLESS
DB 1040 PG 1062

JAMES D. HEDGECOCK
AND WIFE,
MINNIE J. HEDGECOCK
DB 223 PG 467
DB 43 PG 444
DB 332 PG 60

NOTES:
(1) SEE SHEET 42 FOR -Y11- PROFILE
(2) SEE SHEET 43 FOR -Y13- PROFILE