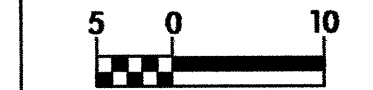




| | |
|-------------------------|---------------------|
| PROJECT REFERENCE NO. | SHEET NO. |
| R-2568B | EC-24/CONST.24 |
| R/W SHEET NO. | 24 |
| ROADWAY DESIGN ENGINEER | HYDRAULICS ENGINEER |
| CONST. REV. | |
| R/W REV. | |

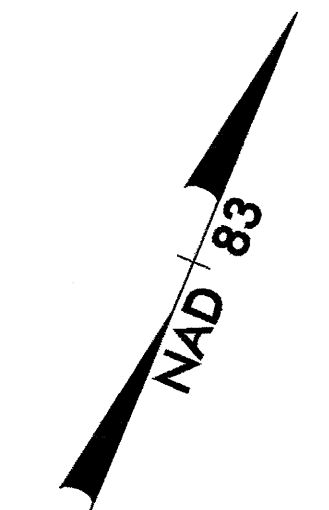
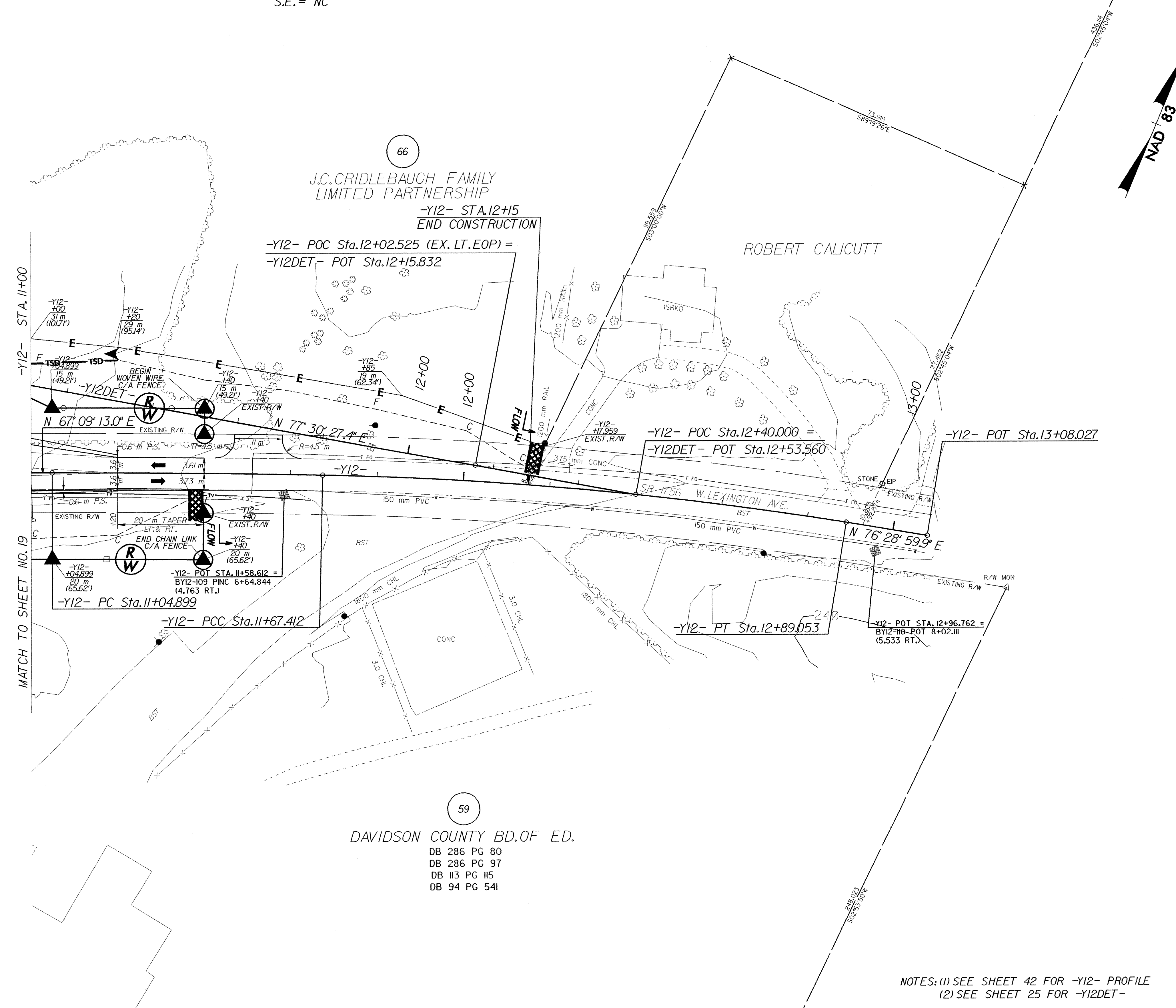


NOTE: PLACE TEMPORARY ROCK SEDIMENT DAMS TYPE-B AND TEMPORARY ROCK SILT CHECKS TYPE-A AT DRAINAGE OUTLETS.

CLEARING AND GRUBBING EROSION CONTROL FOR CONSTRUCTION SHEET 24

-Y12-
 PI Sta. 11+36.157 PI Sta. 12+28.334
 $\Delta = 1' 13' 48.7''$ (RT.) $\Delta = 8' 05' 58.2''$ (RT.)
 $L = 62.513$ $L = 121.641$
 $T = 31.258$ $T = 60.922$
 $R = 2911.508$ $R = 860.484$
 S.E. = NC

MATCH TO SHEET NO. 19



59
 DAVIDSON COUNTY BD. OF ED.
 DB 286 PG 80
 DB 286 PG 97
 DB 113 PG 115
 DB 94 PG 541

NOTES: (1) SEE SHEET 42 FOR -Y12- PROFILE
 (2) SEE SHEET 25 FOR -Y12DET-