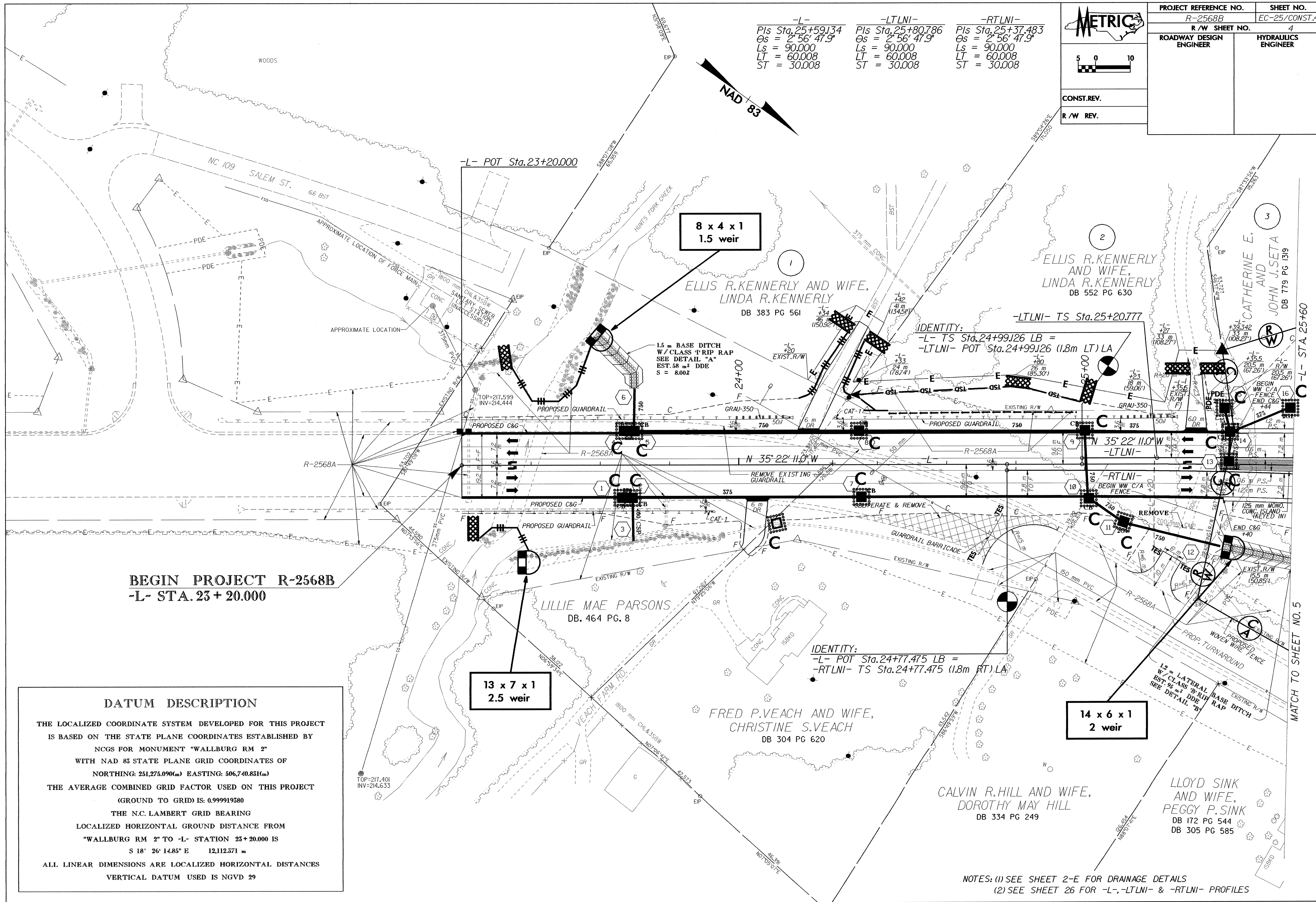
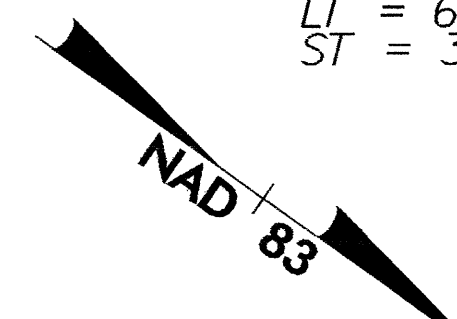
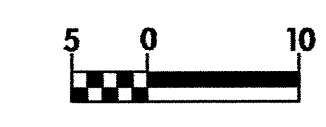
	PROJECT REFERENCE NO.	SHEET NO.
	R-2568B	EC-25/CONST.4
	R/W SHEET NO.	4
ROADWAY DESIGN ENGINEER	HYDRAULICS ENGINEER	
CONST. REV.		
R/W REV.		

-L-	-LTLNI-	-RTLNI-
Pis Sta. 25+59.134	Pis Sta. 25+80.786	Pis Sta. 25+37.483
Os = 2' 56" 47.9"	Os = 2' 56" 47.9"	Os = 2' 56" 47.9"
Ls = 90.000	Ls = 90.000	Ls = 90.000
LT = 60.008	LT = 60.008	LT = 60.008
ST = 30.008	ST = 30.008	ST = 30.008



BEGIN PROJECT R-2568B
-L- STA. 23 + 20.000

DATUM DESCRIPTION

THE LOCALIZED COORDINATE SYSTEM DEVELOPED FOR THIS PROJECT IS BASED ON THE STATE PLANE COORDINATES ESTABLISHED BY NCGS FOR MONUMENT "WALLBURG RM 2" WITH NAD 83 STATE PLANE GRID COORDINATES OF

NORTHING: 251,275.090(m) EASTING: 506,740.851(m)

THE AVERAGE COMBINED GRID FACTOR USED ON THIS PROJECT (GROUND TO GRID) IS: 0.999919580

THE N.C. LAMBERT GRID BEARING LOCALIZED HORIZONTAL GROUND DISTANCE FROM "WALLBURG RM 2" TO -L- STATION 23+20.000 IS

S 18° 26' 14.85" E 12,112.571 m

ALL LINEAR DIMENSIONS ARE LOCALIZED HORIZONTAL DISTANCES

VERTICAL DATUM USED IS NGVD 29

NOTES: (1) SEE SHEET 2-E FOR DRAINAGE DETAILS
 (2) SEE SHEET 26 FOR -L-, -LTLNI- & -RTLNI- PROFILES

MATCH TO SHEET NO. 5