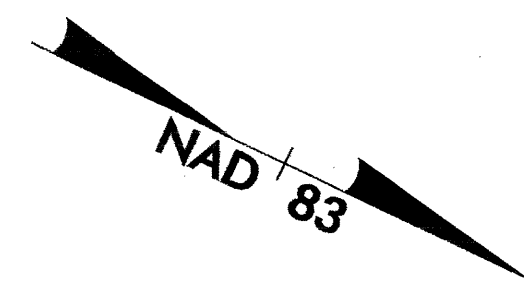
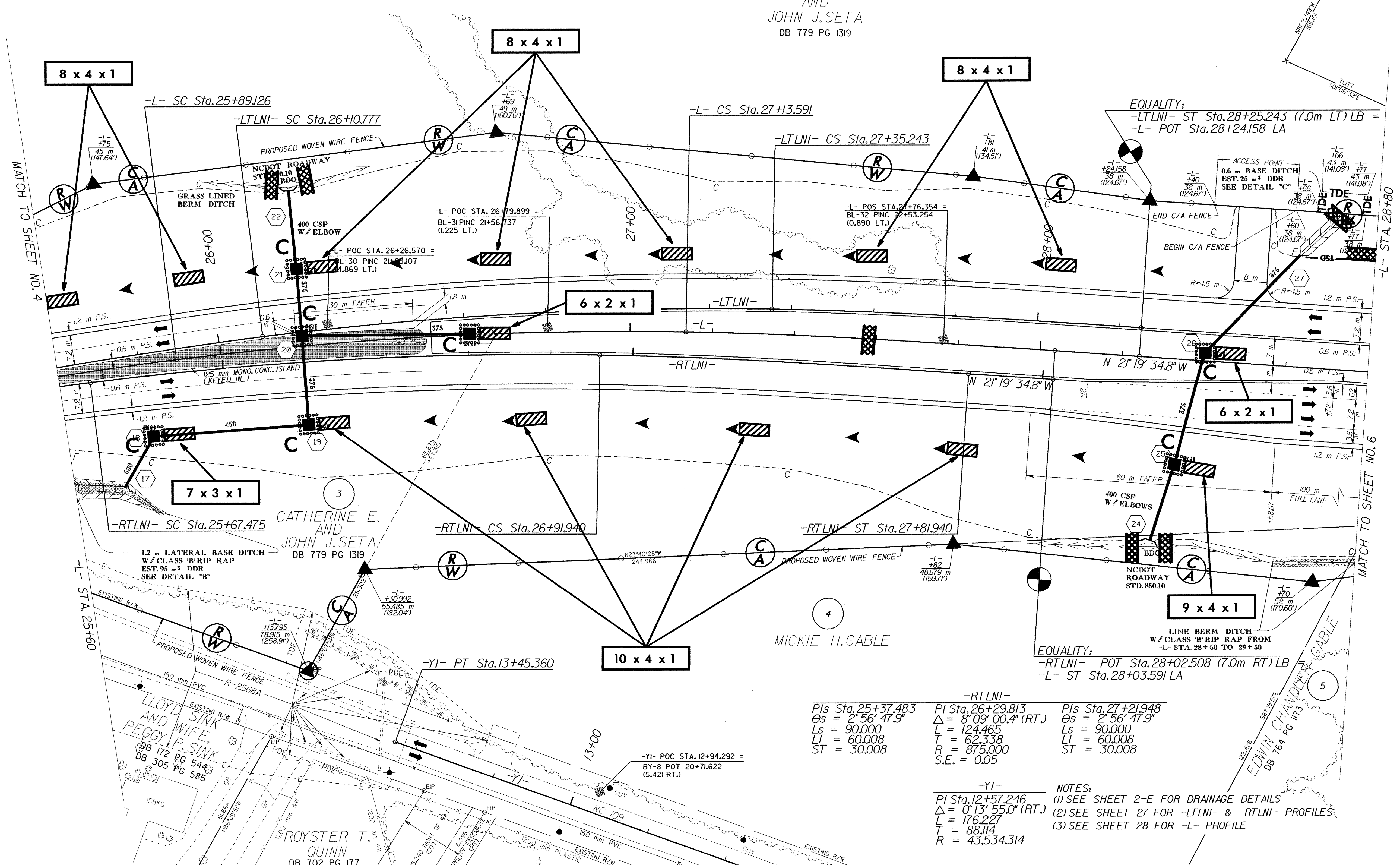
	PROJECT REFERENCE NO.	SHEET NO.
	R-2568B	EC-26/CONST.5
ROADWAY DESIGN ENGINEER		HYDRAULICS ENGINEER
R/W REV.		

-LTLNI-		
Pls Sta. 25+80.786	PI Sta. 26+73.115	Pls Sta. 27+65.250
Os = 2° 56' 47.9"	Δ = 8° 09' 00.4" (RT.)	Os = 2° 56' 47.9"
Ls = 90.000	L = 124.465	Ls = 90.000
LT = 60.008	T = 62.338	LT = 60.008
ST = 30.008	R = 875.000	ST = 30.008
S.E. = 0.05		

-L-		
Pls Sta. 25+59.134	PI Sta. 26+51.464	Pls Sta. 27+43.599
Os = 2° 56' 47.9"	Δ = 8° 09' 00.4" (RT.)	Os = 2° 56' 47.9"
Ls = 90.000	L = 124.465	Ls = 90.000
LT = 60.008	T = 62.338	LT = 60.008
ST = 30.008	R = 875.000	ST = 30.008



3
CATHERINE E.
AND
JOHN J. SETA
DB 779 PG 1319



-RTLNI-		
Pls Sta. 25+37.483	PI Sta. 26+29.813	Pls Sta. 27+21.948
Os = 2° 56' 47.9"	Δ = 8° 09' 00.4" (RT.)	Os = 2° 56' 47.9"
Ls = 90.000	L = 124.465	Ls = 90.000
LT = 60.008	T = 62.338	LT = 60.008
ST = 30.008	R = 875.000	ST = 30.008
S.E. = 0.05		

-YI-

PI Sta. 12+57.246	Δ = 0° 13' 55.0" (RT.)
L = 176.227	T = 88.114
R = 43,534.314	

NOTES:
(1) SEE SHEET 2-E FOR DRAINAGE DETAILS
(2) SEE SHEET 27 FOR -LTLNI- & -RTLNI- PROFILES
(3) SEE SHEET 28 FOR -L- PROFILE

MATCH TO SHEET NO. 4

MATCH TO SHEET NO. 6

MATCH TO SHEET NO. 4

MATCH TO SHEET NO. 6